



CAMBRIDGE ASSESSMENT

# **STEP Solutions 2011**

Mathematics  
STEP 9465/9470/9475

**October 2011**



The Cambridge Assessment Group is Europe's largest assessment agency and plays a leading role in researching, developing and delivering assessment across the globe. Our qualifications are delivered in over 150 countries through our three major exam boards.

Cambridge Assessment is the brand name of the University of Cambridge Local Examinations Syndicate, a department of the University of Cambridge. Cambridge Assessment is a not-for-profit organisation.

This mark scheme is published as an aid to teachers and students, to indicate the requirements of the examination. It shows the basis on which marks were awarded by the Examiners. It does not indicate the details of the discussions which took place at an Examiners' meeting before marking commenced.

All Examiners are instructed that alternative correct answers and unexpected approaches in candidates' scripts must be given marks that fairly reflect the relevant knowledge and skills demonstrated.

Mark schemes should be read in conjunction with the published question papers and the Report on the Examination.

Cambridge Assessment will not enter into any discussion or correspondence in connection with this mark scheme.

© UCLES 2010

More information about STEP can be found at:  
<http://www.atsts.org.uk>

## **Contents**

### **STEP Mathematics (9465, 9470, 9475)**

<b>Report</b>	<b>Page</b>
STEP Mathematics I	4
STEP Mathematics II	46
STEP Mathematics III	56

# STEP I 2011 Solutions

Dr Julian Gilbey, Principal Examiner (Marking)

## Question 1

(i) Show that the gradient of the curve  $\frac{a}{x} + \frac{b}{y} = 1$ , where  $b \neq 0$ , is  $-\frac{ay^2}{bx^2}$ .

We begin by differentiating the equation of the curve ( $ax^{-1} + by^{-1} = 1$ ) implicitly with respect to  $x$ , to get

$$-ax^{-2} - by^{-2} \frac{dy}{dx} = 0,$$

so that

$$-\frac{b}{y^2} \frac{dy}{dx} = \frac{a}{x^2},$$

giving our desired result

$$\frac{dy}{dx} = -\frac{ay^2}{bx^2}.$$

An alternative, but more complicated method, is to rearrange the equation first to get  $y$  in terms of  $x$  before differentiating. We have, on multiplying by  $xy$ ,

$$ay + bx = xy, \tag{1}$$

so that  $(x - a)y = bx$ , which gives

$$y = \frac{bx}{x - a}.$$

We can now differentiate this using the quotient rule to get

$$\frac{dy}{dx} = \frac{b(x - a) - bx \cdot 1}{(x - a)^2} = \frac{-ab}{(x - a)^2}.$$

The challenge is now to rewrite this in the form required. We can rearrange equation (1) to get  $(x - a)y = bx$ , so that  $(x - a) = bx/y$ . Substituting this into our expression for the derivative then gives

$$\frac{dy}{dx} = -\frac{ab}{(bx/y)^2} = -\frac{aby^2}{b^2x^2} = -\frac{ay^2}{bx^2}$$

as required.

STEP I 2011 Question 1 continued

The point  $(p, q)$  lies on both the straight line  $ax + by = 1$  and the curve  $\frac{a}{x} + \frac{b}{y} = 1$ , where  $ab \neq 0$ . Given that, at this point, the line and the curve have the same gradient, show that  $p = \pm q$ .

Rearranging the equation of the straight line  $ax + by = 1$  as  $y = -(\frac{a}{b})x + \frac{1}{b}$  shows that its gradient is  $-a/b$ .

Then using the above result for the gradient of the curve, we require that

$$-\frac{aq^2}{bp^2} = -\frac{a}{b},$$

so  $q^2/p^2 = 1$ , that is  $p^2 = q^2$  or  $p = \pm q$ .

Show further that either  $(a - b)^2 = 1$  or  $(a + b)^2 = 1$ .

Since  $(p, q)$  lies on both the straight line and the curve, it must satisfy both equations, so

$$ap + bq = 1 \quad \text{and} \quad \frac{a}{p} + \frac{b}{q} = 1.$$

Now if  $p = q$ , then the first equation gives  $(a + b)p = 1$  and the second gives  $(a + b)/p = 1$ , and multiplying these gives  $(a + b)^2 = 1$ .

Alternatively, if  $p = -q$ , then the first equation gives  $(a - b)p = 1$  and the second equation gives  $(a - b)/p = 1$ , and multiplying these now gives  $(a - b)^2 = 1$ .

(ii) Show that if the straight line  $ax + by = 1$ , where  $ab \neq 0$ , is a normal to the curve  $\frac{a}{x} - \frac{b}{y} = 1$ , then  $a^2 - b^2 = \frac{1}{2}$ .

We can find the derivative of this curve as above. A slick alternative is to notice that this is identical to the above curve, but with  $b$  replaced by  $-b$ , so that

$$\frac{dy}{dx} = \frac{ay^2}{bx^2}.$$

The gradient of the straight line is  $-a/b$  as before, so as this line is normal to the curve at the point  $(p, q)$ , say, we have

$$\frac{aq^2}{bp^2} \left(-\frac{a}{b}\right) = -1$$

as perpendicular gradients multiply to  $-1$ ; thus  $a^2q^2/b^2p^2 = 1$ , or  $a^2q^2 = b^2p^2$ .

We therefore deduce that  $aq = \pm bp$ , which we can divide by  $pq \neq 0$  to get  $\frac{a}{p} = \pm \frac{b}{q}$ .

Now since  $(p, q)$  lies on both the straight line and the curve, we have, as before,

$$ap + bq = 1 \quad \text{and} \quad \frac{a}{p} - \frac{b}{q} = 1.$$

**STEP I 2011 Question 1 continued**

Now if  $\frac{a}{p} = \frac{b}{q}$ , the second equation would become  $0 = 1$ , which is impossible. So we must have  $\frac{a}{p} = -\frac{b}{q}$ , giving

$$\frac{a}{p} + \frac{a}{p} = 1,$$

so that  $\frac{a}{p} = -\frac{b}{q} = \frac{1}{2}$ , giving  $p = 2a$  and  $q = -2b$ .

Substituting this into the equation of the straight line yields

$$a \cdot 2a + b \cdot (-2b) = 1,$$

so that  $a^2 - b^2 = \frac{1}{2}$  as required.

## Question 2

The number  $E$  is defined by  $E = \int_0^1 \frac{e^x}{1+x} dx$ .

Show that

$$\int_0^1 \frac{xe^x}{1+x} dx = e - 1 - E,$$

and evaluate  $\int_0^1 \frac{x^2e^x}{1+x} dx$  in terms of  $e$  and  $E$ .

*Approach 1: Using polynomial division*

Using polynomial division or similar, we find that we can write

$$\frac{x}{1+x} = 1 - \frac{1}{1+x}.$$

Therefore our first integral becomes

$$\begin{aligned} \int_0^1 \frac{xe^x}{1+x} dx &= \int_0^1 \left(1 - \frac{1}{1+x}\right) e^x dx \\ &= \int_0^1 e^x dx - \int_0^1 \frac{e^x}{1+x} dx \\ &= [e^x]_0^1 - E \\ &= e - 1 - E, \end{aligned}$$

as required.

We can play the same trick with the second integral, as

$$\frac{x^2}{1+x} = x - 1 + \frac{1}{1+x},$$

so that

$$\begin{aligned} \int_0^1 \frac{x^2e^x}{1+x} dx &= \int_0^1 \left(x - 1 + \frac{1}{1+x}\right) e^x dx \\ &= \int_0^1 xe^x dx - \int_0^1 e^x dx + \int_0^1 \frac{e^x}{1+x} dx. \end{aligned}$$

Now we can use integration by parts for the first integral to get

$$\begin{aligned} \int_0^1 xe^x dx &= [xe^x]_0^1 - \int_0^1 e^x dx \\ &= e - (e - 1) \\ &= 1. \end{aligned}$$

Therefore

$$\int_0^1 \frac{x^2e^x}{1+x} dx = 1 - (e - 1) + E = 2 - e + E.$$

STEP I 2011 Question 2 continued

*Approach 2: Substitution*

We can substitute  $u = 1 + x$  to simplify the denominator in the integral. This gives us

$$\begin{aligned}\int_0^1 \frac{xe^x}{1+x} dx &= \int_1^2 \frac{(u-1)e^{u-1}}{u} du \\ &= \int_1^2 e^{u-1} - \frac{e^{u-1}}{u} du.\end{aligned}$$

The first part of this integral can be easily dealt with. The second part needs the reverse substitution to be applied, replacing  $u$  by  $1 + x$ , giving

$$[e^{u-1}]_1^2 - \frac{e^x}{1+x} dx = e - 1 - E.$$

This is essentially identical to the first approach. The second integral follows in the same way.

*Approach 3: Integration by parts*

Integration by parts is trickier for this integral, as it is not obvious how to break up our integral. We use the parts formula as written in the formula booklet:  $\int u \frac{dv}{dx} dx = uv - \int v \frac{du}{dx} dx$ .

There are several ways which work (and many which do not). Here is a relatively straightforward approach. For the first integral, we take

$$u = \frac{x}{1+x} \quad \text{and} \quad \frac{dv}{dx} = e^x$$

so that

$$\frac{du}{dx} = \frac{1}{(1+x)^2} \quad \text{and} \quad v = e^x.$$

We then get

$$\begin{aligned}\int_0^1 \frac{xe^x}{1+x} dx &= \left[ \frac{xe^x}{1+x} \right]_0^1 - \int_0^1 \frac{e^x}{(1+x)^2} dx \\ &= \frac{1}{2}e - \int_0^1 \frac{e^x}{(1+x)^2} dx.\end{aligned}$$

The difficulty is now integrating the remaining integral. We again use parts, this time taking

$$u = e^x \quad \text{and} \quad \frac{dv}{dx} = \frac{1}{(1+x)^2}$$

so that

$$\frac{du}{dx} = e^x \quad \text{and} \quad v = -\frac{1}{1+x}.$$

This gives

$$\begin{aligned}\int_0^1 \frac{e^x}{(1+x)^2} dx &= \left[ -\frac{e^x}{1+x} \right]_0^1 - \int_0^1 -\frac{e^x}{1+x} dx \\ &= -\frac{1}{2}e + 1 + E.\end{aligned}$$

Combining this result with the first result then gives

$$\int_0^1 \frac{xe^x}{1+x} dx = \frac{1}{2}e - \left(-\frac{1}{2}e + 1 + E\right) = e - 1 - E.$$



STEP I 2011 Question 2 continued

For the second integral, we use a similar procedure, this time taking

$$u = \frac{x^2}{1+x} \quad \text{and} \quad \frac{dv}{dx} = e^x$$

so that

$$\frac{du}{dx} = \frac{2x+x^2}{(1+x)^2} \quad \text{and} \quad v = e^x.$$

We then get

$$\begin{aligned} \int_0^1 \frac{x^2 e^x}{1+x} dx &= \left[ \frac{x^2 e^x}{1+x} \right]_0^1 - \int_0^1 \frac{(2x+x^2)e^x}{(1+x)^2} dx \\ &= \frac{1}{2}e - \int_0^1 \frac{(2x+x^2)e^x}{(1+x)^2} dx. \end{aligned}$$

The integral in the last step can be handled in several ways; the easiest is to write

$$\frac{2x+x^2}{(1+x)^2} = \frac{x^2+2x+1-1}{(1+x)^2} = 1 - \frac{1}{(1+x)^2}$$

and then use the earlier calculation of  $\int e^x/(1+x)^2 dx$  to get

$$\begin{aligned} \int_0^1 \frac{x^2 e^x}{1+x} dx &= \frac{1}{2}e - \left( \int_0^1 e^x - \frac{e^x}{(1+x)^2} dx \right) \\ &= \frac{1}{2}e - [e^x]_0^1 + \left( -\frac{1}{2}e + 1 + E \right) \\ &= -e + 1 + 1 + E \\ &= 2 - e + E. \end{aligned}$$

STEP I 2011 Question 2 continued

Evaluate also, in terms of  $E$  and  $e$  as appropriate:

$$(i) \int_0^1 \frac{e^{\frac{1-x}{1+x}}}{1+x} dx;$$

This integral looks to be of a vaguely similar form, but with a more complicated exponential part. We therefore try the substitution  $u = \frac{1-x}{1+x}$  and see what we get.

If  $u = \frac{1-x}{1+x}$ , then

$$\frac{du}{dx} = \frac{-(1+x) - (1-x)}{(1+x)^2} = \frac{-2}{(1+x)^2},$$

so that  $\frac{dx}{du} = -\frac{1}{2}(1+x)^2$ . Also, when  $x = 0$ ,  $u = 1$ , and when  $x = 1$ ,  $u = 0$ .

We can also rearrange  $u = \frac{1-x}{1+x}$  to get

$$(1+x)u = 1-x$$

$$\text{so} \quad ux + x = 1 - u$$

$$\text{giving} \quad x = \frac{1-u}{1+u}.$$

Thus

$$\begin{aligned} \int_0^1 \frac{e^{\frac{1-x}{1+x}}}{1+x} dx &= \int_1^0 \frac{e^u}{1+x} \left(-\frac{1}{2}(1+x)^2\right) du \\ &= \int_0^1 \frac{1}{2} e^u (1+x) du && \text{reversing the limits} \\ &= \int_0^1 \frac{1}{2} e^u \left(1 + \frac{1-u}{1+u}\right) du \\ &= \int_0^1 \frac{1}{2} e^u \left(\frac{2}{1+u}\right) du \\ &= \int_0^1 \frac{e^u}{1+u} du \\ &= E. \end{aligned}$$

## STEP I 2011 Question 2 continued

Evaluate also in terms of  $E$  and  $e$  as appropriate:

$$(ii) \int_1^{\sqrt{2}} \frac{e^{x^2}}{x} dx$$

Again we have a different exponent, so we try substituting  $u = x^2$ , so that  $x = \sqrt{u}$ , while  $\frac{du}{dx} = 2x$  and so  $\frac{dx}{du} = \frac{1}{2x}$ . Also the limits  $x = 1$  and  $x = \sqrt{2}$  become  $u = 1$  and  $u = 2$ , giving us

$$\begin{aligned} \int_1^{\sqrt{2}} \frac{e^{x^2}}{x} dx &= \int_1^2 \frac{e^u}{x} \frac{1}{2x} du \\ &= \int_1^2 \frac{e^u}{2u} du. \end{aligned}$$

This is very similar to what we are looking for, except that it has the wrong limits and a denominator of  $2u$  rather than  $u + 1$  or perhaps  $2(u + 1)$ . So we make a further substitution:  $u = v + 1$ , so that  $v = u - 1$  and  $du/dv = 1$ , giving us

$$\begin{aligned} \int_1^{\sqrt{2}} \frac{e^{x^2}}{x} dx &= \int_1^2 \frac{e^u}{2u} du \\ &= \int_0^1 \frac{e^{v+1}}{2(v+1)} dv \\ &= \frac{e}{2} \int_0^1 \frac{e^v}{v+1} dv \\ &= \frac{eE}{2}, \end{aligned}$$

where on the penultimate line we have written  $e^{v+1} = e \cdot e^v$  and so taken out a factor of  $e/2$ .

It is also possible to evaluate this integral more directly by substituting  $u = x^2 - 1$ , so that  $x^2 = u + 1$ . The details are left to the reader.

### Question 3

Prove the identity

$$4 \sin \theta \sin\left(\frac{1}{3}\pi - \theta\right) \sin\left(\frac{1}{3}\pi + \theta\right) = \sin 3\theta. \quad (*)$$

We make use of two of the factor formulæ:

$$\begin{aligned} 2 \sin A \sin B &= \cos(A - B) - \cos(A + B) \\ 2 \sin A \cos B &= \sin(A + B) + \sin(A - B) \end{aligned}$$

(These can be derived by expanding the right hand sides using the addition formulæ, and then collecting like terms.)

Then initially taking  $A = \frac{1}{3}\pi - \theta$  and  $B = \frac{1}{3}\pi + \theta$  and using the first of the factor formulæ gives

$$\begin{aligned} 4 \sin \theta \sin\left(\frac{1}{3}\pi - \theta\right) \sin\left(\frac{1}{3}\pi + \theta\right) &= 2 \sin \theta (\cos(-2\theta) - \cos(\frac{2}{3}\pi)) \\ &= 2 \sin \theta (\cos 2\theta + \frac{1}{2}) \\ &= 2 \sin \theta \cos 2\theta + \sin \theta. \end{aligned}$$

We now use the second factor formula with  $A = \theta$  and  $B = 2\theta$  to simplify this last expression to

$$(\sin 3\theta + \sin(-\theta)) + \sin \theta = \sin 3\theta,$$

as required.

An alternative approach is to expand the second and third terms on the left hand side using the addition formulæ, giving:

$$\begin{aligned} 4 \sin \theta \sin\left(\frac{1}{3}\pi - \theta\right) \sin\left(\frac{1}{3}\pi + \theta\right) &= 4 \sin \theta (\sin \frac{1}{3}\pi \cos \theta - \cos \frac{1}{3}\pi \sin \theta) (\sin \frac{1}{3}\pi \cos \theta + \cos \frac{1}{3}\pi \sin \theta) \\ &= 4 \sin \theta \left(\frac{\sqrt{3}}{2} \cos \theta - \frac{1}{2} \sin \theta\right) \left(\frac{\sqrt{3}}{2} \cos \theta + \frac{1}{2} \sin \theta\right) \\ &= 4 \sin \theta \left(\frac{3}{4} \cos^2 \theta - \frac{1}{4} \sin^2 \theta\right) \\ &= 3 \sin \theta \cos^2 \theta - \sin^3 \theta, \end{aligned}$$

while

$$\begin{aligned} \sin 3\theta &= \sin(2\theta + \theta) \\ &= \sin 2\theta \cos \theta + \cos 2\theta \sin \theta \\ &= 2 \sin \theta \cos^2 \theta + (\cos^2 \theta - \sin^2 \theta) \sin \theta \\ &= 3 \sin \theta \cos^2 \theta - \sin^3 \theta. \end{aligned}$$

Thus the required identity holds.

STEP I 2011 Question 3 continued

(i) By differentiating (\*), or otherwise, show that

$$\cot \frac{1}{9}\pi - \cot \frac{2}{9}\pi + \cot \frac{4}{9}\pi = \sqrt{3}.$$

We can differentiate a product of several terms using the product rule repeatedly. In general, we have

$$\frac{d}{dx}(uvw\dots) = \frac{du}{dx}vwt\dots + u\frac{dv}{dx}wt\dots + uv\frac{dw}{dx}t\dots + \dots$$

In our case, we are differentiating a product of three terms, and we get

$$4 \cos \theta \sin\left(\frac{1}{3}\pi - \theta\right) \sin\left(\frac{1}{3}\pi + \theta\right) - 4 \sin \theta \cos\left(\frac{1}{3}\pi - \theta\right) \sin\left(\frac{1}{3}\pi + \theta\right) + 4 \sin \theta \sin\left(\frac{1}{3}\pi - \theta\right) \cos\left(\frac{1}{3}\pi + \theta\right) = 3 \cos 3\theta.$$

Now we are aiming to get an expressing involving cot, so we divide this result by (\*) to get

$$\cot \theta - \cot\left(\frac{1}{3}\pi - \theta\right) + \cot\left(\frac{1}{3}\pi + \theta\right) = 3 \cot 3\theta.$$

We now let  $\theta = \frac{1}{9}\pi$  to get

$$\cot \frac{1}{9}\pi - \cot \frac{2}{9}\pi + \cot \frac{4}{9}\pi = 3 \cot \frac{1}{3}\pi = 3/\sqrt{3} = \sqrt{3},$$

and we are done.

(ii) By setting  $\theta = \frac{1}{6}\pi - \phi$  in (\*), or otherwise, obtain a similar identity for  $\cos 3\theta$  and deduce that

$$\cot \theta \cot\left(\frac{1}{3}\pi - \theta\right) \cot\left(\frac{1}{3}\pi + \theta\right) = \cot 3\theta.$$

Setting  $\theta = \frac{1}{6}\pi - \phi$  in (\*) as instructed gives

$$4 \sin\left(\frac{1}{6}\pi - \phi\right) \sin\left(\frac{1}{6}\pi + \phi\right) \sin\left(\frac{1}{2}\pi - \phi\right) = \sin 3\left(\frac{1}{6}\pi - \phi\right).$$

To get cosines from this expression, we will need to use the identity  $\sin\left(\frac{1}{2}\pi - x\right) = \cos x$ . So we rewrite this as

$$4 \sin\left(\frac{1}{2}\pi - \left(\frac{1}{3}\pi + \phi\right)\right) \sin\left(\frac{1}{2}\pi - \left(\frac{1}{3}\pi - \phi\right)\right) \sin\left(\frac{1}{2}\pi - \phi\right) = \sin\left(\frac{1}{2}\pi - 3\phi\right)$$

which allows us to apply our identity to get

$$4 \cos\left(\frac{1}{3}\pi + \phi\right) \cos\left(\frac{1}{3}\pi - \phi\right) \cos \phi = \cos 3\phi,$$

which is a similar identity for  $\cos 3\phi$ . Replacing  $\phi$  by  $\theta$  and reordering the terms in the product gives

$$4 \cos \theta \cos\left(\frac{1}{3}\pi - \theta\right) \cos\left(\frac{1}{3}\pi + \theta\right) = \cos 3\theta.$$

Now dividing this identity by (\*) gives our desired identity for cot:

$$\cot \theta \cot\left(\frac{1}{3}\pi - \theta\right) \cot\left(\frac{1}{3}\pi + \theta\right) = \cot 3\theta. \quad (\dagger)$$

(Note that there is no factor of 4 in this expression.)

STEP I 2011 Question 3 continued

Show that

$$\operatorname{cosec} \frac{1}{9}\pi - \operatorname{cosec} \frac{5}{9}\pi + \operatorname{cosec} \frac{7}{9}\pi = 2\sqrt{3}.$$

As before, we differentiate the expression (†) which we have just derived to get

$$\begin{aligned} & -\operatorname{cosec}^2 \theta \cot(\frac{1}{3}\pi - \theta) \cot(\frac{1}{3}\pi + \theta) + \\ & \cot \theta \operatorname{cosec}^2(\frac{1}{3}\pi - \theta) \cot(\frac{1}{3}\pi + \theta) - \\ & \cot \theta \cot(\frac{1}{3}\pi - \theta) \operatorname{cosec}^2(\frac{1}{3}\pi + \theta) = -3 \operatorname{cosec}^2 3\theta. \end{aligned}$$

When we negate this identity and then divide it by (†), we will have lots of cancellation and we will be left with terms of the form  $\operatorname{cosec}^2 x / \cot x$ . Now

$$\frac{\operatorname{cosec}^2 x}{\cot x} = \frac{1}{\sin^2 x} \cdot \frac{\sin x}{\cos x} = \frac{1}{\sin x \cos x} = \frac{2}{\sin 2x} = 2 \operatorname{cosec} 2x,$$

so that the division gives us

$$2 \operatorname{cosec} 2\theta - 2 \operatorname{cosec} 2(\frac{1}{3}\pi - \theta) + 2 \operatorname{cosec} 2(\frac{1}{3}\pi + \theta) = 6 \operatorname{cosec} 6\theta.$$

To get the requested equality, we halve this identity and set  $2\theta = \frac{1}{9}\pi$  so that

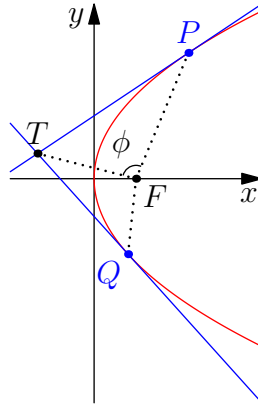
$$\operatorname{cosec} \frac{1}{9}\pi - \operatorname{cosec} \frac{5}{9}\pi + \operatorname{cosec} \frac{7}{9}\pi = 3 \operatorname{cosec} \frac{1}{3}\pi = 3 \cdot \frac{2}{\sqrt{3}} = 2\sqrt{3}$$

as required.

#### Question 4

The distinct points  $P$  and  $Q$ , with coordinates  $(ap^2, 2ap)$  and  $(aq^2, 2aq)$  respectively, lie on the curve  $y^2 = 4ax$ . The tangents to the curve at  $P$  and  $Q$  meet at the point  $T$ . Show that  $T$  has coordinates  $(apq, a(p+q))$ . You may assume that  $p \neq 0$  and  $q \neq 0$ .

We begin by sketching the graph (though this may be helpful, it is not required):



The equation of the curve is  $y^2 = 4ax$ , so we can find the gradient of the curve by implicit differentiation:

$$2y \frac{dy}{dx} = 4a,$$

and thus

$$\frac{dy}{dx} = \frac{2a}{y},$$

as long as  $y \neq 0$ . (Alternatively, we could write  $x = y^2/4a$  and then work out  $dx/dy = 2y/4a$ ; taking reciprocals then gives us the same result.)

Therefore the tangent at the point  $P$  with coordinates  $(ap^2, 2ap)$  has equation

$$y - 2ap = \frac{2a}{2ap}(x - ap^2),$$

which can easily be rearranged to give

$$x - py + ap^2 = 0.$$

Since  $y = 0$  would require  $p = 0$ , we can ignore this case, as we are assuming that  $p \neq 0$ . [In fact, if  $y = p = 0$ , we can look at the reciprocal of the gradient,  $\frac{dx}{dy} = \frac{y}{2a}$ , and this is zero, so the line is vertical. In this case, our equation gives  $x = 0$ , which is, indeed, a vertical line, so our equation works even when  $p = 0$ .]

Thus the tangent through  $P$  has equation  $x - py + ap^2 = 0$  and the tangent through  $Q$  has equation  $x - qy + aq^2 = 0$  likewise.

We solve these equations simultaneously to find the coordinates of  $T$ . Subtracting them gives

$$(p - q)y - a(p^2 - q^2) = 0.$$

STEP I 2011 Question 4 continued

Since  $p \neq q$ , we can divide by  $p - q$  to get

$$y - a(p + q) = 0,$$

so  $y = a(p + q)$  and therefore  $x = py - ap^2 = ap(p + q) - ap^2 = apq$ .

Thus  $T$  has coordinates  $(apq, a(p + q))$ , as wanted.

The point  $F$  has coordinates  $(a, 0)$  and  $\phi$  is the angle  $TFP$ . Show that

$$\cos \phi = \frac{pq + 1}{\sqrt{(p^2 + 1)(q^2 + 1)}}$$

and deduce that the line  $FT$  bisects the angle  $PFQ$ .

In the triangle  $TFP$ , we can use the cosine rule to find  $\cos \phi$ :

$$TP^2 = TF^2 + PF^2 - 2.TF.PF.\cos \phi,$$

so that

$$\cos \phi = \frac{TF^2 + PF^2 - TP^2}{2.TF.PF}.$$

Now using Pythagoras to find the distance between two points given their coordinates, we obtain

$$\begin{aligned} TF^2 &= (a(pq - 1))^2 + (a(p + q))^2 \\ &= a^2(p^2q^2 - 2pq + 1 + p^2 + 2pq + q^2) \\ &= a^2(p^2q^2 + p^2 + q^2 + 1) \\ &= a^2(p^2 + 1)(q^2 + 1) \\ FP^2 &= (a(p^2 - 1))^2 + (2ap)^2 \\ &= a^2(p^4 - 2p^2 + 1 + 4p^2) \\ &= a^2(p^4 + 2p^2 + 1) \\ &= a^2(p^2 + 1)^2 \\ TP^2 &= (a(pq - p^2))^2 + (a(p + q - 2p))^2 \\ &= (ap(q - p))^2 + (a(q - p))^2 \\ &= a^2(p^2 + 1)(q - p)^2 \end{aligned}$$

Thus

$$\begin{aligned} TF^2 + FP^2 - TP^2 &= a^2(p^2 + 1)(q^2 + 1 + p^2 + 1 - q^2 + 2pq - p^2) \\ &= 2a^2(1 + p^2)(1 + pq) \end{aligned}$$

so that

$$\begin{aligned} \cos \phi &= \frac{2a^2(1 + p^2)(1 + pq)}{2a^2\sqrt{(p^2 + 1)(q^2 + 1)(p^2 + 1)^2}} \\ &= \frac{1 + pq}{\sqrt{(p^2 + 1)(q^2 + 1)}} \end{aligned}$$

as we wanted.



STEP I 2011 Question 4 continued

An alternative approach is to use vectors and dot products to find  $\cos \phi$ . We have

$$\overrightarrow{FP} \cdot \overrightarrow{FT} = FP \cdot FT \cdot \cos \phi$$

(where the dot on the left hand side is the dot product, but on the right is ordinary multiplication), so we need only find the lengths  $FP$ ,  $FT$  as above and the dot product. The dot product is

$$\begin{aligned} \overrightarrow{FP} \cdot \overrightarrow{FT} &= \begin{pmatrix} ap^2 - a \\ 2ap - 0 \end{pmatrix} \cdot \begin{pmatrix} apq - a \\ a(p + q) - 0 \end{pmatrix} = (ap^2 - a)(apq - a) + 2ap \cdot a(p + q) \\ &= a^2(p^2 - 1)(pq - 1) + 2a^2(p^2 + pq) \\ &= a^2(p^3q - p^2 - pq + 1 + 2p^2 + 2pq) \\ &= a^2(p^3q + p^2 + pq + 1) \\ &= a^2(p^2(pq + 1) + pq + 1) \\ &= a^2(p^2 + 1)(pq + 1) \end{aligned}$$

Therefore we deduce

$$\begin{aligned} \cos \phi &= \frac{\overrightarrow{FP} \cdot \overrightarrow{FT}}{FP \cdot FT} \\ &= \frac{a^2(p^2 + 1)(pq + 1)}{a(p^2 + 1) \cdot a\sqrt{(p^2 + 1)(q^2 + 1)}} \\ &= \frac{pq + 1}{\sqrt{(p^2 + 1)(q^2 + 1)}} \end{aligned}$$

as required.

Now to show that the line  $FT$  bisects the angle  $PFQ$ , it suffices to show that  $\phi$  is equal to the angle  $TFQ$  (see the sketch above).

Now we can find  $\cos(\angle TFQ)$  by using the above formula and swapping every  $p$  and  $q$  in it, as this will swap the roles of  $P$  and  $Q$ .

But swapping every  $p$  and  $q$  does not change the formula, so  $\cos(\angle TFQ) = \cos(\angle TFP)$ , and so  $\angle TFQ = \angle TFP$  as both angles are strictly less than  $180^\circ$  and cosine is one-to-one in this domain.

Thus the line  $FT$  bisects the angle  $PFQ$ , as required.

### Question 5

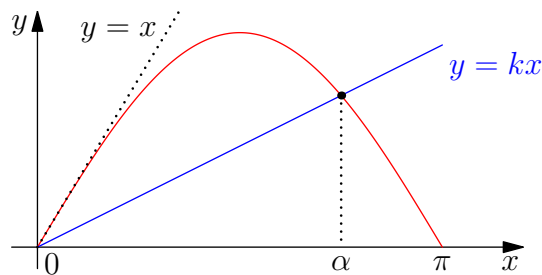
Given that  $0 < k < 1$ , show with the help of a sketch that the equation

$$\sin x = kx \quad (*)$$

has a unique solution in the range  $0 < x < \pi$ .

We sketch the graph of  $y = \sin x$  in the range  $0 \leq x \leq \pi$  along with the line  $y = kx$ .

Now since  $\frac{d}{dx}(\sin x) = \cos x$ , the gradient of  $y = \sin x$  at  $x = 0$  is 1, so the tangent at  $x = 0$  is  $y = x$ . We therefore also sketch the line  $y = x$ .



It is clear that there is at most one intersection of  $y = kx$  with  $y = \sin x$  in the interval  $0 < x < \pi$ , and since  $0 < k < 1$ , there is exactly one, as the gradient is positive and less than that of  $y = \sin x$  at the origin. (If  $k \leq 0$ , there would be no intersections in this range as  $kx$  would be negative or zero; if  $k \geq 1$ , the only intersection would be at  $x = 0$ .)

Let

$$I = \int_0^\pi |\sin x - kx| dx.$$

Show that

$$I = \frac{\pi^2 \sin \alpha}{2\alpha} - 2 \cos \alpha - \alpha \sin \alpha,$$

where  $\alpha$  is the unique solution of (\*).

It is a pain to work with absolute values (the “modulus function”), so we split the integral into two integrals: in the interval  $0 \leq x \leq \alpha$ ,  $\sin x - kx \geq 0$ , and in the interval  $\alpha \leq x \leq \pi$ ,  $\sin x - kx \leq 0$ . So

$$\begin{aligned} I &= \int_0^\pi |\sin x - kx| dx \\ &= \int_0^\alpha |\sin x - kx| dx + \int_\alpha^\pi |\sin x - kx| dx \\ &= \int_0^\alpha \sin x - kx dx + \int_\alpha^\pi -\sin x + kx dx \\ &= \left[-\cos x - \frac{1}{2}kx^2\right]_0^\alpha + \left[\cos x + \frac{1}{2}kx^2\right]_\alpha^\pi \\ &= \left(-\cos \alpha - \frac{1}{2}k\alpha^2\right) - (-\cos 0 - 0) + \left(\cos \pi + \frac{1}{2}k\pi^2\right) - \left(\cos \alpha + \frac{1}{2}k\alpha^2\right) \\ &= -2 \cos \alpha - k\alpha^2 + \frac{1}{2}k\pi^2 \end{aligned}$$

STEP I 2011 Question 5 continued

$$= -2 \cos \alpha - \alpha \sin \alpha + \frac{\pi^2 \sin \alpha}{2\alpha}$$

where the last line follows using  $k\alpha = \sin \alpha$  so that  $k = (\sin \alpha)/\alpha$ , and we have reached the desired result.

Show that  $I$ , regarded as a function of  $\alpha$ , has a unique stationary value and that this stationary value is a minimum. Deduce that the smallest value of  $I$  is

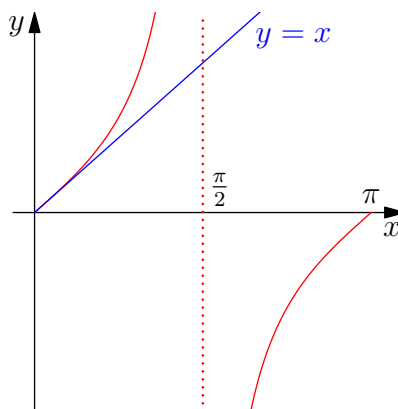
$$-2 \cos \frac{\pi}{\sqrt{2}}.$$

We differentiate  $I$  to find its stationary points. We have

$$\begin{aligned} \frac{dI}{d\alpha} &= \frac{\pi^2}{2} \left( \frac{\alpha \cos \alpha - \sin \alpha}{\alpha^2} \right) + 2 \sin \alpha - \sin \alpha - \alpha \cos \alpha \\ &= (\sin \alpha - \alpha \cos \alpha) - \frac{\pi^2}{2\alpha^2} (\sin \alpha - \alpha \cos \alpha) \\ &= \left( 1 - \frac{\pi^2}{2\alpha^2} \right) (\sin \alpha - \alpha \cos \alpha) \end{aligned}$$

so  $\frac{dI}{d\alpha} = 0$  if and only if  $2\alpha^2 = \pi^2$  or  $\sin \alpha = \alpha \cos \alpha$ . The former condition gives  $\alpha = \pm\pi/\sqrt{2}$ , while the latter condition gives  $\tan \alpha = \alpha$ .

A quick sketch of the  $\tan$  graph (see below) shows that  $\tan \alpha = \alpha$  has no solutions in the range  $0 < \alpha < \pi$  (though  $\alpha = 0$  is a solution); the sketch uses the result that  $\frac{d}{dx}(\tan x) = \sec^2 x$ , so the tangent to  $y = \tan x$  at  $x = 0$  is  $y = x$ .



Thus the only solution in the required range is  $\alpha = \pi/\sqrt{2}$  (and note that  $\pi/\sqrt{2} < \pi$ ).

To ascertain whether it is a maximum, a minimum or a point of inflection, we could either look at the values of  $I$  or  $dI/d\alpha$  at this point and either side or we could consider the second derivative.

Either way, we will eventually have to work out the value of  $I$  when  $\alpha = \pi/\sqrt{2}$ , so we will do so now:

STEP I 2011 Question 5 continued

$$\begin{aligned}
 I &= \frac{\pi^2 \sin(\pi/\sqrt{2})}{2\pi/\sqrt{2}} - 2 \cos \frac{\pi}{\sqrt{2}} - \frac{\pi}{\sqrt{2}} \sin \frac{\pi}{\sqrt{2}} \\
 &= \frac{\pi}{\sqrt{2}} \sin \frac{\pi}{\sqrt{2}} - 2 \cos \frac{\pi}{\sqrt{2}} - \frac{\pi}{\sqrt{2}} \sin \frac{\pi}{\sqrt{2}} \\
 &= -2 \cos \frac{\pi}{\sqrt{2}}.
 \end{aligned}$$

*Approach 1: Using values either side*

The function  $I$  is not well-defined when  $\alpha = 0$ , but if we know that  $\frac{\sin \alpha}{\alpha} \rightarrow 1$  as  $\alpha \rightarrow 0$ , we can deduce that as  $\alpha \rightarrow 0$ ,  $I \rightarrow -2 + \frac{\pi^2}{2} > \frac{5}{2} > 2$  (using  $\pi > 3$ ).

When  $\alpha = \pi$ , we have  $I = 2$ .

Since at  $\alpha = \pi/\sqrt{2}$ , we have  $I = -2 \cos(\pi/\sqrt{2}) < 2$ , this must be the minimum value of  $I$ .

Alternatively, if we wish to consider the value of  $dI/d\alpha$ , we need to know the sign of  $\sin \alpha - \alpha \cos \alpha$  near  $\alpha = \pi/\sqrt{2}$ . Now since  $\frac{\pi}{2} < \alpha < \pi$ ,  $\cos \alpha < 0$  and so this expression is positive. Therefore for  $\alpha$  slightly less than  $\pi/\sqrt{2}$ ,  $dI/d\alpha < 0$  and for  $\alpha > \pi/\sqrt{2}$ ,  $dI/d\alpha > 0$ , so that  $\alpha = \pi/\sqrt{2}$  is a (local) minimum.

*Approach 2: Using the second derivative*

We have

$$\begin{aligned}
 \frac{d^2 I}{d\alpha^2} &= \frac{\pi^2}{\alpha^3} (\sin \alpha - \alpha \cos \alpha) + \left(1 - \frac{\pi^2}{2\alpha^2}\right) (\cos \alpha - \cos \alpha + \alpha \sin \alpha) \\
 &= \frac{\pi^2}{\alpha^3} (\sin \alpha - \alpha \cos \alpha) + \left(1 - \frac{\pi^2}{2\alpha^2}\right) \alpha \sin \alpha
 \end{aligned}$$

Now when  $\alpha = \pi/\sqrt{2}$ , so that  $\pi^2/2\alpha^2 = 1$ , we have

$$\frac{d^2 I}{d\alpha^2} = \frac{\pi^2}{\alpha^3} (\sin \alpha - \alpha \cos \alpha).$$

Since  $\alpha = \frac{\pi}{2}\sqrt{2} > \frac{\pi}{2}$ , we have  $\sin \alpha > 0$  and  $\cos \alpha < 0$ , so  $\frac{d^2 I}{d\alpha^2} > 0$  and  $I$  has a local minimum at this value of  $\alpha$ .

## Question 6

Use the binomial expansion to show that the coefficient of  $x^r$  in the expansion of  $(1-x)^{-3}$  is  $\frac{1}{2}(r+1)(r+2)$ .

Using the formula in the formula book for the binomial expansion, we find that the  $x^r$  term is

$$\begin{aligned} \binom{-3}{r}(-x)^r &= \frac{(-3)(-4)(-5)\dots(-3-r+1)}{r!}(-1)^r x^r \\ &= \frac{3.4.5.\dots.(r+2)}{r!} x^r \\ &= \frac{3.4.5.\dots.(r+2)}{1.2.3.4.5.\dots.r} x^r \\ &= \frac{(r+1)(r+2)}{1.2} x^r \end{aligned}$$

so the coefficient of  $x^r$  is  $\frac{1}{2}(r+1)(r+2)$ . But the argument as we've written it assumes that  $r \geq 2$  (as we've left ourselves with "1.2" in the denominator), so we need to check that this also holds for  $r = 0$  and  $r = 1$ . But this is easy, as  $\binom{-3}{0}(-1)^0 = 1 = \frac{1}{2} \times 1 \times 2$  and  $\binom{-3}{1}(-1)^1 = 3 = \frac{1}{2} \times 2 \times 3$ .

Alternatively, we could have argued

$$\frac{3.4.5.\dots.(r+2)}{r!} x^r = \frac{1.2.3.4.5.\dots.(r+2)}{1.2.r!} x^r = \frac{(r+1)(r+2)}{1.2} x^r$$

and this would have dealt with the cases  $r = 0$  and  $r = 1$  automatically, as we are not implicitly assuming that  $r \geq 2$ .

(i) Show that the coefficient of  $x^r$  in the expansion of

$$\frac{1-x+2x^2}{(1-x)^3}$$

is  $r^2 + 1$  and hence find the sum of the series

$$1 + \frac{2}{2} + \frac{5}{4} + \frac{10}{8} + \frac{17}{16} + \frac{26}{32} + \frac{37}{64} + \frac{50}{128} + \dots$$

We have

$$\frac{1-x+2x^2}{(1-x)^3} = (1-x+2x^2)(a_0 + a_1x + a_2x^2 + \dots + a_r x^r + \dots)$$

where  $a_r = \frac{1}{2}(r+1)(r+2)$ . Thus

$$\begin{aligned} \frac{1-x+2x^2}{(1-x)^3} &= a_0 + a_1x + a_2x^2 + \dots + a_r x^r + \dots \\ &\quad - a_0x - a_1x^2 - \dots - a_{r-1}x^r - \dots \\ &\quad + 2a_0x^2 + \dots + 2a_{r-2}x^r + \dots \\ &= a_0 + (a_1 - a_0)x + (a_2 - a_1 + 2a_0)x^2 + \dots \\ &\quad + (a_r - a_{r-1} + 2a_{r-2})x^r + \dots \end{aligned}$$

STEP I 2011 Question 6 continued

Thus the coefficient of  $x^r$  for  $r \geq 2$  is

$$\begin{aligned} a_r - a_{r-1} + 2a_{r-2} &= \frac{1}{2}(r+1)(r+2) - \frac{1}{2}r(r+1) + (r-1)r \\ &= \frac{1}{2}(r^2 + 3r + 2 - r^2 - r + 2r^2 - 2r) \\ &= \frac{1}{2}(2r^2 + 2) \\ &= r^2 + 1 \end{aligned}$$

as required. Also, the coefficient of  $x^0$  is  $a_0 = 1 = 0^2 + 1$  and the coefficient of  $x^1$  is  $a_1 - a_0 = 3 - 1 = 2 = 1^2 + 1$ , so the formula  $r^2 + 1$  holds for these two cases as well. Therefore, the coefficient of  $x^r$  is  $r^2 + 1$  for all  $r \geq 0$ .

Now we can sum our series: it is

$$\begin{aligned} 1 + \frac{2}{2} + \frac{5}{4} + \frac{10}{8} + \frac{17}{16} + \dots &= \frac{0^2 + 1}{2^0} + \frac{1^2 + 1}{2^1} + \frac{2^2 + 1}{2^2} + \dots + \frac{r^2 + 1}{2^r} + \dots \\ &= (0^2 + 1) + (1^2 + 1)\left(\frac{1}{2}\right) + \dots + (r^2 + 1)\left(\frac{1}{2}\right)^r + \dots \\ &= \frac{1 - \frac{1}{2} + 2\left(\frac{1}{2}\right)^2}{\left(1 - \frac{1}{2}\right)^3} \\ &= \frac{1}{\left(\frac{1}{8}\right)} \\ &= 8. \end{aligned}$$

(ii) Find the sum of the series

$$1 + 2 + \frac{9}{4} + 2 + \frac{25}{16} + \frac{9}{8} + \frac{49}{64} + \dots$$

The denominators look like powers of 2, so we will rewrite the terms using powers of 2:

$$1 + 2 + \frac{9}{4} + 2 + \frac{25}{16} + \frac{9}{8} + \dots = \frac{1}{1} + \frac{4}{2} + \frac{9}{4} + \frac{16}{8} + \frac{25}{16} + \frac{36}{32} + \frac{49}{64} + \dots$$

and it is clear that the general term is  $r^2/2^{r-1}$ , starting with the term where  $r = 1$ .

We can rewrite this in terms of the series found in part (i) by writing

$$\frac{r^2}{2^{r-1}} = 2 \cdot \frac{r^2}{2^r} = 2 \cdot \frac{r^2 + 1}{2^r} - 2 \cdot \frac{1}{2^r},$$

so our series becomes

$$\begin{aligned} &2 \left( \frac{2}{2} + \frac{5}{4} + \frac{10}{8} + \frac{17}{16} + \dots \right) - 2 \left( \frac{1}{2} + \frac{1}{4} + \frac{1}{8} + \frac{1}{16} + \dots \right) \\ &= 2 \left( 1 + \frac{2}{2} + \frac{5}{4} + \frac{10}{8} + \frac{17}{16} + \dots \right) - 2 \left( 1 + \frac{1}{2} + \frac{1}{4} + \frac{1}{8} + \frac{1}{16} + \dots \right) \\ &= 2 \cdot 8 - 2 \cdot 2 \\ &= 12, \end{aligned}$$

where on the second line, we have introduced the term corresponding to  $r = 0$ , and on the penultimate line, we have used the result from (i) and the sum of the infinite geometric series  $1 + \frac{1}{2} + \frac{1}{4} + \frac{1}{8} + \dots = 1/(1 - \frac{1}{2}) = 2$ .

STEP I 2011 Question 6 continued

An alternative approach is to begin with the result of part (i) and to argue as follows.

We have

$$\begin{aligned}\frac{1-x+2x^2}{(1-x)^3} &= \sum_{r=0}^{\infty} (r^2+1)x^r \\ &= \sum_{r=0}^{\infty} r^2 x^r + \sum_{r=0}^{\infty} x^r \\ &= x \sum_{r=0}^{\infty} r^2 x^{r-1} + \sum_{r=0}^{\infty} x^r.\end{aligned}$$

But our required sum is  $\sum_{r=0}^{\infty} r^2 (\frac{1}{2})^{r-1}$ , so we put  $x = \frac{1}{2}$  into this result and get

$$\frac{1 - \frac{1}{2} + 2(\frac{1}{2})^2}{(1 - \frac{1}{2})^3} = \frac{1}{2} \sum_{r=0}^{\infty} r^2 (\frac{1}{2})^{r-1} + \sum_{r=0}^{\infty} (\frac{1}{2})^r.$$

The last term on the right hand side is our geometric series, summing to 2. The left hand side evaluates to 8, and so we get

$$8 = \frac{1}{2} \sum_{r=0}^{\infty} r^2 (\frac{1}{2})^{r-1} + 2.$$

Thus our series sums to 12, as before.

A third approach is to observe that the series can be written as  $\sum_{r=0}^{\infty} (r+1)^2 x^r = \sum_{r=0}^{\infty} (r^2 + 2r + 1)x^r$  with  $x = \frac{1}{2}$ , then to look for a polynomial  $p(x)$  of degree at most 2 such that the coefficient of  $x^r$  in the expansion of  $p(x)/(1-x)^3$  is exactly  $r^2 + 2r + 1$ , using methods like those in part (i). (The polynomial needs to be of degree at most 2 so that the terms are also correct for  $r = 0$  and  $r = 1$  in addition to the general term being correct.) This turns out to give  $p(x) = x + 1$ , so that the sum is  $(\frac{1}{2} + 1)/(1 - \frac{1}{2})^3 = 12$ .

## Question 7

In this question, you may assume that  $\ln(1+x) \approx x - \frac{1}{2}x^2$  when  $|x|$  is small.

The height of the water in a tank at time  $t$  is  $h$ . The initial height of the water is  $H$  and water flows into the tank at a constant rate. The cross-sectional area of the tank is constant.

- (i) Suppose that water leaks out at a rate proportional to the height of the water in the tank, and that when the height reaches  $\alpha^2 H$ , where  $\alpha$  is a constant greater than 1, the height remains constant. Show that

$$\frac{dh}{dt} = k(\alpha^2 H - h),$$

for some positive constant  $k$ . Deduce that the time  $T$  taken for the water to reach height  $\alpha H$  is given by

$$kT = \ln \left( 1 + \frac{1}{\alpha} \right)$$

and that  $kT \approx \alpha^{-1}$  for large values of  $\alpha$ .

Since the tank has constant cross-sectional area, the volume of water within the tank is proportional to the height of the water.

Therefore we have the height increasing at a rate  $a - bh$ , where  $a$  is the rate of water flowing in divided by the cross-sectional area, and  $b$  is a constant of proportionality representing the rate of water leaking out. In other words, we have

$$\frac{dh}{dt} = a - bh.$$

Now, when  $h = \alpha^2 H$ ,  $\frac{dh}{dt} = 0$ , so  $a - b\alpha^2 H = 0$ , or  $a = b\alpha^2 H$ , giving

$$\frac{dh}{dt} = b\alpha^2 H - bh = b(\alpha^2 H - h).$$

Hence if we write  $k = b$ , we have our desired equation.

We can now solve this by separating variables to get

$$\int \frac{1}{\alpha^2 H - h} dh = \int k dt$$

so that

$$-\ln(\alpha^2 H - h) = kt + c.$$

At  $t = 0$ ,  $h = H$ , so

$$-\ln(\alpha^2 H - H) = c,$$

which finally gives us

$$kt = \ln(\alpha^2 H - H) - \ln(\alpha^2 H - h).$$



STEP I 2011 Question 7 continued

Now at time  $T$ ,  $h = \alpha H$ , so that

$$\begin{aligned} kT &= \ln(\alpha^2 H - H) - \ln(\alpha^2 H - \alpha H) \\ &= \ln\left(\frac{\alpha^2 H - H}{\alpha^2 H - \alpha H}\right) \\ &= \ln\left(\frac{\alpha^2 - 1}{\alpha^2 - \alpha}\right) \\ &= \ln\left(\frac{\alpha + 1}{\alpha}\right) \\ &= \ln\left(1 + \frac{1}{\alpha}\right) \end{aligned}$$

as required.

When  $\alpha$  is large, so that  $\frac{1}{\alpha}$  is small, this is

$$\begin{aligned} kT &= \ln\left(1 + \frac{1}{\alpha}\right) \\ &\approx \frac{1}{\alpha} - \frac{1}{2\alpha^2} \\ &\approx \frac{1}{\alpha}. \end{aligned}$$

- (ii) Suppose that the rate at which water leaks out of the tank is proportional to  $\sqrt{h}$  (instead of  $h$ ), and that when the height reaches  $\alpha^2 H$ , where  $\alpha$  is a constant greater than 1, the height remains constant. Show that the time  $T'$  taken for the water to reach height  $\alpha H$  is given by

$$cT' = 2\sqrt{H} \left(1 - \sqrt{\alpha} + \alpha \ln\left(1 + \frac{1}{\sqrt{\alpha}}\right)\right)$$

for some positive constant  $c$  and that  $cT' \approx \sqrt{H}$  for large values of  $\alpha$ .

We proceed just as in part (i).

This time we have

$$\frac{dh}{dt} = a - b\sqrt{h},$$

where  $a$  and  $b$  are some constants. Now, when  $h = \alpha^2 H$ ,  $\frac{dh}{dt} = 0$ , so  $a - b\sqrt{\alpha^2 H} = 0$ , which yields  $a = b\alpha\sqrt{H}$ . We thus have

$$\frac{dh}{dt} = b\alpha\sqrt{H} - b\sqrt{h} = b(\alpha\sqrt{H} - \sqrt{h}).$$

So if this time we write  $c = b$ , we have our desired differential equation.

We again solve this by separating variables to get

$$\int \frac{1}{\alpha\sqrt{H} - \sqrt{h}} dh = \int c dt.$$

To integrate the left hand side, we use the substitution  $u = \sqrt{h}$ , so that  $h = u^2$  and  $\frac{dh}{du} = 2u$ . This gives us

$$\int \frac{1}{\alpha\sqrt{H} - u} \cdot 2u du = ct.$$

STEP I 2011 Question 7 continued

We divide the numerator by the denominator to get

$$\begin{aligned}
 ct &= \int \frac{-2(\alpha\sqrt{H} - u) + 2\alpha\sqrt{H}}{\alpha\sqrt{H} - u} du \\
 &= \int -2 + \frac{2\alpha\sqrt{H}}{\alpha\sqrt{H} - u} du \\
 &= -2u - 2\alpha\sqrt{H} \ln(\alpha\sqrt{H} - u) + c' \\
 &= -2\sqrt{h} - 2\alpha\sqrt{H} \ln(\alpha\sqrt{H} - \sqrt{h}) + c'
 \end{aligned}$$

where  $c'$  is a constant.

An alternative way of doing this step is to use the substitution  $v = \alpha\sqrt{H} - \sqrt{h}$ , so that  $h = (\alpha\sqrt{H} - v)^2 = \alpha^2 H - 2\alpha v\sqrt{H} + v^2$  and  $\frac{dh/dv}{=} -2\alpha\sqrt{H} + 2v$ . This gives us

$$\begin{aligned}
 ct &= \int \frac{1}{v}(-2\alpha\sqrt{H} + 2v) = ct \\
 &= \int \frac{-2\alpha\sqrt{H}}{v} + 2 dv \\
 &= -2\alpha\sqrt{H} \ln v + 2v + c' \\
 &= -2\alpha\sqrt{H} \ln(\alpha\sqrt{H} - \sqrt{h}) + 2(\alpha\sqrt{H} - \sqrt{h}) + c'
 \end{aligned}$$

where  $c'$  is again a constant.

At  $t = 0$ ,  $h = H$ , so

$$c' = 2\sqrt{H} + 2\alpha\sqrt{H} \ln(\alpha\sqrt{H} - \sqrt{H}).$$

Now at time  $T'$ ,  $h = \alpha H$ , so that

$$\begin{aligned}
 cT' &= -2\sqrt{\alpha H} - 2\alpha\sqrt{H} \ln(\alpha\sqrt{H} - \sqrt{\alpha H}) + 2\sqrt{H} + 2\alpha\sqrt{H} \ln(\alpha\sqrt{H} - \sqrt{H}) \\
 &= 2\sqrt{H}(1 - \sqrt{\alpha}) + 2\alpha\sqrt{H} \ln \left( \frac{\alpha\sqrt{H} - \sqrt{H}}{\alpha\sqrt{H} - \sqrt{\alpha H}} \right) \\
 &= 2\sqrt{H} \left( 1 - \sqrt{\alpha} + \alpha \ln \left( \frac{(\sqrt{\alpha} + 1)(\sqrt{\alpha} - 1)}{\sqrt{\alpha}(\sqrt{\alpha} - 1)} \right) \right) \\
 &= 2\sqrt{H} \left( 1 - \sqrt{\alpha} + \alpha \ln \left( \frac{\sqrt{\alpha} + 1}{\sqrt{\alpha}} \right) \right) \\
 &= 2\sqrt{H} \left( 1 - \sqrt{\alpha} + \alpha \ln \left( 1 + \frac{1}{\sqrt{\alpha}} \right) \right)
 \end{aligned}$$

as required.

When  $\alpha$  is large,  $1/\sqrt{\alpha}$  is small, so this gives

$$\begin{aligned}
 cT' &= 2\sqrt{H} \left( 1 - \sqrt{\alpha} + \alpha \ln \left( 1 + \frac{1}{\sqrt{\alpha}} \right) \right) \\
 &\approx 2\sqrt{H} \left( 1 - \sqrt{\alpha} + \alpha \left( \frac{1}{\sqrt{\alpha}} - \frac{1}{2\alpha} \right) \right) \\
 &\approx 2\sqrt{H} \left( 1 - \sqrt{\alpha} + \sqrt{\alpha} - \frac{1}{2} \right) \\
 &\approx \sqrt{H}.
 \end{aligned}$$

### Question 8

(i) The numbers  $m$  and  $n$  satisfy

$$m^3 = n^3 + n^2 + 1. \quad (*)$$

(a) Show that  $m > n$ . Show also that  $m < n + 1$  if and only if  $2n^2 + 3n > 0$ . Deduce that  $n < m < n + 1$  unless  $-\frac{3}{2} \leq n \leq 0$ .

As  $n^2 \geq 0$ , we have

$$\begin{aligned} m^3 &= n^3 + n^2 + 1 \\ &\geq n^3 + 1 \\ &> n^3 \end{aligned}$$

so  $m > n$  as the function  $f(x) = x^3$  is strictly increasing.

Now

$$\begin{aligned} m < n + 1 &\iff m^3 < (n + 1)^3 \\ &\iff n^3 + n^2 + 1 < n^3 + 3n^2 + 3n + 1 \\ &\iff 0 < 2n^2 + 3n \end{aligned}$$

so  $m < n + 1$  if and only if  $2n^2 + 3n > 0$ .

Combining these two conditions,  $n < m$  always, and  $m < n + 1$  if and only if  $2n^2 + 3n > 0$ , so  $n < m < n + 1$  unless  $2n^2 + 3n \leq 0$ .

Now  $2n^2 + 3n = 2n(n + \frac{3}{2}) \leq 0$  if and only if  $-\frac{3}{2} \leq n \leq 0$ , so  $n < m < n + 1$  unless  $-\frac{3}{2} \leq n \leq 0$ .

(b) Hence show that the only solutions of (\*) for which both  $m$  and  $n$  are integers are  $(m, n) = (1, 0)$  and  $(m, n) = (1, -1)$ .

If solution to (\*) has both  $m$  and  $n$  integer, we cannot have  $n < m < n + 1$ , as there is no integer strictly between two consecutive integers. We therefore require  $-\frac{3}{2} \leq n \leq 0$ , so  $n = -1$  or  $n = 0$ .

If  $n = -1$ , then  $m^3 = 1$ , so  $m = 1$ .

If  $n = 0$ , then  $m^3 = 1$ , so  $m = 1$ .

Thus the only integer solutions are  $(m, n) = (1, 0)$  and  $(m, n) = (1, -1)$ .

(ii) Find all integer solutions of the equation

$$p^3 = q^3 + 2q^2 - 1.$$

We try a similar argument here. We start by determining whether  $p > q$ :

$$\begin{aligned} p > q &\iff p^3 > q^3 \\ &\iff q^3 + 2q^2 - 1 > q^3 \\ &\iff 2q^2 > 1 \\ &\iff q^2 > \frac{1}{2} \end{aligned}$$

STEP I 2011 Question 8 continued

so that  $p > q$  unless  $q^2 \leq \frac{1}{2}$ , and  $q^2 \leq \frac{1}{2}$  if and only if  $-\frac{1}{\sqrt{2}} \leq q \leq \frac{1}{\sqrt{2}}$ .

We now determine the conditions under which  $p < q + 1$ :

$$\begin{aligned} p < q + 1 &\iff p^3 < (q + 1)^3 \\ &\iff q^3 + 2q^2 - 1 < q^3 + 3q^2 + 3q + 1 \\ &\iff 0 < q^2 + 3q + 2 \end{aligned}$$

so  $p < q + 1$  unless  $q^2 + 3q + 2 \leq 0$ . This condition becomes  $(q + 1)(q + 2) \leq 0$ , so  $-2 \leq q \leq -1$ .

Thus  $q < p < q + 1$  unless  $-\frac{1}{\sqrt{2}} \leq q \leq \frac{1}{\sqrt{2}}$  or  $-2 \leq q \leq -1$ .

If  $p$  and  $q$  are both integers, this then limits us to three cases:  $q = 0$ ,  $q = -1$  and  $q = -2$ .

If  $q = 0$ , then  $p^3 = -1$ , so  $p = -1$ .

If  $q = -1$ , then  $p^3 = 0$ , so  $p = 0$ .

If  $q = -2$ , then  $p^3 = -1$ , so  $p = -1$ .

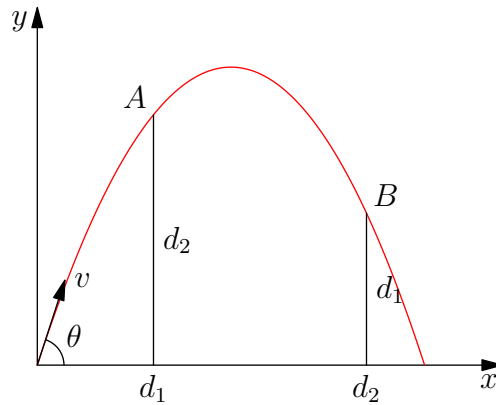
Hence there are three integer solutions:  $(p, q) = (-1, 0)$ ,  $(p, q) = (-1, -2)$  and  $(p, q) = (0, -1)$ .

### Question 9

A particle is projected at an angle  $\theta$  above the horizontal from a point on a horizontal plane. The particle just passes over two walls that are at horizontal distances  $d_1$  and  $d_2$  from the point of projection and are of heights  $d_2$  and  $d_1$ , respectively. Show that

$$\tan \theta = \frac{d_1^2 + d_1 d_2 + d_2^2}{d_1 d_2}.$$

We draw a sketch of the situation:



We let the speed of projection be  $v$  and the time from launch be  $t$ . We resolve the components of velocity to find the position  $(x, y)$  at time  $t$ :

$$\mathcal{R}(\rightarrow) \quad x = (v \cos \theta)t \quad (1)$$

$$\mathcal{R}(\uparrow) \quad y = (v \sin \theta)t - \frac{1}{2}gt^2 \quad (2)$$

At  $A$  (distance  $d_1$  from the point of projection), we find

$$(v \cos \theta)t = d_1$$

$$(v \sin \theta)t - \frac{1}{2}gt^2 = d_2$$

so that

$$t = \frac{d_1}{v \cos \theta}$$

giving

$$\frac{v \sin \theta}{v \cos \theta} d_1 - \frac{\frac{1}{2}gd_1^2}{v^2 \cos^2 \theta} = d_2,$$

so that

$$d_2 = d_1 \tan \theta - \frac{gd_1^2}{2v^2 \cos^2 \theta}.$$

This can be rearranged to get

$$\frac{gd_1^2}{2v^2 \cos^2 \theta} = d_1 \tan \theta - d_2. \quad (3)$$

(An alternative is to first eliminate  $t$  from equations (1) and (2) first to get

$$y = x \tan \theta - \frac{gx^2}{2v^2 \cos^2 \theta} \quad (4)$$

STEP I 2011 Question 9 continued

and then substitute  $x = d_1$  and  $y = d_2$  into this formula.)

Likewise, at  $B$  we get (on swapping  $d_1$  and  $d_2$ ):

$$\frac{gd_2^2}{2v^2 \cos^2 \theta} = d_2 \tan \theta - d_1. \quad (5)$$

Multiplying (3) by  $d_2^2$  gives the same left hand side as when we multiply (5) by  $d_1^2$ , so that

$$(d_1 \tan \theta - d_2)d_2^2 = (d_2 \tan \theta - d_1)d_1^2.$$

Expanding this gives

$$d_1 d_2^2 \tan \theta - d_2^3 = d_1^2 d_2 \tan \theta - d_1^3.$$

Collecting terms gives:

$$(d_1 d_2^2 - d_1^2 d_2) \tan \theta = d_2^3 - d_1^3,$$

and we can factorise this (recalling that  $a^3 - b^3 = (a - b)(a^2 + ab + b^2)$ ) to get

$$d_1 d_2 (d_2 - d_1) \tan \theta = (d_2 - d_1)(d_2^2 + d_2 d_1 + d_1^2).$$

Dividing by  $d_1 d_2 (d_2 - d_1) \neq 0$  gives us our desired result:

$$\tan \theta = \frac{d_1^2 + d_1 d_2 + d_2^2}{d_1 d_2}.$$

*Find (and simplify) an expression in terms of  $d_1$  and  $d_2$  only for the range of the particle.*

The range can be found by determining where  $y = 0$ , so  $(v \sin \theta)t - \frac{1}{2}gt^2 = 0$ . This has solutions  $t = 0$  (the point of projection) and  $t = (2v/g) \sin \theta$ . At this point,

$$\begin{aligned} x &= (v \cos \theta)t = \frac{2v^2 \sin \theta \cos \theta}{g} \\ &= \frac{2v^2 \cos^2 \theta}{g} \tan \theta. \end{aligned}$$

We have written  $\sin \theta = \cos \theta \tan \theta$  because equation (3) gives us a formula for the fraction part of this expression: we get

$$x = \frac{d_1^2}{d_1 \tan \theta - d_2} \tan \theta.$$

Alternatively, using equation (4), we can solve for  $y = 0$  to get  $x = 0$  or

$$\tan \theta = \frac{gx}{2v^2 \cos^2 \theta}.$$

Since  $x = 0$  at the start, the other solution gives the range. Using equation (3) to write

$$\frac{g}{2v^2 \cos^2 \theta} = \frac{d_1 \tan \theta - d_2}{d_1^2},$$

we deduce that

$$x = \frac{d_1^2 \tan \theta}{d_1 \tan \theta - d_2}$$

STEP I 2011 Question 9 continued

as before.

We can now simply substitute in our formula for  $\tan \theta$ , simplify a little, and we will be done:

$$\begin{aligned}x &= \frac{d_1^2 \left( \frac{d_1^2 + d_1 d_2 + d_2^2}{d_1 d_2} \right)}{d_1 \left( \frac{d_1^2 + d_1 d_2 + d_2^2}{d_1 d_2} \right) - d_2} \\&= \frac{d_1 (d_1^2 + d_1 d_2 + d_2^2)}{(d_1^2 + d_1 d_2 + d_2^2) - d_2^2} \\&= \frac{d_1 (d_1^2 + d_1 d_2 + d_2^2)}{d_1^2 + d_1 d_2} \\&= \frac{d_1^2 + d_1 d_2 + d_2^2}{d_1 + d_2}\end{aligned}$$

*Alternative approach*

An entirely different approach to the whole question is as follows. We know that the path of the projectile is a parabola. Taking axes as in the above sketch, the path passes through the three points  $(0, 0)$ ,  $(d_1, d_2)$  and  $(d_2, d_1)$ . If the equation of the curve is  $y = ax^2 + bx + c$ , then this gives three simultaneous equations:

$$\begin{aligned}0 &= 0a + 0b + c \\d_2 &= d_1^2 a + d_1 b + c \\d_1 &= d_2^2 a + d_2 b + c.\end{aligned}$$

The first gives  $c = 0$ , and we can then solve the other two equations to get  $a$  and  $b$ . This gives

$$\begin{aligned}a &= \frac{d_2^2 - d_1^2}{d_1^2 d_2 - d_2^2 d_1} = -\frac{d_1 + d_2}{d_1 d_2} \\b &= \frac{d_1^3 - d_2^3}{d_1^2 d_2 - d_2^2 d_1} = \frac{d_1^2 + d_1 d_2 + d_2^2}{d_1 d_2}\end{aligned}$$

Then the gradient is given by  $dy/dx = 2ax + b$ , so at  $x = 0$ , the gradient  $dy/dx = b$ , which gives us  $\tan \theta$  (as the gradient is the tangent of angle made with the  $x$ -axis). The range is given by solving  $y = 0$ , so  $x(ax + b) = 0$ , giving  $x = -b/a = (d_1^2 + d_1 d_2 + d_2^2)/(d_1 + d_2)$  as before.

### Question 10

A particle,  $A$ , is dropped from a point  $P$  which is at a height  $h$  above a horizontal plane. A second particle,  $B$ , is dropped from  $P$  and first collides with  $A$  after  $A$  has bounced on the plane and before  $A$  reaches  $P$  again. The bounce and the collision are both perfectly elastic. Explain why the speeds of  $A$  and  $B$  immediately before the first collision are the same.

Assume they collide at height  $H < h$ . The perfectly elastic bounce means that there was no loss of energy, so  $A$  has the same total energy at height  $H$  on its upwards journey as it did when travelling downwards. We can work out the speeds at the point of collision, calling them  $v_A$  and  $v_B$  for  $A$  and  $B$  respectively. We write  $M$  for the mass of  $A$  and  $m$  for the mass of  $B$  (as in the next part of the question). We have, by conservation of energy

$$MgH + \frac{1}{2}Mv_A^2 = Mgh$$

$$mgH + \frac{1}{2}mv_B^2 = mgh$$

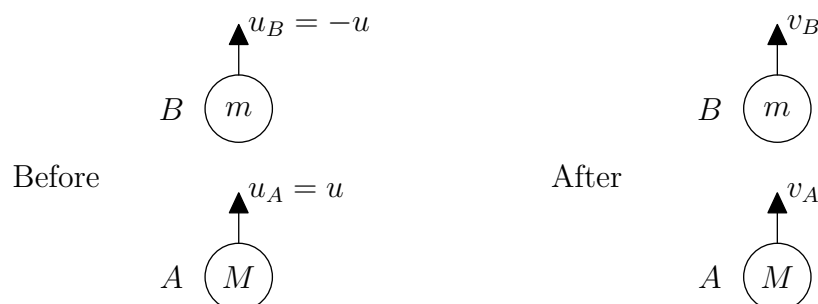
so that  $v_A^2 = 2(gh - gH)$  and  $v_B^2 = 2(gh - gH)$ , so  $|v_A| = |v_B|$  and the speeds of  $A$  and  $B$  are the same.

The masses of  $A$  and  $B$  are  $M$  and  $m$ , respectively, where  $M > 3m$ , and the speed of the particles immediately before the first collision is  $u$ . Show that both particles move upwards after their first collision and that the maximum height of  $B$  above the plane after the first collision and before the second collision is

$$h + \frac{4M(M - m)u^2}{(M + m)^2g}.$$

This begins as a standard collision of particles question, and so I will repeat the advice from the 2010 mark scheme: **ALWAYS** draw a diagram for collisions questions; you will do yourself (and the marker) no favours if you try to keep all of the directions in your head, and you are very likely to make a mistake. My recommendation is to always have all of the velocity arrows pointing in the same direction. In this way, there is no possibility of getting the signs wrong in the Law of Restitution: it **always** reads  $v_1 - v_2 = e(u_2 - u_1)$  or  $\frac{v_1 - v_2}{u_2 - u_1} = e$ , and you only have to be careful with the signs of the given velocities. The algebra will then keep track of the directions of the unknown velocities for you.

A diagram showing the first collision is as follows.





STEP I 2011 Question 10 continued

Then Conservation of Momentum gives

$$Mu_A + mu_B = Mv_A + mv_B$$

so

$$Mu - mu = Mv_A + mv_B,$$

and Newton's Law of Restitution gives

$$v_B - v_A = 1(u_A - u_B)$$

(using  $e = 1$  as the collision is perfectly elastic). Substituting  $u_A = u$  and  $u_B = -u$  gives

$$Mv_A + mv_B = (M - m)u \quad (1)$$

$$v_B - v_A = 2u. \quad (2)$$

Then solving these equations (by (1)  $- m \times$  (2) and (1)  $+ M \times$  (2)) gives

$$v_A = \frac{(M - 3m)u}{M + m} \quad (3)$$

$$v_B = \frac{(3M - m)u}{M + m}. \quad (4)$$

To show that both particles move upwards after their first collision, we need to show that  $v_A > 0$  and  $v_B > 0$ . From equation (3) and  $M > 3m$  (given in the question), we see that  $v_A > 0$ ; from equation (4) and  $3M - m > 9m - m > 0$  (as  $M > 3m$ ), we see that  $v_B > 0$ . Thus both particles move upwards after their first collision.

To find the maximum height of  $B$  between the two collisions, we begin by finding the maximum height that would be achieved by  $B$  following the first collision assuming that there is no second collision. We then explain why the second collision occurs during  $B$ 's subsequent downward motion and deduce that it reaches that maximum height between the collisions.

The kinetic energy (KE) of  $B$  before the first collision is  $\frac{1}{2}mu^2$  and after the first collision is

$$\frac{1}{2}mv_B^2 = \frac{1}{2}m \left( \frac{3M - m}{M + m} \right)^2 u^2,$$

so that  $B$  has a gain in KE of  $\frac{1}{2}mv_B^2 - \frac{1}{2}mu^2$ . When  $B$  is again at height  $h$  above the plane, which is where it was dropped from, it now has this gain as its KE. (This is because the KE just before the first collision has come from the loss of GPE; when the particle is once again at height  $h$ , this original KE ( $\frac{1}{2}mu^2$ ) has been converted back into GPE.)

The particle  $B$  can therefore rise by a further height of  $H$ , where

$$mgH = \frac{1}{2}mv_B^2 - \frac{1}{2}mu^2 = \frac{1}{2}mu^2 \left( \left( \frac{3M - m}{M + m} \right)^2 - 1 \right),$$

so

$$\begin{aligned} H &= \frac{u^2}{2g} \left( \frac{9M^2 - 6Mm + m^2}{(M + m)^2} - \frac{M^2 + 2Mm + m^2}{(M + m)^2} \right) \\ &= \frac{u^2}{2g} \left( \frac{8M^2 - 8Mm}{(M + m)^2} \right) \\ &= \frac{4u^2}{g} \left( \frac{M(M - m)}{(M + m)^2} \right). \end{aligned}$$

STEP I 2011 Question 10 continued

Thus the maximum height reached by  $B$  after the first collision, assuming that the second collision occurs after  $B$  has started falling is

$$h + H = h + \frac{4M(M - m)u^2}{(M + m)^2g}.$$

Finally, we have to explain why  $A$  does not catch up with  $B$  before  $B$  begins to fall. But this is easy:  $B$  initially has a greater upward velocity than  $A$  (as  $v_B - v_A = 2u > 0$ ), so the height of  $B$  is always greater than the height of  $A$ . Therefore they can only collide again after  $A$  has bounced on the ground and is in its ascent while  $B$  is in its descent.

*Alternative approach: using constant acceleration and “suvat”*

An alternative approach is to use the formulæ for constant acceleration (“suvat”), as follows.

Just before collision,  $B$  has speed  $u$ , so the height  $H$  of  $B$  at this point is given by the “suvat” equation  $v^2 = u^2 + 2as$ , taking positive to be downwards:

$$u^2 = 0^2 + 2g(h - H),$$

giving  $H = h - u^2/2g$ .

Immediately after the collision,  $B$  has velocity upwards given by equation (4) above. At the maximum height,  $h_{\max}$ , the speed of  $B$  is zero, so we can determine the maximum height using  $v^2 = u^2 + 2as$  again; this time, we take positive to be upwards, so  $a = -g$ :

$$0^2 = \left( \frac{(3M - m)u}{M + m} \right)^2 - 2g(h_{\max} - H).$$

(Note that  $h_{\max} - H > 0$ .)

Rearranging this gives

$$\begin{aligned} h_{\max} &= H + \frac{1}{2g} \left( \frac{(3M - m)u}{M + m} \right)^2 \\ &= h - \frac{u^2}{2g} + \frac{u^2}{2g} \left( \frac{(3M - m)}{M + m} \right)^2 \\ &= h + \frac{u^2}{2g} \left( \frac{(3M - m)^2 - (M + m)^2}{(M + m)^2} \right) \\ &= h + \frac{u^2}{2g} \left( \frac{8M^2 - 8Mm}{(M + m)^2} \right) \\ &= h + \frac{4M(M - m)u^2}{(M + m)^2g} \end{aligned}$$

as required.

### Question 11

A thin non-uniform bar  $AB$  of length  $7d$  has centre of mass at a point  $G$ , where  $AG = 3d$ . A light inextensible string has one end attached to  $A$  and the other end attached to  $B$ . The string is hung over a smooth peg  $P$  and the bar hangs freely in equilibrium with  $B$  lower than  $A$ . Show that

$$3 \sin \alpha = 4 \sin \beta,$$

where  $\alpha$  and  $\beta$  are the angles  $PAB$  and  $PBA$ , respectively.

We begin by drawing a diagram of the situation, showing the forces involved (the tension in the string, which is the same at  $A$  and  $B$  since the peg is smooth, and the weight of the bar acting through  $G$ ). Clearly  $BG = 4d$ , which we have shown as well.

We have indicated the angles  $\alpha$ ,  $\beta$  and  $\phi$  as defined in the question, and have also introduced the angle  $\theta$  as angle  $AGP$ . The point  $M$  is the foot of the perpendicular from  $P$  to  $AB$ , which is used in some of the methods of solution.

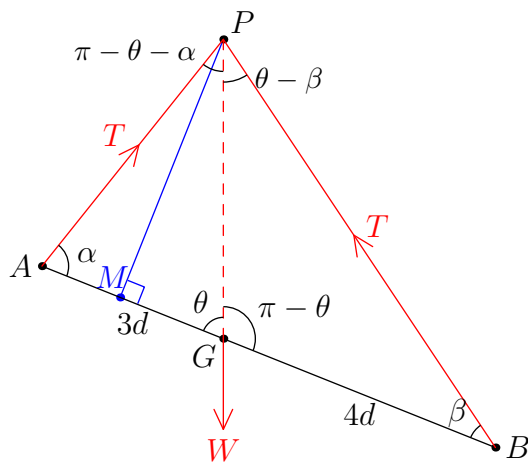


Diagram 1: Using  $\theta$  for angle between rod and vertical

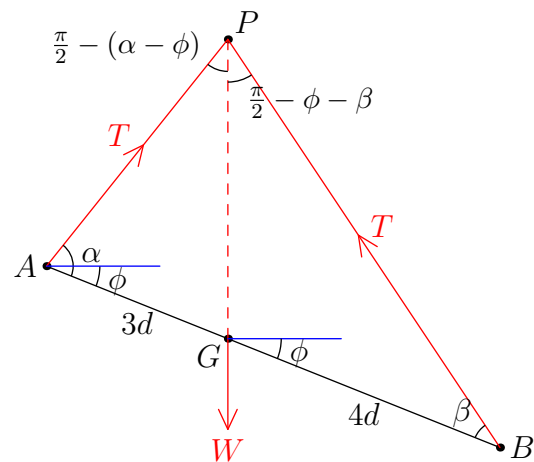


Diagram 2: Using  $\phi$  for angle between rod and horizontal

Note that we have drawn the sketch with the weight passing through  $P$ . This must be the case: both tensions pass through  $P$  and the system is in equilibrium. So taking moments around  $P$  shows that  $W$  times the distance of the line of force of  $W$  from  $P$  must be zero, so that  $W$  acts through  $P$ .

The simplest way of showing that  $3 \sin \alpha = 4 \sin \beta$  is to take moments about  $G$ :

$$\mathcal{M}(\hat{G}) \quad T.3d \sin \alpha - T.4d \sin \beta = 0$$

so that  $3 \sin \alpha = 4 \sin \beta$ .

An alternative approach is to apply the sine rule to the triangles  $PAG$  and  $PBG$  and resolve horizontally; this, though, is a somewhat longer-winded method.

STEP I 2011 Question 11 continued

Given that  $\cos \beta = \frac{4}{5}$  and that  $\alpha$  is acute, find in terms of  $d$  the length of the string and show that the angle of inclination of the bar to the horizontal is  $\arctan \frac{1}{7}$ .

From  $\cos \beta = \frac{4}{5}$ , we deduce  $\sin \beta = \frac{3}{5}$ , and hence  $\sin \alpha = \frac{4}{3} \sin \beta = \frac{4}{5}$ . Thus  $\cos \alpha = \pm \frac{3}{5}$ , and since  $\alpha$  is acute,  $\cos \alpha = \frac{3}{5}$ .

There are numerous ways of finding the length of the string,  $l$ , in terms of  $d$ . We present a few approaches here.

*Approach 1: Show that  $\angle APB = \frac{\pi}{2}$*

To find the length of the string, we first find the angle  $APB$ .

One method is to note that  $\angle APB = \pi - \alpha - \beta$ , so

$$\begin{aligned} \sin(\pi - \alpha - \beta) &= \sin(\alpha + \beta) \\ &= \sin \alpha \cos \beta + \cos \alpha \sin \beta \\ &= \frac{4}{5} \times \frac{4}{5} + \frac{3}{5} \times \frac{3}{5} \\ &= 1, \end{aligned}$$

so  $\angle APB = \frac{\pi}{2}$  and the triangle  $APB$  is right-angled at  $P$ .

Alternatively, as  $\sin \alpha = \cos \beta$ , we must have  $\alpha + \beta = \frac{\pi}{2}$ , so  $\angle APB = \frac{\pi}{2}$ .

Thus  $AP = AB \cos \alpha = 7d \cdot \frac{3}{5} = \frac{21}{5}d$  and  $BP = AB \sin \alpha = 7d \cdot \frac{4}{5} = \frac{28}{5}d$ , so the string has length  $(\frac{21}{5} + \frac{28}{5})d = \frac{49}{5}d$ .

*Approach 2: Trigonometry with the perpendicular from  $P$*

In the triangle  $APB$ , we draw a perpendicular from  $P$  to  $AB$ , meeting  $AB$  at  $M$ . Then  $PM = AP \sin \alpha = BP \sin \beta$ . (This can also be shown directly by applying the sine rule:  $AP/\sin \beta = BP/\sin \alpha$ .)

We also have  $AB = AM + BM = AP \cos \alpha + BP \cos \beta = 7d$ .

Now using our known values of  $\sin \alpha$ , etc., these equations become  $\frac{4}{5}AP = \frac{3}{5}BP$  so that  $BP = \frac{4}{3}AP$ , and  $\frac{3}{5}AP + \frac{4}{5}BP = 7d$ .

Combining these gives  $\frac{3}{5}AP + \frac{16}{15}AP = 7d$ , so  $AP = \frac{21}{5}d$  and hence  $BP = \frac{28}{5}d$  and  $l = AP + BP = \frac{49}{5}d$ .

*Approach 3: Cosine rule*

We apply the cosine rule to the triangle  $APB$ , and we write  $x = AP$  and  $y = BP$  for simplicity. This gives us

$$\begin{aligned} x^2 &= AB^2 + y^2 - 2AB \cdot y \cos \beta && \text{or} \\ y^2 &= AB^2 + x^2 - 2AB \cdot x \cos \alpha. \end{aligned}$$

There are different ways of continuing from here. The most straightforward is probably to begin by showing that  $BP = \frac{4}{3}AP$  or  $y = \frac{4}{3}x$  as in Approach 2. This then simplifies the two equations

STEP I 2011 Question 11 continued

to give

$$\begin{aligned} \left(\frac{3}{4}y\right)^2 &= (7d)^2 + y^2 - 2(7d).y.\frac{4}{5} && \text{or} \\ \left(\frac{4}{3}x\right)^2 &= (7d)^2 + x^2 - 2(7d).x.\frac{3}{5}. \end{aligned}$$

We can then expand and rearrange these quadratics to get

$$\begin{aligned} \frac{7}{16}y^2 - \frac{56}{5}dy + 49d^2 &= 0 && \text{or} \\ \frac{7}{9}x^2 + \frac{42}{5}dx - 49d^2 &= 0. \end{aligned}$$

Dividing by 7 and clearing fractions (multiplying by 80 and 45 respectively) gives

$$\begin{aligned} 5y^2 - 128dy + 560d^2 &= 0 && \text{or} \\ 5x^2 + 54dx - 315d^2 &= 0. \end{aligned}$$

These quadratics turn out to factorise as

$$\begin{aligned} (y - 20d)(5y - 28d) &= 0 && \text{or} \\ (x + 15d)(5x - 21d) &= 0. \end{aligned}$$

The first equation gives two possibilities:  $y = 20d$  or  $y = \frac{28}{5}d$ , whereas the second only gives one:  $x = \frac{21}{5}d$ .

For the first equation,  $y = 20d$  would imply  $x = \frac{3}{4}y = 15d$ , but then we would have

$$\cos \alpha = \frac{AB^2 + x^2 - y^2}{2AB.x} = \frac{49d^2 + 225d^2 - 400d^2}{14d.15d} < 0,$$

which is not possible as  $\alpha$  is acute.

So we must have  $x = \frac{21}{5}d$  and  $y = \frac{28}{5}d$ , and hence  $l = x + y = \frac{49}{5}d$ .

*Approach 4: Sine rule*

Using the sine rule on the triangle  $APB$ , we have

$$\frac{AB}{\sin(\pi - \alpha - \beta)} = \frac{AP}{\sin \beta} = \frac{BP}{\sin \alpha}.$$

We use  $\sin(\pi - \phi) = \sin \phi$  and the addition (compound angle) formula to write

$$\begin{aligned} \sin(\pi - \alpha - \beta) &= \sin(\alpha + \beta) \\ &= \sin \alpha \cos \beta + \cos \alpha \sin \beta \\ &= \frac{4}{5} \times \frac{4}{5} + \frac{3}{5} \times \frac{3}{5} \\ &= 1, \end{aligned}$$

so that the sine rule becomes

$$\frac{7d}{1} = \frac{AP}{3/5} = \frac{BP}{4/5},$$

giving  $AP = \frac{21}{5}d$ ,  $BP = \frac{28}{5}d$  and hence  $l = AP + BP = \frac{49}{5}d$ .

We now find  $\phi$ , the angle of inclination of the bar to the horizontal. Referring to the above diagrams, we have  $\phi = \frac{\pi}{2} - \theta$ , so  $\tan \phi = \cot \theta$ .

Here again are several approaches to this problem.

STEP I 2011 Question 11 continued

*Approach 1: Resolving forces horizontally and vertically*

We resolve horizontally to get

$$\mathcal{R}(\rightarrow) \quad T \sin(\pi - \theta - \alpha) - T \sin(\theta - \beta) = 0.$$

Therefore we get

$$\sin(\theta + \alpha) = \sin(\theta - \beta).$$

We now use the addition formula for sine to expand these, and then substitute in our values for  $\sin \alpha$ , etc., giving:

$$\sin \theta \cos \alpha + \cos \theta \sin \alpha = \sin \theta \cos \beta - \cos \theta \sin \beta$$

so

$$\frac{3}{5} \sin \theta + \frac{4}{5} \cos \theta = \frac{4}{5} \sin \theta - \frac{3}{5} \cos \theta$$

giving

$$\frac{7}{5} \cos \theta = \frac{1}{5} \sin \theta.$$

Dividing by  $\cos \theta$  now gives  $\cot \theta = \frac{1}{7}$ , hence the angle made with the horizontal is given by  $\tan \phi = \frac{1}{7}$ , yielding  $\phi = \arctan \frac{1}{7}$  as required.

Alternatively, using  $\phi$  instead of  $\theta$  in the original equations, we get

$$\mathcal{R}(\rightarrow) \quad T \sin\left(\frac{\pi}{2} + \phi - \alpha\right) - T \sin\left(\frac{\pi}{2} - \phi - \beta\right) = 0,$$

which simplifies (on dividing by  $T \neq 0$  and using  $\sin\left(\frac{\pi}{2} - x\right) = \cos x$ ) to

$$\cos(\alpha - \phi) - \cos(\phi + \beta) = 0.$$

The rest of the argument follows as before.

*Approach 2: Resolving forces parallel and perpendicular to the rod*

We resolve parallel to the rod to get

$$\mathcal{R}(\searrow) \quad T \cos \alpha + W \cos \theta - T \cos \beta = 0$$

and perpendicular to the rod to get

$$\mathcal{R}(\nearrow) \quad T \sin \alpha - W \sin \theta + T \sin \beta = 0.$$

Rearranging these gives:

$$W \cos \theta = -T \cos \alpha + T \cos \beta$$

$$W \sin \theta = T \sin \alpha + T \sin \beta.$$

Dividing these equations gives

$$\begin{aligned} \cot \theta &= \frac{-\cos \alpha + \cos \beta}{\sin \alpha + \sin \beta} \\ &= \frac{-\frac{3}{5} + \frac{4}{5}}{\frac{4}{5} + \frac{3}{5}} \\ &= \frac{1}{7}. \end{aligned}$$

STEP I 2011 Question 11 continued

Since  $\tan \phi = \cot \theta$ , as we noted above, we have  $\tan \phi = \frac{1}{7}$ , so  $\phi = \arctan \frac{1}{7}$  as required.

*Approach 3: Dropping a perpendicular*

In the triangle  $APB$ , we draw a perpendicular from  $P$  to  $AB$ , meeting  $AB$  at  $M$ . Then  $PM = AP \sin \alpha = \frac{21}{5}d \cdot \frac{4}{5} = \frac{84}{25}d$  and  $AM = AP \cos \alpha = \frac{21}{5}d \cdot \frac{3}{5} = \frac{63}{25}d$ . As  $AG = 3d$ , it follows that  $MG = AG - AM = \frac{12}{25}d$ .

Then (see the diagram above) we have  $\tan \theta = PM/MG = \frac{84}{25}d / \frac{12}{25}d = 7$  so that  $\cot \theta = \tan \phi = \frac{1}{7}$ , giving  $\phi = \arctan \frac{1}{7}$  as required.

*Approach 4: PG bisects  $\angle APB$*

As in approach 1 above, we resolve horizontally (using diagram 2) to get

$$T \sin\left(\frac{\pi}{2} - (\alpha - \phi)\right) - T \sin\left(\frac{\pi}{2} - \phi - \beta\right) = 0.$$

Since both of the angles involved here are acute (as the triangle  $BGP$  has an obtuse angle at  $G$ ), they must be equal, giving  $\alpha - \phi = \phi + \beta$ , so that  $2\phi = \alpha - \beta$ .

Hence we have

$$\begin{aligned} \cos 2\phi &= \cos \alpha \cos \beta + \sin \alpha \sin \beta \\ &= \frac{3}{5} \cdot \frac{4}{5} + \frac{4}{5} \cdot \frac{3}{5} \\ &= \frac{24}{25}. \end{aligned}$$

We therefore deduce using  $\cos 2\phi = 2 \cos^2 \phi - 1$  that  $\cos^2 \phi = \frac{49}{50}$  and  $\sin^2 \phi = \frac{1}{50}$ . It follows that  $\tan^2 \phi = \sin^2 \phi / \cos^2 \phi = \frac{1}{49}$ , giving  $\tan \phi = \frac{1}{7}$  (the positive root as  $\phi$  is acute) or  $\phi = \arctan \frac{1}{7}$  as required.

## Question 12

I am selling raffle tickets for £1 per ticket. In the queue for tickets, there are  $m$  people each with a single £1 coin and  $n$  people each with a single £2 coin. Each person in the queue wants to buy a single raffle ticket and each arrangement of people in the queue is equally likely to occur. Initially, I have no coins and a large supply of tickets. I stop selling tickets if I cannot give the required change.

- (i) In the case  $n = 1$  and  $m \geq 1$ , find the probability that I am able to sell one ticket to each person in the queue.

I can sell one ticket to each person as long as I have a £1 coin when the single person with a £2 coin arrives, which will be the case as long as they are not the first person in the queue. Thus the probability is

$$1 - \frac{1}{m+1} = \frac{m}{m+1}.$$

- (ii) By considering the first three people in the queue, show that the probability that I am able to sell one ticket to each person in the queue in the case  $n = 2$  and  $m \geq 2$  is  $\frac{m-1}{m+1}$ .

This time, I can sell to all the people as long as I have one £1 coin when the first £2 coin is given to me and I have received at least two £1 coins (in total) by the time the second £2 coin is offered.

So we consider the first three people in the queue and the coin they bring; in the table below, “any” means that either coin could be offered at this point. (This could also be represented as a tree diagram, of course.) The probabilities in black are those of success, the ones in red are for the cases of failure. Only one or the other of these needs to be calculated.

1st	2nd	3rd	Success?	Probability
£1	£1	any	yes	$\frac{m}{m+2} \times \frac{m-1}{m+1} = \binom{m}{2} / \binom{m+2}{2}$
£1	£2	£1	yes	$\frac{m}{m+2} \times \frac{2}{m+1} \times \frac{m-1}{m} = \binom{m-1}{1} / \binom{m+2}{2}$
£1	£2	£2	no	$\frac{m}{m+2} \times \frac{2}{m+1} \times \frac{1}{m} = 1 / \binom{m+2}{2}$
£2	any	any	no	$\frac{2}{m+2} = \binom{m+1}{1} / \binom{m+2}{2}$

To determine the probabilities in the table, there are two approaches. The first is to find the probability that the  $k$ th person brings the specified coin given the previous coins which have been brought; this is the most obvious method when this is drawn as a tree diagram. The second approach is to count the number of possible ways of arranging the remaining coins and to divide it by the total number of possible arrangements of the  $m+2$  coins, which is  $\binom{m+2}{2} = \frac{1}{2}(m+2)(m+1)$ .



STEP I 2011 Question 12 continued

Therefore the probability of success is

$$\frac{m(m-1)}{(m+2)(m+1)} + \frac{2(m-1)}{(m+2)(m+1)} = \frac{(m+2)(m-1)}{(m+2)(m+1)} = \frac{m-1}{m+1}.$$

Alternatively, we could calculate the probability of failure (adding up the probabilities in red) and subtract from 1 to get

$$1 - \frac{2}{(m+2)(m+1)} - \frac{2}{m+2} = 1 - \frac{2}{m+2} \cdot \frac{1+(m+1)}{m+2} = 1 - \frac{2}{m+2} = \frac{m-1}{m+2}.$$

(iii) Show that the probability that I am able to sell one ticket to each person in the queue in the case  $n = 3$  and  $m \geq 3$  is  $\frac{m-2}{m+1}$ .

This time, it turns out that we need to consider the first five people in the queue to distinguish the two cases which begin with £1, £1, £2, £2; the rest of the method is essentially the same as in part (ii).

1st	2nd	3rd	4th	5th	Success?	Probability
£1	£1	£1	any	any	yes	$\frac{m}{m+3} \times \frac{m-1}{m+2} \times \frac{m-2}{m+1} = \binom{m}{3} / \binom{m+3}{3}$
£1	£1	£2	£1	any	yes	$\frac{m}{m+3} \times \frac{m-1}{m+2} \times \frac{3}{m+1} \times \frac{m-2}{m}$ $= \binom{m-1}{2} / \binom{m+3}{3}$
£1	£1	£2	£2	£1	yes	$\frac{m}{m+3} \times \frac{m-1}{m+2} \times \frac{3}{m+1} \times \frac{2}{m} \times \frac{m-2}{m-1}$ $= \binom{m-2}{1} / \binom{m+3}{3}$
£1	£1	£2	£2	£2	no	$\frac{m}{m+3} \times \frac{m-1}{m+2} \times \frac{3}{m+1} \times \frac{2}{m} \times \frac{1}{m-1}$ $= 1 / \binom{m+3}{3}$
£1	£2	£1	£1	any	yes	$\frac{m}{m+3} \times \frac{3}{m+2} \times \frac{m-1}{m+1} \times \frac{m-2}{m}$ $= \binom{m-1}{2} / \binom{m+3}{3}$
£1	£2	£1	£2	£1	yes	$\frac{m}{m+3} \times \frac{3}{m+2} \times \frac{m-1}{m+1} \times \frac{2}{m} \times \frac{m-2}{m-1}$ $= \binom{m-2}{1} / \binom{m+3}{3}$
£1	£2	£1	£2	£2	no	$\frac{m}{m+3} \times \frac{3}{m+2} \times \frac{m-1}{m+1} \times \frac{2}{m} \times \frac{1}{m-1}$

STEP I 2011 Question 12 continued

$$= 1 / \binom{m+3}{3}$$

$$\begin{array}{cccccc} \pounds 1 & \pounds 2 & \pounds 2 & \text{any} & \text{any} & \text{no} & \frac{m}{m+3} \times \frac{3}{m+2} \times \frac{2}{m+1} = \binom{m}{1} / \binom{m+3}{3} \end{array}$$

$$\begin{array}{cccccc} \pounds 2 & \text{any} & \text{any} & \text{any} & \text{any} & \text{no} & \frac{3}{m+3} = \binom{m+2}{2} / \binom{m+3}{3} \end{array}$$

(Alternatively, the four cases beginning  $\pounds 1$ ,  $\pounds 2$  can be regarded as  $\pounds 1$ ,  $\pounds 2$  followed by 2 people with  $\pounds 2$  coins and  $m - 1$  people with  $\pounds 1$  coins, bringing us back into the case of part (ii). So the probability of success in these cases is  $\frac{m}{m+3} \times \frac{3}{m+2} \times \frac{m-2}{m}$ , where the final fraction comes from the result of part (ii).)

Therefore the probability of success is

$$\begin{aligned} & \frac{1}{(m+3)(m+2)(m+1)} (m(m-1)(m-2) + 3(m-1)(m-2) + \\ & \qquad \qquad \qquad 6(m-2) + 3(m-1)(m-2) + 6(m-2)) \\ &= \frac{m-2}{(m+3)(m+2)(m+1)} (m(m-1) + 6(m-1) + 12) \\ &= \frac{m-2}{(m+3)(m+2)(m+1)} (m^2 + 5m + 6) \\ &= \frac{m-2}{m+1}. \end{aligned}$$

Similarly, the probability of success can be calculated by considering the probability of failure: the probability of success is therefore

$$\begin{aligned} & 1 - \frac{6}{(m+3)(m+2)(m+1)} - \frac{6}{(m+3)(m+2)(m+1)} - \frac{6m}{(m+3)(m+2)(m+1)} - \frac{3}{m+3} \\ &= 1 - \frac{12 + 6m + 3(m+1)(m+2)}{(m+3)(m+2)(m+1)} \\ &= 1 - \frac{3m^2 + 15m + 18}{(m+3)(m+2)(m+1)} \\ &= 1 - \frac{3(m+2)(m+3)}{(m+3)(m+2)(m+1)} \\ &= 1 - \frac{3}{m+1} \\ &= \frac{m-2}{m+1}. \end{aligned}$$

*There seems to be a pattern in these results, and one might conjecture that the probability of being able to sell one ticket to each person in the general case  $m \geq n$  is  $\frac{m+1-n}{m+1}$ . This turns out to be correct, though the proof uses significantly different ideas from those used above.*

### Question 13

In this question, you may use without proof the following result:

$$\int \sqrt{4-x^2} \, dx = 2 \arcsin\left(\frac{1}{2}x\right) + \frac{1}{2}x\sqrt{4-x^2} + c.$$

A random variable  $X$  has probability density function  $f$  given by

$$f(x) = \begin{cases} 2k & -a \leq x < 0 \\ k\sqrt{4-x^2} & 0 \leq x \leq 2 \\ 0 & \text{otherwise,} \end{cases}$$

where  $k$  and  $a$  are positive constants.

(i) Find, in terms of  $a$ , the mean of  $X$ .

We know that  $\int_{-\infty}^{\infty} f(x) \, dx = 1$ , so we begin by performing this integration to determine  $k$ .

We have

$$\begin{aligned} \int_{-a}^0 2k \, dx + \int_0^2 k\sqrt{4-x^2} \, dx &= [2kx]_{-a}^0 + k\left[2 \arcsin \frac{x}{2} + \frac{1}{2}x\sqrt{4-x^2}\right]_0^2 \\ &= 2ak + k((2 \arcsin 1 + 0) - (2 \arcsin 0 + 0)) \\ &= 2ak + k\pi \\ &= k(2a + \pi) \\ &= 1, \end{aligned}$$

so  $k = 1/(2a + \pi)$ .

We can now work out the mean of  $X$ ; we work in terms of  $k$  until the very end to avoid ugly calculations. We can integrate the expression  $x\sqrt{4-x^2} = kx(4-x^2)^{\frac{1}{2}}$  either using inspection (as we do in the following) or the substitution  $u = 4-x^2$ , giving  $du/dx = -2x$ , so that the integral becomes  $k \int_4^0 -\frac{1}{2}u^{\frac{1}{2}} \, du = k\left[-\frac{1}{3}u^{\frac{3}{2}}\right]_4^0 = \frac{8}{3}k$ .

$$\begin{aligned} E(X) &= \int_{-\infty}^{\infty} xf(x) \, dx \\ &= \int_{-a}^0 2kx \, dx + \int_0^2 kx\sqrt{4-x^2} \, dx \\ &= [kx^2]_{-a}^0 + \left[-\frac{k}{3}(4-x^2)^{\frac{3}{2}}\right]_0^2 \\ &= (0 - ka^2) + (0 - (-\frac{k}{3} \times 4^{\frac{3}{2}})) \\ &= -ka^2 + \frac{8}{3}k \\ &= \frac{\frac{8}{3} - a^2}{2a + \pi} \\ &= \frac{8 - 3a^2}{3(2a + \pi)}. \end{aligned}$$

STEP I 2011 Question 13 continued

(ii) Let  $d$  be the value of  $X$  such that  $P(X > d) = \frac{1}{10}$ . Show that  $d < 0$  if  $2a > 9\pi$  and find an expression for  $d$  in terms of  $a$  in this case.

We have  $d < 0$  if and only if  $P(X > 0) < P(X > d) = \frac{1}{10}$ , so we consider  $P(X > 0)$ . Using the above integration (or noting that  $X$  is uniform for  $x < 0$ ), we have

$$\begin{aligned} P(X > 0) &= 1 - P(X < 0) \\ &= 1 - 2ak \\ &= 1 - \frac{2a}{2a + \pi} \\ &= \frac{\pi}{2a + \pi}. \end{aligned}$$

Therefore  $P(X > 0) < \frac{1}{10}$  if and only if

$$\frac{\pi}{2a + \pi} < \frac{1}{10};$$

that is  $10\pi < 2a + \pi$ , or  $2a > 9\pi$ . Putting these together gives  $d < 0$  if and only if  $2a > 9\pi$ .

In this case, as  $d < 0$ , we have

$$P(X > d) = 1 - P(X < d) = 1 - 2k(d - (-a)),$$

so  $1 - 2k(d + a) = \frac{1}{10}$ , so  $d + a = \frac{9}{10}/2k$ , giving

$$\begin{aligned} d &= \frac{9}{20k} - a \\ &= \frac{9(2a + \pi)}{20} - a \\ &= \frac{9\pi - 2a}{20}. \end{aligned}$$

Note that, since  $2a > 9\pi$ , this gives us  $d < 0$  as we expect.

An alternative approach is to calculate the cumulative distribution function first. We have

$$F(x) = \begin{cases} 0 & x < -a \\ 2k(x + a) & -a \leq x < 0 \\ k(2a + 2 \arcsin \frac{1}{2}x + \frac{1}{2}x\sqrt{4 - x^2}) & 0 \leq x \leq 2 \\ 1 & x > 2 \end{cases}$$

(though only the part with  $-a \leq x \leq 0$  is actually needed).

Then we solve  $F(d) = \frac{9}{10}$ . If it turns out that  $d < 0$ , then we have  $F(d) = 2k(d + a) = \frac{9}{10}$ , which rearranges to give  $d = (9\pi - 2a)/20$  as above. Now if  $2a > 9\pi$ , then  $(9\pi - 2a)/20 < 0$  so that  $F((9\pi - 2a)/20) = \frac{9}{10}$  and  $d < 0$ , as required.

STEP I 2011 Question 13 continued

(iii) Given that  $d = \sqrt{2}$ , find  $a$ .

We note that now  $d > 0$ , so we have to integrate to find  $a$  explicitly. We get

$$\begin{aligned}
 P(X > \sqrt{2}) &= \int_{\sqrt{2}}^2 k\sqrt{4-x^2} \, dx = \left[ 2 \arcsin \frac{x}{2} + \frac{1}{2}x\sqrt{4-x^2} \right]_{\sqrt{2}}^2 \\
 &= k \left( (2 \arcsin 1 + 0) - \left( 2 \arcsin \frac{\sqrt{2}}{2} + \frac{\sqrt{2}}{2}\sqrt{4-2} \right) \right) \\
 &= k \left( \pi - \frac{\pi}{2} - 1 \right) \\
 &= k \left( \frac{\pi}{2} - 1 \right) \\
 &= \frac{\frac{\pi}{2} - 1}{2a + \pi} \\
 &= \frac{1}{10}.
 \end{aligned}$$

Thus  $10\left(\frac{\pi}{2} - 1\right) = 2a + \pi$ , so that  $2a = 4\pi - 10$ , giving our desired result:  $a = 2\pi - 5$ .

Alternatively, one could calculate  $P(X < \sqrt{2})$  in the same manner and find  $a$  such that this equals  $\frac{9}{10}$ .

As a check, it is clear that  $2a = 4\pi - 10 < 9\pi$ , so  $d \geq 0$  from part (ii).

**Q1** (i) There are several routine features of a graph that one should look to consider on any curve-sketching question: key points, such as where the curve meets or cuts either of the coordinate axes, symmetries (and periodicities for trig. functions), asymptotes, and turning-points are the usual suspects. In this case, the given function involves square-roots as well, so the question of the domain of the function also comes into question. Considering all such things for  $y = \sqrt{1-x} + \sqrt{3+x}$  should help you realise the following:

- \* the RHS is only defined for  $-3 \leq x \leq 1$  (so the endpoints are at  $(-3, 2)$  and  $(1, 2)$ );
- \* the graph is symmetric in the line  $x = -1$ , with its maximum at  $(-1, 2\sqrt{2})$ ; NB it must be a maximum since  $2\sqrt{2} > 2$  so there is no need to resort to calculus to establish this;
- \* the curve is thus  $\cap$ -shaped, and the gradient at the endpoints is infinite. This last point wasn't of great concern for the purposes of the question, so its mention was neither rewarded nor its lack penalised: however, this is easily determined by realising that each term in the RHS is of the form  $X^{\frac{1}{2}}$ , so their derivatives will be of the form  $X^{-\frac{1}{2}}$  which, when evaluated at an endpoint will give one of them of the form  $\frac{1}{0}$  symptomatic of an asymptote.

A quick sketch of  $y = x + 1$  shows that there is only the one solution at  $x = 1$ .

(ii) Each side of this second equation represents an easily sketchable curve. Indeed, the RHS is essentially the same curve as in (i), but defined on the interval  $[-3, 3]$ . The LHS is merely a "horizontal" parabola, though only its upper half since the radix ( $\sqrt{\quad}$ ) sign denotes the *positive* square-root. These curves again intersect only the once, when  $x < 0$ . Resorting to algebra ... squaring, rearranging suitably and squaring again then yields a quadratic equation in  $x$  having one positive and one negative root.

**Q2** The required list of perfect cubes is 1, 8, 27, 64, 125, 216, 343, 512, 729, 1000, though there were no marks for noting them.

(i) In this question, it is clearly important to be able to factorise the sum of two cubes. So, in this first instance  $x + y = k$ ,  $(x + y)(x^2 - xy + y^2) = kz^3 \Rightarrow x^2 - (k - x)x + (k - x)^2 - z^3 = 0$ , which gives the required result upon rearrangement. One could either treat this as a quadratic in  $x$  and deal with its discriminant or go ahead directly to show that  $\frac{4z^3 - k^2}{3} = (y - x)^2 \geq 0$  which

immediately gives that  $\frac{4z^3 - k^2}{3}$  is a perfect square and also that  $z^3 \geq \frac{1}{4}k^2$ ; and the other half of

the required inequality comes either from  $z^3 = k^2 - 3xy < k^2$  (since  $x, y > 0$ ) or from noting that the smaller root of the quadratic in  $x$  is positive. Substituting  $k = 20$  into the given inequality then yields  $100 \leq z^3 < 400 \Rightarrow z = 5, 6, 7$ ; and the only value of  $z$  in this list for which  $\frac{4z^3 - k^2}{3}$  is a

perfect square is  $z = 7$ , which then yields the solution  $(x, y, z) = (1, 19, 7)$ . Although not a part of the question, we can now express 20 as a sum of two rational cubes in the following way:

$$20 = \left(\frac{1}{7}\right)^3 + \left(\frac{19}{7}\right)^3.$$

(ii) Although this second part of the question can be done in other ways, the intention is clearly that a similar methodology to (i)'s can be employed. Starting from

$$x + y = z^2, (x + y)(x^2 - xy + y^2) = kz.z^2 \Rightarrow x^2 - (z^2 - x)x + (z^2 - x)^2 - kz = 0$$

we find that  $\frac{4kz - z^4}{3}$  is a perfect square, and also that  $k < z^3 \leq 4k$ . With  $k = 19$ ,  $19 < z^3 \leq 76$

$\Rightarrow z = 3$  or  $4$ . This time, each of these values of  $z$  gives  $\frac{z(76 - z^3)}{3}$  a perfect square, yielding the two solutions  $(x, y, z) = (1, 8, 3)$  and  $(6, 10, 4)$ . Thus we have two ways to represent 19 as a sum of two rational cubes:  $19 = \left(\frac{1}{3}\right)^3 + \left(\frac{8}{3}\right)^3$  and  $\left(\frac{3}{2}\right)^3 + \left(\frac{5}{2}\right)^3$ .

Purely as an aside, interested students may like to explore other possibilities for  $x^3 + y^3 = kz^3$ . One that never made it into the question was

$$x + y = kz, (x + y)(x^2 - xy + y^2) = kz \cdot z^2 \Rightarrow x^2 - (kz - x)x + (kz - x)^2 - z^2 = 0$$

$$\Rightarrow 3x^2 - 3kzx + z^2(k^2 - 1) = 0. \text{ Then } x = \frac{3kz \pm \sqrt{9k^2 z^2 - 12z^2(k^2 - 1)}}{6} = \frac{1}{6}z \left\{ 3k \pm \sqrt{12 - 3k^2} \right\},$$

requiring  $12 - 3k^2 \geq 0$  i.e.  $k^2 \leq 4 \Rightarrow k = 1$  or  $2$ .

When  $k = 1$ :  $x^3 + y^3 = z^3$  has NO solutions by *Fermat's Last Theorem*;

and when  $k = 2$ :  $x^3 + y^3 = 2z^3$  has (trivially) infinitely many solutions  $x = y = z$ .

**Q3** This question is all about increasing functions and what can be deduced from them. It involves inequalities, which are never popular creatures even amongst STEP candidates. Fortunately, you are led fairly gently by the hand into what to do, at least to begin with.

(i) (a)  $f'(x) = \cos x - \{x \cdot (-\sin x) + \cos x\} = x \sin x \geq 0$  for  $x \in [0, \frac{1}{2}\pi]$ , and since  $f(0) = 0$  it follows that  $f(x) = \sin x - x \cos x \geq 0$  for  $0 \leq x \leq \frac{1}{2}\pi$ .

(i) (b) A key observation here is that the "1" is simply a disguise for  $\frac{d}{dx}(x)$ , so you are actually being given that  $\frac{d}{dx}(\arcsin x) \geq \frac{d}{dx}(x)$  in the given interval; in other words, that  $f(x) = \arcsin x - x$  is an increasing function. Since  $f(0) = 0$  and  $f$  increasing,  $f(x) = \arcsin x - x \geq 0$  for  $0 \leq x < 1$ , and the required result follows.

(i) (c) Writing  $g(x) = \frac{x}{\sin x} \Rightarrow g'(x) = \frac{\sin x - x \cos x}{\sin^2 x} > 0$  for  $0 < x < \frac{1}{2}\pi$  using (a)'s result.

Now, it may help to write  $u = \arcsin x$ , just so that it looks simpler to deal with here. Then  $u \geq x$  by (b)'s result  $\Rightarrow g(u) \geq g(x)$  since  $g'(x) \geq 0$  and the required result again follows.

(ii) There is a bit more work to be done here, but essentially the idea is the same as that in part (i), only the direction of the inequality seems to be reversed, so care must be taken. An added difficulty also arises in that we find that we must show that  $f' \geq 0$  by showing that it is increasing from zero. So  $g(x) = \frac{\tan x}{x}$ ,  $g'(x) = \frac{x \sec^2 x - \tan x}{x^2} = \frac{2x - \sin 2x}{2x^2 \cos^2 x}$ . Examining  $f(x) = 2x - \sin 2x$

(since the denominator is clearly positive in the required interval):  $f(0) = 0$  and  $f'(x) = 2 - 2\cos 2x \geq 0$  for  $0 < x < \frac{1}{2}\pi \Rightarrow f \geq 0 \Rightarrow g'(x) \geq 0 \Rightarrow g$  increasing. Mimicking the conclusion of (i) (c), the reader should now be able to complete the solution.

- Q4** (i) Using  $\sin A = \cos(90^\circ - A)$  gives  $\theta = 360n \pm (90^\circ - 4\theta)$  – Note that you certainly should be aware of the periodicities of the basic trig. functions  $\Rightarrow 5\theta = 360n + 90^\circ$  or  $3\theta = 360n + 90^\circ$ . These give either  $\theta = 72n + 18^\circ \Rightarrow \theta = 18^\circ, 90^\circ, 162^\circ$  or  $\theta = 120n + 30^\circ \Rightarrow \theta = 30^\circ, 150^\circ$ .

Now using the double-angle formulae for sine (twice) and cosine, we have  $c = 2.2sc.(1 - 2s^2)$ . We can discount  $c = 0$  for  $\theta = 18^\circ$ , so that  $1 = 4s(1 - 2s^2)$  which gives the cubic equation in  $s = \sin\theta$ ,  $8s^3 - 4s + 1 = 0 \Rightarrow (2s - 1)(4s^2 + 2s - 1) = 0$ . Again, we can discount  $c = \frac{1}{2}$  for  $\theta = 18^\circ$  which leaves us with  $\sin 18^\circ$  the positive root (as  $18^\circ$  is acute) from the two possible solutions of this quadratic; namely,  $\sin 18^\circ = \frac{\sqrt{5} - 1}{4}$ .

(ii) Using the double-angle formula for sine, we have  $4s^2 + 1 = 16s^2(1 - s^2) \Rightarrow 0 = 16s^4 - 12s^2 + 1 \Rightarrow s^2 = \frac{12 \pm \sqrt{80}}{32} = \frac{3 \pm \sqrt{5}}{8}$ . At first, this may look like a problem, but bear in mind that we want

it to be a perfect square. Proceeding with this in mind,  $s^2 = \frac{6 \pm 2\sqrt{5}}{16} = \left(\frac{\sqrt{5} \pm 1}{4}\right)^2$  so that we have

the four answers,  $\sin x = \pm \left(\frac{\sqrt{5} \pm 1}{4}\right)$ .

(iii) To make the connection between this part and the previous one requires nothing more than division by 4 to get  $\sin^2 x + \frac{1}{4} = \sin^2 2x$ , and the solution  $x = 3\alpha = 18^\circ, 5\alpha = 30^\circ \Rightarrow \alpha = 6^\circ$  immediately presents itself from part (ii). However, in order to **deduce** a second solution (noting that  $\alpha = 45^\circ$  is easily seen to satisfy the given equation), it is important to be prepared to be a bit flexible and use your imagination. The other possible angles that are “related” to  $18^\circ$  and might satisfy (ii)’s equation, can be looked-for, provided that  $\sin 5\alpha = \pm \frac{1}{2}$  (and there are many possibilities here also). A little searching and/or thought reveals

$\sin x = -\left(\frac{\sqrt{5} - 1}{4}\right) \Rightarrow 3\alpha = 180^\circ + 18^\circ = 198^\circ$  also works, since  $5\alpha = 330^\circ$  has  $\sin 5\alpha = -\frac{1}{2}$ , and the second acute answer is  $\alpha = 66^\circ$ .

- Q5** The simplest way to do this is to realise that  $OA$  is the bisector of  $\angle BOC$ , so that  $A$  is on the diagonal  $OA'$  of parallelogram  $OBA'C$  (in fact, since  $OB = OC$ , it is a rhombus)  $\Rightarrow \mathbf{b} + \mathbf{c} = \lambda \mathbf{a}$  for some  $\lambda$  (giving the first part of the result). Also, as  $BC$  is perpendicular to  $OA$ ,  $(\mathbf{b} - \mathbf{c}) \cdot \mathbf{a} = 0 \Rightarrow (2\mathbf{b} - \lambda \mathbf{a}) \cdot \mathbf{a} = 0 \Rightarrow \lambda = 2\left(\frac{\mathbf{a} \cdot \mathbf{b}}{\mathbf{a} \cdot \mathbf{a}}\right)$ .

Similarly (replacing  $\mathbf{a}$  by  $\mathbf{b}$  and  $\mathbf{b}$  by  $\mathbf{c}$  in the above), we have  $\mathbf{d} = k\mathbf{b} - \mathbf{c}$  where  $k = 2\left(\frac{\mathbf{b} \cdot \mathbf{c}}{\mathbf{b} \cdot \mathbf{b}}\right)$   
 $= 2\left(\frac{\mathbf{b} \cdot \lambda \mathbf{a} - \mathbf{b} \cdot \mathbf{b}}{\mathbf{b} \cdot \mathbf{b}}\right) = 2\lambda\left(\frac{\mathbf{a} \cdot \mathbf{b}}{\mathbf{b} \cdot \mathbf{b}}\right) - 2 \Rightarrow \mathbf{d} = \left(2\lambda\left(\frac{\mathbf{a} \cdot \mathbf{b}}{\mathbf{b} \cdot \mathbf{b}}\right) - 2\right)\mathbf{b} - (\lambda \mathbf{a} - \mathbf{b}) = \mu \mathbf{b} - \lambda \mathbf{a}$  where  
 $\mu = 2\lambda\left(\frac{\mathbf{a} \cdot \mathbf{b}}{\mathbf{b} \cdot \mathbf{b}}\right) - 1$  or  $4\left(\frac{[\mathbf{a} \cdot \mathbf{b}]^2}{[\mathbf{a} \cdot \mathbf{a}][\mathbf{b} \cdot \mathbf{b}]}\right) - 1$ .

Now  $A, B$  and  $D$  are collinear if and only if  $\overrightarrow{AD} = \mu \mathbf{b} - (\lambda + 1)\mathbf{a}$  is a multiple of  $\overrightarrow{AB} = \mathbf{b} - \mathbf{a}$   
 $\Leftrightarrow t(\mathbf{b} - \mathbf{a}) = \mu \mathbf{b} - (\lambda + 1)\mathbf{a}$  for some  $t (\neq 0)$ .



Comparing coefficients of  $\mathbf{a}$  and  $\mathbf{b}$  then gives ( $t =$ )  $\mu = \lambda + 1$ .

In the case when  $\lambda = -\frac{1}{2}$ ,  $\mu = \frac{1}{2}$  and  $D$  is the midpoint of  $AB$ .

Finally,  $\mu = \frac{1}{2} \Rightarrow \frac{1}{2} = 4 \left( \frac{[\mathbf{a} \cdot \mathbf{b}]^2}{[\mathbf{a} \cdot \mathbf{a}][\mathbf{b} \cdot \mathbf{b}]} \right) - 1 = 4 \left( \frac{\mathbf{a} \cdot \mathbf{b}}{ab} \right)^2 - 1$ , and using the scalar product formula

$\cos \theta = \frac{\mathbf{a} \cdot \mathbf{b}}{ab}$  gives  $\cos \theta = -\sqrt{\frac{3}{8}}$ . [Note that  $\mathbf{a} \cdot \mathbf{b}$  has the same sign as  $\lambda$ .]

---

**Q6** To begin with, it is essential to realise that the integrand of  $I = \int [f'(x)]^2 [f(x)]^n dx$  must have its two components split up suitably so that integration by parts can be employed. Thus

$$I = \int [f'(x)] \times \left\{ [f'(x)] [f(x)]^n \right\} dx = f'(x) \times \frac{1}{n+1} [f(x)]^{n+1} - \int \left( [f''(x)] \times \frac{1}{n+1} [f(x)]^{n+1} \right) dx.$$

Now (and not earlier) is the opportune moment to use the given relationship  $f''(x) = kf(x)f'(x)$ ,

so that  $I = f'(x) \times \frac{1}{n+1} [f(x)]^{n+1} - \int \left( kf'(x) \times \frac{1}{n+1} [f(x)]^{n+2} \right) dx$ , which is now directly integrable

as  $f'(x) \times \frac{1}{n+1} [f(x)]^{n+1} - \frac{1}{(n+1)(n+3)} \times k [f(x)]^{n+3} (+ C)$ .

(i) For  $f(x) = \tan x$ ,  $f'(x) = \sec^2 x$  and  $f''(x) = 2 \sec^2 x \tan x = kf(x)f'(x)$  with  $k = 2$ .

Also, differentiating  $I = \frac{\sec^2 x \tan^{n+1} x}{n+1} - \frac{2 \tan^{n+3} x}{(n+1)(n+3)}$  gives

$$\begin{aligned} \frac{dI}{dx} &= \frac{1}{n+1} (\sec^2 x \cdot (n+1) \tan^n x \cdot \sec^2 x + 2 \sec x \cdot \sec x \tan x \cdot \tan^{n+1} x) \\ &\quad - \frac{1}{(n+1)(n+3)} (2(n+3) \tan^{n+2} x \cdot \sec^2 x) = \sec^4 x \tan^n x = (f'(x))^2 \times (f(x))^n \text{ as required,} \end{aligned}$$

although this could be verified in reverse using integration. Using this result directly in the first given integral is now relatively straightforward:

$$\int \frac{\sin^4 x}{\cos^8 x} dx = \int \sec^4 x \tan^4 x dx = \frac{\sec^2 x \tan^5 x}{5} - \frac{2 \tan^7 x}{35} + C.$$

(ii) Hopefully, all this differentiating of sec and tan functions may have helped you identify the right sort of area to be searching for ideas with the second of the given integrals.

If  $f(x) = \sec x + \tan x$ ,  $f'(x) = \sec x \tan x + \sec^2 x = \sec x(\sec x + \tan x)$

$$\begin{aligned} \text{and } f''(x) &= \sec^2 x(\sec x + \tan x) + \sec x \tan x(\sec x + \tan x) \\ &= \sec x(\sec x + \tan x)^2 = kf(x)f'(x) \text{ with } k = 1. \end{aligned}$$

Then  $\int \sec^2 x(\sec x + \tan x)^6 dx = \int \{ \sec x(\sec x + \tan x) \}^2 \times (\sec x + \tan x)^4 dx$   
 $= \frac{\sec x(\sec x + \tan x)^6}{5} - \frac{(\sec x + \tan x)^7}{35} + C$

---

**Q7** (i) Once you have split each series into sums of powers of  $\lambda$  and  $\mu$  separately, it becomes clear that you are merely dealing with GPs. Thus  $\sum_{r=0}^n b_r = (1 + \lambda + \lambda^2 + \dots + \lambda^n) - (1 + \mu + \mu^2 + \dots + \mu^n)$   
 $= \frac{\lambda^{n+1} - 1}{\lambda - 1} - \frac{\mu^{n+1} - 1}{\mu - 1} = \frac{1}{\sqrt{2}}(\lambda^{n+1} - 1 + \mu^{n+1} - 1)$ , since  $\lambda - 1 = \sqrt{2}$  and  $\mu - 1 = -\sqrt{2}$   
 $= \frac{1}{\sqrt{2}}a_{n+1} - \sqrt{2}$  and, similarly,  $\sum_{r=0}^n a_r = \frac{\lambda^{n+1} - 1}{\sqrt{2}} - \frac{\mu^{n+1} - 1}{\sqrt{2}} = \frac{1}{\sqrt{2}}b_{n+1}$ .

(ii) There is no need to be frightened by the appearance of the nested sums here as the ‘inner sum’ has already been computed: all that is left is to work with the remaining ‘outer sum’ and deal carefully with the limits:  $\sum_{m=0}^{2n} \left( \sum_{r=0}^m a_r \right) = \sum_{m=0}^{2n} \left( \frac{1}{\sqrt{2}}b_{m+1} \right) = \frac{1}{\sqrt{2}} \sum_{m=0}^{2n+1} b_m$  (since  $b_0 = 0$ )

$$= \frac{1}{\sqrt{2}} \left( \frac{1}{\sqrt{2}}a_{2n+2} - \sqrt{2} \right) = \frac{1}{2}(\lambda^{2n+2} + \mu^{2n+2} - 2) = \frac{1}{2}([\lambda^{n+1}]^2 - 2[\lambda\mu]^{n+1} + [\mu^{n+1}]^2)$$
 since  $\lambda\mu = -1$

and  $n + 1$  is even when  $n$  is odd  $= \frac{1}{2}(b_{n+1})^2$  when  $n$  is odd. However, when  $n$  is even,  $n + 1$  is odd

$$\text{and } \sum_{m=0}^{2n} \left( \sum_{r=0}^m a_r \right) = \frac{1}{2}(b_{n+1})^2 - 2 \text{ or } \frac{1}{2}(a_{n+1})^2.$$

(iii) We already have the result  $\left( \sum_{r=0}^n a_r \right)^2 = \frac{1}{2}(b_{n+1})^2$ , so the only new thing is

$$\sum_{r=0}^n a_{2r+1} = (\lambda + \lambda^3 + \lambda^5 + \dots + \lambda^{2n+1}) + (\mu + \mu^3 + \mu^5 + \dots + \mu^{2n+1}), \text{ which is still the sum of two}$$

GPs, merely with different common ratios, having sum  $\frac{\lambda(\lambda^{2n+2} - 1)}{\lambda^2 - 1} + \frac{\mu(\mu^{2n+2} - 1)}{\mu^2 - 1}$ .

$$\text{Now } \lambda^2 - 1 = 3 + 2\sqrt{2} - 1 = 2(1 + \sqrt{2}) = 2\lambda \quad \text{and} \quad \mu^2 - 1 = 3 - 2\sqrt{2} - 1 = 2(1 - \sqrt{2}) = 2\mu,$$

$$\text{so } \sum_{r=0}^n a_{2r+1} = \frac{1}{2}(\lambda^{2n+2} + \mu^{2n+2} - 2) = \frac{1}{2}(b_{n+1})^2 \text{ when } n \text{ is odd, and } \frac{1}{2}(b_{n+1})^2 - 2 \text{ when } n \text{ is even.}$$

$$\text{Thus } \left( \sum_{r=0}^n a_r \right)^2 - \sum_{r=0}^n a_{2r+1} = 0 \text{ when } n \text{ is odd } \neq 2 \text{ when } n \text{ is even.}$$

**Q8** The string leaves the circle at  $C(-\cos\theta, \sin\theta)$ .

Since the radius of the circle is 1, Arc  $AC = \pi - t = \theta$  (so  $\cos\theta = -\cos t$  and  $\sin\theta = \sin t$ ).

Then  $B = (-\cos\theta + t \sin\theta, \sin\theta + t \cos\theta) = (\cos t + t \sin t, \sin t - t \cos t)$ .

$$\frac{dx}{dt} = -\sin t + t \cos t + \sin t = t \cos t \text{ by the Product Rule; } = 0 \text{ when } t = 0, (x, y) = (1, 0) \text{ or}$$

$$t = \frac{1}{2}\pi, (x, y) = \left(\frac{1}{2}\pi, 1\right). \text{ This is } x_{\max} \text{ so } t_0 = \frac{1}{2}\pi.$$

The required area under the curve and above the  $x$ -axis is

$$A = \int_{\pi}^{\frac{1}{2}\pi} y \frac{dx}{dt} dt = \int_{\pi}^{\frac{1}{2}\pi} (\sin t - t \cos t) t \cos t dt = \int_{\frac{1}{2}\pi}^{\pi} -\frac{1}{2}t \sin 2t dt + \int_{\frac{1}{2}\pi}^{\pi} \frac{1}{2}t^2 (1 + \cos 2t) dt$$

using the double-angle formulae for sine and cosine. As the integration here may get very messy, it is almost certainly best to evaluate this area as the sum of three separate integrals:

$$\int_{\frac{1}{2}\pi}^{\pi} -\frac{1}{2}t \sin 2t \, dt = \left[ \frac{1}{4}t \cos 2t \right]_{\frac{1}{2}\pi}^{\pi} - \int_{\frac{1}{2}\pi}^{\pi} \frac{1}{4} \cos 2t \, dt = \left[ \frac{1}{4}t \cos 2t + \frac{1}{8} \sin 2t \right]_{\frac{1}{2}\pi}^{\pi} = \frac{3\pi}{8};$$

$$\int_{\frac{1}{2}\pi}^{\pi} \frac{1}{2}t^2 \, dt = \left[ \frac{1}{6}t^3 \right]_{\frac{1}{2}\pi}^{\pi} = \frac{7\pi^3}{48}$$

$$\text{and } \int_{\frac{1}{2}\pi}^{\pi} \frac{1}{2}t^2 \cos 2t \, dt = \left[ \frac{1}{4}t^2 \sin 2t \right]_{\frac{1}{2}\pi}^{\pi} - \int_{\frac{1}{2}\pi}^{\pi} \frac{1}{2}t \sin 2t \, dt = 0 - \left( -\frac{3\pi}{8} \right) = \frac{3\pi}{8} \text{ using a previous answer.}$$

$$\text{Thus } A = \frac{7\pi^3}{48} + \frac{3\pi}{4}.$$

For the total area swept out by the string during this process (called *Involution*), we still need to add in the area swept out between  $t = 0$  and  $t = \frac{1}{2}\pi$ , which is  $-\frac{\pi^3}{48} + \frac{\pi}{4}$  (there is, of course, no need to repeat the integration process), and then subtract the area inside the semi-circle. Thus the total area swept out by the string is  $\frac{7\pi^3}{48} + \frac{3\pi}{4} + \left( -\frac{\pi^3}{48} + \frac{\pi}{4} \right) - \frac{\pi}{2}$  (area inside semi-circle)  $= \frac{\pi^3}{6}$ .

**Q9** Collisions questions are always popular, as there are only two or three principles which are to be applied. It is, nonetheless, good practice to say what you are attempting to do. Also, a diagram, though not an essential requirement, is almost always a good idea, if only since it enables you to specify a direction which you are going to take to be the positive one, especially since velocity and momentum are vector quantities. Once these preliminaries have been set up, the rest is fairly easy. By *CLM*,  $3mu = 2mV_A + mV_B$  and *NEL/NLR* gives  $e.3u = V_B - V_A$ . Solving these simultaneously for  $V_A$  and  $V_B$  yields  $V_A = u(1 - e)$  and  $V_B = u(1 + 2e)$ .

Next, after its collision with the wall,  $B$  has speed  $|fV_B|$  away from the wall.

For the second collision of  $A$  and  $B$ , by *CLM* (away from wall),  $fmV_B - 2mV_A = 2mW_A - mW_B$ , and *NEL/NLR* gives  $W_A + W_B = e(V_A + fV_B)$ . Subst<sup>g</sup>. for  $V_A$  &  $V_B$  from before in *both* of these equations  $\Rightarrow 2W_A - W_B = u\{f(1 + 2e) - 2(1 - e)\}$  and  $W_A + W_B = eu\{(1 - e) + f(1 + 2e)\}$ . Solving these simultaneously for  $W_A$  (not wanted) and  $W_B$  then gives  $W_B = \frac{1}{3}u\{2(1 - e^2) - f(1 - 4e^2)\}$ , as required.

Noting that  $1 - 4e^2$  can be negative, zero, or positive, it may be best (though not essential) to consider the possible cases separately:

$$\text{if } e = \frac{1}{2}, W_B = \frac{1}{3}u\left\{2\left(\frac{3}{4}\right) - f(0)\right\} = \frac{1}{2}u > 0;$$

$$\text{if } \frac{1}{2} < e < 1, W_B = \frac{1}{3}u\{2(1 - e^2) + f(4e^2 - 1)\} > 0 \text{ for all } e, f \text{ since each term in the bracket is } > 0;$$

$$\text{if } 0 < e < \frac{1}{2}, 1 - e^2 > \frac{3}{4} \text{ and } W_B > \frac{1}{3}u\left\{\frac{3}{2} - f(1 - 4e^2)\right\} > \frac{1}{3}u\left\{\frac{3}{2} - 1 \times 1\right\} > 0.$$

**Q10** The maximum height of a projectile is when  $\dot{y} = u \sin \theta - gt = 0 \Rightarrow t = \frac{u \sin \theta}{g}$ . Substituting this into  $y = ut \sin \theta - \frac{1}{2}gt^2 \Rightarrow H = \frac{u^2 \sin^2 \theta}{2g}$  (although some people learn it to quote).

When the string goes taut, its length  $l$  is given by  $l = \frac{1}{2}H = \frac{u^2 \sin^2 \theta}{4g}$ . But  $l$  is also given from the y-component of  $P$ 's displacement as  $l = ut \sin \theta - \frac{1}{2}gt^2$ , which gives the quadratic equation  $gt^2 - (2u \sin \theta)t + H = 0$  in  $t$ . Solving by the quadratic formula,  $t = \frac{2u \sin \theta \pm \sqrt{4u^2 \sin^2 \theta - 4gH}}{2g}$   
 $= \frac{2\sqrt{2gH} \pm \sqrt{8gH - 4gH}}{2g} = \frac{1}{g}(\sqrt{2gH} \pm \sqrt{gH}) = \sqrt{\frac{H}{g}}(\sqrt{2} - 1)$ , where we take the smaller of the two roots since we want the first time when an unimpeded  $P$  is at this height.

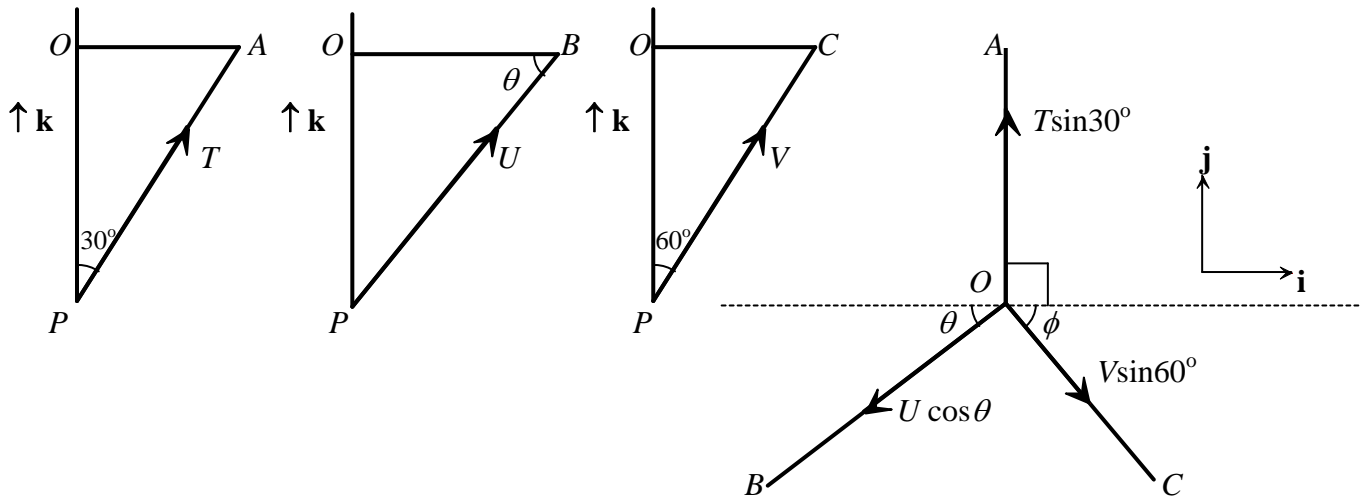
At this time,  $P$ 's vertical velocity is  $v = \dot{y} = u \sin \theta - g\sqrt{\frac{H}{g}}(\sqrt{2} - 1) = \sqrt{2gH} - \sqrt{gH}(\sqrt{2} - 1)$   
 $= \sqrt{gH}$  or  $\frac{u \sin \theta}{\sqrt{2}}$ . Thus, the common speed of  $P/R$  after the string goes taut, by *CLM*, is  $\frac{1}{2}\sqrt{gH}$   
or  $\frac{u \sin \theta}{2\sqrt{2}}$ .

When the string goes slack, we must consider the projectile motion of  $R$ , which has initial velocity components  $u \cos \theta \rightarrow$  and  $\frac{u \sin \theta}{2\sqrt{2}} \uparrow$ . [Note that both  $P$  and  $R$  move in this way, so  $P$  no longer interferes with  $R$ 's motion.]  $R$ 's vertical displacement is zero when  $y_R = \frac{u \sin \theta}{2\sqrt{2}}t - \frac{g}{2}t^2 = 0$  ( $t \neq 0$ )  
 $\Rightarrow t = \frac{u \sin \theta}{g\sqrt{2}}$  (and this is the extra time after the string has gone slack). The total distance travelled by  $R$  is thus  $D = x_1 + x_2$ , where  $x_1 = u \cos \theta \frac{u \sin \theta}{g\sqrt{2}}(\sqrt{2} - 1)$  and  $x_2 = u \cos \theta \frac{u \sin \theta}{g\sqrt{2}}$   
 $= \frac{u^2 \sin \theta \cos \theta}{g}$ .

Finally, setting  $D = H \Rightarrow \tan \theta = 2$ .

---

**Q11** (i) The saying goes that “a picture paints a thousand words” and tis is especially true in mechanics questions, if for no better reason than it gives the solver a clear indication of angles/directions for – in this case – the forces involved. The relevant diagrams are as follows:



It might also be wise to note the sines and cosines of the given angles:  $\tan \theta = \sqrt{2} \Rightarrow \sin \theta = \frac{\sqrt{2}}{\sqrt{3}}$

and  $\cos \theta = \frac{1}{\sqrt{3}}$ , and  $\tan \phi = \frac{\sqrt{2}}{4} \Rightarrow \sin \phi = \frac{1}{3}$  and  $\cos \phi = \frac{2\sqrt{2}}{3}$ . Having noted these carefully, it is now reasonably straightforward to state that the vector in the direction of PB is

$$-(U \cos \theta) \cos \theta \mathbf{i} - (U \cos \theta) \sin \theta \mathbf{j} + U \sin \theta \mathbf{k} = -\frac{1}{3} \mathbf{i} - \frac{\sqrt{2}}{3} \mathbf{j} + \frac{\sqrt{2}}{\sqrt{3}} \mathbf{k}.$$

Note that the question requires you to verify that this vector has magnitude 1.

(ii) The forces involved are now readily written down ...

$$\underline{\mathbf{T}}_B = \left( -\frac{1}{3} \mathbf{i} - \frac{\sqrt{2}}{3} \mathbf{j} + \frac{\sqrt{2}}{\sqrt{3}} \mathbf{k} \right) U \text{ follows from (i)'s answer. Also,}$$

$$\underline{\mathbf{T}}_A = T \sin 30^\circ \mathbf{j} + T \cos 30^\circ \mathbf{k} = \frac{1}{2} T (\mathbf{j} + \sqrt{3} \mathbf{k}),$$

$$\underline{\mathbf{T}}_C = V \sin 60^\circ \cos \phi \mathbf{i} - V \sin 60^\circ \sin \phi \mathbf{j} + V \cos 60^\circ \mathbf{k} = \frac{1}{2} V \left( \frac{2\sqrt{2}}{\sqrt{3}} \mathbf{i} - \frac{1}{\sqrt{3}} \mathbf{j} + \mathbf{k} \right)$$

and  $\underline{\mathbf{W}} = -W \mathbf{k}$ .

(iii) Having set the system up in vector form, the fundamental Statics principle involved is that

$$\underline{\mathbf{T}}_A + \underline{\mathbf{T}}_B + \underline{\mathbf{T}}_C + \underline{\mathbf{W}} = \mathbf{0}.$$

Comparing components in this vector equation gives

$$\text{(i)} \quad 0 - \frac{1}{3} U + \frac{\sqrt{6}}{3} V = 0 \Rightarrow U = V \sqrt{6}$$

$$\text{(j)} \quad \frac{1}{2} T - \frac{\sqrt{2}}{3} U - \frac{\sqrt{3}}{6} V = 0 \Rightarrow (\text{using } U = V \sqrt{6}) \quad T = \frac{5\sqrt{3}}{3} V$$

$$\text{(k)} \quad \frac{\sqrt{3}}{2} T + \frac{\sqrt{6}}{3} U + \frac{1}{2} V = W \Rightarrow (\text{using } U = V \sqrt{6} \text{ and } T = \frac{5\sqrt{3}}{3} V)$$

$$T = \frac{W\sqrt{3}}{3}, \quad U = \frac{W\sqrt{6}}{5}, \quad V = \frac{W}{5}.$$

**Q12** It is important in these sorts of contrived games to read the rules properly: in this case, you must ensure that you are clear what is meant by ‘match’, ‘game’ and ‘point’. Then, a careful listing of cases is all that is required.

$$(i) P(\text{re-match}) = P(XYX) + P(YXY) = p(1-p)^2 + (1-p)^3 = (1-p)^2.$$

$$P(Y \text{ wins directly}) = P(YY) + P(XYY) = (1-p)p + p(1-p)p = p(1-p)(1+p) \text{ or } p(1-p^2).$$

Thus,  $P(Y \text{ wins}) = w = p(1-p^2) + w(1-p)^2$ , and you will note the way starting the match again leads to a recurrent way of describing  $Y$ 's chances of winning. Re-arranging this then gives

$$w = \frac{p(1-p^2)}{1-(1-p)^2} = \frac{p(1-p^2)}{(1-(1-p))(1+(1-p))} = \frac{p(1-p^2)}{p(2-p)} = \frac{1-p^2}{2-p} \text{ for } p \neq 0.$$

Next,  $w - \frac{1}{2} = \frac{2(1-p^2) - (2-p)}{2(2-p)} = \frac{p(1-2p)}{2(2-p)}$ , and since  $2-p > 0$ ,  $w - \frac{1}{2}$  has the same sign as  $1-2p$  and hence as  $\frac{1}{2} - p$ . Hence,  $w > \frac{1}{2}$  if  $p < \frac{1}{2}$  and  $w < \frac{1}{2}$  if  $p > \frac{1}{2}$ .

To be fair at this point, the final demand of part (i) ended up being rather less demanding than was originally intended, as the answer is either ‘‘Yes’’ or ‘‘No’’ ... though you would of course, be expected to support your decision; no marks are given for being a lucky guesser! The following calculus approach is thus slightly unnecessary, as one can simply provide an example to show that  $w$  can decrease with  $p$ . The following, more detailed analysis had been intended.

$$\frac{dw}{dp} = \frac{(2-p)(-2p) - (1-p^2)(-1)}{(2-p)^2} = \frac{1}{(2-p)^2} (p^2 - 4p + 1) = \frac{1}{(2-p)^2} ([2-p]^2 - 3).$$

Then  $\frac{dw}{dp} > 0$  for  $0 < p < 2 - \sqrt{3}$  and  $\frac{dw}{dp} < 0$  for  $2 - \sqrt{3} < p \leq 1$ .

For a fair game,  $Y$ 's expectation should be 0. Thus, using  $E(\text{gain}) = \sum g_i \times P(g_i)$ , where  $g_i$  is the ‘‘gain function’’ for  $Y$ , with  $w = \frac{5}{12}$  when  $p = \frac{2}{3}$ , we have  $0 = (k) \times \frac{5}{12} + (-1) \times \frac{7}{12} \Rightarrow k = 1.4$ .

When  $p = 0$ , the results run  $YXY \dots$  re-match ...  $YXY \dots$  re-match ... and the match never ends.

**Q13** Firstly, *skewness* is a measure of a distribution's **lack** of symmetry.

(i) For the next part, you should understand how the ‘‘expectation’’ function behaves.

$$\begin{aligned} E[(X - \mu)^3] &= E[X^3 - 3\mu X^2 + 3\mu^2 X - \mu^3] = E[X^3] - 3\mu E[X^2] + 3\mu^2 E[X] - \mu^3 \\ &= E[X^3] - 3\mu(\sigma^2 + \mu^2) + 3\mu^2 \cdot \mu - \mu^3 \text{ using } E[X] = \mu \text{ and } E[X^2] = \sigma^2 + \mu^2 \\ &= E[X^3] - 3\mu\sigma^2 - \mu^3, \text{ as required.} \end{aligned}$$

For a given distribution, this next bit of work is very routine indeed.

$$E[X] = \int_0^1 2x^2 dx = \left[ \frac{2}{3} x^3 \right]_0^1 = \frac{2}{3} = \mu; \quad E[X^2] = \int_0^1 2x^3 dx = \left[ \frac{1}{2} x^4 \right]_0^1 = \frac{1}{2} \Rightarrow \sigma^2 = \frac{1}{18}; \text{ and}$$

$$E[X^3] = \int_0^1 2x^4 dx = \left[ \frac{2}{5} x^5 \right]_0^1 = \frac{2}{5}; \text{ all of which then lead to } \gamma = \frac{\frac{2}{5} - 3 \cdot \frac{2}{3} \cdot \frac{1}{18} - \frac{8}{27}}{\frac{1}{18\sqrt{18}}} = -\frac{2\sqrt{2}}{5} \text{ when}$$

substituted into the given (previously deduced) formula.

(ii) Here,  $F(x) = \int_0^x 2x \, dx = x^2$  ( $0 \leq x \leq 1$ )  $\Rightarrow F^{-1}(x) = \sqrt{x}$  ( $0 \leq x \leq 1$ )

$$\Rightarrow D = \frac{F^{-1}\left(\frac{9}{10}\right) - 2F^{-1}\left(\frac{1}{2}\right) + F^{-1}\left(\frac{1}{10}\right)}{F^{-1}\left(\frac{9}{10}\right) - F^{-1}\left(\frac{1}{10}\right)} = \frac{\frac{3}{\sqrt{10}} - \frac{2}{\sqrt{2}} + \frac{1}{\sqrt{10}}}{\frac{3}{\sqrt{10}} - \frac{1}{\sqrt{10}}} = \frac{3 - 2\sqrt{5} + 1}{3 - 1} = \frac{4 - 2\sqrt{5}}{2} = 2 - \sqrt{5}.$$

$M$  is given by  $\int_0^M 2x \, dx = \frac{1}{2} \Rightarrow M^2 = \frac{1}{2} \Rightarrow M = \frac{1}{\sqrt{2}}$  (OR by  $M = F^{-1}\left(\frac{1}{2}\right) = \frac{1}{\sqrt{2}}$ ).

$$\text{And } P = \frac{3\left(\frac{2}{3} - \frac{1}{\sqrt{2}}\right)}{\frac{1}{3\sqrt{2}}} = 6\sqrt{2} - 9.$$

In order to establish the given inequality “chain”, we must show that  $D > P$  and  $P > \gamma$  (there is no point in proving that  $D > \gamma$ ). One could reason this through by considering approximants to  $\sqrt{2}$  and  $\sqrt{5}$ , but care must be taken not to introduce fallacious “roundings” which don’t support the direction of the inequality under consideration. The alternative is to establish a set of equivalent numerical statements; for example, to show that  $D > P$  ...

$$2 - \sqrt{5} > 6\sqrt{2} - 9 \Leftrightarrow 11 - \sqrt{5} > 6\sqrt{2}$$

$$\Leftrightarrow 121 + 5 - 22\sqrt{5} > 72 \text{ (after squaring, since both sides are positive)}$$

$$\Leftrightarrow 54 > 22\sqrt{5} \text{ or } 27 > 11\sqrt{5} \Leftrightarrow 729 > 605 \text{ (again, squaring positive terms)}$$

and this final result clearly *IS* true, so the desired inequality is established.

---

**Section A: Pure Mathematics**

1. (i) The differential equation can be solved either by separating variables or using an integrating factor. In either case,  $\int \left(\frac{x+2}{x+1}\right) dx$ , or the negative of it is required, and this can be found either by re-writing  $\left(\frac{x+2}{x+1}\right)$  as  $1 + \frac{1}{x+1}$  or using the substitution,  $v = x + 1$ . Thus the solution is  $u = k(x + 1)e^x$ .

(ii) The substitution  $y = ze^{-x}$  yields  $\frac{dy}{dx} = z'e^{-x} - ze^{-x}$ , and  $\frac{d^2y}{dx^2} = z''e^{-x} - 2z'e^{-x} + ze^{-x}$ .

Substituting these expressions in the differential equation and simplifying gives

$((x + 1)z'' - (x + 2)z')e^{-x} = 0$  which is effectively the first order differential equation from part (i) with  $u = z'$ .

So  $z' = k(x + 1)e^x$ , which is an exact differential (or integration by parts could be used),  $z = kxe^x + c$  and so  $y = Ax + Be^{-x}$  as required.

(iii) Part (ii)'s substitution gives  $z'' - \frac{(x+2)}{(x+1)}z' = (x + 1)e^x$  which using the integrating factor from part (i) gives  $\frac{e^{-x}}{x+1}z' = \int 1 dx = x + c$ , and thus

$y = (x^2 + 1) + Ax + Be^{-x}$ . Alternatively, the solution to part (ii) is the complementary function and a quadratic particular integral should be conjectured, which in view of the cf need only be  $y = Cx^2 + D$ , yielding the same result.

2. As  $f\left(\frac{p}{q}\right) = 0$ ,  $q^{n-1}f\left(\frac{p}{q}\right) = 0$ , which, when evaluated, gives every term but one to be an integer, and so, that term,  $\frac{p^n}{q}$ , must be an integer, and as  $p$  and  $q$  are integers with no common factor greater than 1, this can only happen if  $q = 1$ , giving the required deduction.

(i) To show that the  $n$ th root of 2 is irrational, consider  $f(x) = x^n - 2$ , and evaluate  $f(1)$  and  $f(2)$ , then apply the stem of the question.

(ii) Considering the turning points of  $f(x) = x^3 - x + 1$ , there can only be one real root. Evaluating  $f(-2)$  and  $f(-1)$  and applying the stem gives the result.

(iii) Considering the graphs of  $y = x^n$  and  $y = 5x - 7$ , for  $n \geq 3$ , that these cannot intersect for  $x \geq 0$  can be observed by noting their signs for  $0 \leq x < 1 \cdot 4$ , and their gradients for  $x \geq 1 \cdot 4$ . For  $x < 0$ , and  $n$  even, it is sufficient to consider signs, whereas for  $n$  odd, it is enough to evaluate  $f(x) = x^n - 5x + 7$  for  $x = -2$ , and  $x = -1$  or  $-3$ , depending on the case, and then applying the stem. The case  $n = 2$ , can be demonstrated by completing the square and showing that there are no real roots.



Part (i) could be demonstrated by a minor variant to the usual proof for the irrationality of the square root of 2. Parts (ii) and (iii) could be shown by applying the stem and then considering the left hand side of each equation for the cases  $n$  even and  $n$  odd.

3. Considering the quadratic equation  $pt^2 - qt + p^2 = 0$ , the condition  $q^2 \neq 4p^3$  shows, by considering the discriminant, that the roots are unequal. Supposing that  $x^3 - 3px + q$  can be written as  $a(x - \alpha)^3 + b(x - \beta)^3$ , and equating coefficients generates the four equations

$$\begin{aligned} a + b &= 1 \\ -3\alpha a - 3\beta b &= 0 \\ 3\alpha^2 a + 3\beta^2 b &= -3p \\ -\alpha^3 a - \beta^3 b &= q \end{aligned}$$

The first pair may be solved simultaneously to give  $a = \frac{-\beta}{\alpha - \beta}$  and  $b = \frac{\alpha}{\alpha - \beta}$ .

Substitution yields  $p = \alpha\beta$  and  $q = \alpha\beta(\alpha + \beta)$ , or alternatively,

$$\alpha\beta = p \text{ and } \alpha + \beta = \frac{q}{p} \text{ and so } \alpha \text{ and } \beta \text{ satisfy } t^2 - \frac{q}{p}t + p = 0 \text{ i.e. } pt^2 - qt + p^2 = 0.$$

For  $p = 8$ ,  $q = 48$ ,  $q^2 - 4p^3 = 2^8 \neq 0$ .

Hence  $\alpha$  and  $\beta$  are the roots of  $8t^2 - 48t + 64 = 0$ , i.e.  $t^2 - 6t + 8 = 0$  and wlog  $\alpha = 2$ ,  $\beta = 4$ ,  $a = 2$ ,  $b = -1$ .

So  $x^3 - 24x + 48 = 0$  can be re-arranged as  $\left(\frac{x-4}{x-2}\right)^3 = 2$

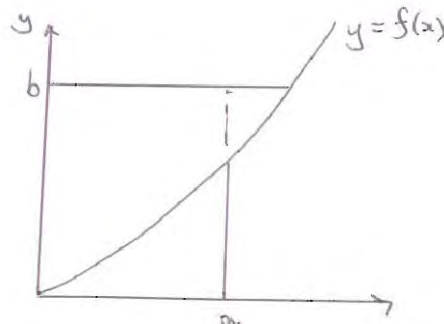
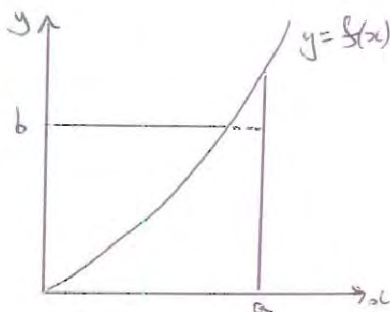
$$\text{As } \omega^3 = 1, \frac{x-4}{x-2} = \sqrt[3]{2}, \omega\sqrt[3]{2}, \omega^2\sqrt[3]{2} \text{ and so } x = \frac{2(2-\sqrt[3]{2})}{1-\sqrt[3]{2}}, \frac{2(2-\omega\sqrt[3]{2})}{1-\omega\sqrt[3]{2}}, \frac{2(2-\omega^2\sqrt[3]{2})}{1-\omega^2\sqrt[3]{2}}$$

If  $q = 2r^3$  and  $p = r^2$ ,  $q^2 = 4p^3$  so the first part cannot be used.

However,  $x^3 - 3r^2x + 2r^3 = 0$  can be readily factorised as  $(x - r)^2(x + 2r) = 0$  and so  $x = r$  (repeated) or  $-2r$

4. (i)  $\int_0^a f(x)dx$  is the area between the curve  $y = f(x)$ , the  $x$  axis, and the line  $x = a$   
 $\int_0^b f^{-1}(y)dy$  is the area between the curve  $y = f(x)$ , the  $y$  axis, and the line  $y = b$ .

The sum of these areas is greater than or equal to the area of the rectangle, with equality holding if  $b = f(a)$ .



(ii) With  $f(x) = x^{p-1}$ , the sum of the two integrals is  $\frac{1}{p}a^p + \frac{p-1}{p}b^{\frac{p}{p-1}}$

But as  $\frac{1}{p} + \frac{1}{q} = 1$ ,  $\frac{1}{q} = \frac{p-1}{p}$ , and so the required result follows by applying the result of part (i).

If  $b = a^{p-1}$ , simple algebra shows  $a = b^{q-1}$ , so  $\frac{1}{p}a^p + \frac{1}{q}b^q = \frac{1}{p}ab + \frac{1}{q}ba = ab$  and equality is verified.

(iii)  $f(x) = \sin x$  satisfies the conditions of part (i)

So  $\int_0^a f(x) dx = 1 - \cos a$ , and, by parts,  $\int_0^b f^{-1}(y) dy = b \sin^{-1} b + \sqrt{1 - b^2} - 1$  which together give the required result.

Choosing  $a = 0$ , and  $b = t^{-1}$ , part (i) gives  $0 \leq t^{-1} \sin^{-1}(t^{-1}) + \sqrt{1 - t^{-2}} - 1$  which can be re-arranged to give the required result.

5.

$$r^2 d\theta = (x^2 + y^2) \frac{d}{dt} \left( \tan^{-1} \left( \frac{y}{x} \right) \right) dt = (x^2 + y^2) \frac{1}{1 + \left( \frac{y}{x} \right)^2} \frac{\left( x \frac{dy}{dt} - y \frac{dx}{dt} \right)}{x^2} dt = \left( x \frac{dy}{dt} - y \frac{dx}{dt} \right) dt$$

and hence integrating gives the result.

A is  $(x - a \cos t, y - a \sin t)$  and B is  $(x + b \cos t, y + b \sin t)$

$[A] = \frac{1}{2} \int_0^{2\pi} (x - a \cos t) \left( \frac{dy}{dt} - a \cos t \right) - (y - a \sin t) \left( \frac{dx}{dt} + a \sin t \right) dt$  using (\*) which leads directly to  $[A] = [P] - af + \pi a^2$ .

Replacing  $-a$  by  $b$  gives  $[B] = [P] + bf + \pi b^2$

As  $[A] = [B]$ , these expressions can be equated to give  $f = \pi(a - b)$ .

The area between curves C and D is  $[A] - [P] = -af + \pi a^2$  which by substitution gives  $\pi ab$  as required.

6. Using the substitution  $t = \tanh \left( \frac{u}{2} \right)$ , then it can be shown that  $T = U$ , by making use of  $2 \sinh \left( \frac{u}{2} \right) \cosh \left( \frac{u}{2} \right) = \sinh u$  to obtain the integrand, and  $\tanh^{-1} t = \frac{1}{2} \ln \left( \frac{1+t}{1-t} \right)$  to obtain the limits.

If instead, integration by parts is used differentiating  $\tanh^{-1} t$  and integrating  $\frac{1}{t}$ , and

employing  $\tanh^{-1} t = \frac{1}{2} \ln \left( \frac{1+t}{1-t} \right)$  to demonstrate that  $[\tanh^{-1} t \ln t]_{\frac{1}{3}}^{\frac{1}{2}} = 0$ ,  $T = V$ .

The substitution  $t = e^{-2x}$  can be used to demonstrate that  $T = X$ .

(Alternatively, starting from  $U$ , the substitution  $u = 2 \tanh^{-1} t$  obtains  $U = T$ , the substitution  $u = -\ln v$  obtains  $U = V$ , and the substitution  $u = 2x$  followed by integration by parts yields  $U = X$ ; starting from  $V$ , by parts it can be shown that  $V = T$ , using the substitution  $v = e^{-u}$  that  $V = U$ , and the substitution  $v = \tanh x$  that  $V = X$ ; or starting from  $X$ , the substitution  $x = -\frac{1}{2} \ln t$  gives  $X = T$ , integration by parts gives  $X = U$ , and the substitution  $x = \tanh^{-1} v$  gives  $X = V$ .)

7. (i) The induction requires  $T_{k+2} = A_{k+2} + B_{k+2} \sqrt{a(a+1)}$  and  $A_{k+2}^2 - a(a+1)B_{k+2}^2 = 1$ .

$$T_{k+2} = \left( A_k + B_k \sqrt{a(a+1)} \right) \left( \sqrt{a+1} + \sqrt{a} \right)^2 = \left( A_k + B_k \sqrt{a(a+1)} \right) T_2$$

$T_2 = (2a + 1 + 2\sqrt{a(a+1)})$  and so  $A_2 = 2a + 1$  and  $B_2 = 2$ , and

$$A_2^2 - a(a+1)B_2^2 = (2a+1)^2 - a(a+1)2^2 = 1 \text{ the result is true for } n = 2.$$

Evaluating  $T_{k+2}$  using  $(A_k + B_k\sqrt{a(a+1)})T_2$  then  $A_{k+2} = (2a+1)A_k + 2a(a+1)B_k$  and  $B_{k+2} = 2A_k + (2a+1)B_k$ , and so substituting and simplifying,

$$A_{k+2}^2 - a(a+1)B_{k+2}^2 = A_k^2 - a(a+1)B_k^2 = 1 \text{ by the induction.}$$

$$(ii) \quad T_n = (\sqrt{a+1} + \sqrt{a})T_m = (\sqrt{a+1} + \sqrt{a})(A_m + B_m\sqrt{a(a+1)})$$

$$= (A_m + aB_m)\sqrt{a+1} + (A_m + (a+1)B_m)\sqrt{a} \text{ which is of required form because}$$

$$C_n = A_m + aB_m \text{ and } D_n = A_m + (a+1)B_m \text{ are integers and}$$

$$(a+1)C_n^2 - aD_n^2 = (a+1)(A_m + aB_m)^2 - a(A_m + (a+1)B_m)^2$$

$$= A_m^2 - a(a+1)B_m^2 = 1 \text{ as required.}$$

Trivially the case  $n = 1$  is true.

(iii) In the case that  $n$  is even,

$$T_n = A_n + B_n\sqrt{a(a+1)} = \sqrt{A_n^2} + \sqrt{a(a+1)B_n^2} = \sqrt{a(a+1)B_n^2 + 1} + \sqrt{a(a+1)B_n^2}$$

as required,

$$\text{and in the case that } n \text{ is odd, } T_n = C_n\sqrt{a+1} + D_n\sqrt{a} = \sqrt{(a+1)C_n^2} + \sqrt{aD_n^2} = \sqrt{aD_n^2 + 1} + \sqrt{aD_n^2} \text{ as required.}$$

$$8. \quad w = u + iv = \frac{1+i(x+iy)}{i+(x+iy)} = \frac{2x}{x^2+(1+y)^2} + i \frac{x^2-(1-y^2)}{x^2+(1+y)^2} \text{ using the complex conjugate, so}$$

$$u = \frac{2x}{x^2+(1+y)^2} \text{ and } v = \frac{x^2-(1-y^2)}{x^2+(1+y)^2}$$

(i) If  $x = \tan \frac{\theta}{2}$ ,  $y = 0$ , then  $u = \sin \theta$ , and  $v = -\cos \theta$ , using the general result and so  $u^2 + v^2 = 1$  but the point  $\theta = \pi$  i.e.  $(0,1)$  is not included.

(ii) If  $-1 < x < 1$ , and  $y = 0$ , then it is the same locus as (i) except  $-\frac{\pi}{2} < \theta < \frac{\pi}{2}$ , and so it is the semi-circle that is the part of  $u^2 + v^2 = 1$  below the  $u$  axis.

(iii)  $x = 0$ , then  $u = 0$  and  $v = \frac{y-1}{y+1}$ , and as  $-1 < y < 1$  which is that part of the  $v$  axis below the  $u$  axis, i.e.  $-\infty < v < 0$ .

(iv) Let  $x = 2 \tan \frac{\theta}{2}$  and  $y = 1$ , so as  $-\infty < x < \infty$ ,  $-\pi < \theta < \pi$ , then  $u = \frac{1}{2} \sin \theta$  and  $v = \frac{1}{2}(1 - \cos \theta)$ , so the locus is the circle  $u^2 + \left(v - \frac{1}{2}\right)^2 = \left(\frac{1}{2}\right)^2$  excluding the point  $\theta = \pi$ , which is  $(0,1)$ .

## Section B: Mechanics

9. For the initial equilibrium position, suppose  $\theta = \alpha$ , considering potential energy, with potential energy zero level at O,  $U = 4mga \cos \theta + 3mga \sin \theta + c$ , for equilibrium,  $\frac{dU}{d\theta} = 0$ , giving  $\tan \alpha = \frac{3}{4}$ .

Then conserving energy,

$4mga \cos \theta + 3mga \sin \theta + \frac{1}{2} 7m (a\dot{\theta})^2 = 4mga \cos \alpha + 3mga \sin \alpha$  which having substituted for  $\alpha$  gives  $7a (\dot{\theta})^2 + 8g \cos \theta + 6g \sin \theta = 10g$

(i) Resolving radially in general for Q, if R is the contact force,

$4mg \cos \theta - R = 4ma\dot{\theta}^2$ , so when  $\theta = \beta$ ,  $R = 0$ , and thus  $4mg \cos \beta = 4ma\dot{\theta}^2$  and so substituting for  $\dot{\theta}^2$  and  $\theta$  in the energy result gives  $15 \cos \beta + 6 \sin \beta = 10$ .

(ii) Resolving tangentially for Q,  $4mg \sin \theta - T = 4ma\ddot{\theta}$  and for P,

$T - 3mg \cos \theta = 3ma\ddot{\theta}$  so eliminating  $\ddot{\theta}$  between them and re-arranging,

$T = \frac{12}{7}mg(\sin \theta + \cos \theta)$  as required.

10. Suppose Q is displaced  $x$  and P is displaced  $y$ , and let  $\lambda = \frac{1}{2} m a \omega^2$ ,

then  $m\ddot{x} = \frac{\lambda(y-x)}{a}$  and  $m\ddot{y} = \frac{-\lambda(y-x)}{a}$ .

Adding and integrating leads to  $x + y = ut$ .

Subtracting gives  $\ddot{y} - \ddot{x} = -\omega^2 (y - x)$  and so  $y - x = \frac{u}{\omega} \sin \omega t$  from solving the differential equation and employing the initial conditions that when  $t = 0$ ,  $x = y = 0$ ,  $\dot{x} = 0$ , and  $\dot{y} = u$ .

Thus,  $x = \frac{1}{2} \left( ut - \frac{u}{\omega} \sin \omega t \right)$  and  $y = \frac{1}{2} \left( ut + \frac{u}{\omega} \sin \omega t \right)$ . When the string next returns to length  $a$ ,  $y - x = \frac{u}{\omega} \sin \omega t = 0$ ,  $\omega t = \pi$  and so  $x = y = \frac{1}{2} \frac{u}{\omega} \pi$  as required.

So at this time,  $\dot{x} = u$ , and  $\dot{y} = 0$ .

The total time between the impulse and the subsequent collision is  $\frac{\pi}{\omega} + \frac{a}{u}$ .

11. On the one hand the distance between the point on the disc vertically below  $(a, 0, 0)$  and P is  $b \sin \phi$  as the string length  $b$  makes an angle  $\phi$  with the vertical. On the other, it is  $2a \sin \frac{1}{2} \theta$ , the third side of an isosceles triangle with two radii  $a$  at an angle  $\theta$ , and hence the required result.

The horizontal component of the tension in each string is  $T \sin \phi$  and it acts at a perpendicular distance  $a \cos \frac{1}{2} \theta$  from the axis of symmetry. Thus the couple is

$n T \sin \phi a \cos \frac{1}{2} \theta$ . Resolving vertically,  $n T \cos \phi = mg$ . Substituting for  $T$  in the expression for the couple and then using  $b \sin \phi = 2a \sin \frac{1}{2} \theta$  to eliminate  $\phi$ , gives the required result.

The initial potential energy relative to the position where the strings are vertical is

$mgb(1 - \cos \phi)$ . This is converted into kinetic energy  $\frac{1}{2} \frac{1}{2} m a^2 \omega^2$ . Equating these

expressions and once again using  $b \sin \phi = 2a \sin \frac{1}{2} \theta$  to eliminate  $\phi$ , gives the required result.

### Section C: Probability and Statistics

12. As  $G_Y(t) = G(H(t))$ ,  $G'_Y(t) = G'(H(t)) \times H'(t)$ , and as  $H(1) = 1$ ,  $H'(1) = E(X_i)$ ,  $G'(1) = E(N)$ , and  $G'_Y(1) = E(Y)$ , the first result follows.

Similarly,  $G''_Y(t) = G''(H(t)) \times (H'(t))^2 + G'(H(t)) \times H''(t)$ , and

$$\begin{aligned} \text{Var}(Y) &= G''_Y(1) + G'_Y(1) - (G'_Y(1))^2 \\ &= G''(H(1)) \times (H'(1))^2 + G'(H(1)) \times H''(1) + E(Y) - (E(Y))^2 \\ &= \left( \text{Var}(N) + (E(N))^2 - E(N) \right) \times (E(X_i))^2 + E(N) \times \left( \text{Var}(X_i) + (E(X_i))^2 - \right. \\ & \left. E(X_i) \right) + E(N) E(X_i) - (E(N) E(X_i))^2 \\ &= \text{Var}(N) \times (E(X_i))^2 + E(N) \times \text{Var}(X_i) \text{ as required.} \end{aligned}$$

A fair coin tossed until a head appears is distributed  $Geo\left(\frac{1}{2}\right)$  so  $G(t) = \frac{t}{2-t}$ . The PGF for the number of heads when a fair coin is tossed once is  $\frac{1}{2} + \frac{1}{2}t$ . Thus  $G_Y(t) = \frac{1+t}{3-t}$ .

Using the results  $E(Y) = 2 \times \frac{1}{2} = 1$ , and  $\text{Var}(Y) = \frac{1-\frac{1}{2}}{\left(\frac{1}{2}\right)^2} \times \left(\frac{1}{2}\right)^2 + 2 \times \frac{1}{4} = 1$ .

$P(Y = r)$ , being the coefficient of  $t^r$  in  $G_Y(t)$ , is  $\frac{4}{3^{r+1}}$  for  $r \geq 1$ , and  $\frac{1}{3}$  for  $r = 0$ .

13. (i)  $P(X = r) = \binom{k}{r} \left(\frac{b}{n}\right)^r \left(\frac{n-b}{n}\right)^{k-r}$ ,  $P(X = r + 1) = \binom{k}{r+1} \left(\frac{b}{n}\right)^{r+1} \left(\frac{n-b}{n}\right)^{k-r-1}$

and so  $\frac{P(X=r+1)}{P(X=r)} = \frac{k-r}{r+1} \frac{b}{n-b}$ . The most probable value of  $X$  is the minimum value of  $r$  such that  $\frac{k-r}{r+1} \frac{b}{n-b} < 1$ , because this expression decreases as  $r$  increases. All the factors are

positive so it is simple to rearrange the algebra to obtain  $r > \frac{(k+1)}{n}b - 1$  so  $r = \left\lfloor \frac{(k+1)}{n}b \right\rfloor$ .

The answer is not unique when there is a value of  $r$  such that  $\frac{k-r}{r+1} \frac{b}{n-b} = 1$ , in which case,  $= \frac{(k+1)}{n}b$ , which will only happen if  $n$  divides  $(k+1)b$ .

(ii) Using the same strategy as for part (i),  $P(X = r) = \frac{\binom{b}{r} \binom{n-b}{k-r}}{\binom{n}{k}}$ ,

$$P(X = r + 1) = \frac{\binom{b}{r+1} \binom{n-b}{k-r-1}}{\binom{n}{k}}, \text{ and so } \frac{P(X=r+1)}{P(X=r)} = \frac{k-r}{r+1} \frac{b-r}{n-b-(k-r)+1}.$$

Again, the most probable value of  $X$  is the minimum value of  $r$  such that

$\frac{k-r}{r+1} \frac{b-r}{n-b-(k-r)+1} < 1$ , giving  $r = \left\lfloor \frac{(k+1)(b+1)}{(n+2)} \right\rfloor$ , and this is not unique if  $(n+2)$  divides  $(k+1)(b+1)$ .

The Cambridge Assessment Group is Europe's largest assessment agency. It plays a leading role in researching, developing and delivering assessment to eight million candidates in 150 countries.

Cambridge Assessment  
1 Hills Road  
Cambridge CB1 2EU  
United Kingdom  
tel +44 (0) 1223 553311  
fax +44 (0) 1223 460278



Cambridge Assessment is the brand name of the University of Cambridge Local Examinations Syndicate, a department of the University of Cambridge. Cambridge Assessment is a not-for-profit organisation.