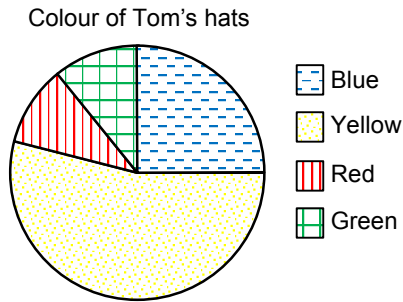


Topic Check In - 12.02 Interpreting and representing data

1. This pie chart shows the colour of hats that Tom owns. Which colour hat does he own most of?



2. What percentage of Tom's hats are blue?
3. This pictogram shows how many laptops were sold by a company during one week.

Monday	
Tuesday	
Wednesday	
Thursday	
Friday	

Key: represents 10 laptops

How many laptops were sold on Tuesday?

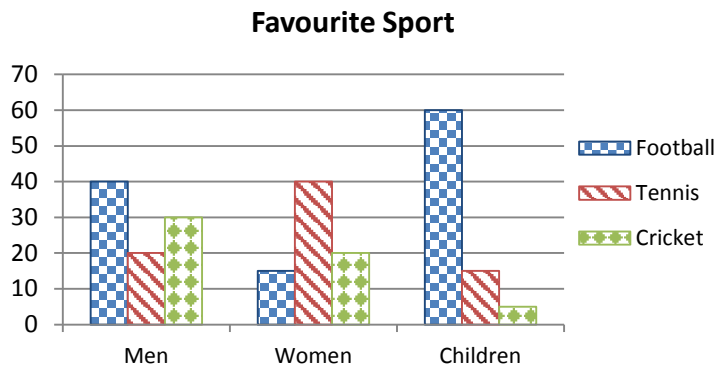
4. Ken recorded the number of cars he sold in one week.

Colour of car	Frequency
Blue	5
Silver	3
White	1
Red	3
Other	2

How many cars did he sell altogether?



5. Some people were asked which of football, tennis or cricket was their favourite sport. This bar chart shows the results.

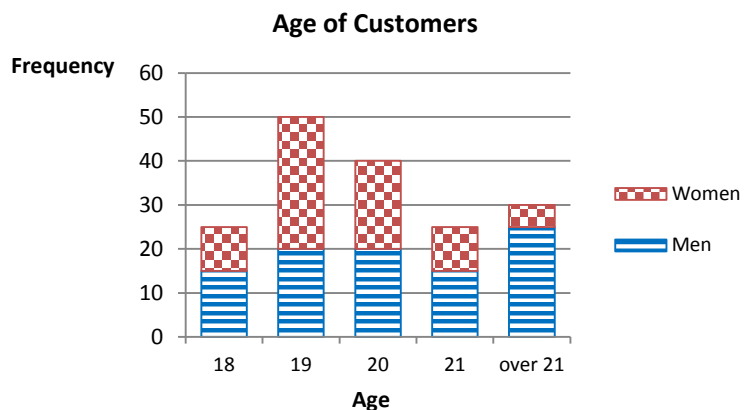


Which sport was most popular with women?

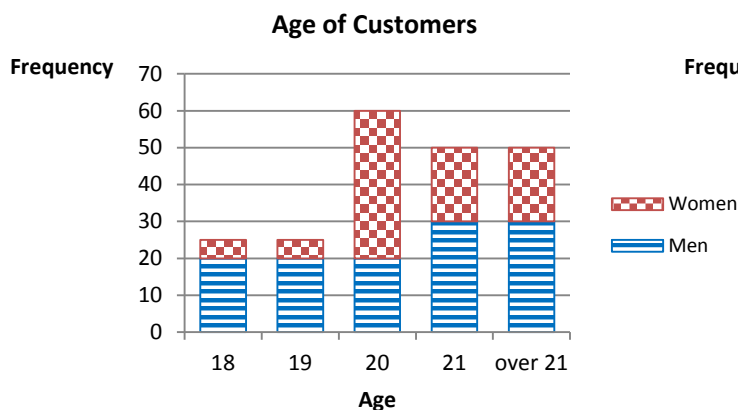
6. Kate says, "Most of the men who were asked said that they liked football best". Is Kate right? Explain your answer.
7. Which of the bar charts represents the data given in the frequency table?

Age	Frequency	
	Men	Women
18	10	15
19	30	20
20	20	20
21	10	15
over 21	5	25

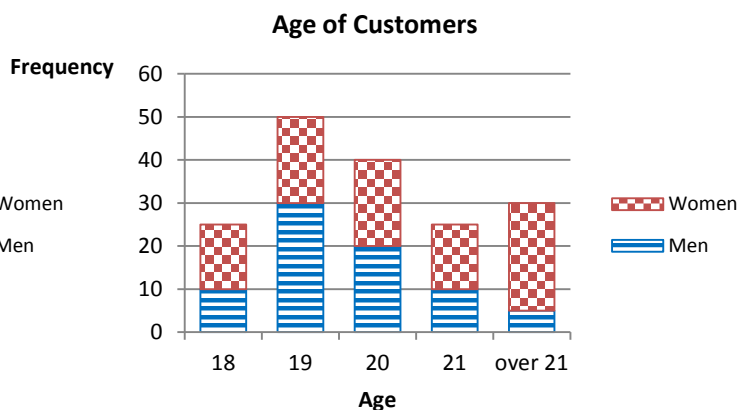
Bar chart A



Bar chart B

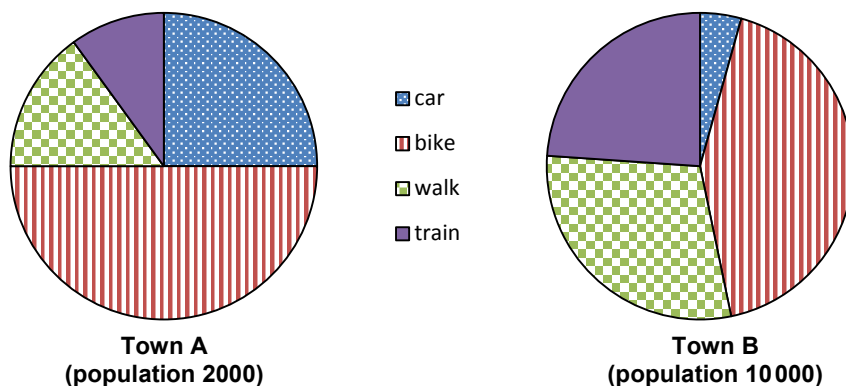


Bar chart C



GCSE (9-1) MATHEMATICS

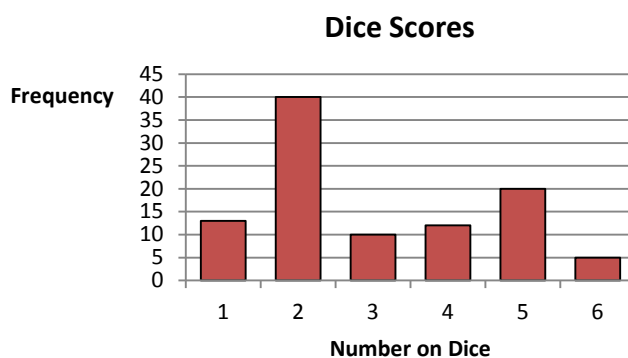
8. These pie charts show how people travel to work in two towns. The populations of the towns are given.



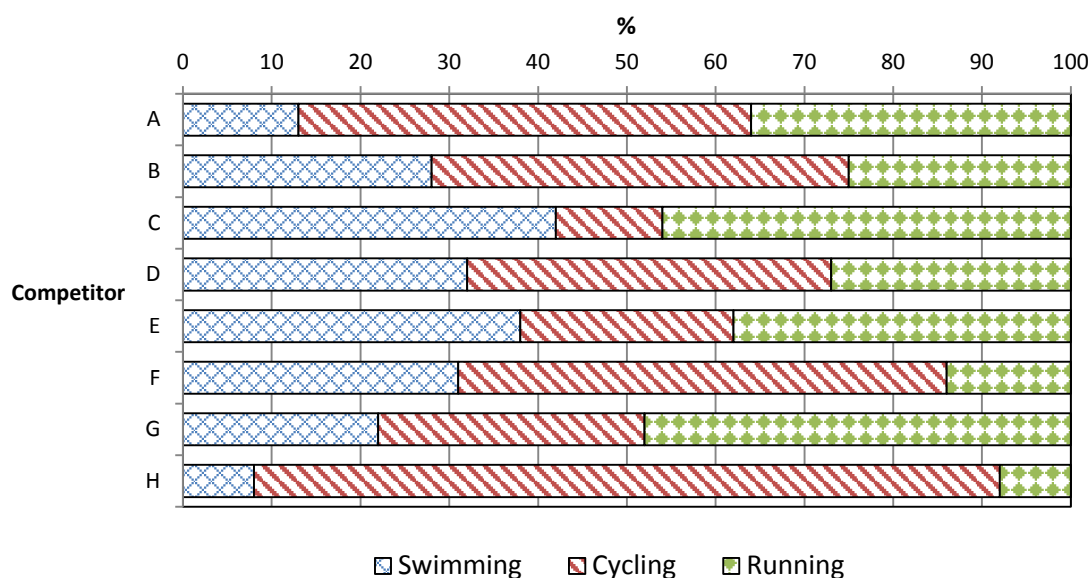
In which town do more people travel to work by bike? Explain your answer.

9. A dice is rolled 100 times. This bar chart shows the results.

How many more 2s than 5s were thrown?



10. The graph below shows the percentage of time that 8 competitors spent on each of the 3 triathlon events: Swimming, Cycling and Running.



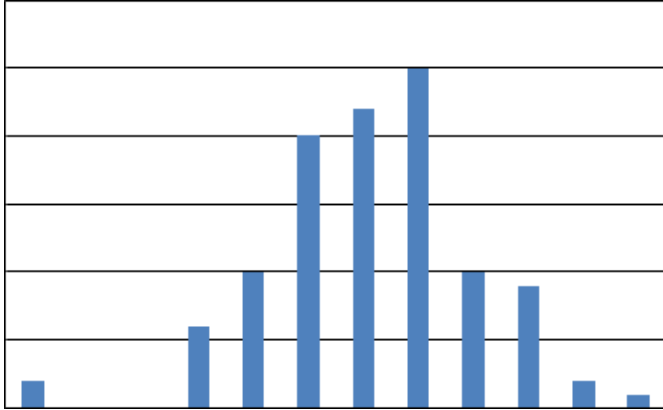
Which competitor spent 55% of their time cycling?



GCSE (9-1) MATHEMATICS

Extension

This is a bar chart but the title and labels for both axes are missing.



What data do you think it might be representing?

Write down as many ideas as you can for the data that it might represent.

For each idea suggest a title for the graph and labels for both axes.



GCSE (9–1) MATHEMATICS

Answer

1. Yellow
2. 25%
3. 15
4. 14
5. Tennis
6. No, 90 men were asked in total and 50 did not choose football, which is over half.
7. Graph C
8. Town B because although the sector is smaller, the population is much larger.
9. 20
10. F

Extension

Possible suggestions include hours of sunshine, number of people cycling to work/school, sales of ice creams, etc.



We'd like to know your view on the resources we produce. By clicking on the 'Like' or 'Dislike' button you can help us to ensure that our resources work for you. When the email template pops up please add additional comments if you wish and then just click 'Send'. Thank you.

OCR Resources: *the small print*

OCR's resources are provided to support the teaching of OCR specifications, but in no way constitute an endorsed teaching method that is required by the Board, and the decision to use them lies with the individual teacher. Whilst every effort is made to ensure the accuracy of the content, OCR cannot be held responsible for any errors or omissions within these resources. We update our resources on a regular basis, so please check the OCR website to ensure you have the most up to date version.

© OCR 2015 - This resource may be freely copied and distributed, as long as the OCR logo and this message remain intact and OCR is acknowledged as the originator of this work.

OCR acknowledges the use of the following content: Maths and English icons: Air0ne/Shutterstock.com



Assessment Objective	Qu.	Topic	R	A	G
AO1	1	Find mode from pie chart.			
AO1	2	Express pie chart data as percentages.			
AO1	3	Interpret pictogram data.			
AO1	4	Summarise data from frequency table.			
AO1	5	Find mode from multiple bar chart.			
AO2	6	Interpret data displayed in multiple bar chart.			
AO2	7	Interpret frequency data in tables and charts.			
AO2	8	Compare pie charts.			
AO3	9	Interpret data from bar chart.			
AO3	10	Interpret data displayed in graph.			

Assessment Objective	Qu.	Topic	R	A	G
AO1	1	Find mode from pie chart.			
AO1	2	Express pie chart data as percentages.			
AO1	3	Interpret pictogram data.			
AO1	4	Summarise data from frequency table.			
AO1	5	Find mode from multiple bar chart.			
AO2	6	Interpret data displayed in multiple bar chart.			
AO2	7	Interpret frequency data in tables and charts.			
AO2	8	Compare pie charts.			
AO3	9	Interpret data from bar chart.			
AO3	10	Interpret data displayed in graph.			

Assessment Objective	Qu.	Topic	R	A	G
AO1	1	Find mode from pie chart.			
AO1	2	Express pie chart data as percentages.			
AO1	3	Interpret pictogram data.			
AO1	4	Summarise data from frequency table.			
AO1	5	Find mode from multiple bar chart.			
AO2	6	Interpret data displayed in multiple bar chart.			
AO2	7	Interpret frequency data in tables and charts.			
AO2	8	Compare pie charts.			
AO3	9	Interpret data from bar chart.			
AO3	10	Interpret data displayed in graph.			

Assessment Objective	Qu.	Topic	R	A	G
AO1	1	Find mode from pie chart.			
AO1	2	Express pie chart data as percentages.			
AO1	3	Interpret pictogram data.			
AO1	4	Summarise data from frequency table.			
AO1	5	Find mode from multiple bar chart.			
AO2	6	Interpret data displayed in multiple bar chart.			
AO2	7	Interpret frequency data in tables and charts.			
AO2	8	Compare pie charts.			
AO3	9	Interpret data from bar chart.			
AO3	10	Interpret data displayed in graph.			

