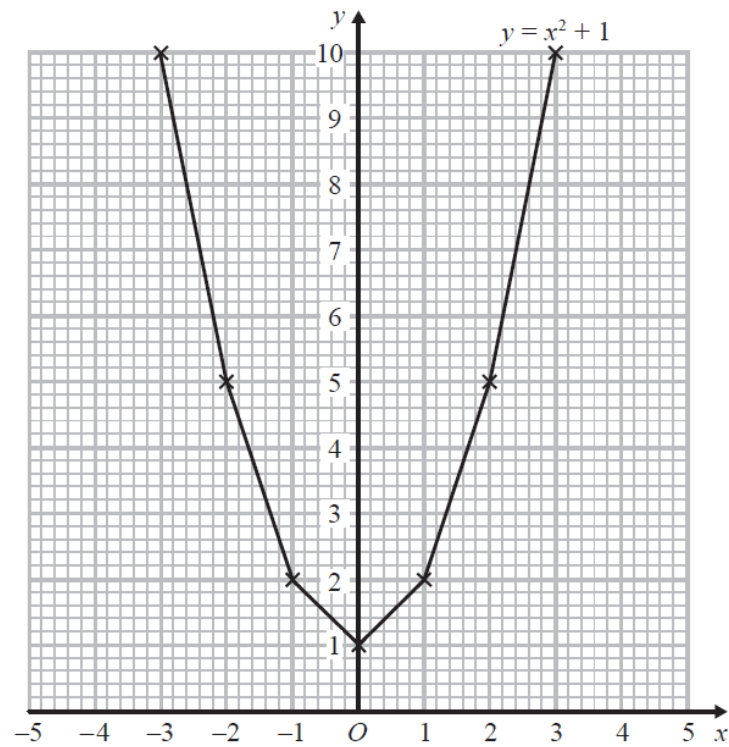


- 1 Brogan needs to draw the graph of $y = x^2 + 1$

Here is her graph.



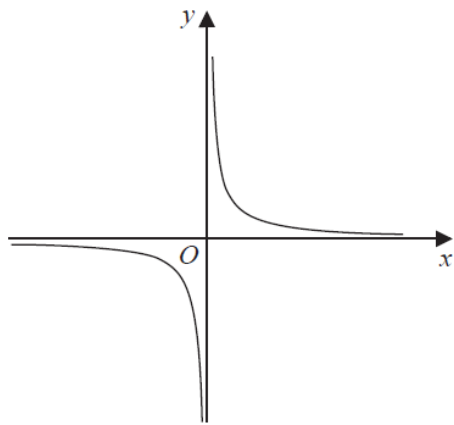
Write down one thing that is wrong with Brogan's graph.

.....

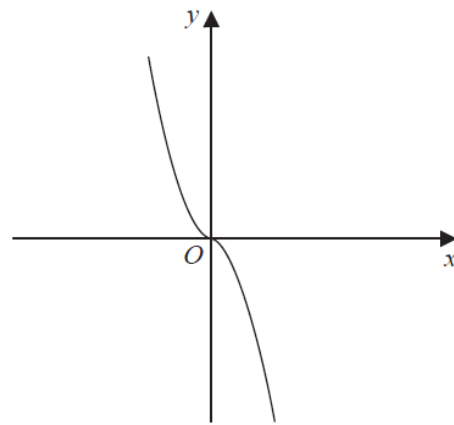
.....

(Total for Question is 1 mark)

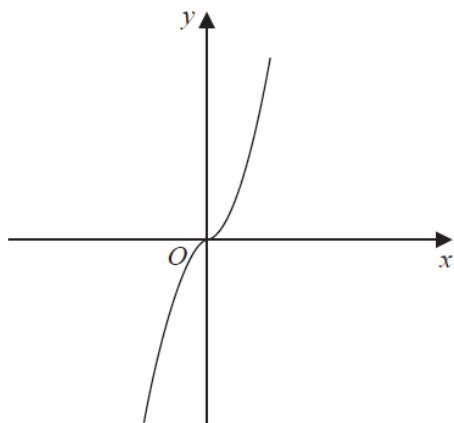
2 The diagram shows four graphs.



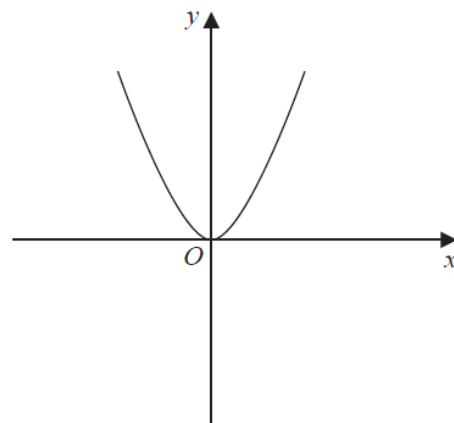
Graph A



Graph B



Graph C



Graph D

Each of the equations in the table is the equation of one of the graphs.

Complete the table.

Equation	Letter of graph
$y = -x^3$	
$y = x^3$	
$y = x^2$	
$y = \frac{1}{x}$	

(Total for Question is 2 marks)