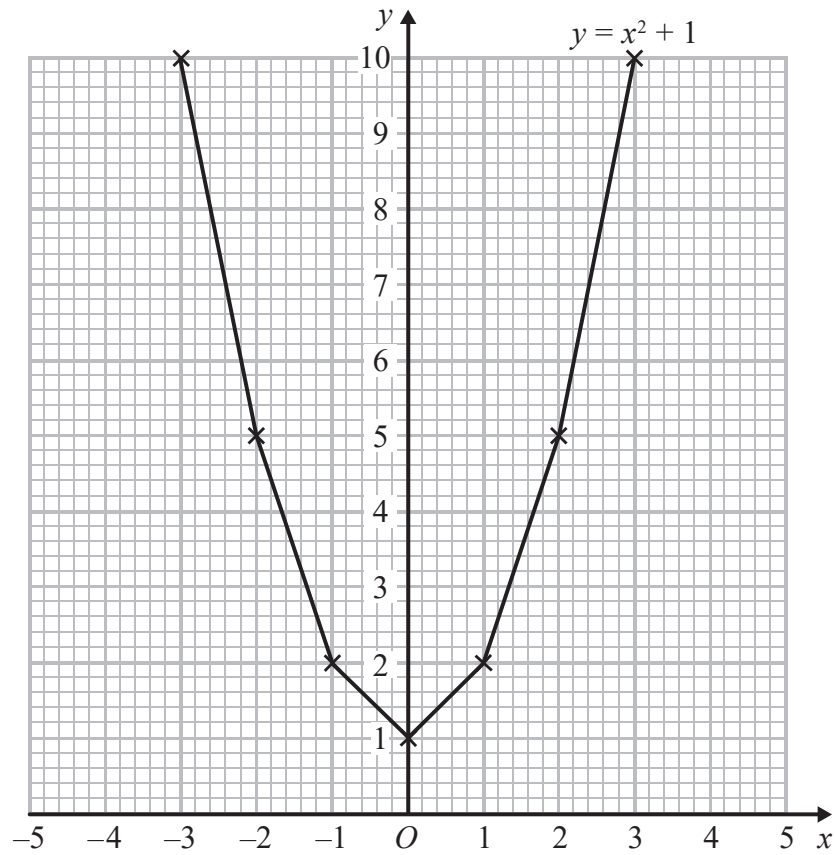


1. Brogan needs to draw the graph of  $y = x^2 + 1$

Here is her graph.

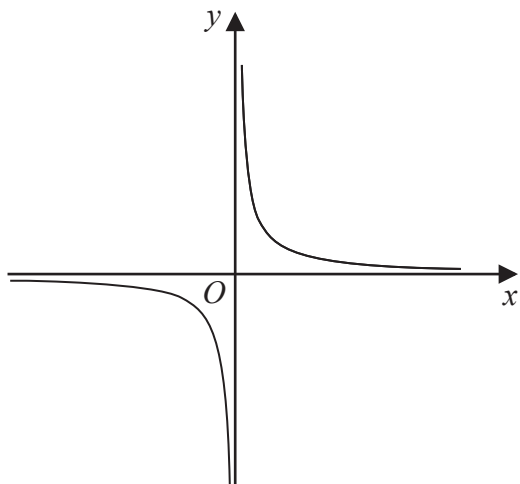


Write down one thing that is wrong with Brogan's graph.

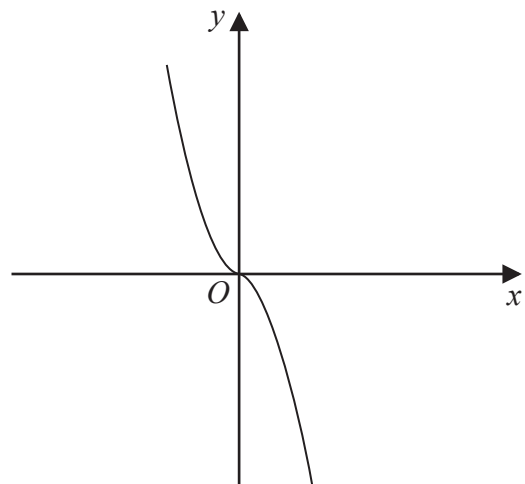
Brogan has used a ruler to draw her curve ✓

(Total for Question is 1 mark)

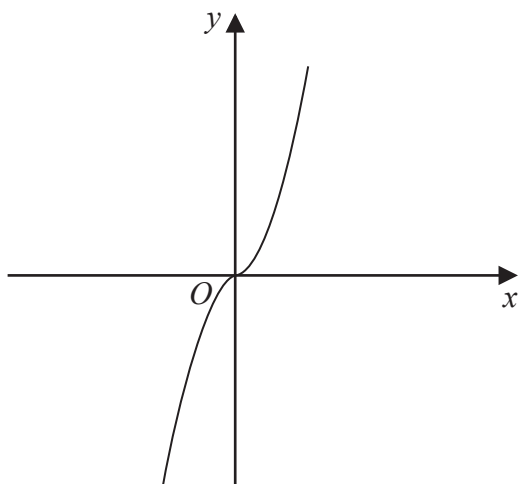
2. The diagram shows four graphs.



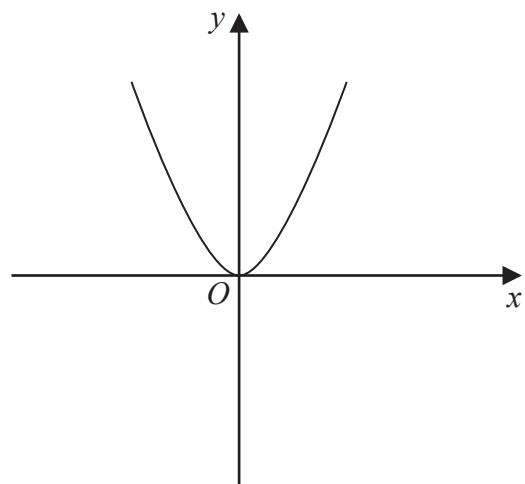
Graph A



Graph B



Graph C

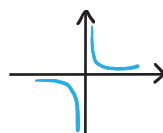
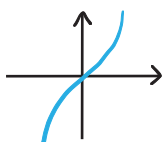


Graph D

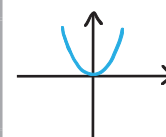
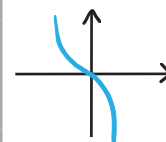
Each of the equations in the table is the equation of one of the graphs.

Complete the table.

①  
①



Equation	Letter of graph
$y = -x^3$	B
$y = x^3$	C
$y = x^2$	D
$y = \frac{1}{x}$	A



(Total for Question is 2 marks)