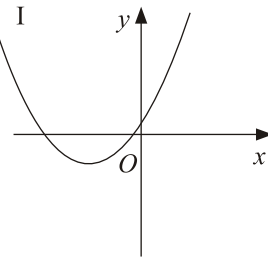
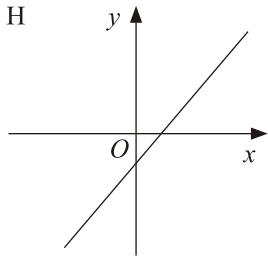
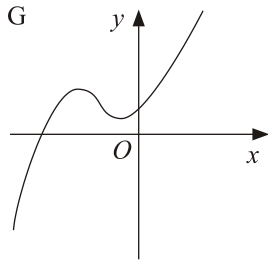
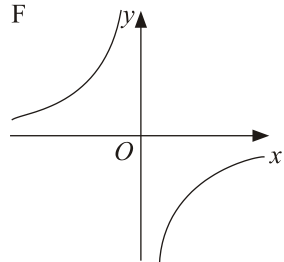
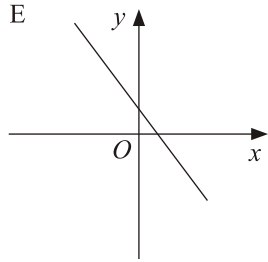
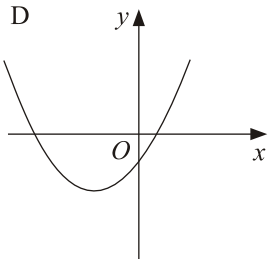
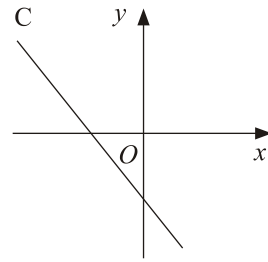
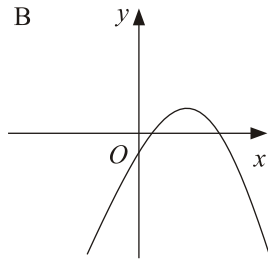
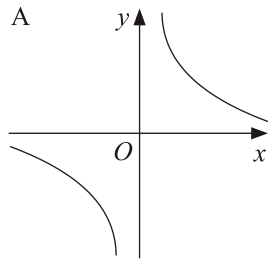


1.



Write down the letter of the graph which could have the equation

(i)  $y = 1 - 3x$

.....

(ii)  $y = \frac{1}{x}$

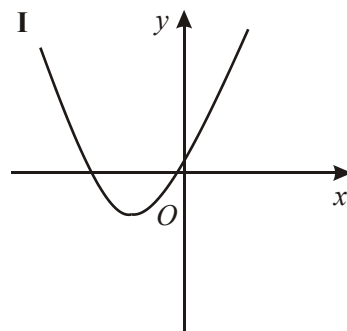
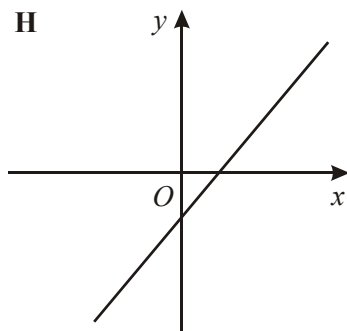
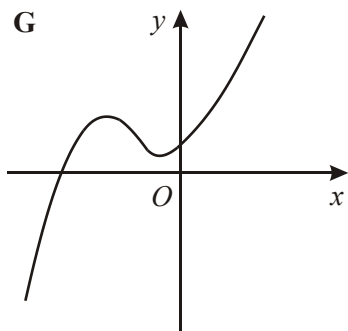
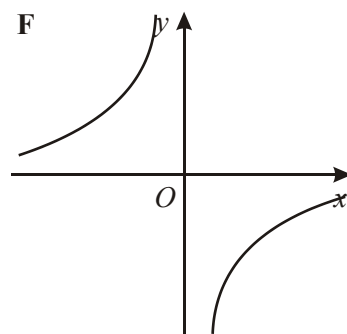
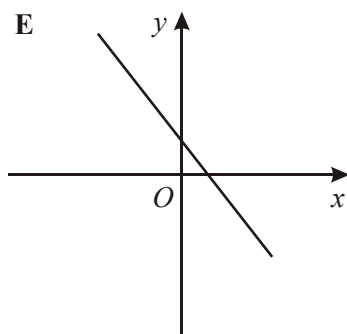
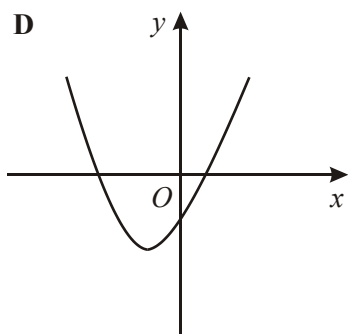
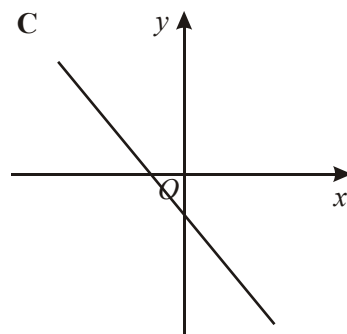
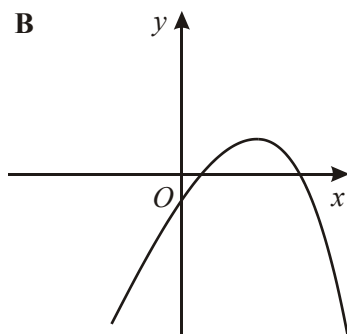
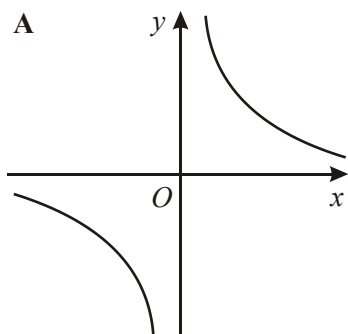
.....

(iii)  $y = 2x^2 + 7x + 3$

.....

(Total 3 marks)

2.



Write down the letter of the graph which could have the equation

(i)  $y = 3x - 2$

.....

(ii)  $y = 2x^2 + 5x - 3$

.....

(iii)  $y = \frac{3}{x}$

.....

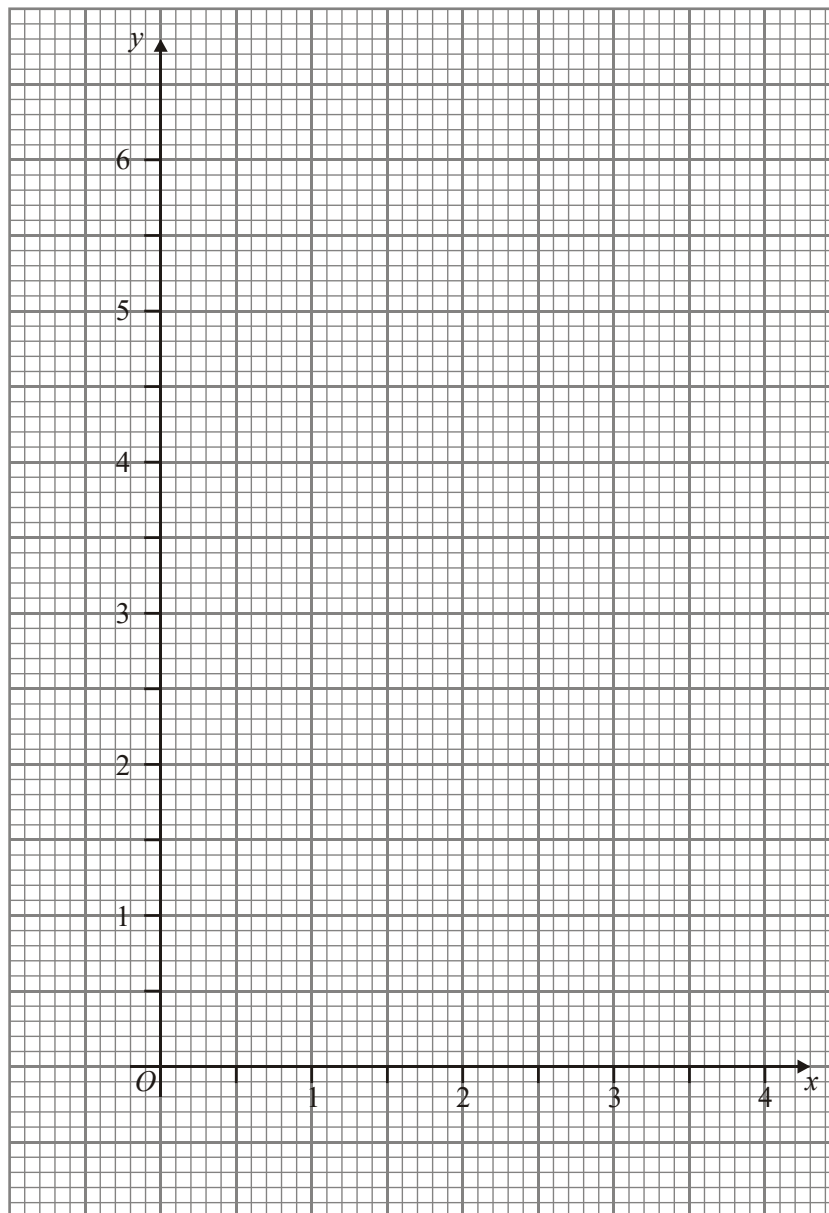
**(Total 3 marks)**

3. (a) Complete the table of values for  $y = \frac{1}{x}$

$x$	0.2	0.4	0.8	1.0	2.0	4.0
$y$	5.0		1.25	1.0		

(2)

- (b) On the grid, draw the graph of  $y = \frac{1}{x}$  for  $x > 0.2$



(2)  
(Total 4 marks)

1. (i) E 3  
*BI for E cao*
- (ii) A  
*BI for A cao*
- (iii) I  
*BI for I cao*
- [3]**
- 
2. H  
D  
A 3  
*BI cao*  
*BI cao*  
*BI cao*
- [3]**
- 
3. (a) 5.0 2.5 1.25 1.0 0.5 0.25 2  
*B2 all 3 correct*  
*(BI for any 2 correct)*
- (b) Graph 2  
*BI ft for all points plotted correctly*  
*BI (ft if at least BI in (a)) for smooth curve*
- [4]**

**1. Paper 5524**

This was a badly answered question. The majority of answers given by candidates were clearly guesses, and failed to show any relationship between the equations and the diagrams.

**Paper 5526**

This proved to be a challenging enough question with half of the candidate managing in each part to select the correct curve.

Candidates could usually pick out a straight line for the linear equation, but often picked the wrong diagram.

2. Many correctly identified the graph of the first equation. Part (iii) was also known but part (ii) was frequently given incorrectly as B or I.
  
3. Fully correct solutions to this question were seen from approximately 75% of candidates. The most common error seen was the incorrect evaluation of the value of  $y$  when  $x = 4$ . A significant number of candidates used straight line segments rather than a curve to join their plotted points.