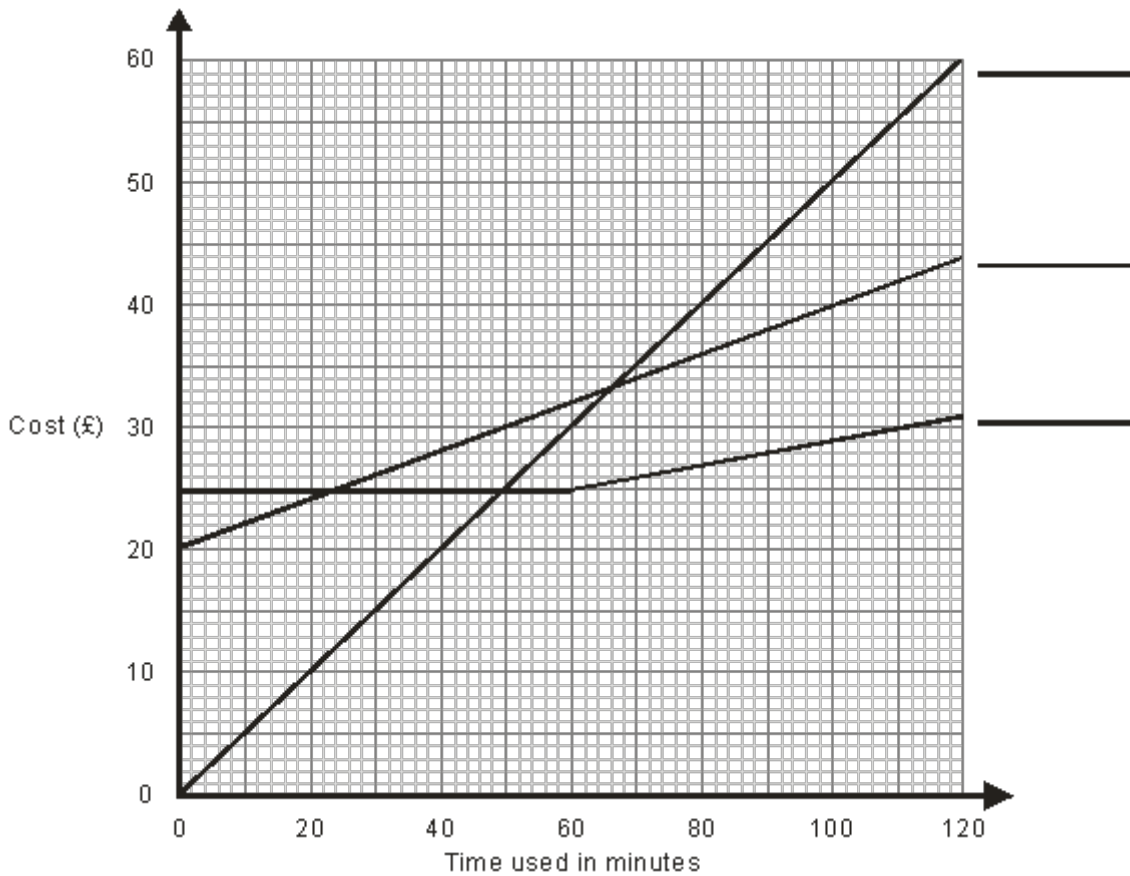


Q1. The graph shows the cost of using a mobile phone for one month for three different tariffs.



The three tariffs are

- Tariff A Rental £20 every minute costs 20p
- Tariff B Pay as you go every minute costs 50p
- Tariff C Rental £25 first 60 minutes free, then each minute costs 10p

(a) Label each line on the graph with the letter of the tariff it represents.

(1)

Jim uses tariff A for 100 minutes in one month.

(b) Find the total cost.

£

(1)

Fiona uses her mobile phone for about 60 minutes each month.

- (c) Explain which tariff would be the cheapest for her to use.
You **must** give the reasons for your answer.

.....
.....
.....

(2)
(Total 4 marks)

M1.

	Working	Answer	Mark	Additional Guidance
(a)		B, A, C	1	B1 cao
(b)		£40	1	B1 cao
(c)		C + reason	2	C2 correct + comparison with the two other tariffs (C1 correct + comparison with one other tariff or line drawn at 60 up from the time axis to intersect at least one line)
				Total for Question: 4 marks

Resource currently unavailable.