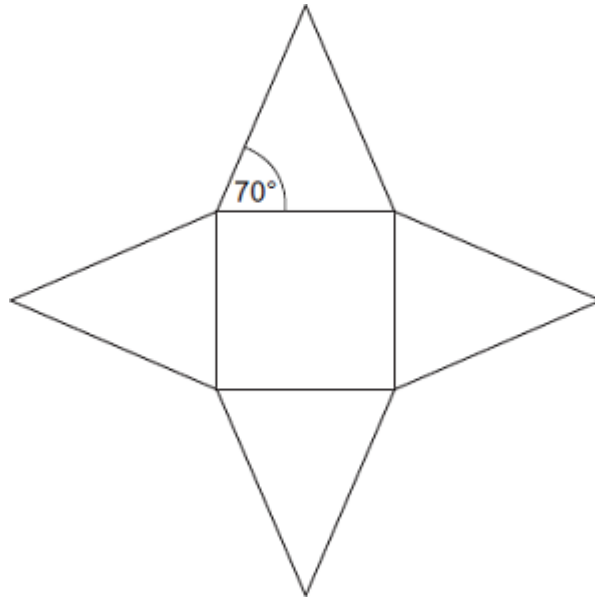


Q1. The diagram shows the net of a square-based pyramid.

Not drawn accurately



The area of the square base is 36 cm^2 .

Work out the area of one triangular face.

.....

.....

.....

.....

.....

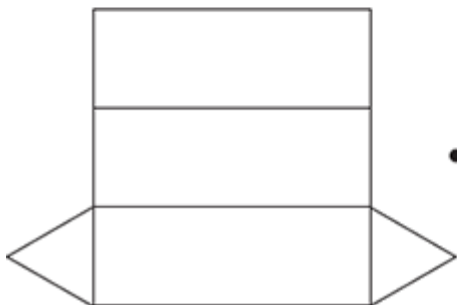
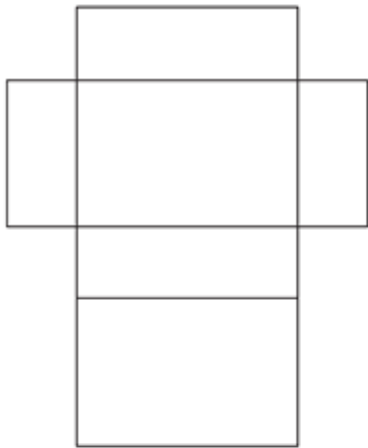
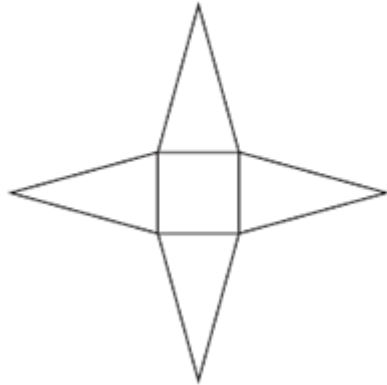
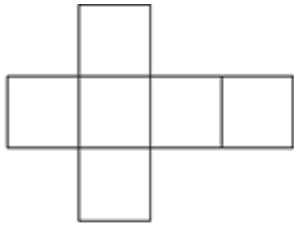
.....

.....

Answer cm^2

(Total 5 marks)

Q2. Match each net with a solid.
The first one has been done.



- Cuboid
- Pyramid
- Cylinder
- Cube
- Triangular prism

(Total 3 marks)