

Q1.

Write 180 g as a fraction of 3 kg

Give your answer in its simplest form.

.....

.....

.....

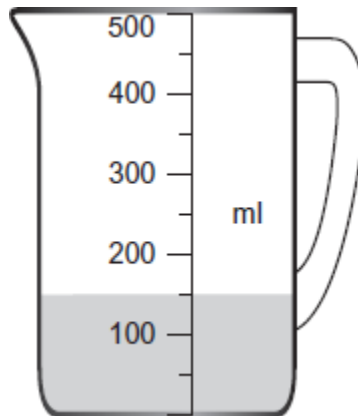
.....

Answer

(Total 2 marks)

Q2.

Some water is shown in a 500 ml measuring jug.



What percentage of the jug is filled with water?

.....

.....

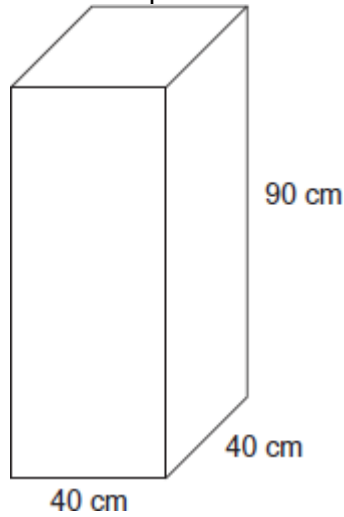
.....

Answer %

(Total 2 marks)

Q3.

The diagram shows a water tank in the shape of a cuboid.



The tank is full of water.

1 litre = 1000 cm³

How many gallons of water are in the tank?

.....

.....

.....

.....

.....

.....

Answer gallons

(Total 4 marks)

Q4.

A machine records the number of cars in a car park.
The table shows some of the data for every hour one morning.

Time	Number of cars
8 am	74
9 am	116
10 am	152

11 am	202
12 noon	

- (a) Between 11 am and 12 noon, 14 cars leave the car park and 37 cars enter the car park.

How many cars are in the car park at 12 noon?

.....

.....

.....

Answer

(1)

- (b) 27 cars leave the car park between 9 am and 10 am

How many cars enter the car park between 9 am and 10 am?

.....

.....

.....

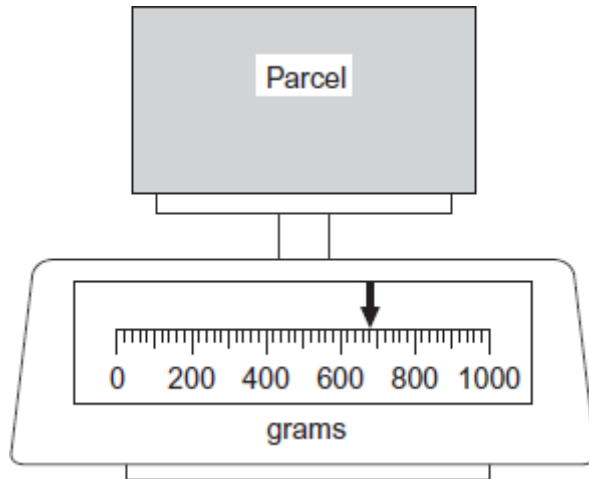
Answer

(2)

(Total 3 marks)

Q5.

- (a) Amir weighs a parcel.



What is the weight of his parcel?

Answer grams

(1)

(b) Beth has a parcel that weighs 1600 grams.

What is 1600 grams in kilograms?

Answer kilograms

(1)

(Total 2 marks)

Q6.(a)

Plum jam Recipe for 8 jars	
Caster Sugar	1.8 kg
Plums	1.2 kg
Water	160 ml
Lemon Juice	100 ml

Jayne wants to make **4 jars** of jam.

How many **grams** of plums does she need?

Answer grams

(1)

(b) Jayne has 860 grams of caster sugar.

How much **more** caster sugar will she need to make **4 jars** of jam?
State the units of your answer.

.....

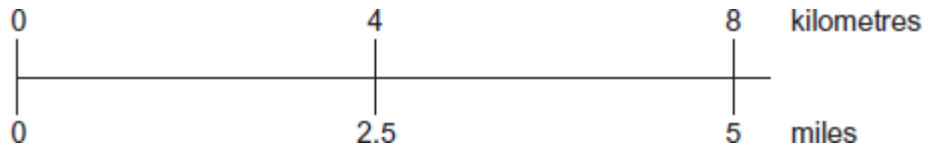
Answer

(2)
(Total 3 marks)

Q7.A car is travelling at 95 km/h
The speed limit on the road is 60 mph

Is the car travelling below the speed limit?
You **must** show your working.

You may use the conversion scale **below** to help you.



.....

Answer

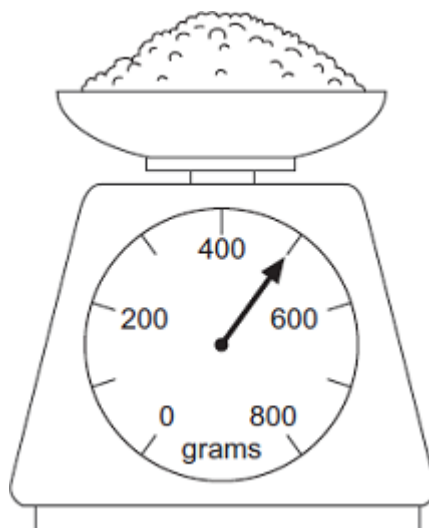
(Total 3 marks)

Q8. Circle the most suitable unit for each of the following.

- | | | | |
|-------------------------------|-------------|-------------|------------|
| The length of a human finger | centimetres | metres | kilometres |
| The amount of water in a bath | millilitres | centilitres | litres |
| The weight of a pencil | grams | kilograms | tonnes |

(Total 3 marks)

Q9. These scales weigh amounts of up to 800 grams.



(a) What is the weight shown by the arrow?

Answer grams

(1)

(b) How can the scales be used to weigh 1.2 kilograms of flour?

.....

.....

.....

(2)

(Total 3 marks)

Q10.

Complete each statement using the correct unit.

Choose from

tonnes kilograms grams litres millilitres

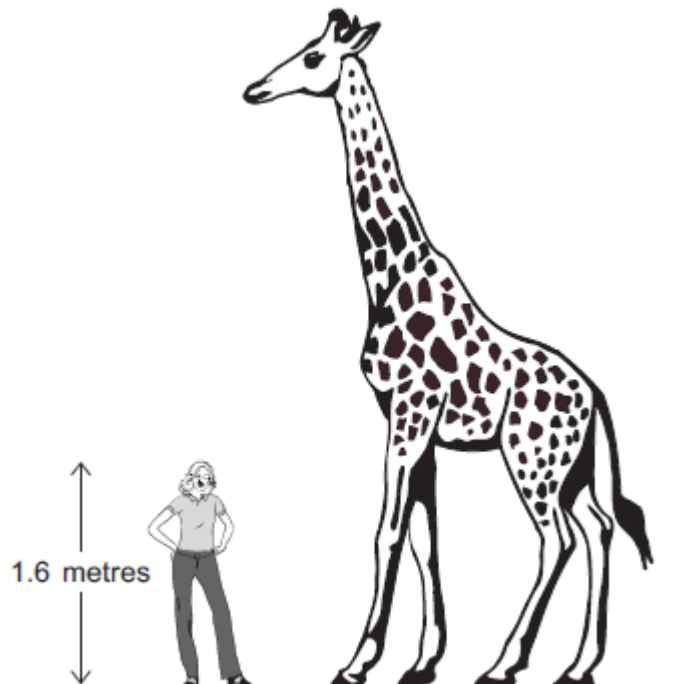
(a) A boy weighs 45 (1)

(b) A packet of crisps weighs 28 (1)

(c) The volume of water in a full bottle is 2 (1)
(Total 3 marks)

Q11.

The diagram shows a woman standing beside a giraffe.



Estimate, in metres, the height of the giraffe.
 You **must** show your working.

.....
.....

Answer metres

(Total 2 marks)

Q12.

Textbooks are stored on three shelves.

Each shelf is 80 centimetres long.

Each textbook is 25 millimetres wide.

Not drawn accurately



Can 100 textbooks be stored on these shelves?

You **must** show your working.

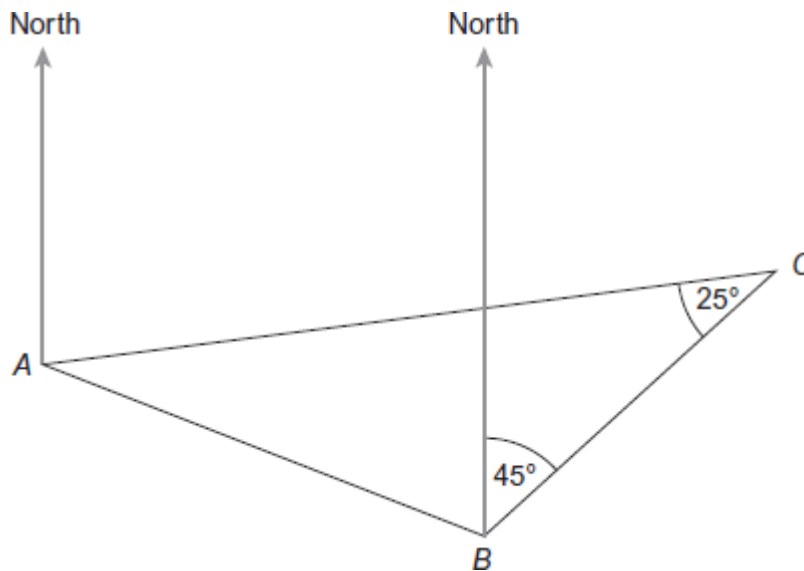
.....
.....
.....
.....
.....
.....
.....
.....

(Total 4 marks)

Q13.

(a) The diagram represents a cross-country course.

Not drawn accurately



Work out the three-figure bearing of C from A.
You **must** show your working.

.....

Answer°

(3)

(b) Steve completes the course in 15 minutes.
He runs at an average speed of 8 miles per hour.

How many miles does he run?

.....

Answer miles

(2)
(Total 5 marks)

Q14.

Vans are used to deliver 3000 sheets of wood to a factory.

Each sheet of wood weighs 800 grams.

Each van can carry a load of 750 kilograms.

Work out the least possible number of vans needed.

.....

.....

.....

.....

.....

Answer

(Total 4 marks)

Q15. Circle the smaller measurement in each pair.

(a) 5 centimetres 40 millimetres **(1)**

(b) 5 grams 40 kilograms **(1)**

(c) 5 litres 40 centilitres **(1)**

(Total 3 marks)

Q16.(a) Choose the most suitable unit to measure the distance from one town to another.

Circle your answer.

centimetres

metres

kilometres

(1)

- (b) Choose the most suitable unit to measure the volume of a dustbin.

Circle your answer.

millilitres

centilitres

litres

(1)

- (c) Choose the most suitable unit to measure the weight of a pencil.

Circle your answer.

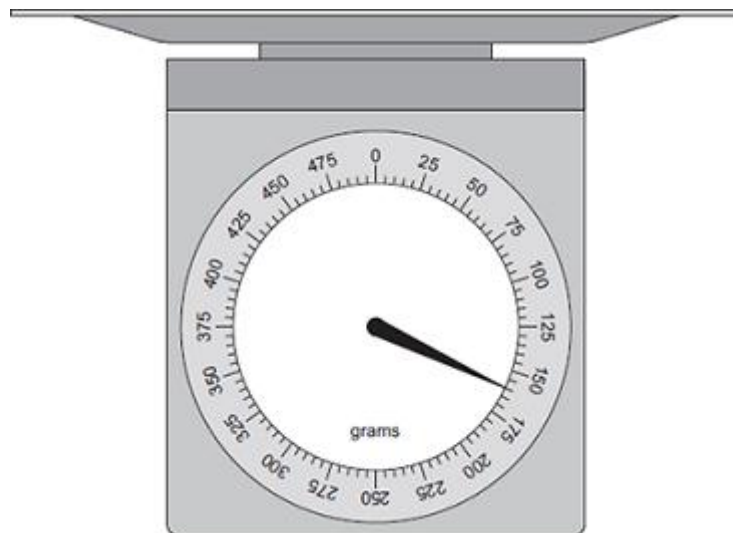
grams

kilograms

tonnes

(1)
(Total 3 marks)

Q17. Ann has scales that weigh **up to** 500 g.



- (a) Ann uses the scales to weigh a letter.

How much does the letter weigh?

Answer g

(1)

- (b) This table shows the cost of sending letters by First Class or by Second Class post.

Weight	First Class	Second Class
1 g to 100 g	£0.60	£0.50
101 g to 250 g	£1.20	£1.10
251 g to 500 g	£1.60	£1.40
501 g to 750 g	£2.30	£1.90

How much will it cost Ann to send her letter by **First Class** post?

Answer £

(1)

- (c) Baz wants to post **two** letters.
The letters weigh 200 g and 400 g.

How much cheaper is it to send both letters by Second Class post than by First Class post?

.....
.....
.....

Answer p

(3)

- (d) Ann's scales only weigh up to 500 g.
She needs to weigh 750 g of flour.

How can she do this using her scales?

.....

.....

.....

.....

(2)
(Total 7 marks)