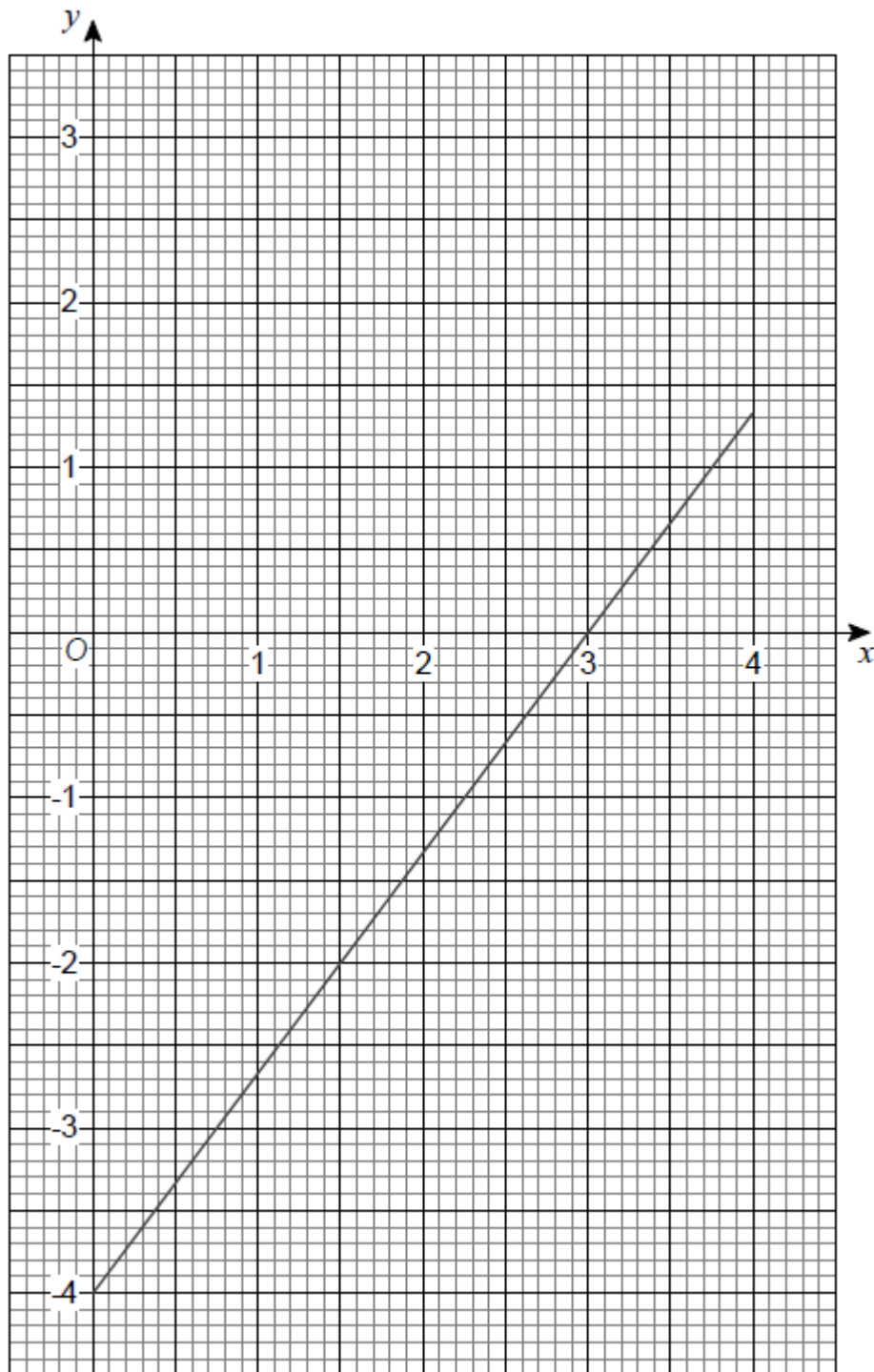


Q1.

Here is the graph of $4x - 3y = 12$ for values of x from 0 to 4



By drawing a second graph on the grid,

work out an approximate solution to the simultaneous equations

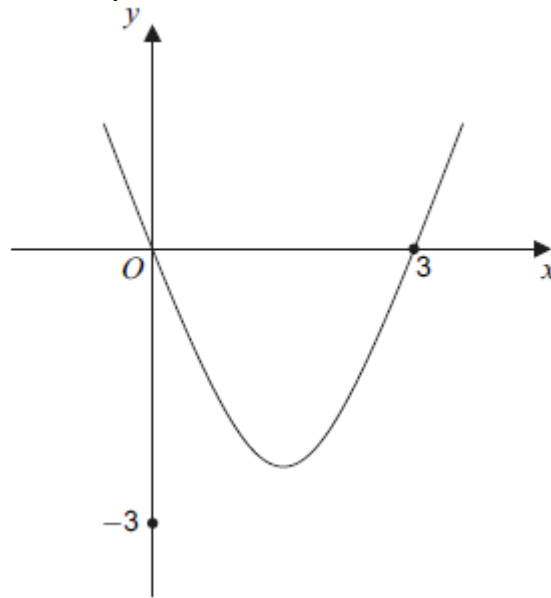
$$4x - 3y = 12 \quad \text{and} \quad 3x + 2y = 6$$

Answer

(Total 3 marks)

Q2.

The diagram shows a sketch of $y = x^2 - 3x$



- (a) Sketch the line $y = \frac{1}{2}(x-3)$ on the diagram.

Mark the value where this line crosses the y-axis.

(2)

- (b) By factorising $x^2 - 3x$, or otherwise, work out the smaller solution of

$$x^2 - 3x = \frac{1}{2}(x-3)$$

.....

.....

.....

.....

.....

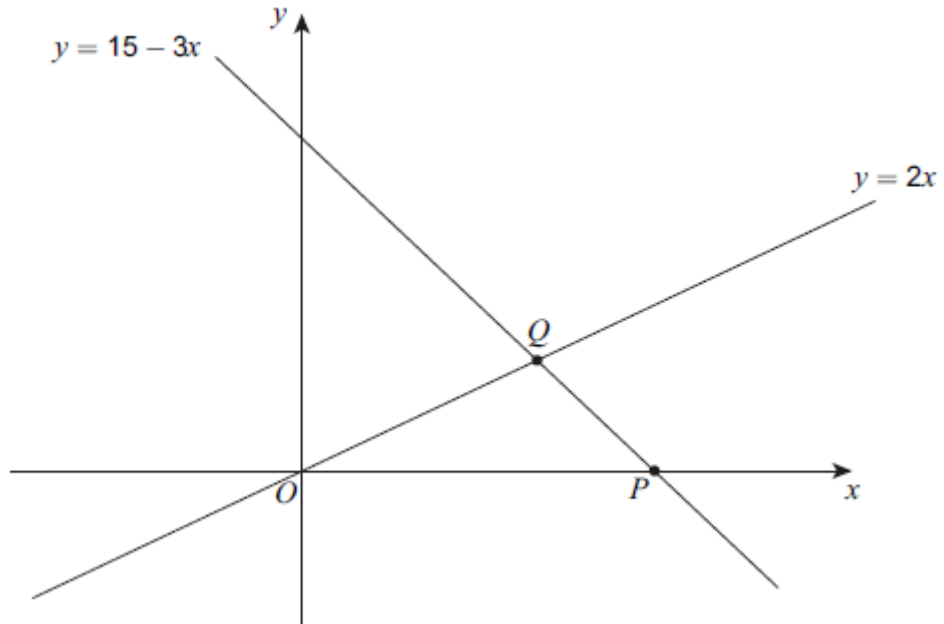
.....

$x =$

(2)
(Total 4 marks)

Q3.

The sketch graphs of two straight lines are shown.



(a) Work out the coordinates of P .

.....

Answer (..... ,

(1)

(b) Work out the coordinates of Q .

.....

.....

.....
.....

Answer (..... ,

(3)

(c) Use your answers to parts (a) and (b) to work out the area of triangle OPQ .

.....
.....

Answer.....

(2)

(Total 6 marks)