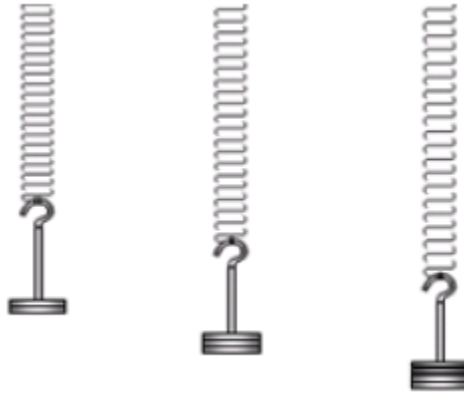


Q1.

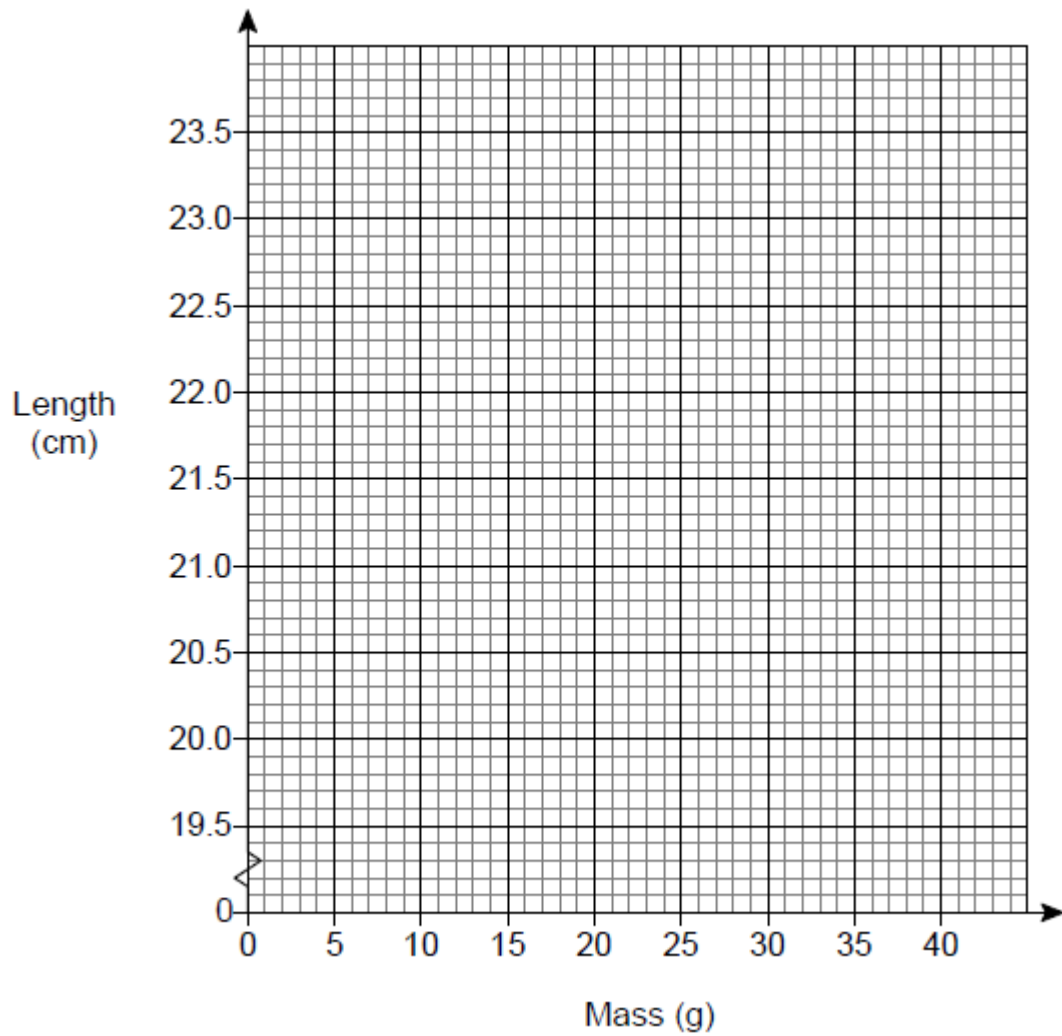
In an experiment, different masses are hung on a spring.



The length of the spring is measured for each mass.

Mass (g)	10	20	30	40
Length (cm)	20.8	21.6	22.4	23.2

(a) Draw a graph to show the length of the spring for masses from 10 g to 40 g



(2)

(b) Estimate the length of the spring with no mass hung on it.

Answer cm

(1)

(c) How much longer is the spring with a 35 g mass than with a 15 g mass?

.....

Answer cm

(2)

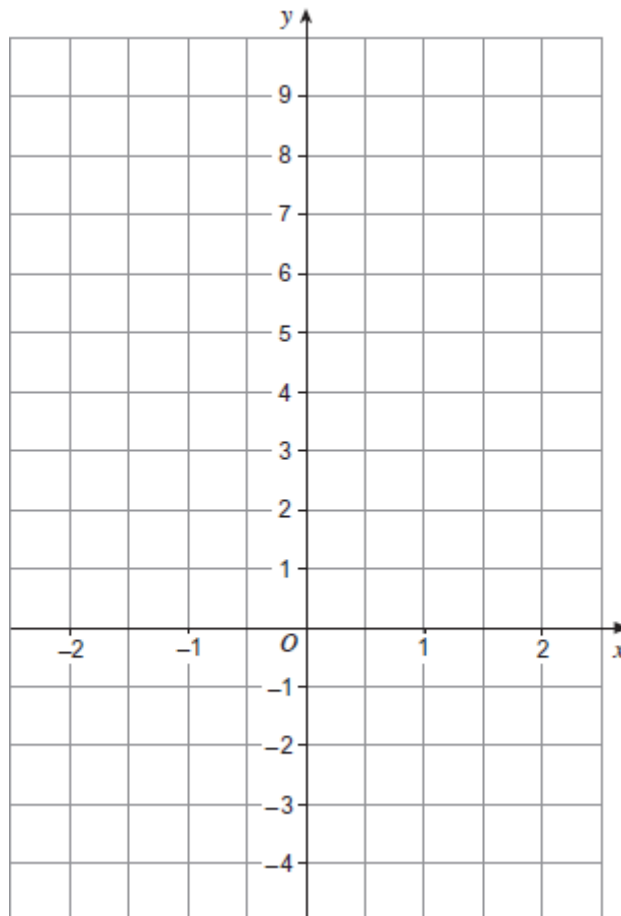
(Total 5 marks)

Q2.(a) Complete the table of values for $y = 3x + 2$

x	-2	-1	0	1	2
y		-1		5	

(2)

(b) On the grid draw the graph of $y = 3x + 2$ for values of x from -2 to 2



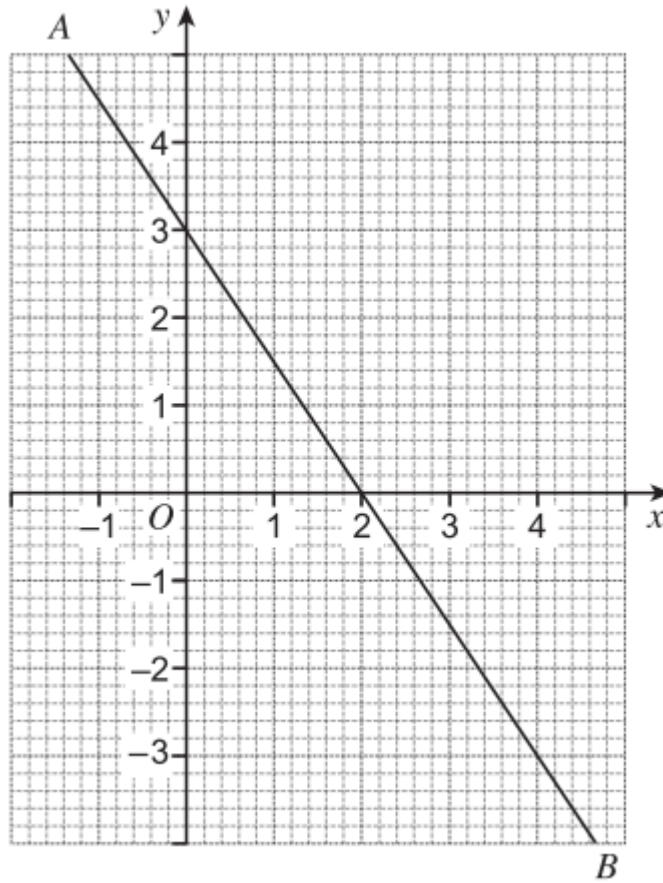
(2)

(c) Work out the gradient of the line $y = 3x + 2$

Answer

(1)
(Total 5 marks)

Q3.(a) Work out the equation of line AB .



.....

.....

.....

Answer

(3)

(b) Work out the equation of the line passing through $(2, -3)$ and parallel to the line $y = 3x + 4$

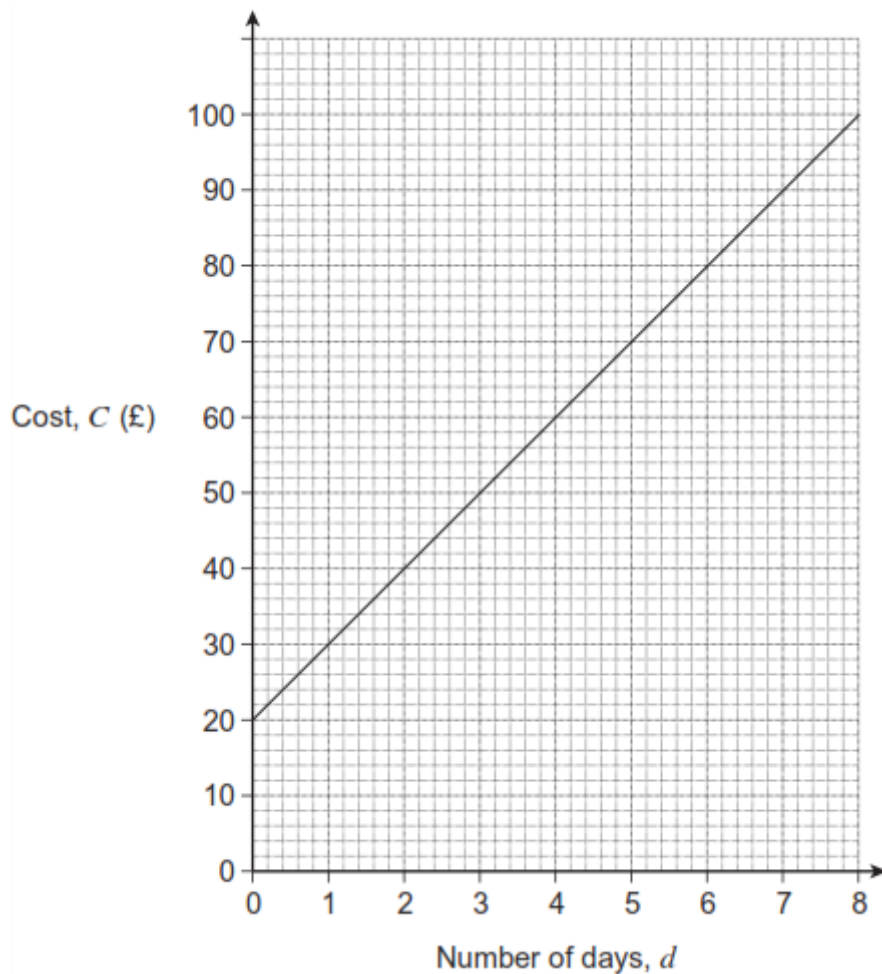
.....

.....

Answer

(2)
(Total 5 marks)

Q4. The graph shows the cost, C (£), of hiring a car for d days from Roy's Rentals.



(a) Circle the correct formula for hiring a car from Roy's Rentals.

$C = 20d + 100$

$C = 10d + 20$

$C = 20d + 10$

$C = 5d + 20$

(1)

(b) The cost of hiring a car from First Cars is given by the formula $C = 8d + 30$

Plot the graph of $C = 8d + 30$ on the grid above.

.....
.....
.....
.....
.....

(2)

(c) Toby wants to hire a car for 7 days.

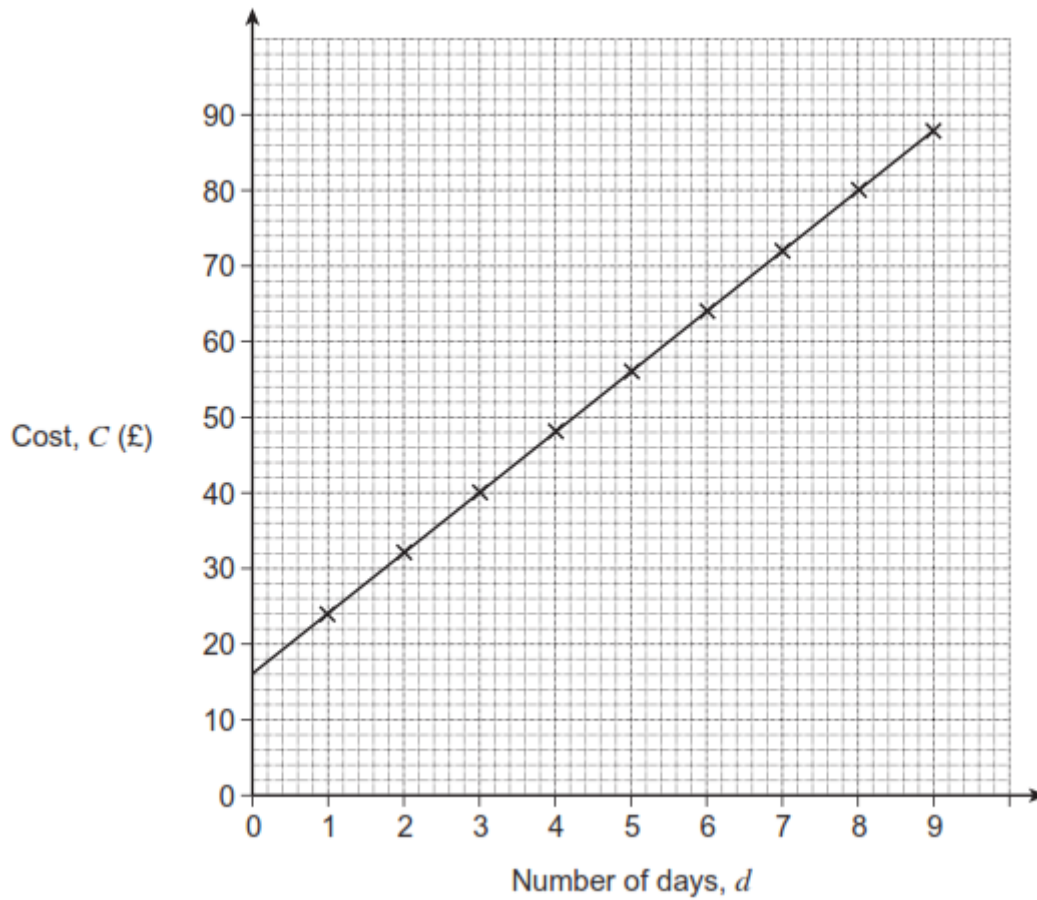
Which of these firms should he use?
Give a reason for your answer.

.....
.....
.....

(2)

(Total 5 marks)

Q5. The graph shows the cost, C (£), of hiring a circular saw from Branch Tool Hire for a number of days, d .



- (a) Circle the correct formula for the cost, C .

$C = 24d$ $C = 8d + 24$ $C = 16d + 8$ $C = 8d + 16$

.....

.....

(1)

- (b) The cost of hiring a circular saw from Woods Tool Hire is given by the formula

$$C = 9d + 11$$

Sam thinks that Woods Tool Hire is always cheaper.

Is this true?

Tick a box.

Yes No

Give reasons for your answer.

.....

.....

.....

.....

.....

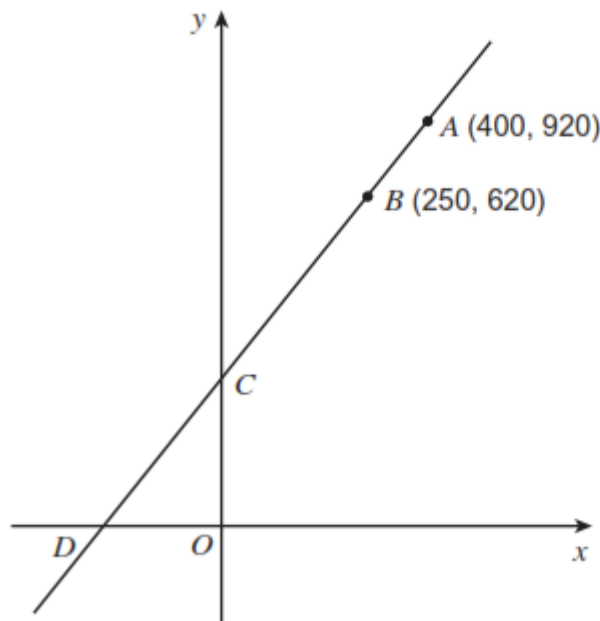
(3)
(Total 4 marks)

Q6. The diagram shows a line $ABCD$.

A is the point $(400, 920)$.

B is the point $(250, 620)$.

The line cuts the y -axis at C and the x -axis at D .



Not drawn accurately

Work out the coordinates of C and D .

.....

.....

.....

.....

.....

.....

.....

.....

Answer C (..... ,)

D (..... ,)

(Total 4 marks)