

Q1.

How many centimetres are there in 3.7 metres?

Circle your answer.

0.037

0.37

37

370

(Total 1 mark)**Q2.**

Complete the table.

Minutes	Hours
30	$\frac{1}{2}$
40	
	$2\frac{1}{4}$

(Total 2 marks)**Q3.**

Textbooks are stored on two shelves.

Each shelf is 0.72 metres long.

Each textbook is 30 millimetres wide.

Not drawn accurately



Can 50 textbooks be stored on these shelves?

You **must** show your working.

.....

.....

.....

.....

Answer

(Total 3 marks)

Q4.

Sam wants to buy a camera for £345

He has already saved £96

Each week

his pay is £80

he saves 30% of this pay.

How many **more** weeks must he save?

.....

.....

.....

.....
.....

Answer weeks

(Total 4 marks)

Q5.

Mr Jones works for five days each week.

If he uses his car to travel to work,

each day he drives a total distance of 24.2 miles
his car travels 32.3 miles per gallon of petrol
petrol costs £1.27 per litre.

If he uses the bus to travel to work, he can buy a weekly ticket for £19.50

Use 1 gallon = 4.5 litres

Is it cheaper if he uses his car or the bus to travel to work?

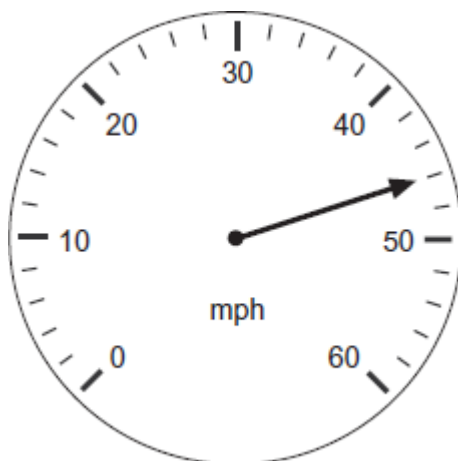
You **must** show your working.

.....
.....
.....
.....
.....
.....
.....
.....
.....
.....
.....
.....
.....
.....
.....

Answer

(Total 5 marks)

Q6.(a) Write down the speed shown on the speedometer.



Answer mph

(1)

(b) A car travels for 1 hour 30 minutes at an average speed of 28 mph.

How many miles does the car travel?

.....

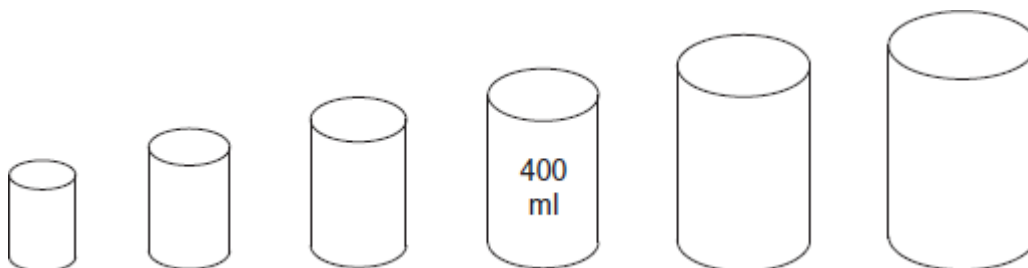
Answer miles

(3)

(Total 4 marks)

Q7.A company makes tins in six different sizes.

For each increase in size, the capacity of the tin **doubles**.



(a) Work out the capacity of the smallest tin.

.....

Answer ml

(2)

- (b) Work out the capacity of the largest tin.
Give your answer in litres.

.....

.....

Answer litres

(2)

(Total 4 marks)

Q8.A scooter is travelling at a constant speed of 75 kilometres per hour.

- (a) The scooter travels at this speed for 20 minutes.

How many kilometres has the scooter travelled in this time?

.....

.....

Answer km

(2)

- (b) The speed limit is 50 **miles** per hour.

Is the scooter travelling faster or slower than the speed limit?

Faster

Slower

You **must** show your working.

.....

.....

.....

(2)
(Total 4 marks)

Q9.(a) One litre of fuel weighs 737 grams.

How much does 70 litres of fuel weigh?
Give your answer in kilograms.

.....
.....
.....

Answer kg

(3)

(b) Fuel flows through a pump at 30 litres per minute.

How long does it take to put 70 litres in a tank?
Give your answer in minutes and seconds.

.....
.....
.....

Answer minutes seconds

(3)
(Total 6 marks)

Q10.A builder has a pipe that is 2 metres long.

He wants to cut lengths of 80 cm, 45 cm and 70 cm.

Does he have enough pipe?
You **must** show your working.

.....
.....

.....

(Total 3 marks)

Q11. You are given 2.2 pounds = 1 kilogram
 1 kilogram = 1000 grams

Matthew's grandmother asked him to buy $\frac{1}{2}$ pound of cherries.

Cherries are sold in 100 g, 250 g and 500 g packs.

Which pack should he buy to get the nearest amount?
 You **must** show your working.

.....

.....

.....

.....

.....

Answer g

(Total 4 marks)

Q12. The scale on a map is 1 : 500 000

Two towns are 8 cm apart on the map.

Work out the actual distance between the towns.
 Give your answer in kilometres.

.....

.....

.....

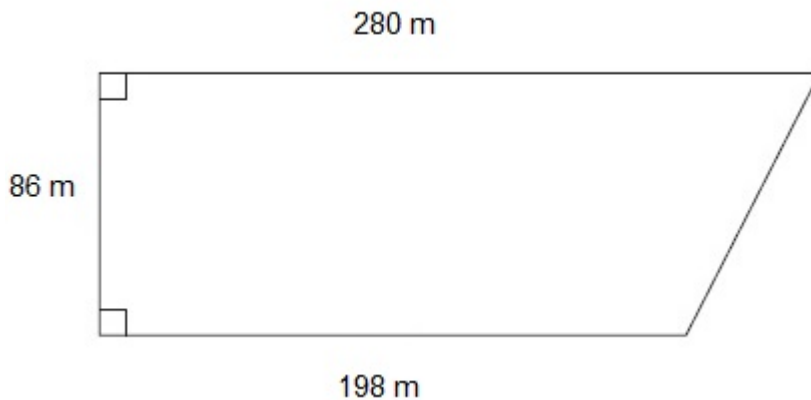
.....

Answer km

(Total 3 marks)

Q13. The diagram shows a field.

Not drawn accurately



(a) Work out the area of the field.

.....

.....

.....

Answer m²

(2)

(b) 1 acre = 4047 square metres

A farmer keeps cows in the field.
He is allowed 7 cows per acre.

Work out the maximum number of cows he is allowed to put in the field.

.....

.....

.....

.....

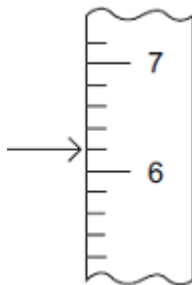
.....

.....

Answer

(4)
(Total 6 marks)

Q14.(a) Robin says that the arrow is pointing to 6.1



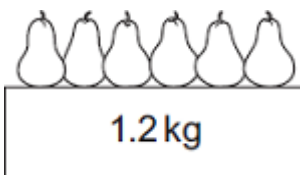
He is **not** correct.

What is his mistake?

.....
.....

(1)

(b) Six pears of equal size are weighed on a digital scale.



Estimate the weight of one pear.
Give your answer in grams.

.....
.....
.....

Answer grams

(3)
(Total 4 marks)

