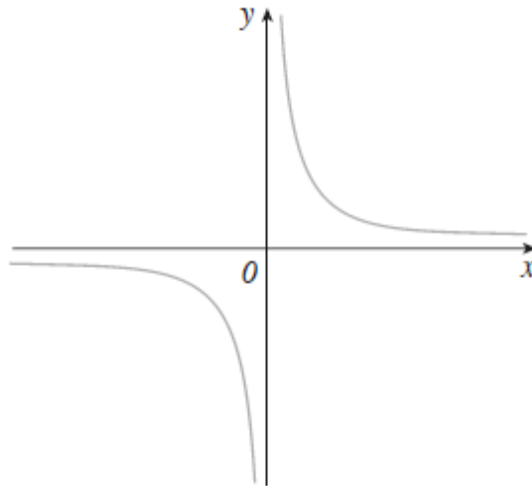


Non-Calculator

Q1.

- (a) Circle a possible equation for the graph shown below.



$y = x^3$

$y = \frac{1}{x}$

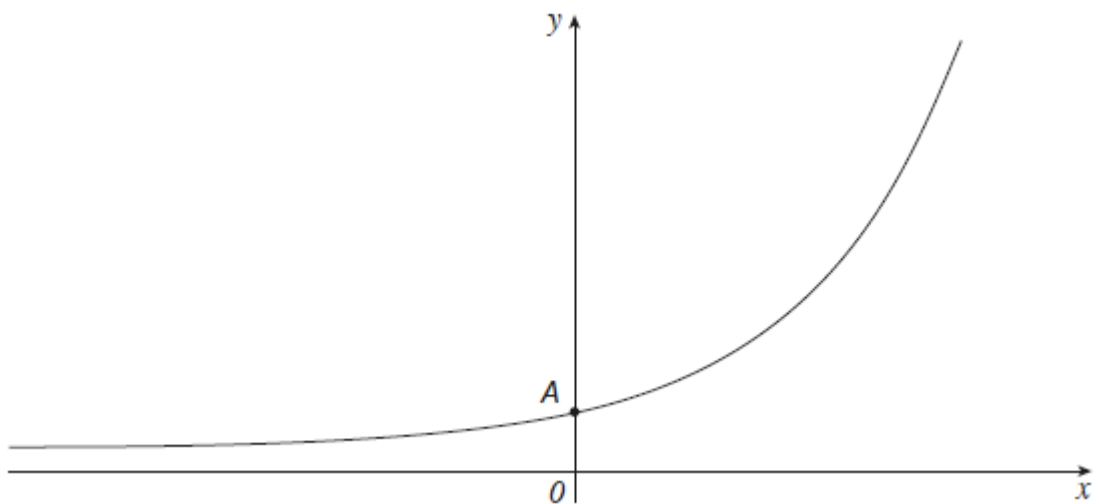
$y = \cos x$

$y = \sin x$

(1)

- (b) This is the graph of $y = 2^x$

Write down the co-ordinates of A.



Answer (_____ , _____)

(1)

(Total 2 marks)