

Write your name here

Surname

Other names

Pearson Edexcel
Level 1/Level 2 GCSE (9-1)

Centre Number

--	--	--	--	--

Candidate Number

--	--	--	--

Mathematics

Paper 3 (Calculator)

Foundation Tier

Tuesday 12 June 2018 – Morning

Time: 1 hour 30 minutes

Paper Reference

1MA1/3F

You must have: Ruler graduated in centimetres and millimetres, protractor, pair of compasses, pen, HB pencil, eraser, calculator. Tracing paper may be used.

Total Marks

Instructions

- Use **black** ink or ball-point pen.
- **Fill in the boxes** at the top of this page with your name, centre number and candidate number.
- Answer **all** questions.
- Answer the questions in the spaces provided – *there may be more space than you need.*
- You must **show all your working**.
- Diagrams are **NOT** accurately drawn, unless otherwise indicated.
- **Calculators may be used.**
- If your calculator does not have a π button, take the value of π to be 3.142 unless the question instructs otherwise.



Information

- The total mark for this paper is 80
- The marks for **each** question are shown in brackets – *use this as a guide as to how much time to spend on each question.*

Advice

- Read each question carefully before you start to answer it.
- Keep an eye on the time.
- Try to answer every question.
- Check your answers if you have time at the end.

Turn over ►

P48862A

©2018 Pearson Education Ltd.

6/7/7/7/8/8/7/1/



Pearson

Answer ALL questions.

Write your answers in the spaces provided.

You must write down all the stages in your working.

- 1 Write $\frac{9}{10}$ as a decimal.

.....

(Total for Question 1 is 1 mark)

- 2 Write 0.3 as a percentage.

.....%

(Total for Question 2 is 1 mark)

- 3 Write the number 2538 correct to the nearest hundred.

.....

(Total for Question 3 is 1 mark)

- 4 Here are the first 4 terms of a sequence.

2 9 16 23

- (a) (i) Write down the next term in the sequence.

.....

(1)

- (ii) Explain how you got your answer.

.....

(1)

- (b) Work out the 10th term of the sequence.

.....

(1)

(Total for Question 4 is 3 marks)

DO NOT WRITE IN THIS AREA

DO NOT WRITE IN THIS AREA

DO NOT WRITE IN THIS AREA



5 Here are four digits.

7 3 4 9

(a) Use three of these digits to write down the largest possible 3-digit number.

.....
(1)

(b) Here are four different digits.

8 2 1 6

Put one of these digits in each box to give the smallest possible answer to the sum.
You must use each digit only once.

$$\begin{array}{|c|} \hline \\ \hline \end{array} \begin{array}{|c|} \hline \\ \hline \end{array} + \begin{array}{|c|} \hline \\ \hline \end{array} \begin{array}{|c|} \hline \\ \hline \end{array}$$

(1)

(Total for Question 5 is 2 marks)

6 Write down all the factors of 30

.....
(Total for Question 6 is 2 marks)

DO NOT WRITE IN THIS AREA

DO NOT WRITE IN THIS AREA

DO NOT WRITE IN THIS AREA



- 7 David has twice as many cousins as Becky.
Becky has twice as many cousins as Nishat.

Nishat has 6 cousins.

How many cousins does David have?

.....
(Total for Question 7 is 2 marks)

- 8 (a) Find the value of $\sqrt{1.44 \times 3.61}$

.....
(1)

- (b) Find the value of $(3.54 - 0.96)^2 - 4.096$

.....
(2)

(Total for Question 8 is 3 marks)

DO NOT WRITE IN THIS AREA

DO NOT WRITE IN THIS AREA

DO NOT WRITE IN THIS AREA



- 9 This is part of a bus timetable between Bury and Manchester.

Bury	08 25	08 55	09 15	09 30	09 45	10 05
Whitefield	08 34	09 04	09 24	09 39	09 54	10 14
Heaton Park	08 46	09 16	09 36	09 51	10 06	10 27
Cheetham	08 56	09 26	09 46	10 01	10 16	10 37
Manchester	09 05	09 35	09 55	10 10	10 25	10 48

- (a) How many minutes should the 08 25 bus take to go from Bury to Manchester?

..... minutes
(1)

Daniel goes from Whitefield to Manchester by bus.

Daniel takes 17 minutes to get from his house to the bus stop in Whitefield.
He takes 15 minutes to get from the bus stop in Manchester to work.

Daniel has to get to work by 10 am.
He leaves his house at 8.45 am.

- (b) Does Daniel get to work by 10 am?
You must show all your working.

(3)

(Total for Question 9 is 4 marks)



10 Bronwin works in a restaurant.

The table gives her rates of pay.

Day	Rate of pay
Monday to Friday	£8.40 per hour
Weekend	£11.20 per hour

Bronwin worked for a total of 20 hours last week.
She worked 8 of these 20 hours at the weekend.

Show that Bronwin was paid less than £200 last week.

(Total for Question 10 is 3 marks)

DO NOT WRITE IN THIS AREA

DO NOT WRITE IN THIS AREA

DO NOT WRITE IN THIS AREA



- 11 Last year the cost of a season ticket for a football club was £560
This year the cost of a season ticket for the club has been increased to £600

Write down the increase in the cost of a season ticket as a fraction of last year's cost.

.....
(Total for Question 11 is 2 marks)



12 The diagram shows a scale drawing of a tennis court.



DO NOT WRITE IN THIS AREA

DO NOT WRITE IN THIS AREA

DO NOT WRITE IN THIS AREA

The scale of the drawing is 1 : 200

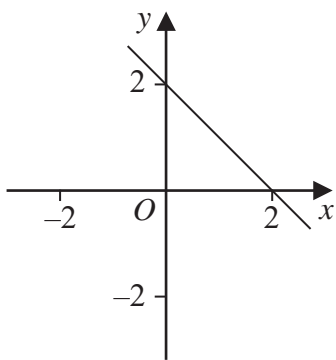
Work out the perimeter of the real tennis court.
Give your answer in metres.

..... metres

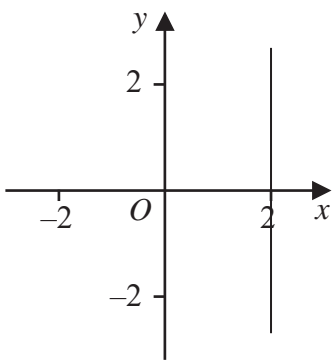
(Total for Question 12 is 5 marks)



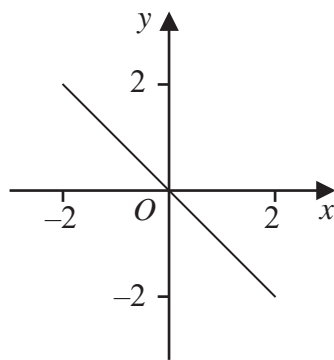
13 Here are six straight line graphs.



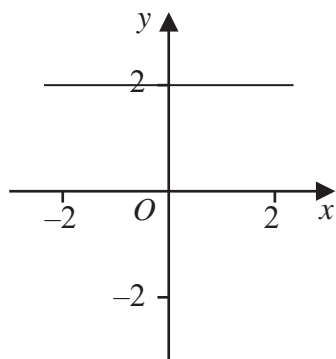
Graph A



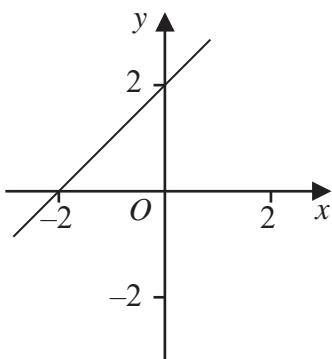
Graph B



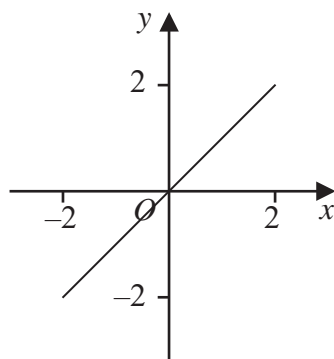
Graph C



Graph D



Graph E



Graph F

Match each equation in the table to the correct graph.
Write the letter of the graph in the table.

Equation	Graph
$y = 2$	
$y = x$	
$x + y = 2$	

(Total for Question 13 is 2 marks)

DO NOT WRITE IN THIS AREA

DO NOT WRITE IN THIS AREA

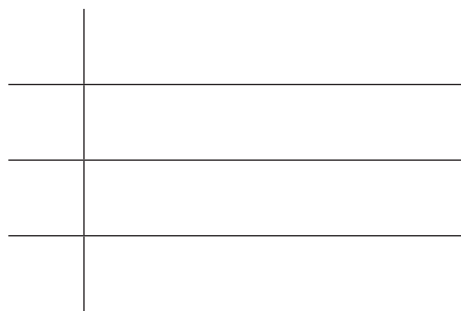
DO NOT WRITE IN THIS AREA



14 Here are the marks 20 students got in a French test.

76	82	84	69	80	64	70	81	75	91
87	67	80	70	94	76	81	69	71	77

(a) Show this information in a stem and leaf diagram.



(3)

One of these students is going to be chosen at random.

The pass mark in the French test is 71

Omar writes,

The probability that this student failed the French test is $\frac{1}{4}$

Omar is wrong.

(b) Explain why.

(2)

(Total for Question 14 is 5 marks)

DO NOT WRITE IN THIS AREA

DO NOT WRITE IN THIS AREA

DO NOT WRITE IN THIS AREA



15 Jenny is asked to find the value of $12 - 2 \times 4$

Here is her working.

$$12 - 2 \times 4 = 10 \times 4 = 40$$

Jenny's answer is wrong.

(a) Explain what Jenny has done wrong.

(1)

Rehan is asked to find the range of the numbers 3 1 8 7 5

Here is his working.

$$\text{Range} = 5 - 3 = 2$$

This is wrong.

(b) Explain why.

(1)

(Total for Question 15 is 2 marks)

DO NOT WRITE IN THIS AREA

DO NOT WRITE IN THIS AREA

DO NOT WRITE IN THIS AREA



16 Alan, Bispah and Chan share a sum of money.

Alan gets $\frac{1}{8}$ of the money.

Bispah gets $\frac{1}{2}$ of the money.

Chan gets the rest of the money.

Alan gets £2.50

(a) Work out how much money Bispah gets.

£.....
(2)

(b) Find the ratio

amount of money Alan gets : amount of money Chan gets

Give your answer in the form $a:b$ where a and b are whole numbers.

.....
(3)

(Total for Question 16 is 5 marks)

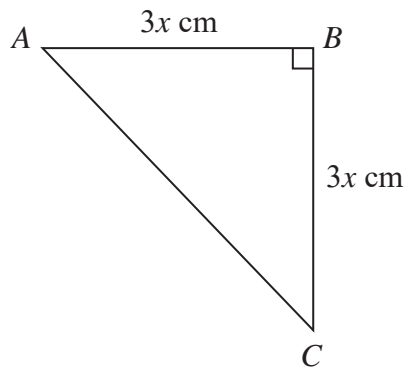
DO NOT WRITE IN THIS AREA

DO NOT WRITE IN THIS AREA

DO NOT WRITE IN THIS AREA



17 ABC is an isosceles right-angled triangle.



The area of the triangle is 162 cm^2

Work out the value of x .

$$x = \dots\dots\dots$$

(Total for Question 17 is 3 marks)

18 Work out the value of $\frac{2.645 \times 10^9}{1.15 \times 10^3}$

Give your answer in standard form.

.....

(Total for Question 18 is 2 marks)

DO NOT WRITE IN THIS AREA

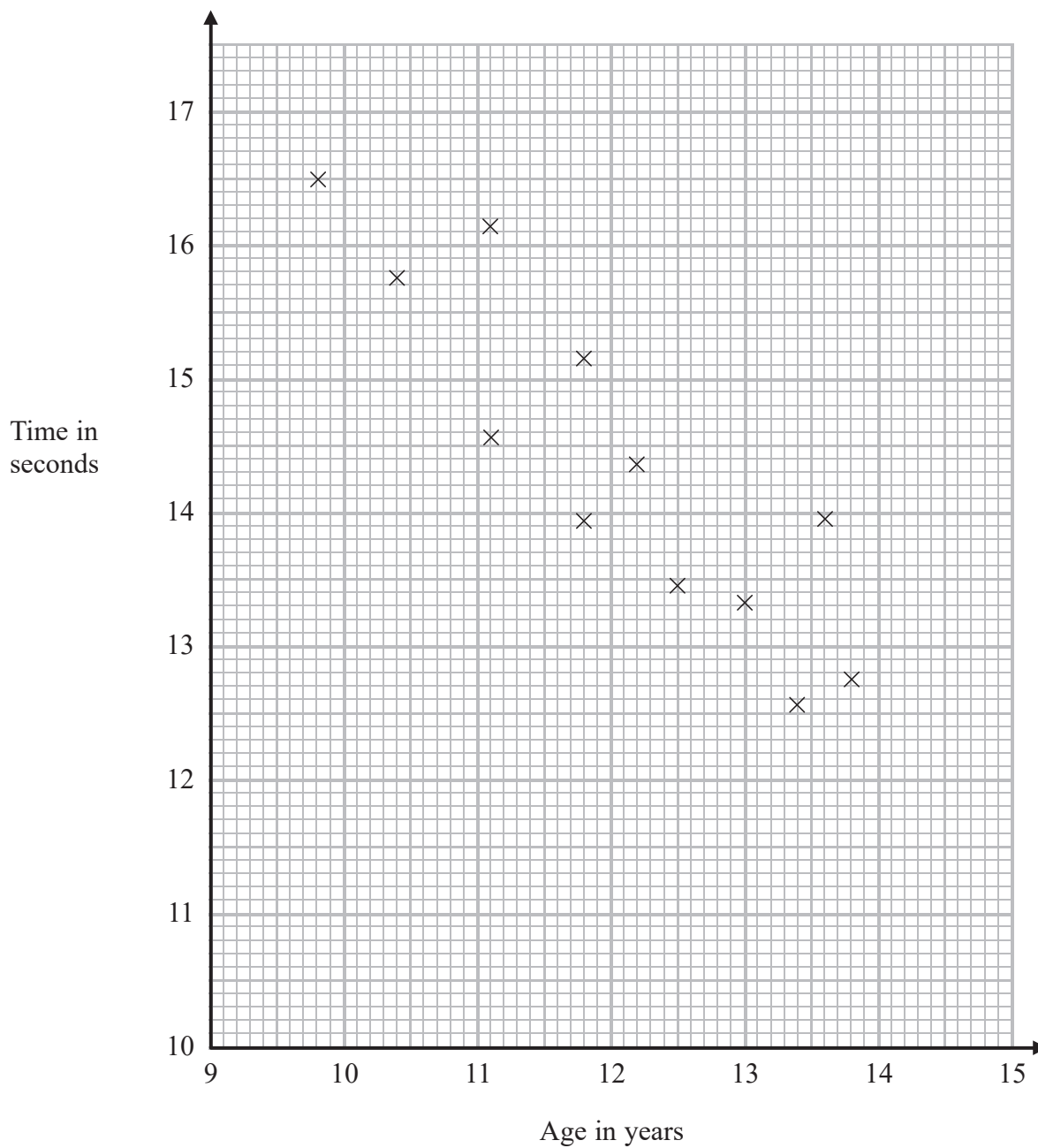
DO NOT WRITE IN THIS AREA

DO NOT WRITE IN THIS AREA



19 The scatter diagram shows information about 12 girls.

It shows the age of each girl and the best time she takes to run 100 metres.



(a) Write down the type of correlation.

(1)

DO NOT WRITE IN THIS AREA

DO NOT WRITE IN THIS AREA

DO NOT WRITE IN THIS AREA



DO NOT WRITE IN THIS AREA

Kristina is 11 years old.
Her best time to run 100 metres is 12 seconds.

The point representing this information would be an outlier on the scatter diagram.

(b) Explain why.

(1)

Debbie is 15 years old.

Debbie says,

“The scatter diagram shows I should take less than 12 seconds to run 100 metres.”

(c) Comment on what Debbie says.

(1)

(Total for Question 19 is 3 marks)

20 Expand and simplify $5(p + 3) - 2(1 - 2p)$

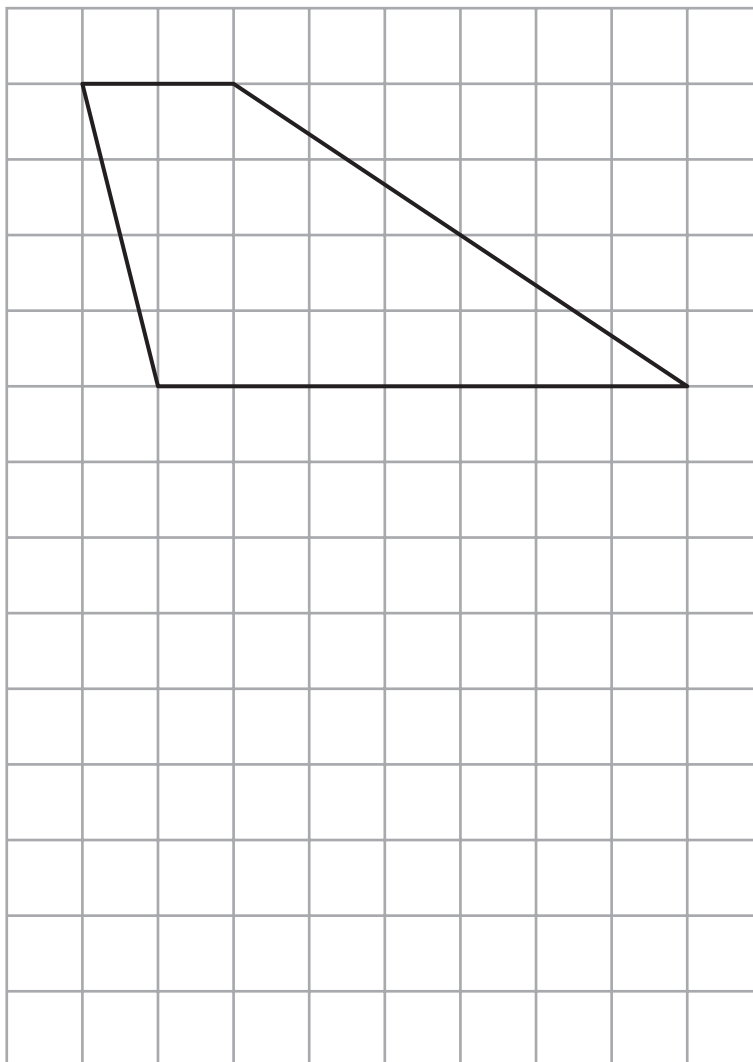
(Total for Question 20 is 2 marks)

DO NOT WRITE IN THIS AREA

DO NOT WRITE IN THIS AREA



21 Here is a trapezium drawn on a centimetre grid.



DO NOT WRITE IN THIS AREA

DO NOT WRITE IN THIS AREA

DO NOT WRITE IN THIS AREA

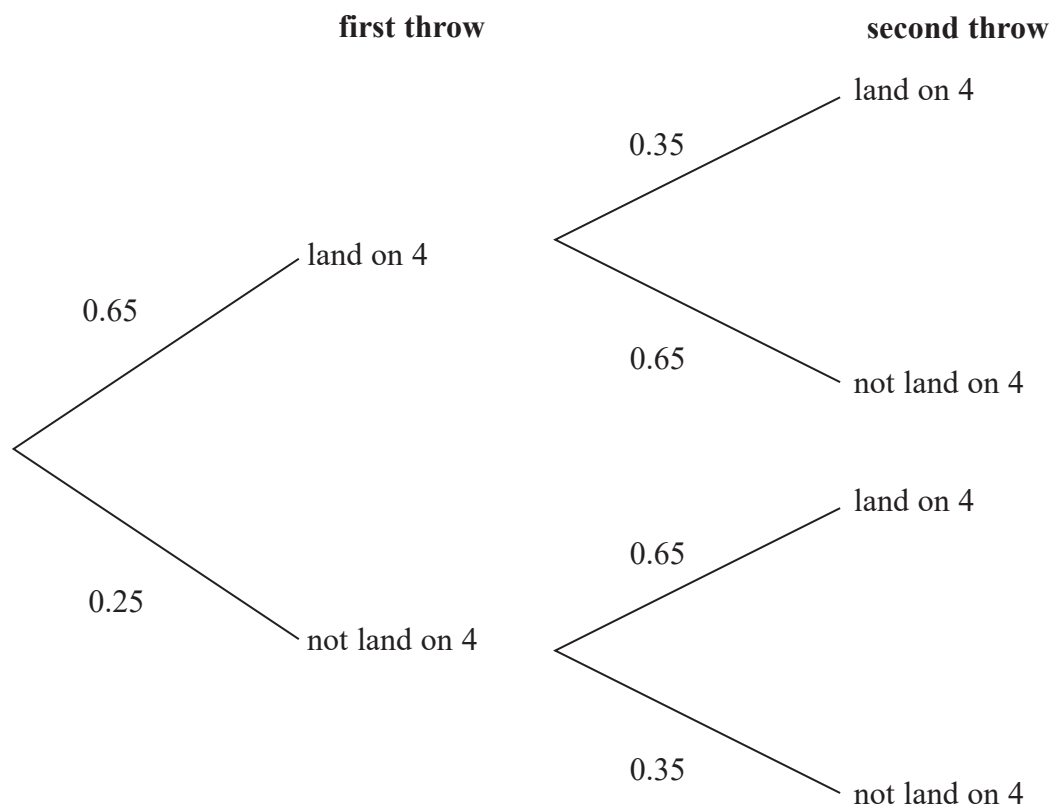
On the grid, draw a triangle equal in area to this trapezium.

(Total for Question 21 is 2 marks)



- 22 When a biased 6-sided dice is thrown once, the probability that it will land on 4 is 0.65
The biased dice is thrown twice.

Amir draws this probability tree diagram.
The diagram is **not** correct.



Write down **two** things that are wrong with the probability tree diagram.

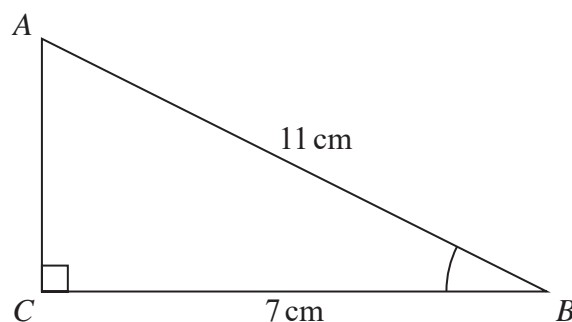
1.....

2.....

(Total for Question 22 is 2 marks)



23 ABC is a right-angled triangle.



- (a) Work out the size of angle ABC .
Give your answer correct to 1 decimal place.

.....
(2)

The length of the side AB is reduced by 1 cm .

The length of the side BC is still 7 cm .
Angle ACB is still 90°

- (b) Will the value of $\cos ABC$ increase or decrease?
You must give a reason for your answer.

.....
(1)

(Total for Question 23 is 3 marks)

DO NOT WRITE IN THIS AREA

DO NOT WRITE IN THIS AREA

DO NOT WRITE IN THIS AREA



- 24 There are some counters in a bag.
The counters are red or white or blue or yellow.

Bob is going to take at random a counter from the bag.

The table shows each of the probabilities that the counter will be blue or will be yellow.

Colour	red	white	blue	yellow
Probability			0.45	0.25

There are 18 blue counters in the bag.

The probability that the counter Bob takes will be red is twice the probability that the counter will be white.

- (a) Work out the number of red counters in the bag.

.....
(4)

A marble is going to be taken at random from a box of marbles.
The probability that the marble will be silver is 0.5

There must be an even number of marbles in the box.

- (b) Explain why.

.....
.....
(1)

(Total for Question 24 is 5 marks)



25 Solve $\frac{5-x}{2} = 2x-7$

$x = \dots\dots\dots$

(Total for Question 25 is 3 marks)

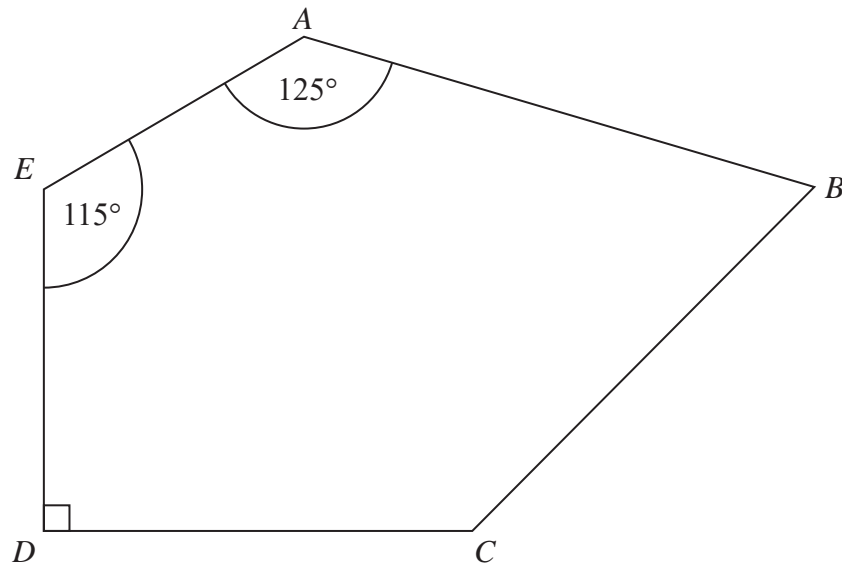
DO NOT WRITE IN THIS AREA

DO NOT WRITE IN THIS AREA

DO NOT WRITE IN THIS AREA



26 $ABCDE$ is a pentagon.



Angle $BCD = 2 \times$ angle ABC

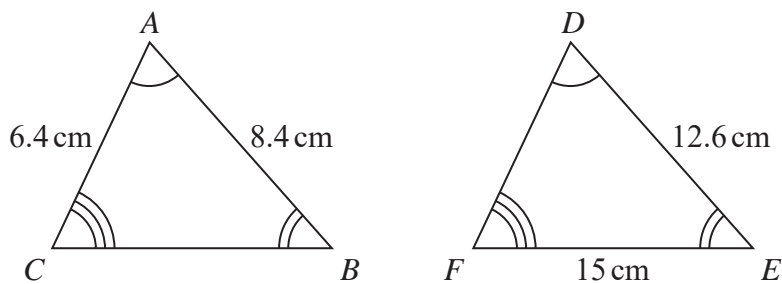
Work out the size of angle BCD .
You must show all your working.

(Total for Question 26 is 5 marks)



P 4 8 8 6 2 A 0 2 1 2 4

27 Triangle ABC and triangle DEF are similar.



(a) Work out the length of DF .

..... cm
(2)

(b) Work out the length of CB .

..... cm
(2)

(Total for Question 27 is 4 marks)

DO NOT WRITE IN THIS AREA

DO NOT WRITE IN THIS AREA

DO NOT WRITE IN THIS AREA



28 Make g the subject of the formula $T = \sqrt{\frac{g + 6}{2}}$

DO NOT WRITE IN THIS AREA

DO NOT WRITE IN THIS AREA

DO NOT WRITE IN THIS AREA

.....
(Total for Question 28 is 3 marks)

TOTAL FOR PAPER IS 80 MARKS



DO NOT WRITE IN THIS AREA

DO NOT WRITE IN THIS AREA

DO NOT WRITE IN THIS AREA

BLANK PAGE

