

DO NOT WRITE IN THIS AREA

DO NOT WRITE IN THIS AREA

DO NOT WRITE IN THIS AREA

1.

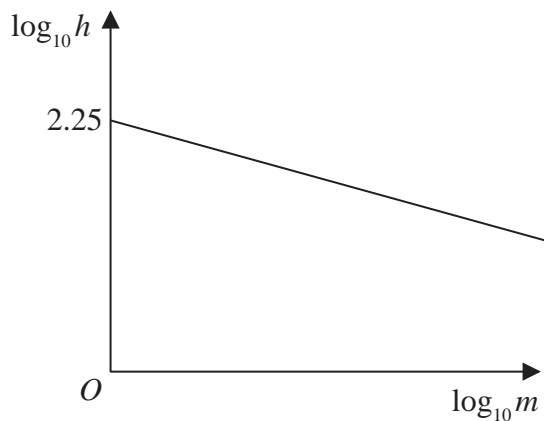


Figure 2

The resting heart rate,  $h$ , of a mammal, measured in beats per minute, is modelled by the equation

$$h = pm^q$$

where  $p$  and  $q$  are constants and  $m$  is the mass of the mammal measured in kg.

Figure 2 illustrates the linear relationship between  $\log_{10} h$  and  $\log_{10} m$

The line meets the vertical  $\log_{10} h$  axis at 2.25 and has a gradient of  $-0.235$

(a) Find, to 3 significant figures, the value of  $p$  and the value of  $q$ . (3)

A particular mammal has a mass of 5 kg and a resting heart rate of 119 beats per minute.

(b) Comment on the suitability of the model for this mammal. (3)

(c) With reference to the model, interpret the value of the constant  $p$ . (1)

---

---

---

---

---

---

---

---

---

---

---

---

---

---

---

---

---

---

---

---

---

---

---



2. The mass,  $A$  kg, of algae in a small pond, is modelled by the equation

$$A = pq^t$$

where  $p$  and  $q$  are constants and  $t$  is the number of weeks after the mass of algae was first recorded.

Data recorded indicates that there is a linear relationship between  $t$  and  $\log_{10} A$  given by the equation

$$\log_{10} A = 0.03t + 0.5$$

- (a) Use this relationship to find a complete equation for the model in the form

$$A = pq^t$$

giving the value of  $p$  and the value of  $q$  each to 4 significant figures.

(4)

- (b) With reference to the model, interpret

(i) the value of the constant  $p$ ,

(ii) the value of the constant  $q$ .

(2)

- (c) Find, according to the model,

(i) the mass of algae in the pond when  $t = 8$ , giving your answer to the nearest 0.5 kg,

(ii) the number of weeks it takes for the mass of algae in the pond to reach 4 kg.

(3)

- (d) State one reason why this may not be a realistic model in the long term.

(1)

---

---

---

---

---

---

---

---

---

---

---

---

---

---

---

---

---

---

---

---

---

---

---

---

DO NOT WRITE IN THIS AREA

DO NOT WRITE IN THIS AREA

DO NOT WRITE IN THIS AREA



3. (a) Given that  $p = \log_3 x$ , where  $x > 0$ , find in simplest form in terms of  $p$ ,

(i)  $\log_3\left(\frac{x}{9}\right)$

(ii)  $\log_3(\sqrt{x})$

(2)

(b) Hence, or otherwise, solve

$$2\log_3\left(\frac{x}{9}\right) + 3\log_3(\sqrt{x}) = -11$$

giving your answer as a simplified fraction.

**Solutions relying on calculator technology are not acceptable.**

(4)

DO NOT WRITE IN THIS AREA

DO NOT WRITE IN THIS AREA

DO NOT WRITE IN THIS AREA



4. Using the laws of logarithms, solve the equation

$$2\log_5(3x - 2) - \log_5 x = 2$$

(5)

DO NOT WRITE IN THIS AREA

DO NOT WRITE IN THIS AREA

DO NOT WRITE IN THIS AREA



5. Using the laws of logarithms, solve the equation

$$\log_3 (12y + 5) - \log_3 (1 - 3y) = 2$$

(3)

DO NOT WRITE IN THIS AREA

DO NOT WRITE IN THIS AREA

DO NOT WRITE IN THIS AREA



6. The time,  $T$  seconds, that a pendulum takes to complete one swing is modelled by the formula

$$T = al^b$$

where  $l$  metres is the length of the pendulum and  $a$  and  $b$  are constants.

(a) Show that this relationship can be written in the form

$$\log_{10} T = b \log_{10} l + \log_{10} a \tag{2}$$

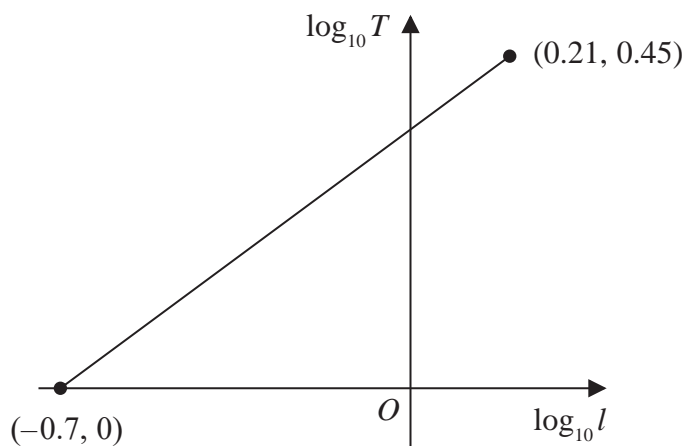


Figure 3

A student carried out an experiment to find the values of the constants  $a$  and  $b$ .

The student recorded the value of  $T$  for different values of  $l$ .

Figure 3 shows the linear relationship between  $\log_{10} l$  and  $\log_{10} T$  for the student's data.

The straight line passes through the points  $(-0.7, 0)$  and  $(0.21, 0.45)$

Using this information,

(b) find a complete equation for the model in the form

$$T = al^b$$

giving the value of  $a$  and the value of  $b$ , each to 3 significant figures. (3)

(c) With reference to the model, interpret the value of the constant  $a$ . (1)

---



---



---



---



---

DO NOT WRITE IN THIS AREA

DO NOT WRITE IN THIS AREA

DO NOT WRITE IN THIS AREA



7. (a) Sketch the curve with equation

$$y = 4^x$$

stating any points of intersection with the coordinate axes.

(2)

(b) Solve

$$4^x = 100$$

giving your answer to 2 decimal places.

(2)

DO NOT WRITE IN THIS AREA

DO NOT WRITE IN THIS AREA

DO NOT WRITE IN THIS AREA



8.

$$a = \log_2 x$$

$$b = \log_2(x + 8)$$

Express in terms of  $a$  and/or  $b$

(a)  $\log_2 \sqrt{x}$  (1)

(b)  $\log_2(x^2 + 8x)$  (2)

(c)  $\log_2\left(8 + \frac{64}{x}\right)$  (3)

Give your answer in simplest form.

(3)

DO NOT WRITE IN THIS AREA

DO NOT WRITE IN THIS AREA

DO NOT WRITE IN THIS AREA





9.

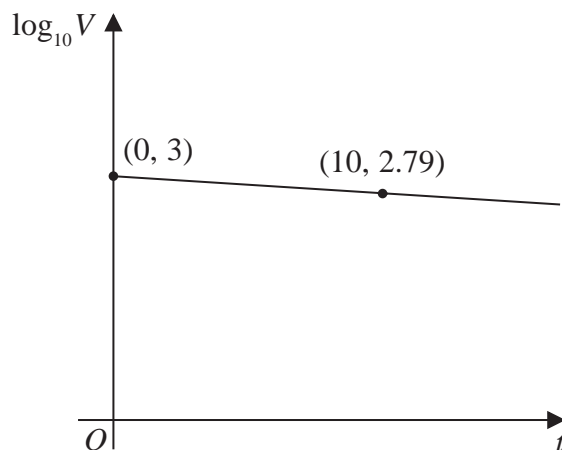


Figure 2

The value,  $V$  pounds, of a mobile phone,  $t$  months after it was bought, is modelled by

$$V = ab^t$$

where  $a$  and  $b$  are constants.

Figure 2 shows the linear relationship between  $\log_{10} V$  and  $t$ .

The line passes through the points  $(0, 3)$  and  $(10, 2.79)$  as shown.

Using these points,

(a) find the initial value of the phone, (2)

(b) find a complete equation for  $V$  in terms of  $t$ , giving the exact value of  $a$  and giving the value of  $b$  to 3 significant figures. (3)

Exactly 2 years after it was bought, the value of the phone was £320

(c) Use this information to evaluate the reliability of the model. (2)

---

---

---

---

---

---

---

---

---

---

---

---

---

---

---

---

---

---

---

---

---

---

---

---



10. Given that

$$\log_2(x + 3) + \log_2(x + 10) = 2 + 2\log_2 x$$

(a) show that

$$3x^2 - 13x - 30 = 0 \quad (3)$$

(b) (i) Write down the roots of the equation

$$3x^2 - 13x - 30 = 0$$

(ii) Hence state which of the roots in part (b)(i) is not a solution of

$$\log_2(x + 3) + \log_2(x + 10) = 2 + 2\log_2 x$$

giving a reason for your answer.

(2)

DO NOT WRITE IN THIS AREA

DO NOT WRITE IN THIS AREA

DO NOT WRITE IN THIS AREA

