

Please check the examination details below before entering your candidate information

Candidate surname

Other names

Pearson Edexcel
International
Advanced Level

Centre Number

--	--	--	--	--

Candidate Number

--	--	--	--

Wednesday 10 June 2020

Afternoon (Time: 1 hour 30 minutes)

Paper Reference **WMA14/01**

Mathematics

**International Advanced Subsidiary/Advanced Level
Pure Mathematics P4**

You must have:

Mathematical Formulae and Statistical Tables (Lilac), calculator

Total Marks

Candidates may use any calculator permitted by Pearson regulations. Calculators must not have the facility for symbolic algebra manipulation, differentiation and integration, or have retrievable mathematical formulae stored in them.

Instructions

- Use **black** ink or ball-point pen.
- If pencil is used for diagrams/sketches/graphs it must be dark (HB or B).
- **Fill in the boxes** at the top of this page with your name, centre number and candidate number.
- Answer **all** questions and ensure that your answers to parts of questions are clearly labelled.
- Answer the questions in the spaces provided
– *there may be more space than you need.*
- You should show sufficient working to make your methods clear. Answers without working may not gain full credit.
- Inexact answers should be given to three significant figures unless otherwise stated.

Information

- A booklet 'Mathematical Formulae and Statistical Tables' is provided.
- There are 9 questions in this question paper. The total mark for this paper is 75.
- The marks for **each** question are shown in brackets
– *use this as a guide as to how much time to spend on each question.*

Advice

- Read each question carefully before you start to answer it.
- Try to answer every question.
- Check your answers if you have time at the end.
- If you change your mind about an answer, cross it out and put your new answer and any working underneath.

Turn over ►

P65759A

©2020 Pearson Education Ltd.

1/1/1/



Pearson

Leave blank

Question 1 continued

DO NOT WRITE IN THIS AREA

DO NOT WRITE IN THIS AREA

DO NOT WRITE IN THIS AREA

Q1

(Total 4 marks)



P 6 5 7 5 9 A 0 3 3 2

2. (a) Use the binomial expansion to expand

$$(4 - 5x)^{-\frac{1}{2}} \quad |x| < \frac{4}{5}$$

in ascending powers of x , up to and including the term in x^2 giving each coefficient as a fully simplified fraction.

(4)

$$f(x) = \frac{2 + kx}{\sqrt{4 - 5x}} \quad \text{where } k \text{ is a constant and } |x| < \frac{4}{5}$$

Given that the series expansion of $f(x)$, in ascending powers of x , is

$$1 + \frac{3}{10}x + mx^2 + \dots \quad \text{where } m \text{ is a constant}$$

- (b) find the value of k , (2)
- (c) find the value of m . (2)

DO NOT WRITE IN THIS AREA

DO NOT WRITE IN THIS AREA

DO NOT WRITE IN THIS AREA



Leave blank

Question 2 continued

A large rectangular area containing 28 horizontal lines for writing.

DO NOT WRITE IN THIS AREA

DO NOT WRITE IN THIS AREA

DO NOT WRITE IN THIS AREA



Leave blank

Question 2 continued

DO NOT WRITE IN THIS AREA

DO NOT WRITE IN THIS AREA

DO NOT WRITE IN THIS AREA

Blank lined area for writing the answer to Question 2.

(Total 8 marks)

Q2

Score box for Question 2



P 6 5 7 5 9 A 0 7 3 2

3.

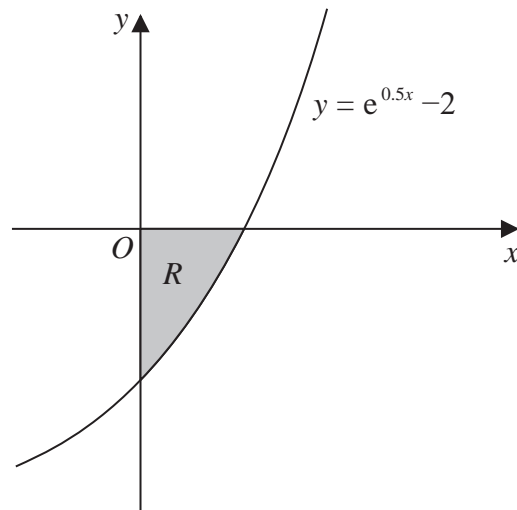
**Figure 1**

Figure 1 shows a sketch of part of the curve with equation $y = e^{0.5x} - 2$

The region R , shown shaded in Figure 1, is bounded by the curve, the x -axis and the y -axis.

The region R is rotated 360° about the x -axis to form a solid of revolution.

Show that the volume of this solid can be written in the form $a \ln 2 + b$, where a and b are constants to be found.

(6)

Leave blank

Question 3 continued

Lined area for writing the answer to Question 3.

DO NOT WRITE IN THIS AREA

DO NOT WRITE IN THIS AREA

DO NOT WRITE IN THIS AREA

Q3

(Total 6 marks)



P 6 5 7 5 9 A 0 9 3 2

Leave blank

4.

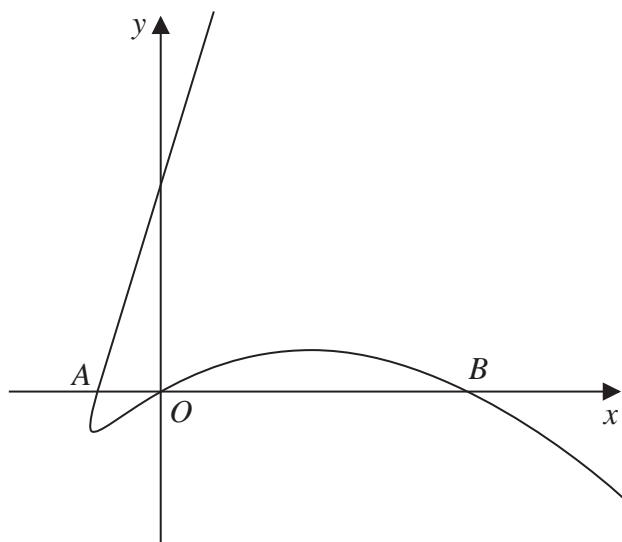


Figure 2

Figure 2 shows a sketch of part of the curve with parametric equations

$$x = 2t^2 - 6t, \quad y = t^3 - 4t, \quad t \in \mathbb{R}$$

The curve cuts the x -axis at the origin and at the points A and B , as shown in Figure 2.

(a) Find the coordinates of A and show that B has coordinates $(20, 0)$. (3)

(b) Show that the equation of the tangent to the curve at B is $7y + 4x - 80 = 0$ (5)

The tangent to the curve at B cuts the curve again at the point P .

(c) Find, using algebra, the x coordinate of P . (4)



DO NOT WRITE IN THIS AREA

DO NOT WRITE IN THIS AREA

DO NOT WRITE IN THIS AREA

Leave
blank

Question 4 continued

Lined area for writing answers.

DO NOT WRITE IN THIS AREA

DO NOT WRITE IN THIS AREA

DO NOT WRITE IN THIS AREA



Leave blank

5.

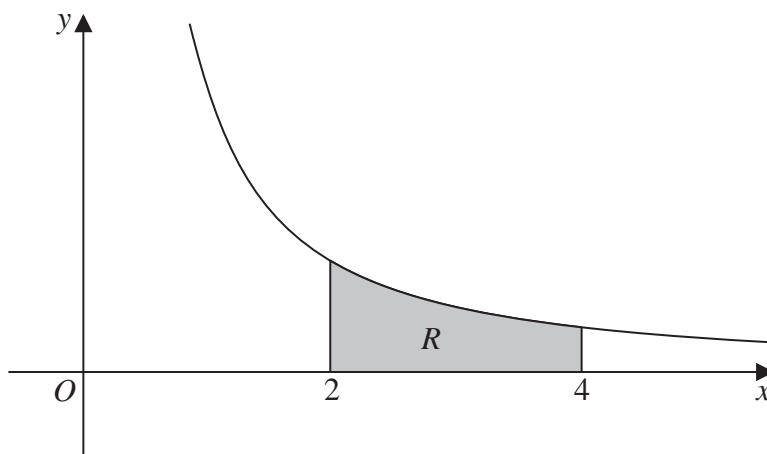


Figure 3

- (a) Find $\int \frac{\ln x}{x^2} dx$ (3)

Figure 3 shows a sketch of part of the curve with equation

$$y = \frac{3 + 2x + \ln x}{x^2} \quad x > 0.5$$

The finite region R , shown shaded in Figure 3, is bounded by the curve, the line with equation $x = 2$, the x -axis and the line with equation $x = 4$

- (b) Use the answer to part (a) to find the exact area of R , writing your answer in simplest form. (4)

DO NOT WRITE IN THIS AREA

DO NOT WRITE IN THIS AREA

DO NOT WRITE IN THIS AREA



6. A curve C has equation

$$y = x^{\sin x} \quad x > 0 \quad y > 0$$

- (a) Find, by firstly taking natural logarithms, an expression for $\frac{dy}{dx}$ in terms of x and y . (5)
- (b) Hence show that the x coordinates of the stationary points of C are solutions of the equation

$$\tan x + x \ln x = 0 \quad (2)$$

DO NOT WRITE IN THIS AREA

DO NOT WRITE IN THIS AREA

DO NOT WRITE IN THIS AREA



Leave blank

Question 6 continued

Lined area for writing the answer to Question 6.

DO NOT WRITE IN THIS AREA

DO NOT WRITE IN THIS AREA

DO NOT WRITE IN THIS AREA



Leave blank

Question 6 continued

Lined area for writing the answer to Question 6.

DO NOT WRITE IN THIS AREA

DO NOT WRITE IN THIS AREA

DO NOT WRITE IN THIS AREA



Leave blank

Question 6 continued

DO NOT WRITE IN THIS AREA

DO NOT WRITE IN THIS AREA

DO NOT WRITE IN THIS AREA

Lined writing area for Question 6

(Total 7 marks)

Q6



P 6 5 7 5 9 A 0 2 1 3 2

7. (i) Using a suitable substitution, find, using calculus, the value of

$$\int_1^5 \frac{3x}{\sqrt{2x-1}} dx$$

(Solutions relying entirely on calculator technology are not acceptable.)

(6)

- (ii) Find

$$\int \frac{6x^2 - 16}{(x+1)(2x-3)} dx$$

(6)

DO NOT WRITE IN THIS AREA

DO NOT WRITE IN THIS AREA

DO NOT WRITE IN THIS AREA



Leave
blank

Question 7 continued

DO NOT WRITE IN THIS AREA

DO NOT WRITE IN THIS AREA

DO NOT WRITE IN THIS AREA



8. Relative to a fixed origin O , the lines l_1 and l_2 are given by the equations

$$l_1: \quad \mathbf{r} = \begin{pmatrix} 4 \\ -3 \\ 2 \end{pmatrix} + \lambda \begin{pmatrix} 3 \\ -2 \\ -1 \end{pmatrix} \quad \text{where } \lambda \text{ is a scalar parameter}$$

$$l_2: \quad \mathbf{r} = \begin{pmatrix} 2 \\ 0 \\ -9 \end{pmatrix} + \mu \begin{pmatrix} 2 \\ -1 \\ -3 \end{pmatrix} \quad \text{where } \mu \text{ is a scalar parameter}$$

Given that l_1 and l_2 meet at the point X ,

- (a) find the position vector of X . (5)

The point $P(10, -7, 0)$ lies on l_1

The point Q lies on l_2

Given that \vec{PQ} is perpendicular to l_2

- (b) calculate the coordinates of Q . (5)

DO NOT WRITE IN THIS AREA

DO NOT WRITE IN THIS AREA

DO NOT WRITE IN THIS AREA



9. Bacteria are growing on the surface of a dish in a laboratory.

The area of the dish, $A \text{ cm}^2$, covered by the bacteria, t days after the bacteria start to grow, is modelled by the differential equation

$$\frac{dA}{dt} = \frac{A^3}{5t^2} \quad t > 0$$

Given that $A = 2.25$ when $t = 3$

- (a) show that

$$A = \left(\frac{pt}{qt + r} \right)^2$$

where p , q and r are integers to be found.

(7)

According to the model, there is a limit to the area that will be covered by the bacteria.

- (b) Find the value of this limit.

(2)

DO NOT WRITE IN THIS AREA

DO NOT WRITE IN THIS AREA

DO NOT WRITE IN THIS AREA



Leave blank

Question 9 continued

Lined area for writing the answer to Question 9.

(Total 9 marks)

Q9

END TOTAL FOR PAPER IS 75 MARKS

DO NOT WRITE IN THIS AREA

DO NOT WRITE IN THIS AREA

DO NOT WRITE IN THIS AREA

