

Write your name here

Surname

Other names

**Pearson Edexcel**  
**International**  
**Advanced Level**

Centre Number

--	--	--	--	--	--

Candidate Number

--	--	--	--	--	--

# Mechanics M3

## Advanced/Advanced Subsidiary

Wednesday 16 May 2018 – Morning

**Time: 1 hour 30 minutes**

Paper Reference

**WME03/01****You must have:**

Mathematical Formulae and Statistical Tables (Blue)

Total Marks

--

**Candidates may use any calculator allowed by the regulations of the Joint Council for Qualifications. Calculators must not have the facility for symbolic algebra manipulation, differentiation and integration, or have retrievable mathematical formulae stored in them.**

**Instructions**

- Use **black** ink or ball-point pen.
- If pencil is used for diagrams/sketches/graphs it must be dark (HB or B). Coloured pencils and highlighter pens must not be used.
- **Fill in the boxes** at the top of this page with your name, centre number and candidate number.
- Answer **all** questions and ensure that your answers to parts of questions are clearly labelled.
- Answer the questions in the spaces provided  
– *there may be more space than you need.*
- You should show sufficient working to make your methods clear. Answers without working may not gain full credit.
- Whenever a numerical value of  $g$  is required, take  $g = 9.8 \text{ m s}^{-2}$ , and give your answer to either two significant figures or three significant figures.
- When a calculator is used, the answer should be given to an appropriate degree of accuracy.

**Information**

- The total mark for this paper is 75.
- The marks for **each** question are shown in brackets  
– *use this as a guide as to how much time to spend on each question.*

**Advice**

- Read each question carefully before you start to answer it.
- Try to answer every question.
- Check your answers if you have time at the end.

Turn over ►

P51303A

©2018 Pearson Education Ltd.

1/1/1/



Pearson

Leave  
blank

1. A light elastic string of modulus of elasticity  $29.4\text{N}$  has one end attached to a fixed point  $A$ . A particle  $P$  of mass  $1.5\text{kg}$  is attached to the other end of the string and  $P$  hangs freely in equilibrium  $0.5\text{m}$  vertically below  $A$ . Find the natural length of the string.

(4)

DO NOT WRITE IN THIS AREA

DO NOT WRITE IN THIS AREA

DO NOT WRITE IN THIS AREA



Leave blank

Question 1 continued

DO NOT WRITE IN THIS AREA

DO NOT WRITE IN THIS AREA

DO NOT WRITE IN THIS AREA

Lined area for writing the answer to Question 1.

(Total 4 marks)

Q1

Small empty box for marking the question.



Leave blank

2. A particle  $P$  is moving in a straight line with simple harmonic motion about the fixed point  $O$  as centre. When  $P$  is a distance  $0.02\text{ m}$  from  $O$ , the speed of  $P$  is  $0.3\text{ m s}^{-1}$  and the magnitude of the acceleration of  $P$  is  $0.5\text{ m s}^{-2}$

(a) Find the period of the motion. (4)

The amplitude of the motion is  $a$  metres.

Find

(b) the value of  $a$ , (3)

(c) the total length of time during each complete oscillation for which  $P$  is within  $\frac{1}{2}a$  metres of  $O$ . (4)

Horizontal lines for writing answers.

DO NOT WRITE IN THIS AREA

DO NOT WRITE IN THIS AREA

DO NOT WRITE IN THIS AREA







Leave blank

**Question 2 continued**

Lined area for writing the answer to Question 2.

DO NOT WRITE IN THIS AREA

DO NOT WRITE IN THIS AREA

DO NOT WRITE IN THIS AREA

**Q2**

--	--

**(Total 11 marks)**



3.

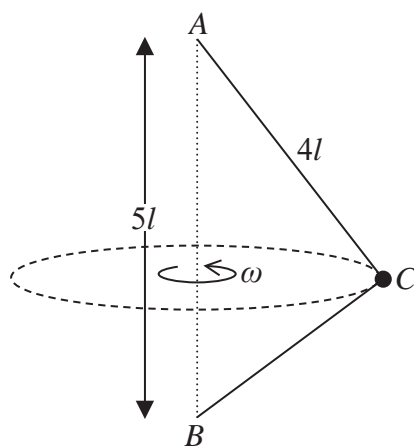


Figure 1

A light inextensible string of length  $7l$  has one end attached to a fixed point  $A$  and the other end attached to a fixed point  $B$ , where  $A$  is vertically above  $B$  and  $AB = 5l$ . A particle of mass  $m$  is attached to the string at the point  $C$  where  $AC = 4l$ , as shown in Figure 1. The particle moves in a horizontal circle with constant angular speed  $\omega$ . Both parts of the string are taut.

(a) Find, in terms of  $m$ ,  $g$ ,  $l$  and  $\omega$ ,

(i) the tension in  $AC$ ,

(ii) the tension in  $BC$ .

(9)

The time taken by the particle to complete one revolution is  $R$ .

Given that  $R \leq k\pi\sqrt{\frac{l}{5g}}$

(b) find the least possible value of  $k$ .

(3)

---



---



---



---



---



---



---



---



---



---



---



---



---



---



---



---



---



---



---



---



---



---

DO NOT WRITE IN THIS AREA

DO NOT WRITE IN THIS AREA

DO NOT WRITE IN THIS AREA







Leave blank

Question 3 continued

DO NOT WRITE IN THIS AREA

DO NOT WRITE IN THIS AREA

DO NOT WRITE IN THIS AREA



Leave blank

Question 3 continued

DO NOT WRITE IN THIS AREA

DO NOT WRITE IN THIS AREA

DO NOT WRITE IN THIS AREA

Blank lined area for writing the answer to Question 3 continued.

(Total 12 marks)

Q3

--	--



Leave blank

4.

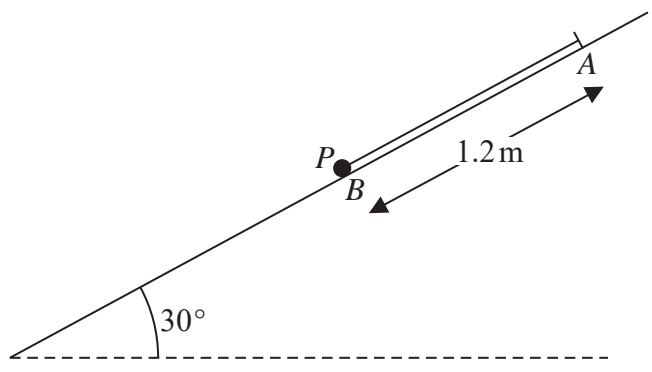


Figure 2

Figure 2 shows a light elastic string, of modulus of elasticity  $\lambda$  newtons and natural length 0.6m. One end of the string is attached to a fixed point *A* on a rough plane which is inclined at  $30^\circ$  to the horizontal. The other end of the string is attached to a particle *P* of mass 0.5 kg. The string lies along a line of greatest slope of the plane. The particle is held at rest on the plane at the point *B*, where *B* is lower than *A* and  $AB = 1.2\text{ m}$ . The particle then receives an impulse of magnitude 1.5 N s in the direction parallel to the string, causing *P* to move up the plane towards *A*. The coefficient of friction between *P* and the plane is 0.7. Given that *P* comes to rest at the instant when the string becomes slack, find the value of  $\lambda$ .

(8)

---

---

---

---

---

---

---

---

---

---

---

---

---

---

---

---

---

---

---

---

---

---

---

---

---

DO NOT WRITE IN THIS AREA

DO NOT WRITE IN THIS AREA

DO NOT WRITE IN THIS AREA





Leave blank

**Question 4 continued**

Lined area for writing answers to Question 4 continued, consisting of 35 horizontal lines.

DO NOT WRITE IN THIS AREA

DO NOT WRITE IN THIS AREA

DO NOT WRITE IN THIS AREA





5. A particle  $P$  of mass  $0.8\text{kg}$  moves along the  $x$ -axis in the positive  $x$  direction under the action of a resultant force. This force acts in the direction of  $x$  increasing. At time  $t$  seconds,  $t \geq 0$ ,  $P$  is  $x$  metres from the origin  $O$ ,  $P$  is moving with speed  $v \text{ m s}^{-1}$  and the force has magnitude  $\frac{4}{(x+1)^3} \text{ N}$ .

When  $t = 0$ ,  $P$  is at rest at  $O$ .

(a) Show that  $v^2 = 5 \left( \frac{(x+1)^2 - 1}{(x+1)^2} \right)$  (6)

When  $t = 2$ ,  $P$  is at the point  $A$ . When  $t = 4$ ,  $P$  is at the point  $B$ .

(b) Using algebraic integration, find the distance  $AB$ . (7)

DO NOT WRITE IN THIS AREA

DO NOT WRITE IN THIS AREA

DO NOT WRITE IN THIS AREA







Leave blank

Question 5 continued

Horizontal lines for writing.

DO NOT WRITE IN THIS AREA

DO NOT WRITE IN THIS AREA

DO NOT WRITE IN THIS AREA



Leave  
blank

**Question 5 continued**

Handwriting practice area consisting of multiple horizontal lines.

DO NOT WRITE IN THIS AREA

DO NOT WRITE IN THIS AREA

DO NOT WRITE IN THIS AREA

Q5

--	--

**(Total 13 marks)**



6. A uniform solid right circular cone has base radius  $r$  and height  $h$ .
- (a) Use algebraic integration to show that the distance of the centre of mass of the cone from its vertex is  $\frac{3}{4}h$ .

(5)

[You may assume that the volume of a cone of base radius  $r$  and height  $h$  is  $\frac{1}{3}\pi r^2 h$ ]

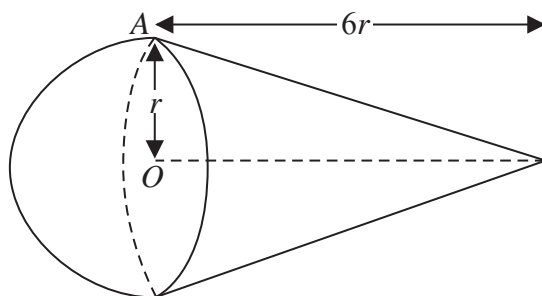


Figure 3

A solid  $S$  is formed by joining a uniform right circular solid cone of mass  $5m$  to a uniform solid hemisphere, of radius  $r$  and mass  $km$  where  $k < 20$ . The cone has base radius  $r$  and height  $6r$ . The plane face of the cone coincides with the plane face of the hemisphere. The centre of the plane face of the cone is  $O$  and the point  $A$  is on the circular edge of this plane face, as shown in Figure 3.

- (b) Find the distance from  $O$  to the centre of mass of  $S$ .

(4)

The solid is suspended from  $A$  and hangs freely in equilibrium. The angle between the axis of the cone and the horizontal is  $30^\circ$ .

- (c) Find, to the nearest whole number, the value of  $k$ .

(4)

---

---

---

---

---

---

---

---

---

---

---

---

---

---

---

---

---

---

---

---

---

---

---

---

---

---

DO NOT WRITE IN THIS AREA

DO NOT WRITE IN THIS AREA

DO NOT WRITE IN THIS AREA



Leave blank

Question 6 continued

Lined writing area for the answer to Question 6.

DO NOT WRITE IN THIS AREA

DO NOT WRITE IN THIS AREA

DO NOT WRITE IN THIS AREA







Leave  
blank

7.

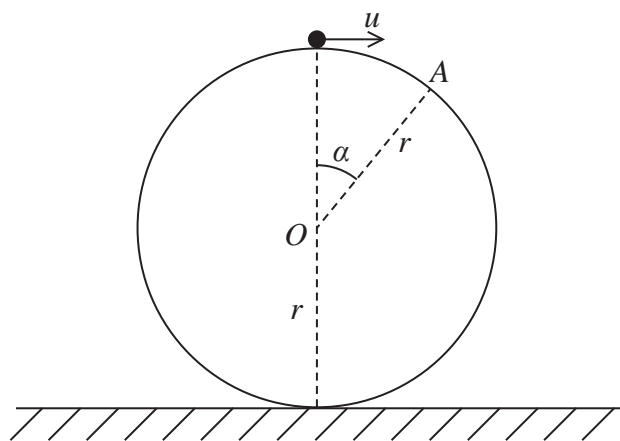


Figure 4

A smooth solid sphere, with centre  $O$  and radius  $r$ , is fixed with its lowest point on a horizontal plane. A particle is placed on the surface of the sphere at the highest point of the sphere. The particle is then projected horizontally with speed  $u$  and starts to move on the surface of the sphere. The particle leaves the surface of the sphere at the point  $A$  where  $OA$  makes an angle  $\alpha$ ,  $\alpha > 0$ , with the upward vertical, as shown in Figure 4.

(a) Show that  $\cos \alpha = \frac{1}{3gr}(u^2 + 2gr)$  (7)

(b) Show that  $u < \sqrt{gr}$  (2)

After leaving the surface of the sphere, the particle strikes the plane with speed  $3\sqrt{\frac{gr}{2}}$

(c) Find the value of  $\cos \alpha$ . (5)

---

---

---

---

---

---

---

---

---

---

---

---

---

---

---

---

---

---

---

---

---

---

---

DO NOT WRITE IN THIS AREA

DO NOT WRITE IN THIS AREA

DO NOT WRITE IN THIS AREA





Leave blank

**Question 7 continued**

Lined area for writing the answer to Question 7.

DO NOT WRITE IN THIS AREA

DO NOT WRITE IN THIS AREA

DO NOT WRITE IN THIS AREA





Leave blank

**Question 7 continued**

Lined area for writing the answer to Question 7.

DO NOT WRITE IN THIS AREA

DO NOT WRITE IN THIS AREA

DO NOT WRITE IN THIS AREA



Leave blank

**Question 7 continued**

Handwriting practice area consisting of 25 horizontal lines.

**(Total 14 marks)**

**Q7**

**TOTAL FOR PAPER: 75 MARKS**

**END**

DO NOT WRITE IN THIS AREA

DO NOT WRITE IN THIS AREA

DO NOT WRITE IN THIS AREA

