

Write your name here

Surname

Other names

Pearson Edexcel
International
Advanced Level

Centre Number

--	--	--	--	--

Candidate Number

--	--	--	--

Mechanics M3

Advanced/Advanced Subsidiary

Wednesday 28 January 2015 – Afternoon

Time: 1 hour 30 minutes

Paper Reference

WME03/01**You must have:**

Mathematical Formulae and Statistical Tables (Blue)

Total Marks

--

Candidates may use any calculator allowed by the regulations of the Joint Council for Qualifications. Calculators must not have the facility for symbolic algebra manipulation, differentiation and integration, or have retrievable mathematical formulae stored in them.

Instructions

- Use **black** ink or ball-point pen.
- If pencil is used for diagrams/sketches/graphs it must be dark (HB or B). Coloured pencils and highlighter pens must not be used.
- **Fill in the boxes** at the top of this page with your name, centre number and candidate number.
- Answer **all** questions and ensure that your answers to parts of questions are clearly labelled.
- Answer the questions in the spaces provided
– *there may be more space than you need.*
- You should show sufficient working to make your methods clear. Answers without working may not gain full credit.
- Whenever a numerical value of g is required, take $g = 9.8 \text{ m s}^{-2}$, and give your answer to either two significant figures or three significant figures.
- When a calculator is used, the answer should be given to an appropriate degree of accuracy.

Information

- The total mark for this paper is 75.
- The marks for **each** question are shown in brackets
– *use this as a guide as to how much time to spend on each question.*

Advice

- Read each question carefully before you start to answer it.
- Try to answer every question.
- Check your answers if you have time at the end.

Turn over ►

P45063A

©2015 Pearson Education Ltd.

5/5/15/



PEARSON

Leave blank

3.

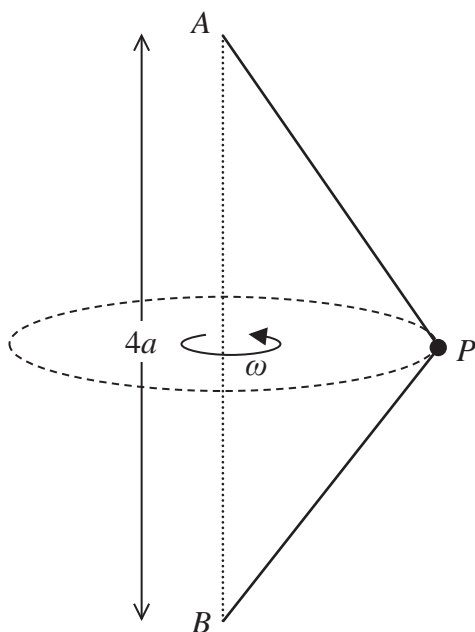


Figure 2

A light inextensible string has one end attached to a fixed point A and the other end attached to a particle P of mass m . An identical string has one end attached to the fixed point B , where B is vertically below A and $AB = 4a$, and the other end attached to P , as shown in Figure 2. The particle is moving in a horizontal circle with constant angular speed ω , with both strings taut and inclined at 30° to the vertical. The tension in the upper string is twice the tension in the lower string.

Find ω in terms of a and g .

(8)



Leave blank

5.

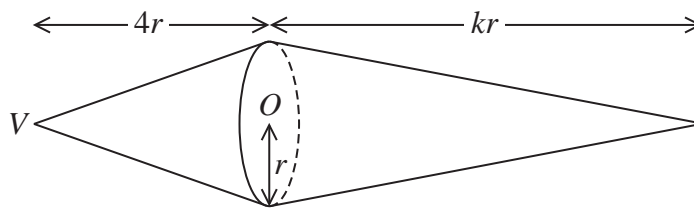


Figure 3

Figure 3 shows a uniform solid S formed by joining the plane faces of two solid right circular cones, of base radius r , so that the centres of their bases coincide at O . One cone, with vertex V , has height $4r$ and the other cone has height kr , where $k > 4$

(a) Find the distance of the centre of mass of S from O . (4)

The point A lies on the circumference of the common base of the cones. The solid is placed on a horizontal surface with VA in contact with the surface. Given that S rests in equilibrium,

(b) find the greatest possible value of k . (3)

When S is suspended from A and hangs freely in equilibrium, OA makes an angle of 12° with the downward vertical.

(c) Find the value of k . (3)



Leave
blank

Question 5 continued

Lined area for writing the answer to Question 5.



Leave blank

6. A smooth sphere, with centre O and radius a , is fixed with its lowest point A on a horizontal floor. A particle P is placed on the surface of the sphere at the point B , where B is vertically above A . The particle is projected horizontally from B with speed $\sqrt{\frac{ag}{5}}$ and moves along the surface of the sphere. When OP makes an angle θ with the upward vertical, and P is still in contact with the sphere, the speed of P is v .

(a) Show that $v^2 = \frac{ag}{5}(11 - 10 \cos \theta)$. (4)

The particle leaves the surface of the sphere at the point C .

Find

(b) the speed of P at C in terms of a and g , (6)

(c) the size of the angle between the floor and the direction of motion of P at the instant immediately before P hits the floor. (5)



Leave
blank

7. A particle P of mass m is attached to one end of a light elastic string, of natural length a and modulus of elasticity λ . The other end of the string is attached to a fixed point A on a smooth plane which is inclined at 30° to the horizontal. The string lies along a line of greatest slope of the plane. The particle rests in equilibrium at the point B , where B is lower than A and $AB = \frac{6}{5}a$.

(a) Show that $\lambda = \frac{5}{2}mg$. (4)

The particle is now pulled down a line of greatest slope to the point C , where $BC = \frac{1}{5}a$, and released from rest.

(b) Show that P moves with simple harmonic motion of period $2\pi\sqrt{\frac{2a}{5g}}$ (6)

(c) Find, in terms of g , the greatest magnitude of the acceleration of P while the string is taut. (2)

The midpoint of BC is D and the string becomes slack for the first time at the point E .

(d) Find, in terms of a and g , the time taken by P to travel directly from D to E . (4)



