

Please check the examination details below before entering your candidate information

Candidate surname

Other names

**Pearson Edexcel
Level 3 GCE**

Centre Number

--	--	--	--	--

Candidate Number

--	--	--	--	--

Thursday 6 June 2019

Afternoon (Time: 1 hour 30 minutes)

Paper Reference **9FM0/02**

Further Mathematics

Advanced

Paper 2: Core Pure Mathematics 2

You must have:

Mathematical Formulae and Statistical Tables (Green), calculator

Total Marks

Candidates may use any calculator permitted by Pearson regulations. Calculators must not have the facility for algebraic manipulation, differentiation and integration, or have retrievable mathematical formulae stored in them.

Instructions

- Use **black** ink or ball-point pen.
- If pencil is used for diagrams/sketches/graphs it must be dark (HB or B).
- **Fill in the boxes** at the top of this page with your name, centre number and candidate number.
- Answer **all** questions and ensure that your answers to parts of questions are clearly labelled.
- Answer the questions in the spaces provided
– *there may be more space than you need.*
- You should show sufficient working to make your methods clear.
Answers without working may not gain full credit.
- Answers should be given to three significant figures unless otherwise stated.

Information

- A booklet 'Mathematical Formulae and Statistical Tables' is provided.
- There are 8 questions in this question paper. The total mark for this paper is 75.
- The marks for **each** question are shown in brackets
– *use this as a guide as to how much time to spend on each question.*

Advice

- Read each question carefully before you start to answer it.
- Try to answer every question.
- Check your answers if you have time at the end.

Turn over ►

P61178A

©2019 Pearson Education Ltd.

1/1/1/




Pearson

2. The roots of the equation

$$x^3 - 2x^2 + 4x - 5 = 0$$

are p , q and r .

Without solving the equation, find the value of

(i) $\frac{2}{p} + \frac{2}{q} + \frac{2}{r}$

(ii) $(p - 4)(q - 4)(r - 4)$

(iii) $p^3 + q^3 + r^3$

(8)

DO NOT WRITE IN THIS AREA

DO NOT WRITE IN THIS AREA

DO NOT WRITE IN THIS AREA



Question 3 continued

DO NOT WRITE IN THIS AREA

DO NOT WRITE IN THIS AREA

DO NOT WRITE IN THIS AREA

(Total for Question 3 is 6 marks)

4. The infinite series C and S are defined by

$$C = \cos \theta + \frac{1}{2} \cos 5\theta + \frac{1}{4} \cos 9\theta + \frac{1}{8} \cos 13\theta + \dots$$

$$S = \sin \theta + \frac{1}{2} \sin 5\theta + \frac{1}{4} \sin 9\theta + \frac{1}{8} \sin 13\theta + \dots$$

Given that the series C and S are both convergent,

(a) show that

$$C + iS = \frac{2e^{i\theta}}{2 - e^{4i\theta}} \quad (4)$$

(b) Hence show that

$$S = \frac{4\sin \theta + 2\sin 3\theta}{5 - 4\cos 4\theta} \quad (4)$$

DO NOT WRITE IN THIS AREA

DO NOT WRITE IN THIS AREA

DO NOT WRITE IN THIS AREA



5. An engineer is investigating the motion of a sprung diving board at a swimming pool. Let E be the position of the end of the diving board when it is at rest in its equilibrium position and when there is no diver standing on the diving board. A diver jumps from the diving board. The vertical displacement, h cm, of the end of the diving board above E is modelled by the differential equation

$$4 \frac{d^2h}{dt^2} + 4 \frac{dh}{dt} + 37h = 0$$

where t seconds is the time after the diver jumps.

- (a) Find a general solution of the differential equation. (2)

When $t = 0$, the end of the diving board is 20 cm below E and is moving upwards with a speed of 55 cm s^{-1} .

- (b) Find, according to the model, the maximum vertical displacement of the end of the diving board above E . (8)

- (c) Comment on the suitability of the model for large values of t . (2)

DO NOT WRITE IN THIS AREA

DO NOT WRITE IN THIS AREA

DO NOT WRITE IN THIS AREA



Question 5 continued

DO NOT WRITE IN THIS AREA

DO NOT WRITE IN THIS AREA

DO NOT WRITE IN THIS AREA

(Main writing area with multiple horizontal lines)



Question 6 continued

Ruled area for writing answers, consisting of horizontal lines.

DO NOT WRITE IN THIS AREA

DO NOT WRITE IN THIS AREA

DO NOT WRITE IN THIS AREA



P 6 1 1 7 8 A 0 1 7 2 8

7.

$$\mathbf{M} = \begin{pmatrix} 2 & -1 & 1 \\ 3 & k & 4 \\ 3 & 2 & -1 \end{pmatrix} \quad \text{where } k \text{ is a constant}$$

(a) Find the values of k for which the matrix \mathbf{M} has an inverse.

(2)

(b) Find, in terms of p , the coordinates of the point where the following planes intersect

$$2x - y + z = p$$

$$3x - 6y + 4z = 1$$

$$3x + 2y - z = 0$$

(5)

(c) (i) Find the value of q for which the set of simultaneous equations

$$2x - y + z = 1$$

$$3x - 5y + 4z = q$$

$$3x + 2y - z = 0$$

can be solved.

(ii) For this value of q , interpret the solution of the set of simultaneous equations geometrically.

(4)

DO NOT WRITE IN THIS AREA

DO NOT WRITE IN THIS AREA

DO NOT WRITE IN THIS AREA



Question 7 continued

Lined writing area for the answer to Question 7.

DO NOT WRITE IN THIS AREA

DO NOT WRITE IN THIS AREA

DO NOT WRITE IN THIS AREA



Question 7 continued

DO NOT WRITE IN THIS AREA

DO NOT WRITE IN THIS AREA

DO NOT WRITE IN THIS AREA

(Total for Question 7 is 11 marks)



P 6 1 1 7 8 A 0 2 3 2 8

8.

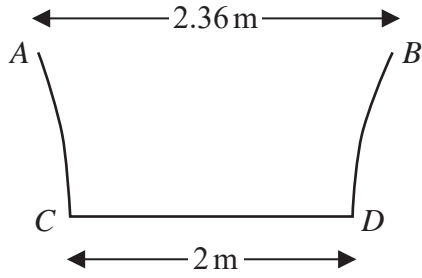


Figure 1

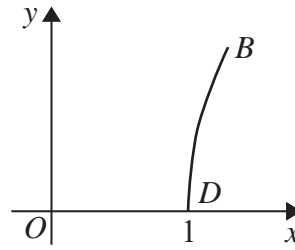


Figure 2

Figure 1 shows the central vertical cross section $ABCD$ of a paddling pool that has a circular horizontal cross section. Measurements of the diameters of the top and bottom of the paddling pool have been taken in order to estimate the volume of water that the paddling pool can contain.

Using these measurements, the curve BD is modelled by the equation

$$y = \ln(3.6x - k) \quad 1 \leq x \leq 1.18$$

as shown in Figure 2.

- (a) Find the value of k . (1)
- (b) Find the depth of the paddling pool according to this model. (2)

The pool is being filled with water from a tap.

- (c) Find, in terms of h , the volume of water in the pool when the pool is filled to a depth of h m. (5)

Given that the pool is being filled at a constant rate of 15 litres every minute,

- (d) find, in cm h^{-1} , the rate at which the water level is rising in the pool when the depth of the water is 0.2 m. (3)



DO NOT WRITE IN THIS AREA

Question 8 continued

DO NOT WRITE IN THIS AREA

DO NOT WRITE IN THIS AREA

DO NOT WRITE IN THIS AREA

Lined writing area for the answer.



Question 8 continued

DO NOT WRITE IN THIS AREA

DO NOT WRITE IN THIS AREA

DO NOT WRITE IN THIS AREA



Question 8 continued

DO NOT WRITE IN THIS AREA

DO NOT WRITE IN THIS AREA

DO NOT WRITE IN THIS AREA

Lined writing area for the answer to Question 8.



