

Cambridge  
International  
**AS Level**

**Cambridge International Examinations**  
Cambridge International Advanced Subsidiary Level

CANDIDATE  
NAME

--

CENTRE  
NUMBER

--	--	--	--	--

CANDIDATE  
NUMBER

--	--	--	--

**MATHEMATICS**

**9709/21**

Paper 2 Pure Mathematics 2 (P2)

**May/June 2018**

**1 hour 15 minutes**

Candidates answer on the Question Paper.

Additional Materials: List of Formulae (MF9)

**READ THESE INSTRUCTIONS FIRST**

Write your Centre number, candidate number and name in the spaces at the top of this page.

Write in dark blue or black pen.

You may use an HB pencil for any diagrams or graphs.

Do not use staples, paper clips, glue or correction fluid.

**DO NOT WRITE IN ANY BARCODES.**

Answer **all** the questions in the space provided. If additional space is required, you should use the lined page at the end of this booklet. The question number(s) must be clearly shown.

Give non-exact numerical answers correct to 3 significant figures, or 1 decimal place in the case of angles in degrees, unless a different level of accuracy is specified in the question.

The use of an electronic calculator is expected, where appropriate.

You are reminded of the need for clear presentation in your answers.

At the end of the examination, fasten all your work securely together.

The number of marks is given in brackets [ ] at the end of each question or part question.

The total number of marks for this paper is 50.

This document consists of **14** printed pages and **2** blank pages.



**BLANK PAGE**

1 Solve the equation  $3e^{2x} - 82e^x + 27 = 0$ , giving your answers in the form  $k \ln 3$ . [5]

.....

.....

.....

.....

.....

.....

.....

.....

.....

.....

.....

.....

.....

.....

.....

.....

.....

.....

.....

.....

.....

.....

.....

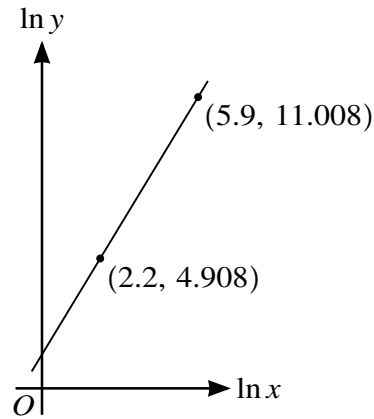
.....

.....

.....

.....

2



The variables  $x$  and  $y$  satisfy the equation  $y = A \times B^{\ln x}$ , where  $A$  and  $B$  are constants. The graph of  $\ln y$  against  $\ln x$  is a straight line passing through the points  $(2.2, 4.908)$  and  $(5.9, 11.008)$ , as shown in the diagram. Find the values of  $A$  and  $B$  correct to 2 significant figures. [5]

.....

.....

.....

.....

.....

.....

.....

.....

.....

.....

.....

.....

.....

.....

.....

.....

.....

.....

.....

.....

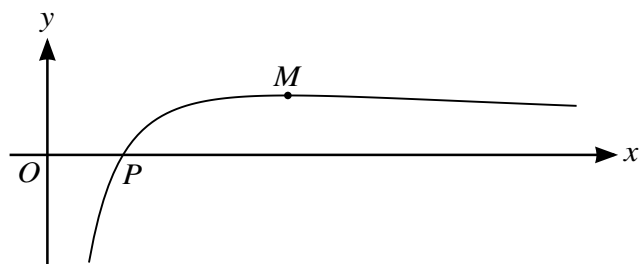
.....

.....

.....



4



The diagram shows the curve with equation  $y = \frac{5 \ln x}{2x + 1}$ . The curve crosses the  $x$ -axis at the point  $P$  and has a maximum point  $M$ .

- (i) Find the gradient of the curve at the point  $P$ . [3]

.....

.....

.....

.....

.....

.....

.....

.....

.....

.....

.....

.....

.....

.....

.....

.....

.....

.....

.....

.....

.....

.....

.....

.....

- (ii) Show that the  $x$ -coordinate of the point  $M$  satisfies the equation  $x = \frac{x + 0.5}{\ln x}$ . [2]

.....

.....

.....

.....

.....

.....

.....

.....

.....

.....

.....

.....

.....

.....

.....

.....

.....

.....

.....

.....

.....

.....

- (iii) Use an iterative formula based on the equation in part (ii) to find the  $x$ -coordinate of  $M$  correct to 4 significant figures. Show the result of each iteration to 6 significant figures. [3]

.....

.....

.....

.....

.....

.....

.....

.....

.....

.....

.....

.....

.....

.....

.....

.....

.....

.....

.....

.....

.....

.....

.....











## 12

- 7 (i) Express  $5 \cos \theta - 2 \sin \theta$  in the form  $R \cos(\theta + \alpha)$ , where  $R > 0$  and  $0 < \alpha < \frac{1}{2}\pi$ . Give the value of  $\alpha$  correct to 4 decimal places. [3]

.....

.....

.....

.....

.....

.....

.....

.....

.....

.....

.....

.....

.....

.....

.....

.....

.....

.....

.....

.....

.....

- (ii) Using your answer from part (i), solve the equation

$$5 \cot \theta - 4 \operatorname{cosec} \theta = 2$$

for  $0 < \theta < 2\pi$ .

[5]

.....

.....

.....

.....

.....

.....

.....

.....

.....

.....

.....

.....

.....

.....

.....

.....

.....

.....

.....

.....

.....

.....

.....

.....

.....

.....

.....

.....

.....

.....

.....

.....

.....

.....

.....

.....

.....

.....

.....

.....

.....

.....

.....

(iii) Find  $\int \frac{1}{(5 \cos \frac{1}{2}x - 2 \sin \frac{1}{2}x)^2} dx$ . [3]

.....

.....

.....

.....

.....

.....

.....

.....

.....

.....

.....

.....

.....

.....

.....

.....

.....

.....

.....

.....

.....

.....

A series of horizontal dotted lines spanning the width of the page, providing a template for writing.



**BLANK PAGE**

---

Permission to reproduce items where third-party owned material protected by copyright is included has been sought and cleared where possible. Every reasonable effort has been made by the publisher (UCLES) to trace copyright holders, but if any items requiring clearance have unwittingly been included, the publisher will be pleased to make amends at the earliest possible opportunity.

To avoid the issue of disclosure of answer-related information to candidates, all copyright acknowledgements are reproduced online in the Cambridge International Examinations Copyright Acknowledgements Booklet. This is produced for each series of examinations and is freely available to download at [www.cie.org.uk](http://www.cie.org.uk) after the live examination series.

Cambridge International Examinations is part of the Cambridge Assessment Group. Cambridge Assessment is the brand name of University of Cambridge Local Examinations Syndicate (UCLES), which is itself a department of the University of Cambridge.