



## Cambridge International AS & A Level

CANDIDATE  
NAME

CENTRE  
NUMBER

--	--	--	--	--

CANDIDATE  
NUMBER

--	--	--	--

\* 7 3 7 6 1 5 6 6 6 4 \*



**MATHEMATICS**

**9709/22**

Paper 2 Pure Mathematics 2

**October/November 2022**

**1 hour 15 minutes**

You must answer on the question paper.

You will need: List of formulae (MF19)

### INSTRUCTIONS

- Answer **all** questions.
- Use a black or dark blue pen. You may use an HB pencil for any diagrams or graphs.
- Write your name, centre number and candidate number in the boxes at the top of the page.
- Write your answer to each question in the space provided.
- Do **not** use an erasable pen or correction fluid.
- Do **not** write on any bar codes.
- If additional space is needed, you should use the lined page at the end of this booklet; the question number or numbers must be clearly shown.
- You should use a calculator where appropriate.
- You must show all necessary working clearly; no marks will be given for unsupported answers from a calculator.
- Give non-exact numerical answers correct to 3 significant figures, or 1 decimal place for angles in degrees, unless a different level of accuracy is specified in the question.

### INFORMATION

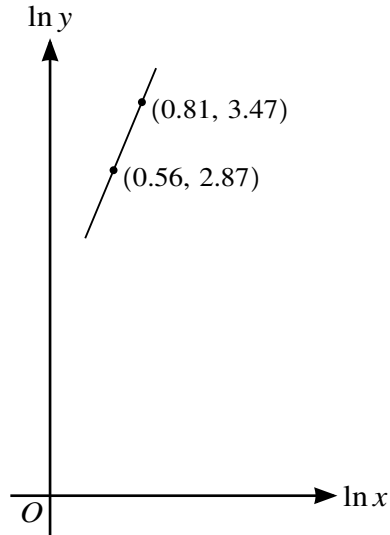
- The total mark for this paper is 50.
- The number of marks for each question or part question is shown in brackets [ ].

This document has **12** pages.





3



The variables  $x$  and  $y$  satisfy the equation  $y = Ax^k$ , where  $A$  and  $k$  are constants. The graph of  $\ln y$  against  $\ln x$  is a straight line passing through the points  $(0.56, 2.87)$  and  $(0.81, 3.47)$ , as shown in the diagram.

Find the value of  $k$ , and the value of  $A$  correct to 2 significant figures. [5]

.....

.....

.....

.....

.....

.....

.....

.....

.....

.....

.....

.....

.....

.....

.....

.....

.....

.....

.....

.....

.....

.....

.....

4 The polynomial  $p(x)$  is defined by

$$p(x) = ax^3 + 23x^2 - ax - 8,$$

where  $a$  is a constant. It is given that  $(2x + 1)$  is a factor of  $p(x)$ .

(a) Find the value of  $a$  and hence factorise  $p(x)$  completely. [5]

.....

.....

.....

.....

.....

.....

.....

.....

.....

.....

.....

.....

.....

.....

.....

.....

.....

.....

.....

.....

.....

.....

(b) Hence solve the equation  $p(e^{4y}) = 0$ , giving your answer correct to 3 significant figures. [2]

.....

.....

.....

.....

.....

.....

.....

.....

.....

.....

.....

.....

.....

.....

.....

.....

.....

.....

.....

.....

.....

.....



- (b) Show by calculation that the  $x$ -coordinate of  $P$  lies between 1.8 and 1.9. [2]

.....

.....

.....

.....

.....

.....

.....

.....

.....

.....

.....

.....

.....

.....

.....

.....

.....

.....

.....

.....

.....

.....

- (c) Use an iterative formula, based on the equation in part (a), to find the  $x$ -coordinate of  $P$  correct to 3 significant figures. Give the result of each iteration to 5 significant figures. [3]

.....

.....

.....

.....

.....

.....

.....

.....

.....

.....

.....

.....

.....

.....

.....

.....

.....

.....

.....

.....

.....

.....











