



Cambridge International AS & A Level

CANDIDATE
NAME

CENTRE
NUMBER

--	--	--	--	--

CANDIDATE
NUMBER

--	--	--	--



FURTHER MATHEMATICS

9231/32

Paper 3 Further Mechanics

May/June 2021

1 hour 30 minutes

You must answer on the question paper.

You will need: List of formulae (MF19)

INSTRUCTIONS

- Answer **all** questions.
- Use a black or dark blue pen. You may use an HB pencil for any diagrams or graphs.
- Write your name, centre number and candidate number in the boxes at the top of the page.
- Write your answer to each question in the space provided.
- Do **not** use an erasable pen or correction fluid.
- Do **not** write on any bar codes.
- If additional space is needed, you should use the lined page at the end of this booklet; the question number or numbers must be clearly shown.
- You should use a calculator where appropriate.
- You must show all necessary working clearly; no marks will be given for unsupported answers from a calculator.
- Give non-exact numerical answers correct to 3 significant figures, or 1 decimal place for angles in degrees, unless a different level of accuracy is specified in the question.
- Where a numerical value for the acceleration due to gravity (g) is needed, use 10 ms^{-2} .

INFORMATION

- The total mark for this paper is 50.
- The number of marks for each question or part question is shown in brackets [].

This document has **16** pages. Any blank pages are indicated.

BLANK PAGE

1 A particle P of mass 1 kg is moving along a straight line against a resistive force of magnitude $\frac{10\sqrt{v}}{(t+1)^2} \text{ N}$, where $v \text{ ms}^{-1}$ is the speed of P at time $t \text{ s}$. When $t = 0$, $v = 25$.

Find an expression for v in terms of t . [5]

.....

.....

.....

.....

.....

.....

.....

.....

.....

.....

.....

.....

.....

.....

.....

.....

.....

.....

.....

.....

.....

.....

.....

- 3 One end of a light elastic string, of natural length a and modulus of elasticity kmg , is attached to a fixed point A . The other end of the string is attached to a particle P of mass $4m$. The particle P hangs in equilibrium a distance x vertically below A .

(a) Show that $k = \frac{4a}{x-a}$. [1]

.....

.....

.....

.....

An additional particle, of mass $2m$, is now attached to P and the combined particle is released from rest at the original equilibrium position of P . When the combined particle has descended a distance $\frac{1}{3}a$, its speed is $\frac{1}{3}\sqrt{ga}$.

(b) Find x in terms of a . [6]

.....

.....

.....

.....

.....

.....

.....

.....

.....

.....

.....

.....

.....

.....

.....

.....

.....

.....

.....

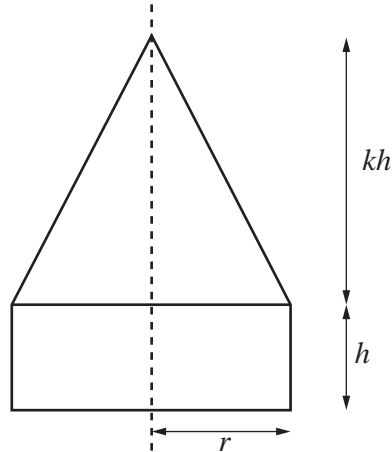
.....

.....

.....

.....

4



A uniform solid circular cone has vertical height kh and radius r . A uniform solid cylinder has height h and radius r . The base of the cone is joined to one of the circular faces of the cylinder so that the axes of symmetry of the two solids coincide (see diagram, which shows a cross-section). The cone and the cylinder are made of the same material.

- (a) Show that the distance of the centre of mass of the combined solid from the base of the cylinder is $\frac{h(k^2 + 4k + 6)}{4(3 + k)}$. [4]

.....

.....

.....

.....

.....

.....

.....

.....

.....

.....

.....

.....

.....

.....

.....

.....

.....

.....

.....

.....

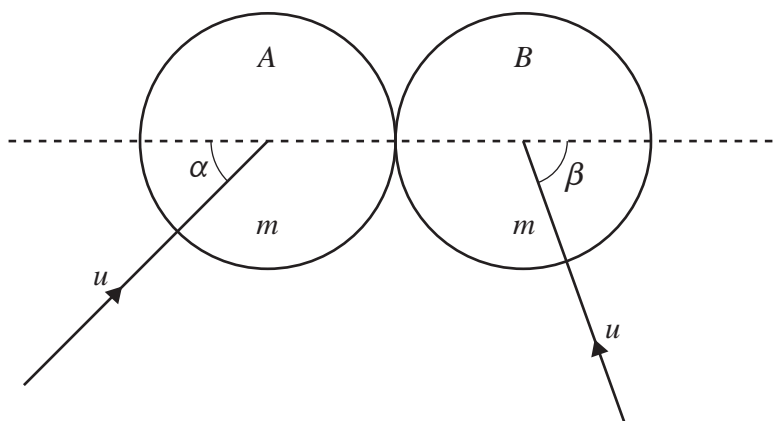
.....

.....

.....

Dotted lines for writing.

6



Two uniform smooth spheres A and B of equal radii each have mass m . The two spheres are each moving with speed u on a horizontal surface when they collide. Immediately before the collision, A 's direction of motion makes an angle α with the line of centres, and B 's direction of motion makes an angle β with the line of centres (see diagram). The coefficient of restitution between the spheres is $\frac{1}{3}$ and $2 \cos \beta = \cos \alpha$.

(a) Show that the direction of motion of A after the collision is perpendicular to the line of centres. [4]

.....

.....

.....

.....

.....

.....

.....

.....

.....

.....

.....

.....

.....

.....

.....

.....

.....

.....

.....

.....

.....

.....

.....

.....

.....

BLANK PAGE

Permission to reproduce items where third-party owned material protected by copyright is included has been sought and cleared where possible. Every reasonable effort has been made by the publisher (UCLES) to trace copyright holders, but if any items requiring clearance have unwittingly been included, the publisher will be pleased to make amends at the earliest possible opportunity.

To avoid the issue of disclosure of answer-related information to candidates, all copyright acknowledgements are reproduced online in the Cambridge Assessment International Education Copyright Acknowledgements Booklet. This is produced for each series of examinations and is freely available to download at www.cambridgeinternational.org after the live examination series.

Cambridge Assessment International Education is part of the Cambridge Assessment Group. Cambridge Assessment is the brand name of the University of Cambridge Local Examinations Syndicate (UCLES), which itself is a department of the University of Cambridge.