



**ADVANCED GCE
MATHEMATICS (MEI)**

Mechanics 4

4764

Candidates answer on the answer booklet.

OCR supplied materials:

- 8 page answer booklet (sent with general stationery)
- MEI Examination Formulae and Tables (MF2)

Other materials required:

- Scientific or graphical calculator

**Thursday 16 June 2011
Afternoon**

Duration: 1 hour 30 minutes



INSTRUCTIONS TO CANDIDATES

- Write your name, centre number and candidate number in the spaces provided on the answer booklet. Please write clearly and in capital letters.
- Use black ink. Pencil may be used for graphs and diagrams only.
- Read each question carefully. Make sure you know what you have to do before starting your answer.
- Answer **all** the questions.
- Do **not** write in the bar codes.
- You are permitted to use a scientific or graphical calculator in this paper.
- Final answers should be given to a degree of accuracy appropriate to the context.
- The acceleration due to gravity is denoted by $g \text{ m s}^{-2}$. Unless otherwise instructed, when a numerical value is needed, use $g = 9.8$.

INFORMATION FOR CANDIDATES

- The number of marks is given in brackets [] at the end of each question or part question.
- You are advised that an answer may receive **no marks** unless you show sufficient detail of the working to indicate that a correct method is being used.
- The total number of marks for this paper is **72**.
- This document consists of **4** pages. Any blank pages are indicated.

Section A (24 marks)

- 1 A raindrop of mass m falls vertically from rest under gravity. Initially the mass of the raindrop is m_0 . As it falls it loses mass by evaporation at a rate λm , where λ is a constant. Its motion is modelled by assuming that the evaporation produces no resultant force on the raindrop. The velocity of the raindrop is v at time t . The forces on the raindrop are its weight and a resistance force of magnitude kmv , where k is a constant.
- (i) Find m in terms of m_0 , λ and t . [2]
- (ii) Write down the equation of motion of the raindrop. Solve this differential equation and hence show that $v = \frac{g}{\lambda - k}(e^{(\lambda - k)t} - 1)$. [8]
- (iii) Find the velocity of the raindrop when it has lost half of its initial mass. [2]
- 2 A small ring of mass m can slide freely along a fixed smooth horizontal rod. A light elastic string of natural length a and stiffness k has one end attached to a point A on the rod and the other end attached to the ring. An identical elastic string has one end attached to the ring and the other end attached to a point B which is a distance a vertically above the rod and a horizontal distance $2a$ from the point A. The displacement of the ring from the vertical line through B is x , as shown in Fig. 2.

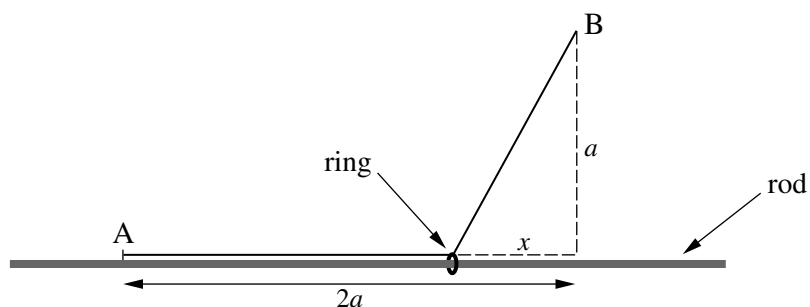


Fig. 2

- (i) Find an expression for V , the potential energy of the system when $0 < x < a$, and show that

$$\frac{dV}{dx} = 2kx - ka - \frac{kax}{\sqrt{a^2 + x^2}}. \quad [5]$$

- (ii) Show that $\frac{d^2V}{dx^2}$ is always positive. [4]
- (iii) Show that there is a position of equilibrium with $\frac{1}{2}a < x < a$. State, with a reason, whether it is stable or unstable. [3]

3

Section B (48 marks)

- 3 A car of mass 800 kg moves horizontally in a straight line with speed $v \text{ ms}^{-1}$ at time t seconds. While $v \leq 20$, the power developed by the engine is $8v^4 \text{ W}$. The total resistance force on the car is of magnitude $8v^2 \text{ N}$. Initially $v = 2$ and the car is at a point O. At time t s the displacement from O is x m.

(i) Find v in terms of x and show that when $v = 20$, $x = 100 \ln 1.9$. [10]

(ii) Find the relationship between t and x , and show that when $v = 20$, $t \approx 19.2$. [6]

The driving force is removed at the instant when v reaches 20.

(iii) For the subsequent motion, find v in terms of t . Calculate t when $v = 2$. [8]

- 4 In this question you may assume without proof the standard results in *Examination Formulae and Tables (MF2)* for

- the moment of inertia of a disc about an axis through its centre perpendicular to the disc,
- the position of the centre of mass of a solid uniform cone.

Fig. 4 shows a uniform cone of radius a and height $2a$, with its axis of symmetry on the x -axis and its vertex at the origin. A thin slice through the cone parallel to the base is at a distance x from the vertex.

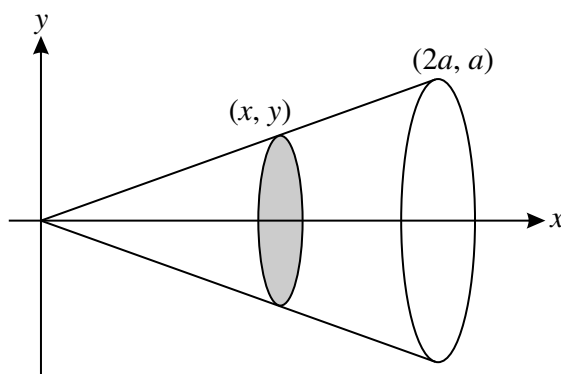


Fig. 4

The slice is taken to be a thin uniform disc of mass m .

(i) Write down the moment of inertia of the disc about the x -axis. Hence show that the moment of inertia of the disc about the y -axis is $\frac{17}{16}mx^2$. [6]

(ii) Hence show by integration that the moment of inertia of the cone about the y -axis is $\frac{51}{20}Ma^2$, where M is the mass of the cone. [You may assume without proof the formula for the volume of a cone.] [8]

The cone is now suspended so that it can rotate freely about a fixed, horizontal axis through its vertex. The axis of symmetry of the cone moves in a vertical plane perpendicular to the axis of rotation. The cone is released from rest when its axis of symmetry is at an acute angle α to the downward vertical. At time t , the angle the axis of symmetry makes with the downward vertical is θ .

(iii) Use an energy method to show that $\dot{\theta}^2 = \frac{20g}{17a}(\cos \theta - \cos \alpha)$. [5]

(iv) Hence, or otherwise, show that if α is small the cone performs approximate simple harmonic motion and find the period. [5]

THERE ARE NO QUESTIONS PRINTED ON THIS PAGE.



Copyright Information

OCR is committed to seeking permission to reproduce all third-party content that it uses in its assessment materials. OCR has attempted to identify and contact all copyright holders whose work is used in this paper. To avoid the issue of disclosure of answer-related information to candidates, all copyright acknowledgements are reproduced in the OCR Copyright Acknowledgements Booklet. This is produced for each series of examinations and is freely available to download from our public website (www.ocr.org.uk) after the live examination series.

If OCR has unwittingly failed to correctly acknowledge or clear any third-party content in this assessment material, OCR will be happy to correct its mistake at the earliest possible opportunity.

For queries or further information please contact the Copyright Team, First Floor, 9 Hills Road, Cambridge CB2 1GE.

OCR is part of the Cambridge Assessment Group; Cambridge Assessment is the brand name of University of Cambridge Local Examinations Syndicate (UCLES), which is itself a department of the University of Cambridge.