



Monday 23 January 2012 – Morning

A2 GCE MATHEMATICS

4730 Mechanics 3

QUESTION PAPER

Candidates answer on the Printed Answer Book.

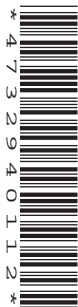
OCR supplied materials:

- Printed Answer Book 4730
- List of Formulae (MF1)

Other materials required:

- Scientific or graphical calculator

Duration: 1 hour 30 minutes



INSTRUCTIONS TO CANDIDATES

These instructions are the same on the Printed Answer Book and the Question Paper.

- The Question Paper will be found in the centre of the Printed Answer Book.
- Write your name, centre number and candidate number in the spaces provided on the Printed Answer Book. Please write clearly and in capital letters.
- **Write your answer to each question in the space provided in the Printed Answer Book.** Additional paper may be used if necessary but you must clearly show your candidate number, centre number and question number(s).
- Use black ink. HB pencil may be used for graphs and diagrams only.
- Answer **all** the questions.
- Read each question carefully. Make sure you know what you have to do before starting your answer.
- Do **not** write in the bar codes.
- You are permitted to use a scientific or graphical calculator in this paper.
- Give non-exact numerical answers correct to 3 significant figures unless a different degree of accuracy is specified in the question or is clearly appropriate.
- The acceleration due to gravity is denoted by $g \text{ ms}^{-2}$. Unless otherwise instructed, when a numerical value is needed, use $g = 9.8$.

INFORMATION FOR CANDIDATES

This information is the same on the Printed Answer Book and the Question Paper.

- The number of marks is given in brackets [] at the end of each question or part question on the Question Paper.
- **You are reminded of the need for clear presentation in your answers.**
- The total number of marks for this paper is **72**.
- The Printed Answer Book consists of **12** pages. The Question Paper consists of **4** pages. Any blank pages are indicated.

INSTRUCTION TO EXAMS OFFICER/INVIGILATOR

- Do not send this Question Paper for marking; it should be retained in the centre or recycled. Please contact OCR Copyright should you wish to re-use this document.

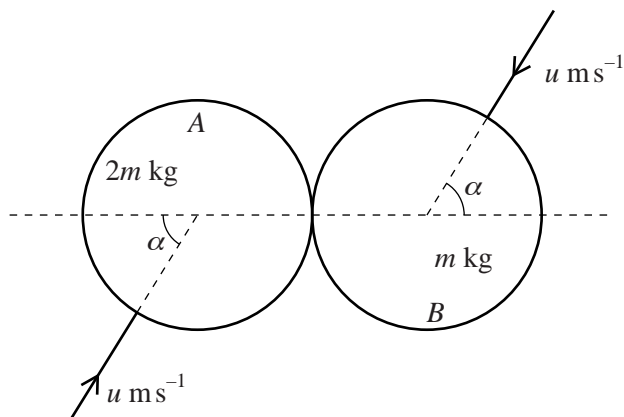
- 1 A particle P of mass 0.05 kg is moving on a smooth horizontal surface with speed 2 ms^{-1} , when it is struck by a horizontal blow in a direction perpendicular to its direction of motion. The magnitude of the impulse of the blow is $I\text{ N s}$. The speed of P after the blow is 2.5 ms^{-1} .

(i) Find the value of I . [4]

Immediately before the blow P is moving parallel to a smooth vertical wall. After the blow P hits the wall and rebounds from the wall with speed $\sqrt{5}\text{ ms}^{-1}$.

(ii) Find the coefficient of restitution between P and the wall. [4]

2



Two uniform smooth spheres A and B , of equal radius, have masses $2m\text{ kg}$ and $m\text{ kg}$ respectively. They are moving in opposite directions on a horizontal surface and they collide. Immediately before the collision, each sphere has speed $u\text{ ms}^{-1}$ in a direction making an angle α with the line of centres (see diagram). The coefficient of restitution between A and B is 0.5 .

(i) Show that the speed of B is unchanged as a result of the collision. [5]

(ii) Find the direction of motion of each of the spheres after the collision. [3]

- 3 A particle P of mass 0.3 kg is projected horizontally with speed $u\text{ ms}^{-1}$ from a fixed point O on a smooth horizontal surface. At time $t\text{ s}$ after projection P is $x\text{ m}$ from O and is moving with speed $v\text{ ms}^{-1}$. There is a force of magnitude $1.2v^3\text{ N}$ resisting the motion of P .

(i) Find an expression for $\frac{dv}{dx}$ in terms of v and hence show that $v = \frac{u}{4ux + 1}$. [5]

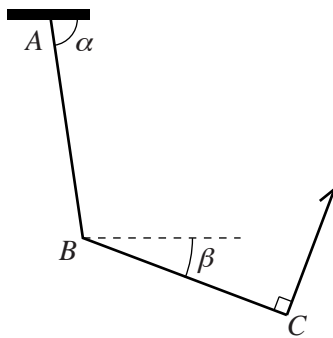
(ii) Given that $x = 2$ when $t = 9$ find the value of u . [4]

- 4 One end of a light elastic string, of natural length 0.75 m and modulus of elasticity 44.1 N , is attached to a fixed point O . A particle P of mass 1.8 kg is attached to the other end of the string. P is released from rest at O and falls vertically. Assuming there is no air resistance, find

(i) the extension of the string when P is at its lowest position, [4]

(ii) the acceleration of P at its lowest position. [4]

5



Two uniform rods AB and BC , each of length $2L$ m and of weight 84.5 N, are freely jointed at B , and AB is freely jointed to a fixed point at A . The rods are held in equilibrium in a vertical plane by a light string attached at C and perpendicular to BC . The rods AB and BC make angles α and β to the horizontal, respectively (see diagram). It is given that $\cos \beta = \frac{12}{13}$.

(i) Find the tension in the string. [3]

(ii) Hence show that the force acting on BC at B has horizontal component of magnitude 15 N and vertical component of magnitude 48.5 N, and state the direction of the component in each case. [4]

(iii) Find α . [4]

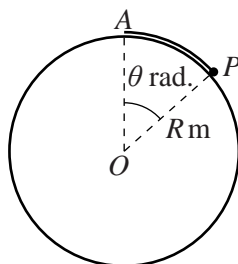
6 A particle P starts from rest at a point A and moves in a straight line with simple harmonic motion. At time t s after the motion starts, P 's displacement from a point O on the line is x m towards A . The particle P returns to A for the first time when $t = 0.4\pi$. The maximum speed of P is 4 m s^{-1} and occurs when P passes through O .

(i) Find the distance OA . [4]

(ii) Find the value of x and the velocity of P when $t = 1$. [4]

(iii) Find the number of occasions in the interval $0 < t < 1$ at which P 's speed is the same as that when $t = 1$, and find the corresponding values of x and t . [5]

[Question 7 is printed overleaf.]



One end of a light elastic string, of natural length $\frac{2}{3}Rm$ and with modulus of elasticity $1.2mg$ N, is attached to the highest point A of a smooth fixed sphere with centre O and radius Rm . A particle P of mass m kg is attached to the other end of the string and is in contact with the surface of the sphere, where the angle AOP is equal to θ radians (see diagram).

- (i) Given that P is in equilibrium at the point where $\theta = \alpha$, show that $1.8\alpha - \sin \alpha - 1.2 = 0$. Hence show that $\alpha = 1.18$ correct to 3 significant figures. [7]

P is now released from rest at the point of the surface of the sphere where $\theta = \frac{2}{3}$, and starts to move downwards on the surface. For an instant when $\theta = \alpha$,

- (ii) state the direction of the acceleration of P , [1]
- (iii) find the magnitude of the acceleration of P . [7]



Copyright Information

OCR is committed to seeking permission to reproduce all third-party content that it uses in its assessment materials. OCR has attempted to identify and contact all copyright holders whose work is used in this paper. To avoid the issue of disclosure of answer-related information to candidates, all copyright acknowledgements are reproduced in the OCR Copyright Acknowledgements Booklet. This is produced for each series of examinations and is freely available to download from our public website (www.ocr.org.uk) after the live examination series. If OCR has unwittingly failed to correctly acknowledge or clear any third-party content in this assessment material, OCR will be happy to correct its mistake at the earliest possible opportunity.

For queries or further information please contact the Copyright Team, First Floor, 9 Hills Road, Cambridge CB2 1GE.

OCR is part of the Cambridge Assessment Group; Cambridge Assessment is the brand name of University of Cambridge Local Examinations Syndicate (UCLES), which is itself a department of the University of Cambridge.