

General Certificate of Education  
January 2008  
Advanced Subsidiary Examination



**MATHEMATICS**  
**Unit Further Pure 1**

**MFP1**

Friday 25 January 2008 1.30 pm to 3.00 pm

**For this paper you must have:**

- an 8-page answer book
- the blue AQA booklet of formulae and statistical tables
- an insert for use in Question 7 (enclosed).

You may use a graphics calculator.

Time allowed: 1 hour 30 minutes

**Instructions**

- Use blue or black ink or ball-point pen. Pencil should only be used for drawing.
- Write the information required on the front of your answer book. The *Examining Body* for this paper is AQA. The *Paper Reference* is MFP1.
- Answer **all** questions.
- Show all necessary working; otherwise marks for method may be lost.
- Fill in the boxes at the top of the insert.

**Information**

- The maximum mark for this paper is 75.
- The marks for questions are shown in brackets.

**Advice**

- Unless stated otherwise, you may quote formulae, without proof, from the booklet.

---

Answer **all** questions.

---

- 1 It is given that  $z_1 = 2 + i$  and that  $z_1^*$  is the complex conjugate of  $z_1$ .

Find the real numbers  $x$  and  $y$  such that

$$x + 3iy = z_1 + 4iz_1^* \quad (4 \text{ marks})$$

- 2 A curve satisfies the differential equation

$$\frac{dy}{dx} = 2^x$$

Starting at the point  $(1, 4)$  on the curve, use a step-by-step method with a step length of 0.01 to estimate the value of  $y$  at  $x = 1.02$ . Give your answer to six significant figures. (5 marks)

- 3 Find the general solution of the equation

$$\tan 4\left(x - \frac{\pi}{8}\right) = 1$$

giving your answer in terms of  $\pi$ .

(5 marks)

- 4 (a) Find

$$\sum_{r=1}^n (r^3 - 6r)$$

expressing your answer in the form

$$kn(n+1)(n+p)(n+q)$$

where  $k$  is a fraction and  $p$  and  $q$  are integers.

(5 marks)

- (b) It is given that

$$S = \sum_{r=1}^{1000} (r^3 - 6r)$$

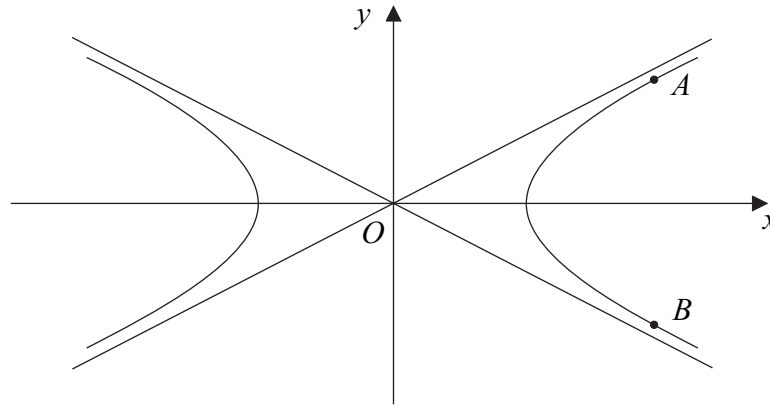
**Without** calculating the value of  $S$ , show that  $S$  is a multiple of 2008.

(2 marks)

5 The diagram shows the hyperbola

$$\frac{x^2}{4} - y^2 = 1$$

and its asymptotes.



(a) Write down the equations of the two asymptotes. (2 marks)

(b) The points on the hyperbola for which  $x = 4$  are denoted by  $A$  and  $B$ .

Find, in surd form, the  $y$ -coordinates of  $A$  and  $B$ . (2 marks)

(c) The hyperbola and its asymptotes are translated by two units in the positive  $y$  direction.

Write down:

(i) the  $y$ -coordinates of the image points of  $A$  and  $B$  under this translation; (1 mark)

(ii) the equations of the hyperbola and the asymptotes after the translation. (3 marks)

**Turn over for the next question**

**Turn over ►**

6 The matrix  $\mathbf{M}$  is defined by

$$\mathbf{M} = \begin{bmatrix} \sqrt{3} & 3 \\ 3 & -\sqrt{3} \end{bmatrix}$$

(a) (i) Show that

$$\mathbf{M}^2 = p\mathbf{I}$$

where  $p$  is an integer and  $\mathbf{I}$  is the  $2 \times 2$  identity matrix. *(3 marks)*

(ii) Show that the matrix  $\mathbf{M}$  can be written in the form

$$q \begin{bmatrix} \cos 60^\circ & \sin 60^\circ \\ \sin 60^\circ & -\cos 60^\circ \end{bmatrix}$$

where  $q$  is a real number. Give the value of  $q$  in surd form. *(3 marks)*

(b) The matrix  $\mathbf{M}$  represents a combination of an enlargement and a reflection.

Find:

(i) the scale factor of the enlargement; *(1 mark)*

(ii) the equation of the mirror line of the reflection. *(1 mark)*

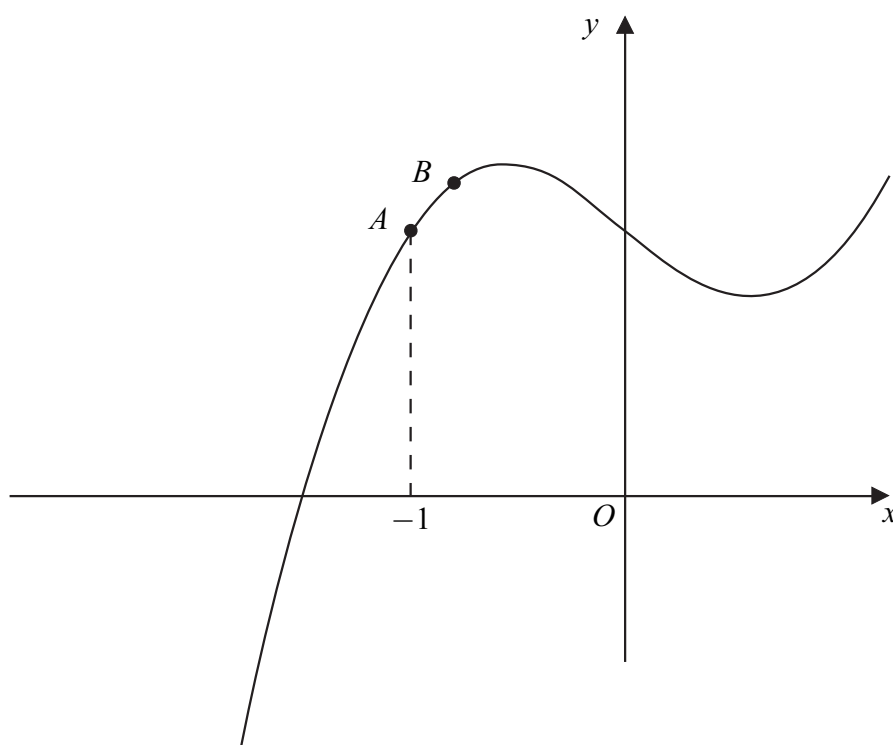
(c) Describe fully the geometrical transformation represented by  $\mathbf{M}^4$ . *(2 marks)*

7 [Figure 1, printed on the insert, is provided for use in this question.]

The diagram shows the curve

$$y = x^3 - x + 1$$

The points  $A$  and  $B$  on the curve have  $x$ -coordinates  $-1$  and  $-1 + h$  respectively.



- (a) (i) Show that the  $y$ -coordinate of the point  $B$  is

$$1 + 2h - 3h^2 + h^3 \quad (3 \text{ marks})$$

- (ii) Find the gradient of the chord  $AB$  in the form

$$p + qh + rh^2$$

where  $p$ ,  $q$  and  $r$  are integers. (3 marks)

- (iii) Explain how your answer to part (a)(ii) can be used to find the gradient of the tangent to the curve at  $A$ . State the value of this gradient. (2 marks)

- (b) The equation  $x^3 - x + 1 = 0$  has one real root,  $\alpha$ .

- (i) Taking  $x_1 = -1$  as a first approximation to  $\alpha$ , use the Newton-Raphson method to find a second approximation,  $x_2$ , to  $\alpha$ . (2 marks)

- (ii) On **Figure 1**, draw a straight line to illustrate the Newton-Raphson method as used in part (b)(i). Show the points  $(x_2, 0)$  and  $(\alpha, 0)$  on your diagram.

(2 marks)

**Turn over** ►

- 8 (a) (i) It is given that  $\alpha$  and  $\beta$  are the roots of the equation

$$x^2 - 2x + 4 = 0$$

Without solving this equation, show that  $\alpha^3$  and  $\beta^3$  are the roots of the equation

$$x^2 + 16x + 64 = 0 \quad (6 \text{ marks})$$

- (ii) State, giving a reason, whether the roots of the equation

$$x^2 + 16x + 64 = 0$$

are real and equal, real and distinct, or non-real. (2 marks)

- (b) Solve the equation

$$x^2 - 2x + 4 = 0 \quad (2 \text{ marks})$$

- (c) Use your answers to parts (a) and (b) to show that

$$(1 + i\sqrt{3})^3 = (1 - i\sqrt{3})^3 \quad (2 \text{ marks})$$

- 9 A curve  $C$  has equation

$$y = \frac{2}{x(x-4)}$$

- (a) Write down the equations of the three asymptotes of  $C$ . (3 marks)

- (b) The curve  $C$  has one stationary point. By considering an appropriate quadratic equation, find the coordinates of this stationary point.

(No credit will be given for solutions based on differentiation.) (6 marks)

- (c) Sketch the curve  $C$ . (3 marks)

**END OF QUESTIONS**

**There are no questions printed on this page**

**There are no questions printed on this page**



Surname		Other Names								
Centre Number						Candidate Number				
Candidate Signature										

General Certificate of Education  
January 2008  
Advanced Subsidiary Examination



**MATHEMATICS**  
**Unit Further Pure 1**

**MFP1**

## Insert

Insert for use in **Question 7**.

Fill in the boxes at the top of this page.

Fasten this insert securely to your answer book.

**Turn over for Figure 1**

**Turn over ►**

**Figure 1 (for use in Question 7)**