

Write your name here

Surname

Other names

**Pearson**  
**Edexcel GCE**

Centre Number

--	--	--	--	--

Candidate Number

--	--	--	--

# Core Mathematics C3

## Advanced

Tuesday 19 June 2018 – Afternoon

**Time: 1 hour 30 minutes**

Paper Reference

**6665/01****You must have:**

Mathematical Formulae and Statistical Tables (Pink)

Total Marks

--

**Candidates may use any calculator allowed by the regulations of the Joint Council for Qualifications. Calculators must not have the facility for symbolic algebra manipulation, differentiation and integration, or have retrievable mathematical formulae stored in them.**

**Instructions**

- Use **black** ink or ball-point pen.
- If pencil is used for diagrams/sketches/graphs it must be dark (HB or B). Coloured pencils and highlighter pens must not be used.
- **Fill in the boxes** at the top of this page with your name, centre number and candidate number.
- Answer **all** questions and ensure that your answers to parts of questions are clearly labelled.
- Answer the questions in the spaces provided  
– *there may be more space than you need.*
- You should show sufficient working to make your methods clear. Answers without working may not gain full credit.
- When a calculator is used, the answer should be given to an appropriate degree of accuracy.

**Information**

- The total mark for this paper is 75.
- The marks for **each** question are shown in brackets  
– *use this as a guide as to how much time to spend on each question.*

**Advice**

- Read each question carefully before you start to answer it.
- Try to answer every question.
- Check your answers if you have time at the end.

Turn over ►

P51520A

©2018 Pearson Education Ltd.

1/1/1/1/



Pearson

Leave  
blank

1. Given  $y = 2x(3x - 1)^5$ ,

(a) find  $\frac{dy}{dx}$ , giving your answer as a single fully factorised expression. (4)

(b) Hence find the set of values of  $x$  for which  $\frac{dy}{dx} \leq 0$  (2)

---

---

---

---

---

---

---

---

---

---

---

---

---

---

---

---

---

---

---

---

---

---

---

---

---

---

---

---

---

---

DO NOT WRITE IN THIS AREA

DO NOT WRITE IN THIS AREA

DO NOT WRITE IN THIS AREA











DO NOT WRITE IN THIS AREA

Leave blank

**Question 2 continued**

Lined area for writing the answer to Question 2.

(Total 7 marks)

Q2



3. The value of a car is modelled by the formula

$$V = 16\,000e^{-kt} + A, \quad t \geq 0, t \in \mathbb{R}$$

where  $V$  is the value of the car in pounds,  $t$  is the age of the car in years, and  $k$  and  $A$  are positive constants.

Given that the value of the car is £17 500 when new and £13 500 two years later,

- (a) find the value of  $A$ , (1)

- (b) show that  $k = \ln\left(\frac{2}{\sqrt{3}}\right)$  (4)

- (c) Find the age of the car, in years, when the value of the car is £6000

Give your answer to 2 decimal places. (4)

---

---

---

---

---

---

---

---

---

---

---

---

---

---

---

---

---

---

---

---

---

---

---

---

---

---











4.

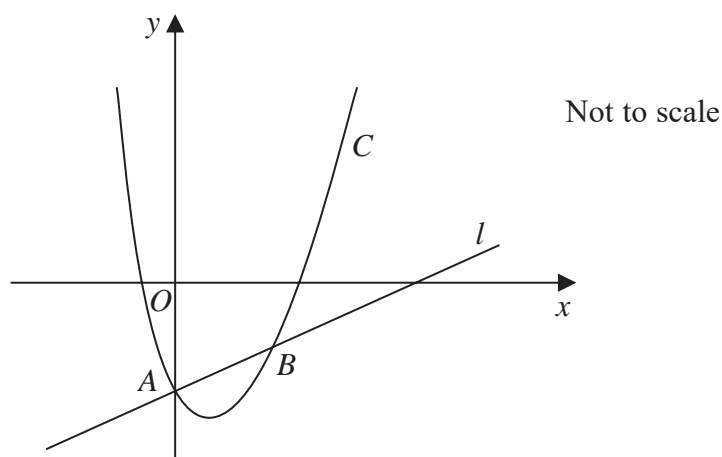


Figure 1

Figure 1 shows a sketch of part of the curve  $C$  with equation

$$y = e^{-2x} + x^2 - 3$$

The curve  $C$  crosses the  $y$ -axis at the point  $A$ .

The line  $l$  is the normal to  $C$  at the point  $A$ .

- (a) Find the equation of  $l$ , writing your answer in the form  $y = mx + c$ , where  $m$  and  $c$  are constants.

(5)

The line  $l$  meets  $C$  again at the point  $B$ , as shown in Figure 1.

- (b) Show that the  $x$  coordinate of  $B$  is a solution of

$$x = \sqrt{1 + \frac{1}{2}x - e^{-2x}}$$

(2)

Using the iterative formula

$$x_{n+1} = \sqrt{1 + \frac{1}{2}x_n - e^{-2x_n}}$$

with  $x_1 = 1$

- (c) find  $x_2$  and  $x_3$  to 3 decimal places.

(2)

---



---



---



---



---



**Question 4 continued**

Lined area for writing the answer to Question 4.

DO NOT WRITE IN THIS AREA



Leave blank

**Question 4 continued**

A large area with horizontal lines for writing answers.

DO NOT WRITE IN THIS AREA

DO NOT WRITE IN THIS AREA

DO NOT WRITE IN THIS AREA



DO NOT WRITE IN THIS AREA

DO NOT WRITE IN THIS AREA

DO NOT WRITE IN THIS AREA

Leave  
blank

**Question 4 continued**

[Lined writing area for the answer to Question 4]

**(Total 9 marks)**

Q4



P 5 1 5 2 0 A 0 1 5 3 6

5.

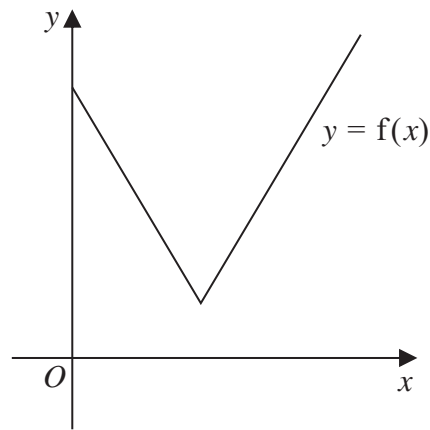


Figure 2

Figure 2 shows part of the graph with equation  $y = f(x)$ , where

$$f(x) = 2|5 - x| + 3, \quad x \geq 0$$

Given that the equation  $f(x) = k$ , where  $k$  is a constant, has exactly one root,

(a) state the set of possible values of  $k$ .

(2)

(b) Solve the equation  $f(x) = \frac{1}{2}x + 10$

(4)

The graph with equation  $y = f(x)$  is transformed onto the graph with equation  $y = 4f(x - 1)$ . The vertex on the graph with equation  $y = 4f(x - 1)$  has coordinates  $(p, q)$ .

(c) State the value of  $p$  and the value of  $q$ .

(2)

---

---

---

---

---

---

---

---

---

---

---

---

---

---

---

---

---

---

---

---

---

---

---

---









Leave blank

Question 5 continued

DO NOT WRITE IN THIS AREA

DO NOT WRITE IN THIS AREA

DO NOT WRITE IN THIS AREA

Q5

(Total 8 marks)



Leave  
blank

6. (i) Using the identity for  $\tan(A \pm B)$ , solve, for  $-90^\circ < x < 90^\circ$ ,

$$\frac{\tan 2x + \tan 32^\circ}{1 - \tan 2x \tan 32^\circ} = 5$$

Give your answers, in degrees, to 2 decimal places.

(4)

- (ii) (a) Using the identity for  $\tan(A \pm B)$ , show that

$$\tan(3\theta - 45^\circ) \equiv \frac{\tan 3\theta - 1}{1 + \tan 3\theta}, \quad \theta \neq (60n + 45)^\circ, n \in \mathbb{Z}$$

(2)

- (b) Hence solve, for  $0 < \theta < 180^\circ$ ,

$$(1 + \tan 3\theta) \tan(\theta + 28^\circ) = \tan 3\theta - 1$$

(5)

DO NOT WRITE IN THIS AREA

DO NOT WRITE IN THIS AREA

DO NOT WRITE IN THIS AREA













Leave  
blank

**Question 7 continued**

DO NOT WRITE IN THIS AREA

DO NOT WRITE IN THIS AREA

DO NOT WRITE IN THIS AREA

Ruled area for writing the answer to Question 7.



P 5 1 5 2 0 A 0 2 5 3 6



Leave blank

**Question 7 continued**

Lined writing area for the answer to Question 7.

DO NOT WRITE IN THIS AREA

DO NOT WRITE IN THIS AREA

DO NOT WRITE IN THIS AREA

Q7

**(Total 9 marks)**



Leave blank

8. (a) By writing  $\sec \theta = \frac{1}{\cos \theta}$ , show that  $\frac{d}{d\theta}(\sec \theta) = \sec \theta \tan \theta$  (2)

(b) Given that

$$x = e^{\sec y} \quad x > e, \quad 0 < y < \frac{\pi}{2}$$

show that

$$\frac{dy}{dx} = \frac{1}{x\sqrt{g(x)}}, \quad x > e$$

where  $g(x)$  is a function of  $\ln x$ . (5)

---

---

---

---

---

---

---

---

---

---

---

---

---

---

---

---

---

---

---

---

---

---

---

---

---

DO NOT WRITE IN THIS AREA

DO NOT WRITE IN THIS AREA

DO NOT WRITE IN THIS AREA







Leave blank

Question 8 continued

Lined writing area for the response to Question 8.

Q8

(Total 7 marks)

DO NOT WRITE IN THIS AREA

DO NOT WRITE IN THIS AREA

DO NOT WRITE IN THIS AREA



P 5 1 5 2 0 A 0 3 1 3 6

9. (a) Express  $\sin \theta - 2 \cos \theta$  in the form  $R \sin(\theta - \alpha)$ , where  $R > 0$  and  $0 < \alpha < \frac{\pi}{2}$

Give the exact value of  $R$  and the value of  $\alpha$ , in radians, to 3 decimal places.

(3)

$$M(\theta) = 40 + (3 \sin \theta - 6 \cos \theta)^2$$

- (b) Find

- (i) the maximum value of  $M(\theta)$ ,
- (ii) the smallest value of  $\theta$ , in the range  $0 < \theta \leq 2\pi$ , at which the maximum value of  $M(\theta)$  occurs.

(3)

$$N(\theta) = \frac{30}{5 + 2(\sin 2\theta - 2 \cos 2\theta)^2}$$

- (c) Find

- (i) the maximum value of  $N(\theta)$ ,
- (ii) the largest value of  $\theta$ , in the range  $0 < \theta \leq 2\pi$ , at which the maximum value of  $N(\theta)$  occurs.

(3)

*(Solutions based entirely on graphical or numerical methods are not acceptable.)*

---

---

---

---

---

---

---

---

---

---

---

---

---

---

---

---

---

---

---

---

---

---

---

---

DO NOT WRITE IN THIS AREA

DO NOT WRITE IN THIS AREA

DO NOT WRITE IN THIS AREA







Leave blank

Question 9 continued

A series of horizontal lines for writing, spanning the width of the page below the question header.

DO NOT WRITE IN THIS AREA

DO NOT WRITE IN THIS AREA

DO NOT WRITE IN THIS AREA



Leave blank

**Question 9 continued**

Lined area for writing the answer to Question 9 continued.

DO NOT WRITE IN THIS AREA

DO NOT WRITE IN THIS AREA

DO NOT WRITE IN THIS AREA



P 5 1 5 2 0 A 0 3 5 3 6

Leave blank

Question 9 continued

Handwriting lines for question 9.

(Total 9 marks)

Q9

**TOTAL FOR PAPER: 75 MARKS**

**END**

DO NOT WRITE IN THIS AREA

DO NOT WRITE IN THIS AREA

DO NOT WRITE IN THIS AREA

