

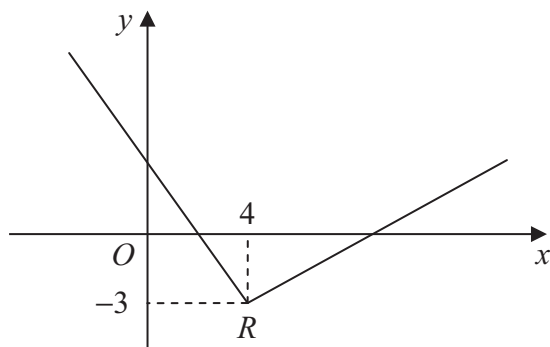






Leave blank

3.



**Figure 1**

Figure 1 shows part of the graph of  $y = f(x)$ ,  $x \in \mathbb{R}$ .

The graph consists of two line segments that meet at the point  $R(4, -3)$ , as shown in Figure 1.

Sketch, on separate diagrams, the graphs of

(a)  $y = 2f(x+4)$ , (3)

(b)  $y = |f(-x)|$ . (3)

On each diagram, show the coordinates of the point corresponding to  $R$ .



















