











5.

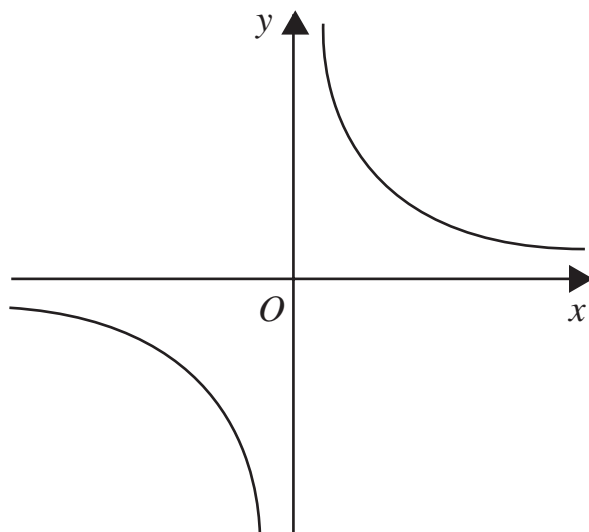
**Figure 1**

Figure 1 shows a sketch of the curve with equation  $y = \frac{3}{x}$ ,  $x \neq 0$ .

- (a) On a separate diagram, sketch the curve with equation  $y = \frac{3}{x+2}$ ,  $x \neq -2$ ,  
showing the coordinates of any point at which the curve crosses a coordinate axis. **(3)**
- (b) Write down the equations of the asymptotes of the curve in part (a). **(2)**





















