

Please check the examination details below before entering your candidate information

Candidate surname

Other names

**Pearson Edexcel**  
International  
Advanced Level

Centre Number

--	--	--	--	--

Candidate Number

--	--	--	--

**Tuesday 8 January 2019**

Morning (Time: 2 hours 30 minutes)

Paper Reference **WMA01/01**

**Core Mathematics C12**  
Advanced Subsidiary

**You must have:**

Mathematical Formulae and Statistical Tables (Blue)

Total Marks

**Candidates may use any calculator allowed by the regulations of the Joint Council for Qualifications. Calculators must not have the facility for symbolic algebra manipulation, differentiation and integration, or have retrievable mathematical formulae stored in them.**

### Instructions

- Use **black** ink or ball-point pen.
- If pencil is used for diagrams/sketches/graphs it must be dark (HB or B). Coloured pencils and highlighter pens must not be used.
- **Fill in the boxes** at the top of this page with your name, centre number and candidate number.
- Answer **all** questions and ensure that your answers to parts of questions are clearly labelled.
- Answer the questions in the spaces provided  
– *there may be more space than you need.*
- You should show sufficient working to make your methods clear. Answers without working may not gain full credit.
- When a calculator is used, the answer should be given to an appropriate degree of accuracy.

### Information

- The total mark for this paper is 125.
- The marks for **each** question are shown in brackets  
– *use this as a guide as to how much time to spend on each question.*

### Advice

- Read each question carefully before you start to answer it.
- Try to answer every question.
- Check your answers if you have time at the end.

Turn over ►

P54944A

©2019 Pearson Education Ltd.

1/1/1



  
Pearson

















Leave blank

**Question 4 continued**

Lined area for writing the answer to Question 4.

DO NOT WRITE IN THIS AREA

DO NOT WRITE IN THIS AREA

DO NOT WRITE IN THIS AREA

**Q4**

**(Total 6 marks)**



P 5 4 9 4 4 A 0 9 4 8





Leave  
blank

6. (a) Sketch the graph of  $y = 1 + \cos x$ ,  $0 \leq x \leq 2\pi$

Show on your sketch the coordinates of the points where your graph meets the coordinate axes.

**(3)**

- (b) Use the trapezium rule, with 6 strips of equal width, to find an approximate value for

$$\int_0^{2\pi} (1 + \cos x) dx$$

**(4)**

DO NOT WRITE IN THIS AREA

DO NOT WRITE IN THIS AREA

DO NOT WRITE IN THIS AREA









Leave  
blank

8. Given  $k > 3$  and

$$\int_3^k \left( 2x + \frac{6}{x^2} \right) dx = 10k$$

show that  $k^3 - 10k^2 - 7k - 6 = 0$

(5)

DO NOT WRITE IN THIS AREA

DO NOT WRITE IN THIS AREA

DO NOT WRITE IN THIS AREA











10.

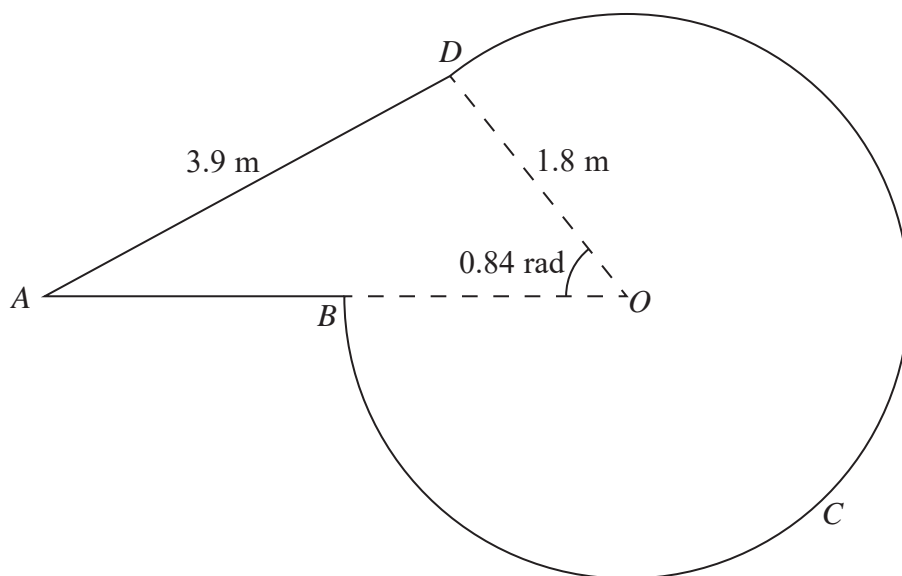
Diagram not  
drawn to scale

Figure 1

Figure 1 shows the design for a shop sign  $ABCD$ .

The sign consists of a triangle  $AOD$  joined to a sector of a circle  $DOBCD$  with radius 1.8 m and centre  $O$ .

The points  $A$ ,  $B$  and  $O$  lie on a straight line.

Given that  $AD = 3.9$  m and angle  $BOD$  is 0.84 radians,

- (a) calculate the size of angle  $DAO$ , giving your answer in radians to 3 decimal places. (2)
- (b) Show that, to one decimal place, the length of  $AO$  is 4.9 m. (3)
- (c) Find, in  $\text{m}^2$ , the area of the shop sign, giving your answer to one decimal place. (3)
- (d) Find, in m, the perimeter of the shop sign, giving your answer to one decimal place. (3)

---



---



---



---



---



---

DO NOT WRITE IN THIS AREA

DO NOT WRITE IN THIS AREA

DO NOT WRITE IN THIS AREA



















Leave blank

12. Karen is going to raise money for a charity.

She aims to cycle a **total** distance of 1000 km over a number of days.

On day one she cycles 25 km.

She increases the distance that she cycles each day by 10% of the distance cycled on the previous day, until she reaches the total distance of 1000 km.

She reaches the **total** distance of 1000 km on day  $N$ , where  $N$  is a positive integer.

(a) Find the value of  $N$ . (4)

On day one, 50 people donated money to the charity. Each day, 20 more people donated to the charity than did so on the previous day, so that 70 people donated money on day two, 90 people donated money on day three, and so on.

(b) Find the number of people who donated to the charity on day fifteen. (2)

Each day, the donation given by each person was £5

(c) Find the total amount of money donated by the end of day fifteen. (3)

---

---

---

---

---

---

---

---

---

---

---

---

---

---

---

---

---

---

---

---

---

---

---

---

DO NOT WRITE IN THIS AREA

DO NOT WRITE IN THIS AREA

DO NOT WRITE IN THIS AREA







DO NOT WRITE IN THIS AREA

DO NOT WRITE IN THIS AREA

DO NOT WRITE IN THIS AREA

Leave  
blank

**Question 12 continued**

*(This area contains horizontal lines for the student's answer.)*

Q12

**(Total 9 marks)**



Leave blank

13.  $f(x) = 3x^3 + 3x^2 + cx + 12$ , where  $c$  is a constant

Given that  $(x + 3)$  is a factor of  $f(x)$ ,

(a) show that  $c = -14$  (2)

(b) Write  $f(x)$  in the form  $f(x) = (x + 3)Q(x)$  where  $Q(x)$  is a quadratic function. (2)

(c) Use the answer to part (b) to prove that the equation  $f(x) = 0$  has only one real solution. (2)

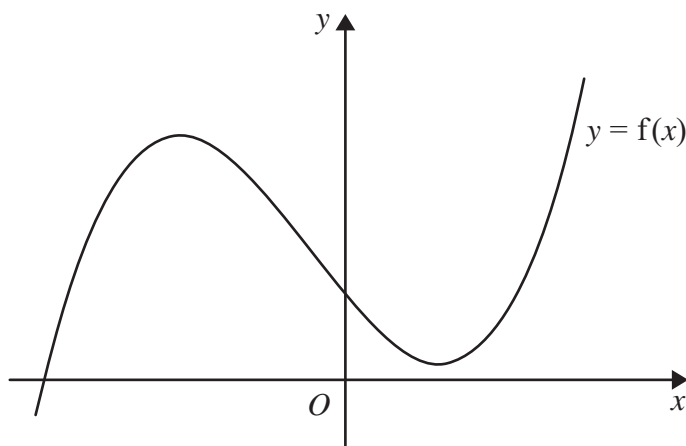


Figure 2

Figure 2 shows a sketch of the curve with equation  $y = f(x)$ ,  $x \in \mathbb{R}$ .

On **separate** diagrams sketch the curve with equation

(d) (i)  $y = f(3x)$

(ii)  $y = -f(x)$

On each diagram show clearly the coordinates of the points where the curve crosses the coordinate axes.

(4)

---

---

---

---

---

---

---

---

DO NOT WRITE IN THIS AREA

DO NOT WRITE IN THIS AREA

DO NOT WRITE IN THIS AREA







Leave  
blank

**Question 13 continued**

DO NOT WRITE IN THIS AREA

DO NOT WRITE IN THIS AREA

DO NOT WRITE IN THIS AREA





Leave blank

14. In this question solutions based entirely on graphical or numerical methods are not acceptable.

(i) Solve, for  $-180^\circ \leq x < 180^\circ$ , the equation

$$\sin(x + 60^\circ) = -0.4$$

giving your answers, in degrees, to one decimal place.

(4)

(ii) (a) Show that the equation

$$2 \sin \theta \tan \theta - 3 = \cos \theta$$

can be written in the form

$$3 \cos^2 \theta + 3 \cos \theta - 2 = 0$$

(3)

(b) Hence solve, for  $0 \leq \theta < 360^\circ$ , the equation

$$2 \sin \theta \tan \theta - 3 = \cos \theta$$

showing each stage of your working and giving your answers, in degrees, to one decimal place.

(4)

---

---

---

---

---

---

---

---

---

---

---

---

---

---

---

---

---

---

---

---

---

---

---

---

---

---

DO NOT WRITE IN THIS AREA

DO NOT WRITE IN THIS AREA

DO NOT WRITE IN THIS AREA









15.

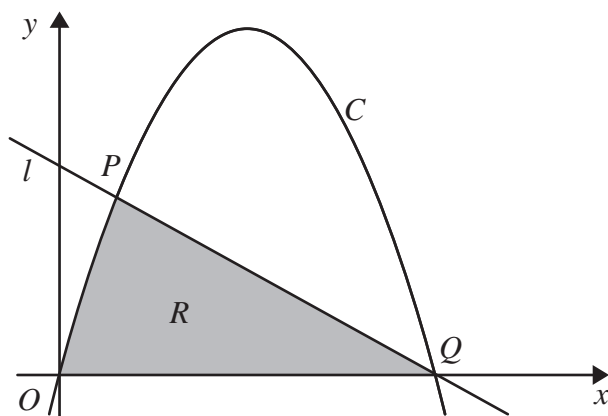


Figure 3

The straight line  $l$  with equation  $y = 5 - 3x$  cuts the curve  $C$ , with equation  $y = 20x - 12x^2$ , at the points  $P$  and  $Q$ , as shown in Figure 3.

- (a) Use algebra to find the exact coordinates of the points  $P$  and  $Q$ . (5)

The finite region  $R$ , shown shaded in Figure 3, is bounded by the line  $l$ , the  $x$ -axis and the curve  $C$ .

- (b) Use calculus to find the exact area of  $R$ . (6)

---

---

---

---

---

---

---

---

---

---

---

---

---

---

---

---

---

---

---

---

---

---

---

---

---

DO NOT WRITE IN THIS AREA

DO NOT WRITE IN THIS AREA

DO NOT WRITE IN THIS AREA





Leave blank

**Question 15 continued**

Lined area for writing the answer to Question 15.

DO NOT WRITE IN THIS AREA

DO NOT WRITE IN THIS AREA

DO NOT WRITE IN THIS AREA







16.

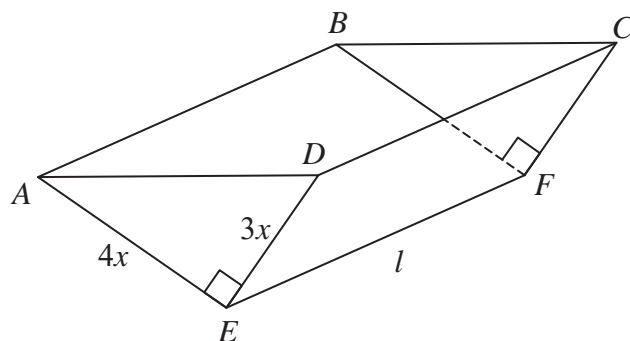


Figure 4

Figure 4 shows the design for a container in the shape of a hollow triangular prism.

The container is **open at the top**, which is labelled  $ABCD$ .

The sides of the container,  $ABFE$  and  $DCFE$ , are rectangles.

The ends of the container,  $ADE$  and  $BCF$ , are congruent right-angled triangles, as shown in Figure 4.

The ends of the container are vertical and the edge  $EF$  is horizontal.

The edges  $AE$ ,  $DE$  and  $EF$  have lengths  $4x$  metres,  $3x$  metres and  $l$  metres respectively.

Given that the container has a capacity of  $0.75 \text{ m}^3$  and is made of material of negligible thickness,

(a) show that the internal surface area of the container,  $S \text{ m}^2$ , is given by

$$S = 12x^2 + \frac{7}{8x} \quad (5)$$

(b) Use calculus to find the value of  $x$ , for which  $S$  is a minimum.

Give your answer to 3 significant figures.

(5)

(c) Justify that the value of  $x$  found in part (b) gives a minimum value for  $S$ .

(2)

Using the value of  $x$  found in part (b), find to 2 decimal places,

(d) (i) the length of the edge  $AD$ ,

(ii) the length of the edge  $CD$ .

(4)

DO NOT WRITE IN THIS AREA

DO NOT WRITE IN THIS AREA

DO NOT WRITE IN THIS AREA



DO NOT WRITE IN THIS AREA

DO NOT WRITE IN THIS AREA

DO NOT WRITE IN THIS AREA

**Question 16 continued**

Handwritten response area consisting of 35 horizontal lines.

Leave blank







