

Surname	Centre Number	Candidate Number
First name(s)		0

**GCSE**

3100UJ0-1



S23-3100UJ0-1

FRIDAY, 16 JUNE 2023 – AFTERNOON**HISTORY****Unit 3: Thematic Study****3A. Changes in Crime and Punishment,
c.1500 to the Present Day**

1 hour 15 minutes

For Examiner's use only		
Question	Maximum Mark	Mark Awarded
1.	4	
2.	4	
3.	6	
4.	6	
5.	12	
6.	12	
7.	16	
SPaG	4	
Total	64	

INSTRUCTIONS TO CANDIDATES

Use black ink or black ball-point pen. Do not use gel pen or correction fluid.

Write your name, centre number and candidate number in the spaces at the top of this page.

Answer **all** questions.

Write your answers in the spaces provided in this booklet. If you run out of space, use the additional page(s) at the back of this booklet, taking care to number the question(s) correctly.

INFORMATION FOR CANDIDATES

The number of marks is given in brackets at the end of each question.

Question 7 will assess your ability to construct a balanced, reasoned and well-substantiated extended response.

In addition, your answer to question 7 will assess your ability to spell, punctuate and use grammar accurately and use a wide range of specialist language as appropriate.

The sources used in this examination paper may have been amended, adapted or abridged from the stated published work in order to make the wording more accessible.



JUN233100UJ0101

BLANK PAGE

**PLEASE DO NOT WRITE
ON THIS PAGE**



Answer **all** questions.

QUESTION 1

Complete the sentences below with an accurate term.

[4]

- (a) During the Tudor period, the local magistrate appointed to keep the peace and hear minor legal cases was known as the
- (b) In the eighteenth and nineteenth centuries, the punishment of sending criminals to Australia was known as
- (c) The Metropolitan Police was founded in 1829 in London by
- (d) Since the twentieth century, the early release of a prisoner because of good behaviour is called

3100UJ01
03

4



QUESTION 2

This question is about the nature of crimes.

Look at Sources A, B and C, which show changes in the nature of crime over time, and answer the question which follows.

Source A

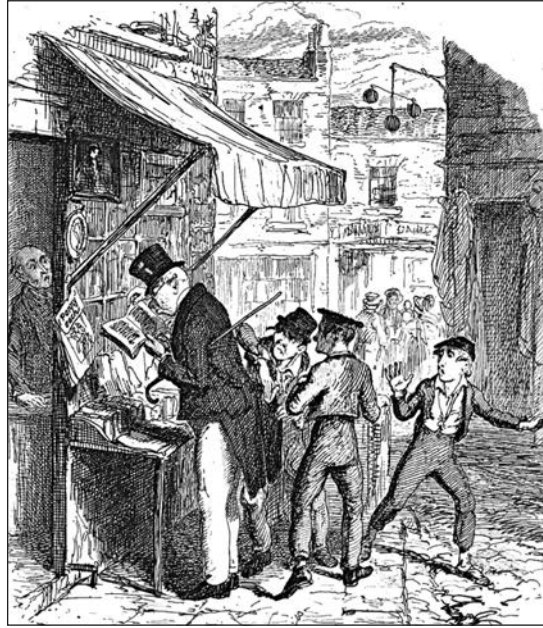
[An illustration showing a highway robbery in the early eighteenth century]

Source B

[A painting of smugglers in the late eighteenth century]



Source C



[An illustration showing a gang of child pickpockets in the nineteenth century]

Use Sources A, B and C to identify **one** similarity and **one** difference in the nature of crime over time. [4]

[Use at least two of the sources to answer the question.]

3100UJ01
05

2
2

Total



QUESTION 3

This question is about the causes of crime.

Describe the economic changes that led to an increase in crime in the sixteenth century. [6]

.....

.....

.....

.....

.....

.....

.....

.....

.....

.....

.....

.....

.....

.....

.....

.....

.....

.....

.....

.....

.....

.....

6



QUESTION 5

This question is about methods of punishment.

Explain why prison reformers like John Howard and Elizabeth Fry were important in improving prison conditions in the late eighteenth and early nineteenth centuries. [12]

Dotted lines for writing the answer.



Examiner
only

Large rectangular area with horizontal dotted lines for writing.

2

10

Total

--



Examiner only

QUESTION 6

This question is about methods of combating crime.

How significant were developments in transport and communication in changing methods of policing in the twentieth and twenty-first centuries? [12]

A series of horizontal dotted lines for writing the answer.



Examiner
only

Large rectangular area with horizontal dotted lines for writing.

2

10

Total

--



QUESTION 7

This question is about attitudes to punishment.

To what extent have attitudes to punishment changed over time?

[16]

In your answer you should:

- show how attitudes to punishment have changed over three historical eras
- discuss the variations in the extent of change over three historical eras
- include direct references to the history of Wales.

Marks for spelling, punctuation and the accurate use of grammar and specialist language are allocated to this question.

[4]



Examiner
only

A large rectangular area with a solid top border and a solid bottom border. Inside this area, there are 25 horizontal dotted lines spaced evenly, providing a guide for handwriting.



Examiner
only

Additional space for question 7 only:

6

10

Total

SPaG

4

END OF PAPER



