

Surname	Centre Number	Candidate Number
First name(s)		0

**GCSE**

3100UF0-1



Z22-3100UF0-1

MONDAY, 13 JUNE 2022 – MORNING**HISTORY****Unit 2: Study in Depth****History with a European / World Focus****2B. The USA: A Nation of Contrasts, 1910-1929**

1 hour

For Examiner's use only		
Question	Maximum Mark	Mark Awarded
1.	6	
2.	8	
3.	8	
4.	12	
5.	16	
SPaG	3	
Total	53	

INSTRUCTIONS TO CANDIDATES

Use black ink or black ball-point pen.
Do not use gel pen or correction fluid.

Write your name, centre number and candidate number in the spaces at the top of this page.

Answer **all** questions.

Write your answers in the spaces provided in this booklet. If you run out of space, use the additional page(s) at the back of this booklet, taking care to number the question(s) correctly.

INFORMATION FOR CANDIDATES

The number of marks is given in brackets at the end of each question.

Question 5 will assess your ability to construct a balanced, reasoned and well-substantiated extended response.

In addition, your answer to question 5 will assess your ability to spell, punctuate and use grammar accurately and use a wide range of specialist language as appropriate.



JUN223100UF0101

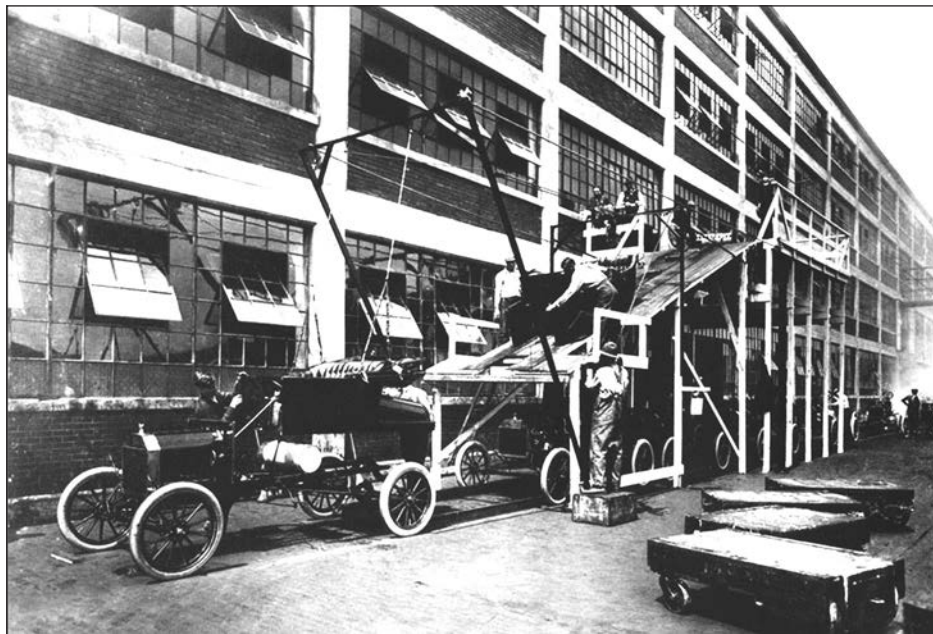
Answer **all** questions.

QUESTION 1

This question is about the economic boom.

Study the source below and then answer the question which follows.

Source A



[A photograph showing the production of cars at Ford's Detroit factory in 1913]

Use Source A and your own knowledge to describe the economic boom in America during this period. [6]

.....

.....

.....

.....

.....

.....

.....

.....





Examiner only

Large empty rectangular area for writing, bounded by a solid top and bottom line and dotted horizontal lines in between.

3100UF01
03

4

2

Total

--



03

Examiner
only

QUESTION 2

This question is about crime and corruption.

Describe how prohibition affected life in America during the 1920s.

[8]

8





BLANK PAGE

**PLEASE DO NOT WRITE
ON THIS PAGE**

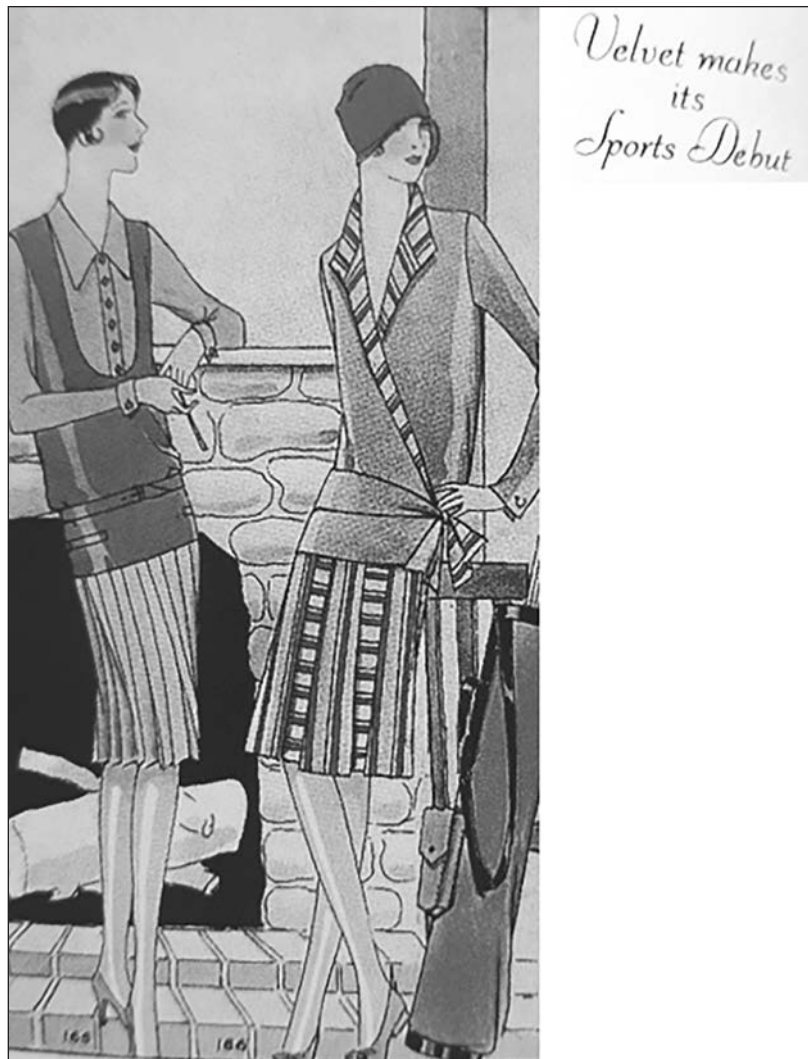
3100UF01
05



QUESTION 3

This question is about the role of women.

Study the source below and then answer the question which follows.

Source B

[A fashion page from *Women's Journal*, a popular magazine for young women in America's biggest cities, published in 1927]



Examiner
only

What was the purpose of Source B?

[8]

[Use details from Source B and your own knowledge and understanding of the historical context to answer the question.]

3100UF01
07

4
4

Total

--



QUESTION 4

This question is about the end of prosperity.

Study the sources below and then answer the question which follows.

Source C

If any man saves \$15 a week and invests in the stock market, at the end of 20 years he will have at least \$80 000 and \$400 a month. I am firm in my belief that anyone can be rich, and ought to be rich. All they need to do is to put their money into the stock market.

[John J Raskob, the Head of General Motors car company, speaking to his workers in 1928]

Source D

Stock prices virtually collapsed yesterday due to the panic selling of shares. Gigantic losses were seen in the most disastrous trading day in the stock market's history. Billions of dollars were wiped out. It wasted fortunes and ruined the lives of thousands of investors.

[From an article written by a financial journalist in the *New York Times*, a popular American newspaper, published on 30 October, 1929]

Which of the sources is more useful to an historian studying the reasons for the end of the economic boom in 1929? [12]

[You should refer to both sources in your answer and use your own knowledge and understanding of the historical context.]

.....

.....

.....

.....

.....

.....

.....

.....

.....

.....

.....



Examiner
only

Large rectangular area with horizontal dotted lines for writing.

6
6

Total

--



Examiner
only

QUESTION 5

This question is about religion and race.

Was the treatment of black Americans the worst form of religious and racial intolerance in the USA between 1910 and 1929? [16]

[Use your own knowledge and understanding of the issue to support your answer.]

Marks for spelling, punctuation and the accurate use of grammar and specialist language are allocated to this question. [3]

.....

.....

.....

.....

.....

.....

.....

.....

.....

.....

.....

.....

.....

.....

.....

.....

.....

.....

.....

.....

.....

.....

.....

.....



Examiner
only

A large rectangular area with a solid top and bottom border and a dotted line for a middle line, providing space for writing.



Examiner
only

Additional space for question 5 only:

4
12

Total

--

SPaG

3

END OF PAPER



BLANK PAGE

**PLEASE DO NOT WRITE
ON THIS PAGE**



BLANK PAGE

**PLEASE DO NOT WRITE
ON THIS PAGE**

