

Write your name here

Surname	Other names
---------	-------------

Centre Number

--	--	--	--	--	--

Candidate Number

--	--	--	--

Pearson Edexcel
Level 1/Level 2 GCSE (9–1)

Geography B

Paper 1: Global Geographical Issues

Tuesday 22 May 2018 – Afternoon Time: 1 hour 30 minutes	Paper Reference 1GB0/01
---	-----------------------------------

You must have: Calculator	Total Marks
-------------------------------------	-------------

Instructions

- Use **black** ink or ball-point pen.
- **Fill in the boxes** at the top of this page with your name, centre number and candidate number.
- Answer **all** questions.
- Answer the questions in the spaces provided
– *there may be more space than you need.*
- Where asked you must **show all your working out** with **your answer clearly identified** at the **end of your solution**.

Information

- The total mark for this paper is 94.
- The marks for **each** question are shown in brackets
– *use this as a guide as to how much time to spend on each question.*
- The marks available for spelling, punctuation, grammar and use of specialist terminology are clearly indicated.

Advice

- Read each question carefully before you start to answer it.
- Try to answer every question.
- Check your answers if you have time at the end.

Turn over ►

P52369A

©2018 Pearson Education Ltd.

1/1/1/1/1/1/1/1/1/1



Pearson

SECTION A

Hazardous Earth

Answer ALL questions in this section. Write your answers in the spaces provided.

Some questions must be answered with a cross in a box ☒. If you change your mind about an answer, put a line through the box ☒ and then mark your new answer with a cross ☒.

1 Study Figure 1.

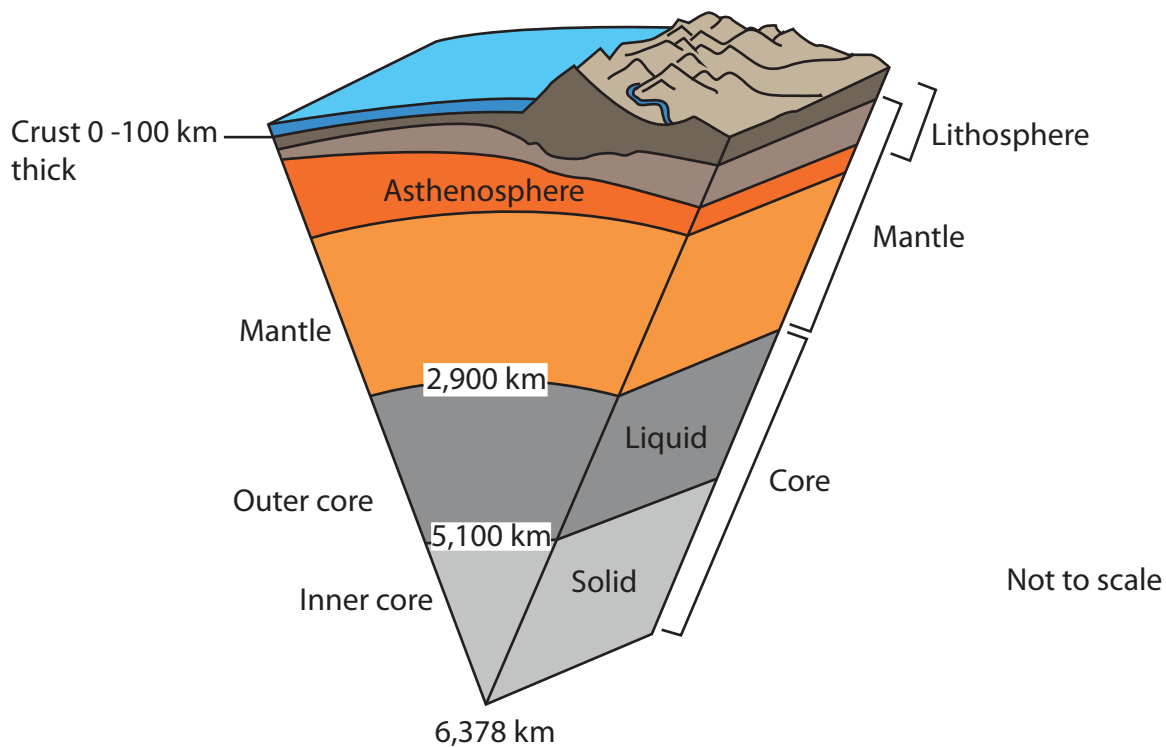


Figure 1

The Earth's layered structure

(a) (i) Identify which **one** of the following describes the outer core.

(1)

- A** a liquid layer of 2 200 km in thickness
- B** a solid layer with temperatures over 5000° Celsius
- C** a layer of partly molten and partly solid rock
- D** a solid layer of 1 300 km in thickness



(ii) State which **one** of the Earth's layers has the highest density.

(1)

- A mantle
- B crust
- C inner core
- D outer core

(b) (i) Explain **one** cause of a tsunami.

(2)

.....

.....

.....

.....

(ii) Identify **one** primary impact of tectonic hazards.

(1)

- A loss of employment
- B spread of disease
- C destruction of buildings
- D homelessness

DO NOT WRITE IN THIS AREA

DO NOT WRITE IN THIS AREA

DO NOT WRITE IN THIS AREA



(c) Analyse the data in Figure 2.

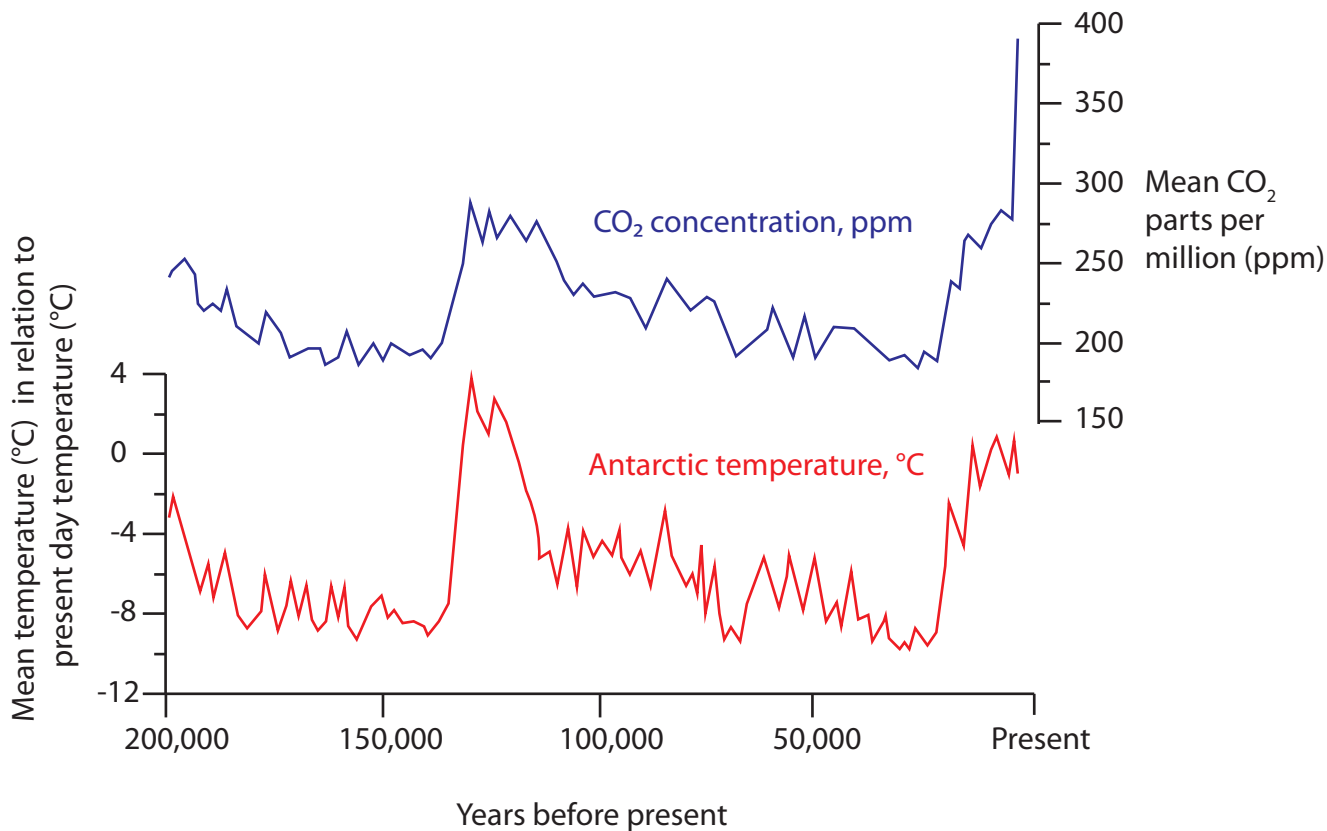


Figure 2

Mean Antarctic temperatures and atmospheric CO₂ concentration over the past 200,000 years

(i) Describe the trends in mean Antarctic temperatures and CO₂ concentration as shown in Figure 2. Use numeric data in your answer.

(3)

.....

.....

.....

.....

.....

.....



(ii) Explain **one** natural cause of climate change.

(2)

.....

.....

.....

.....

(d) The Saffir-Simpson Scale measures the magnitude of tropical cyclones.

Identify **one** source of data used to calculate the Saffir-Simpson Scale of a tropical cyclone.

(1)

- A** satellite imagery
- B** seismometer readings
- C** recorded wind speeds
- D** thermometer readings

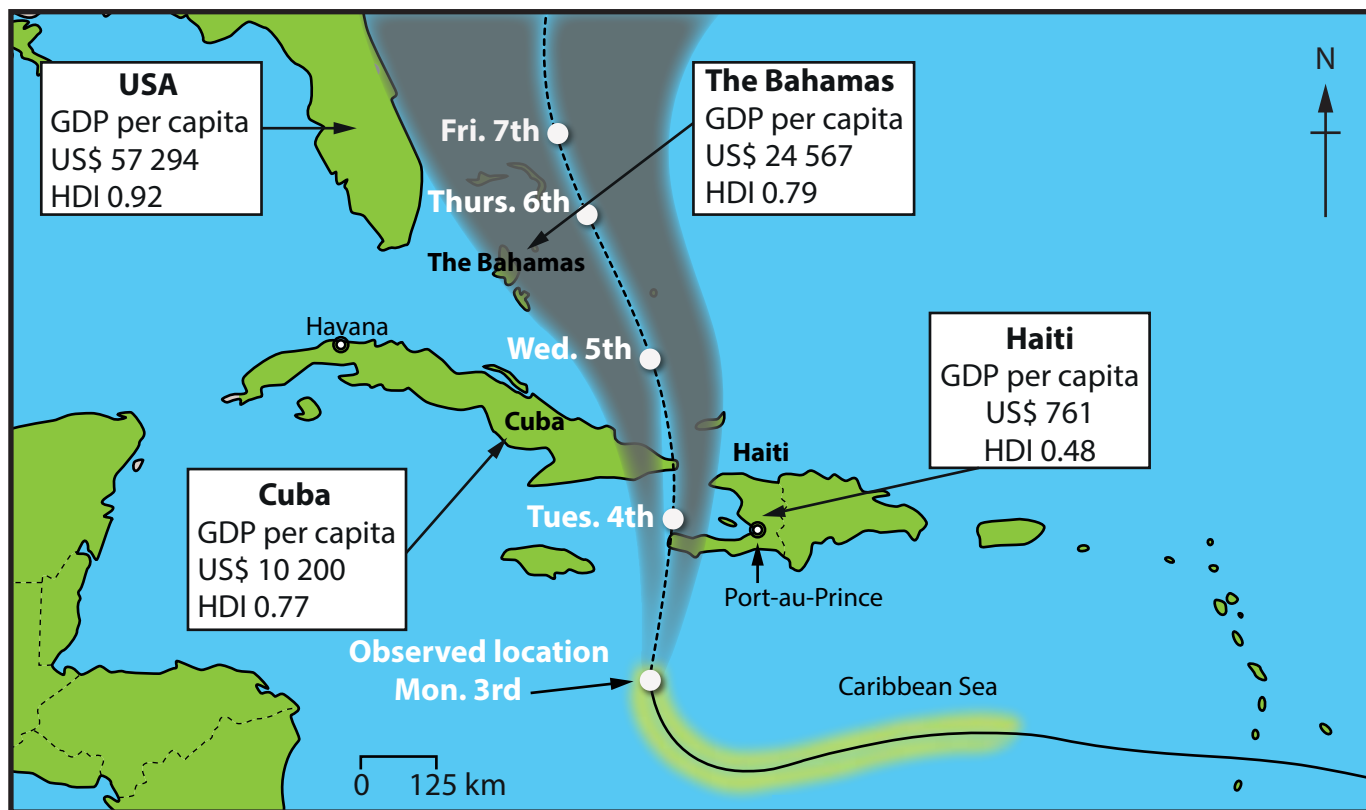
DO NOT WRITE IN THIS AREA

DO NOT WRITE IN THIS AREA

DO NOT WRITE IN THIS AREA



(e) Study Figure 3.



Key

- capital city
- actual path of the storm before 3rd October
- - - predicted path of the storm after 3rd October
- possible range of predicted storm paths
- area of hurricane force winds before the 3rd October

	USA	Haiti	The Bahamas
Total Deaths	33	1 027	27
GDP per Capita (US\$)	57 294	761	24 567
HDI (Human Development Index)	0.92	0.48	0.79

Figure 3

Actual and predicted path of Hurricane Matthew (Oct 2016) and data for selected countries



DO NOT WRITE IN THIS AREA

DO NOT WRITE IN THIS AREA

DO NOT WRITE IN THIS AREA

(i) Haiti appears to be very vulnerable to the impacts of Hurricane Matthew.

Using Figure 3, suggest **two** reasons why.

(4)

1
.....
.....

2
.....
.....

(ii) Figure 3 includes a GIS cyclone track map.

Explain **two** ways maps such as these can help countries to prepare for tropical cyclones.

(4)

1
.....
.....

2
.....
.....



DO NOT WRITE IN THIS AREA

DO NOT WRITE IN THIS AREA

DO NOT WRITE IN THIS AREA

(f) Explain **one** way in which global atmospheric circulation determines the location of high rainfall (low pressure) areas.

You may use a diagram to help your answer.

(3)

.....

.....

.....

.....

.....

.....



(g) Evaluate the effectiveness of the methods of response to a tropical cyclone in a named developed country.

(8)

Named developed country

DO NOT WRITE IN THIS AREA

DO NOT WRITE IN THIS AREA

DO NOT WRITE IN THIS AREA

Area with horizontal dotted lines for writing the answer.



DO NOT WRITE IN THIS AREA

DO NOT WRITE IN THIS AREA

DO NOT WRITE IN THIS AREA

.....

.....

.....

.....

.....

.....

(Total for Question 1 = 30 marks)

TOTAL FOR SECTION A = 30 MARKS



SECTION B

Development Dynamics

Answer ALL questions in this section. Write your answers in the spaces provided.

Some questions must be answered with a cross in a box ☒. If you change your mind about an answer, put a line through the box ☒ and then mark your new answer with a cross ☒.

Spelling, punctuation, grammar and use of specialist terminology will be assessed in 2(g).

2 (a) (i) Which of the following is the definition of 'Gross Domestic Product (GDP)'? (1)

- A the total value of goods and services produced within a country during one year
- B the total value of all products imported by a country during one year
- C the total value of all products exported by a country during one year
- D the total value of all exports minus the value of imports during one year

(ii) Which **one** of the following is included in the Human Development Index (HDI)? (1)

- A the average number of women dying in child birth
- B the average number of births per woman
- C the average number of years attending school
- D the average number of people of working age

(b) Explain how the HDI measures the health of a population. (2)

.....

.....

.....

.....



(c) Explain **one** way in which topography affects economic development.

(3)

(d) Analyse Figure 4.

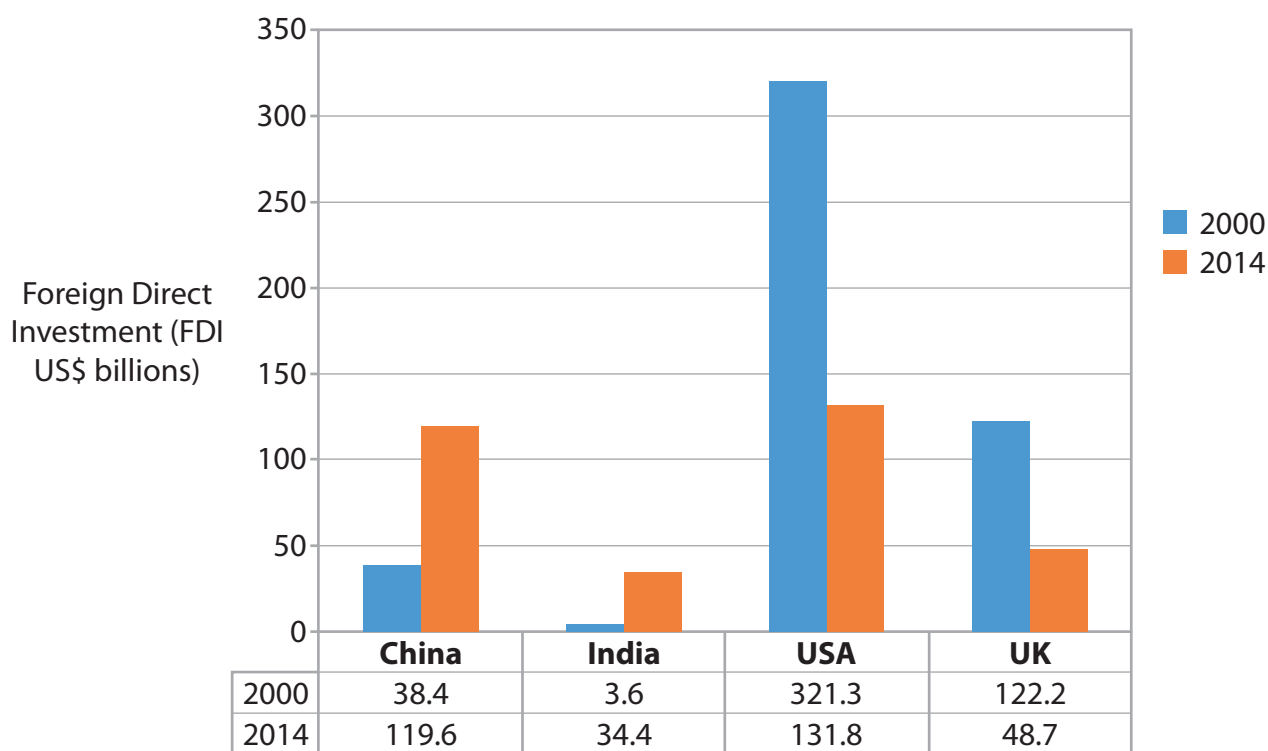


Figure 4

FDI received by selected countries between 2000 and 2014



DO NOT WRITE IN THIS AREA

DO NOT WRITE IN THIS AREA

DO NOT WRITE IN THIS AREA

(i) Calculate the difference between the FDI in China and India in 2014. (1)

..... US\$ billions

(ii) Calculate the percentage increase in FDI in China between 2000 and 2014. Answer to one decimal place. Show your working. (2)

.....%

(e) Explain **one** disadvantage of top-down development strategies. (3)

.....
.....
.....
.....
.....
.....
.....



(f) Analyse Figure 5.

	Rural population (millions)	Urban population (millions)	Total population (millions)
1960	550	100	650
1980	805	198	1,003
2000	820	455	1,275
2020 (projected)	650	750	1,400

Figure 5

Changes in the actual and projected rural and urban population of China between 1960 and 2020

(i) For 1960, calculate the ratio of rural population to urban population. (1)

.....

(ii) Describe another data presentation technique which could be used to show the changing rural and urban populations in China in the table (Figure 5). (2)

.....

(iii) Explain **one** negative impact of rapid economic development on human health. (2)

.....



(iv) For a named emerging country, explain **two** socio-economic differences between regions.

(4)

Named emerging country

1

.....

.....

.....

2

.....

.....

.....

DO NOT WRITE IN THIS AREA

DO NOT WRITE IN THIS AREA

DO NOT WRITE IN THIS AREA



P 5 2 3 6 9 A 0 1 5 2 8

In this question, up to four additional marks will be awarded for your spelling, punctuation, grammar and use of specialist terminology.

- (g) Evaluate the impact of globalisation on the economy of a named emerging country.

(8)

Named emerging country

.....

.....

.....

.....

.....

.....

.....

.....

.....

.....

.....

.....

.....

.....

.....

.....

.....

.....

.....

.....

.....

.....

.....

DO NOT WRITE IN THIS AREA

DO NOT WRITE IN THIS AREA

DO NOT WRITE IN THIS AREA



DO NOT WRITE IN THIS AREA

DO NOT WRITE IN THIS AREA

DO NOT WRITE IN THIS AREA

.....

.....

.....

.....

.....

.....

(Total for spelling, punctuation, grammar and use of specialist terminology = 4 marks)
(Total for Question 2 = 34 marks)

TOTAL FOR SECTION B = 34 MARKS



SECTION C

Challenges of an Urbanising World

Answer ALL questions in this section. Write your answers in the spaces provided.

Some questions must be answered with a cross in a box ☒. If you change your mind about an answer, put a line through the box ☒ and then mark your new answer with a cross ☒.

3 (a) State which of the following is the definition of urbanisation. (1)

- A an increasing number of people living in the suburbs of cities
- B an increasing proportion of people leaving the cities and moving to rural areas
- C an increasing number of people living in city centre locations
- D an increasing proportion of a country's population living in urban areas

(b) (i) State **one** characteristic of informal employment. (1)

.....

.....

(ii) Explain **one** reason why informal employment has grown rapidly in some cities. (2)

.....

.....

.....

.....

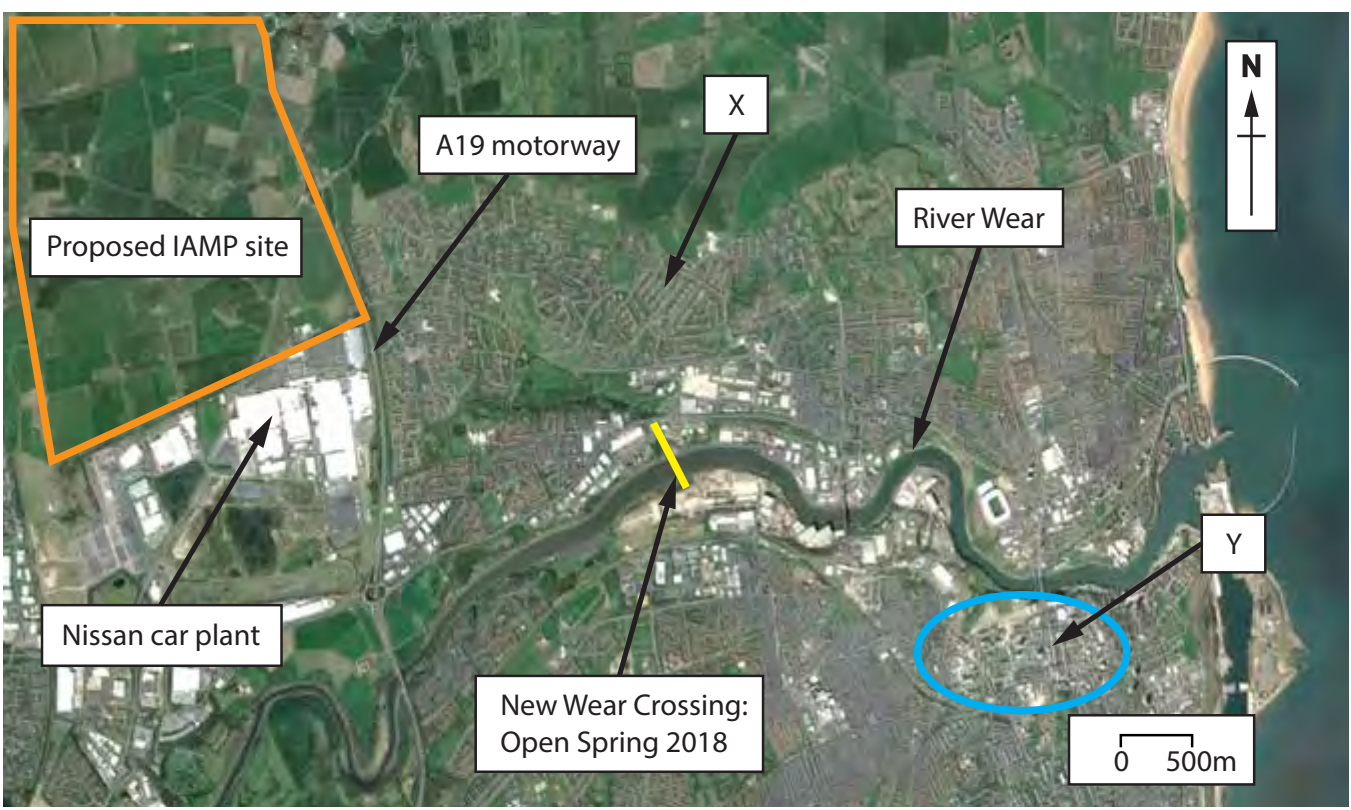
DO NOT WRITE IN THIS AREA

DO NOT WRITE IN THIS AREA

DO NOT WRITE IN THIS AREA



(c) Study Figure 6.



Key:

- IAMP - International Advanced Manufacturing Park
- Sunderland's Central Business District (CBD)

Figure 6

An annotated satellite image of Sunderland showing different land uses and future developments

(i) Identify the main land use found at locations X and Y by completing the table using the list below.

(2)

- A** Transport
- B** Agricultural
- C** Residential
- D** Commercial
- E** Industrial

Location	Main land use
X
Y

DO NOT WRITE IN THIS AREA

DO NOT WRITE IN THIS AREA

DO NOT WRITE IN THIS AREA



(ii) Describe the location of Sunderland's Central Business District (CBD) shown on Figure 6.

(3)

.....

.....

.....

.....

.....

.....

(iii) Suggest **two** factors which may have influenced the choice of site for the proposed International Advanced Manufacturing Park (IAMP) shown on Figure 6.

(4)

1

.....

.....

.....

.....

.....

2

.....

.....

.....

.....

DO NOT WRITE IN THIS AREA

DO NOT WRITE IN THIS AREA

DO NOT WRITE IN THIS AREA



DO NOT WRITE IN THIS AREA

DO NOT WRITE IN THIS AREA

DO NOT WRITE IN THIS AREA

BLANK PAGE



(d) Study Figure 7.

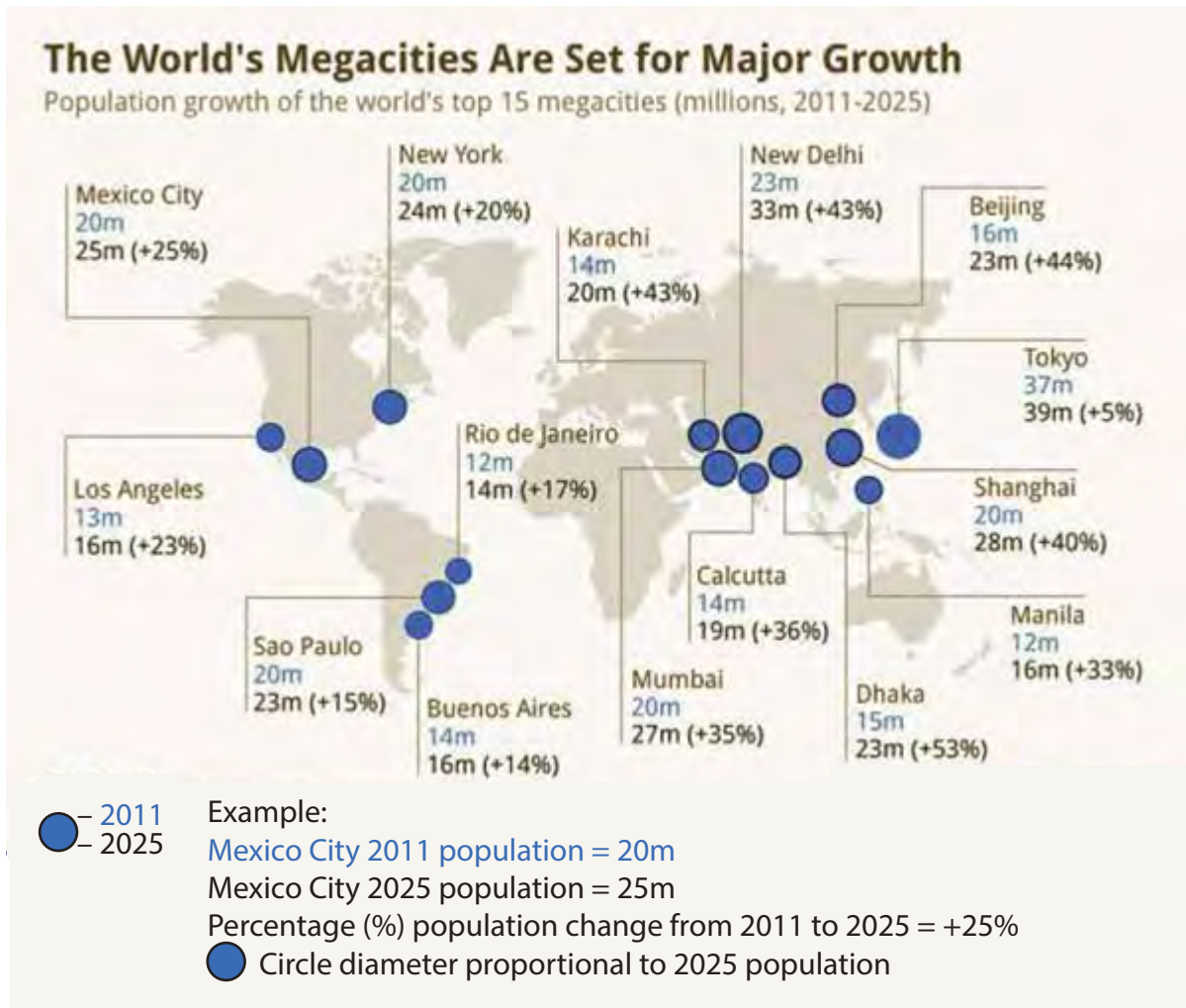


Figure 7

Populations and population growth rate of the world's largest megacities



DO NOT WRITE IN THIS AREA

DO NOT WRITE IN THIS AREA

DO NOT WRITE IN THIS AREA

- (i) Calculate the mean % population growth between 2011 and 2025 in South American megacities.
Answer to one decimal place.
Show your working.

(2)

.....%

- (ii) Explain why the rapid growth of megacities shown in Figure 7 may cause social challenges.

(3)

.....

.....

.....

.....

.....

.....



DO NOT WRITE IN THIS AREA

DO NOT WRITE IN THIS AREA

DO NOT WRITE IN THIS AREA

(e) (i) State **one** reason why the population of megacities is likely to grow rapidly. (1)

.....
.....

(ii) For a named megacity, explain why the quality of life varies between different residential areas. (3)

Named megacity

.....
.....
.....
.....
.....
.....
.....



(iii) For a named megacity, assess the different strategies used to improve sustainability.

(8)

Named megacity

DO NOT WRITE IN THIS AREA

DO NOT WRITE IN THIS AREA

DO NOT WRITE IN THIS AREA

Ruled area for student response.



DO NOT WRITE IN THIS AREA

DO NOT WRITE IN THIS AREA

DO NOT WRITE IN THIS AREA

.....

.....

.....

.....

.....

(Total for Question 3 = 30 marks)

TOTAL FOR SECTION C = 30 MARKS
TOTAL FOR PAPER = 94 MARKS



DO NOT WRITE IN THIS AREA

DO NOT WRITE IN THIS AREA

DO NOT WRITE IN THIS AREA

BLANK PAGE



BLANK PAGE

Pearson Education Ltd. gratefully acknowledges all following sources used in the preparation of this paper:

Figure 2 – Source from: <https://robertscribblers.com/tag/anthropogenic-climate-change/>

Figure 3 – Map data © 2017 Goggle, INEGI

Figure 6 – Map data © 2017 Google

Figure 7 – Source from: <https://www.statista.com/chart/1826/population-growth-in-the-worlds-megacities/>

Every effort has been made to contact copyright holders to obtain their permission for the use of copyright material. Pearson Education Ltd. will, if notified, be happy to rectify any errors or omissions and include any such rectifications in future editions.

