



UNIVERSITY OF CAMBRIDGE INTERNATIONAL EXAMINATIONS
International General Certificate of Secondary Education

GEOGRAPHY

0460/42

Paper 4 Alternative to Coursework

October/November 2012

INSERT

1 hour 30 minutes

READ THESE INSTRUCTIONS FIRST

This Insert contains Figs 1 and 2 and Tables 1 and 2 for Question 1 and Fig. 5 for Question 2.

The Insert is **not** required by the Examiner.

This document consists of **6** printed pages and **2** blank pages.



2

Fig. 1 for Question 1

Barometer reading

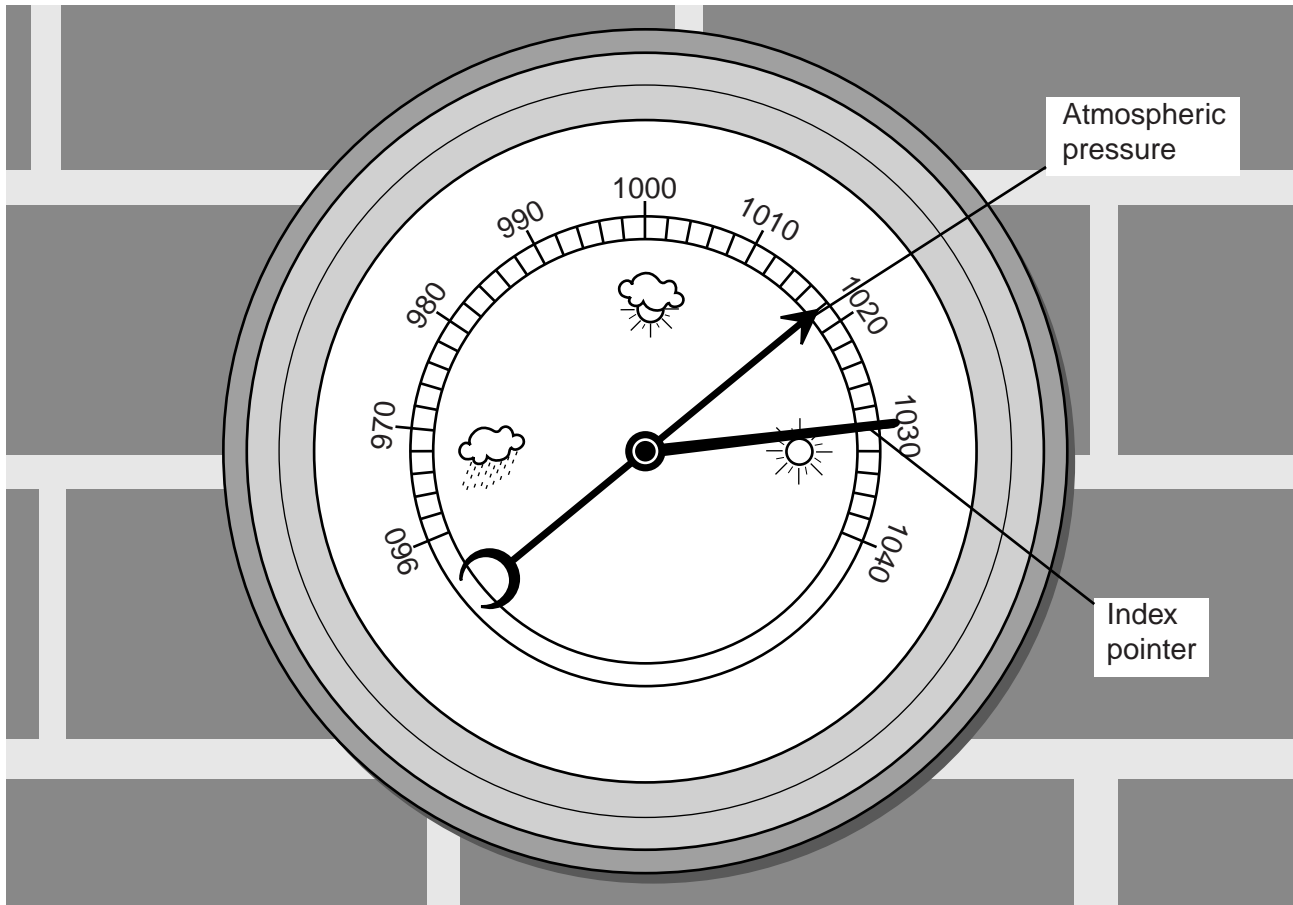


Fig. 2 for Question 1

Anemometer

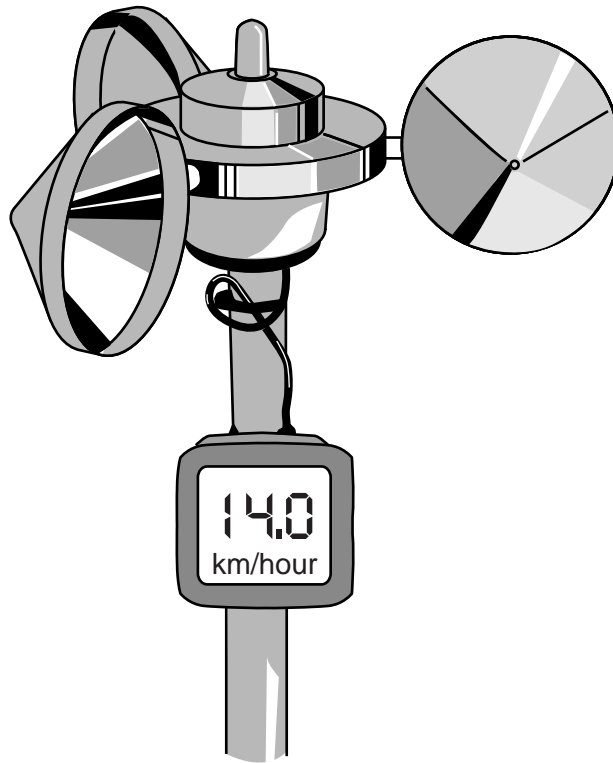


Table 1 for Question 1
Measurements at the two schools

Data for Manama, Bahrain

Date in January	11	12	13	14	15	16	17	18	19	20
Atmospheric pressure (mb)	1018	1019	1016	1019	1016	1020	1016	1016	1017	1019
Wind speed (km per hr)	4	4	12	13	11	9	5	3	7	10

Data for Jakarta, Indonesia

Date in January	11	12	13	14	15	16	17	18	19	20
Atmospheric pressure (mb)	1012	1013	1013	1013	1012	1012	1012	1011	1010	1010
Wind speed (km per hr)	4	7	4	5	8	5	7	8	6	7

Table 2 for Question 1

Atmospheric pressure

Data for Manama, Bahrain

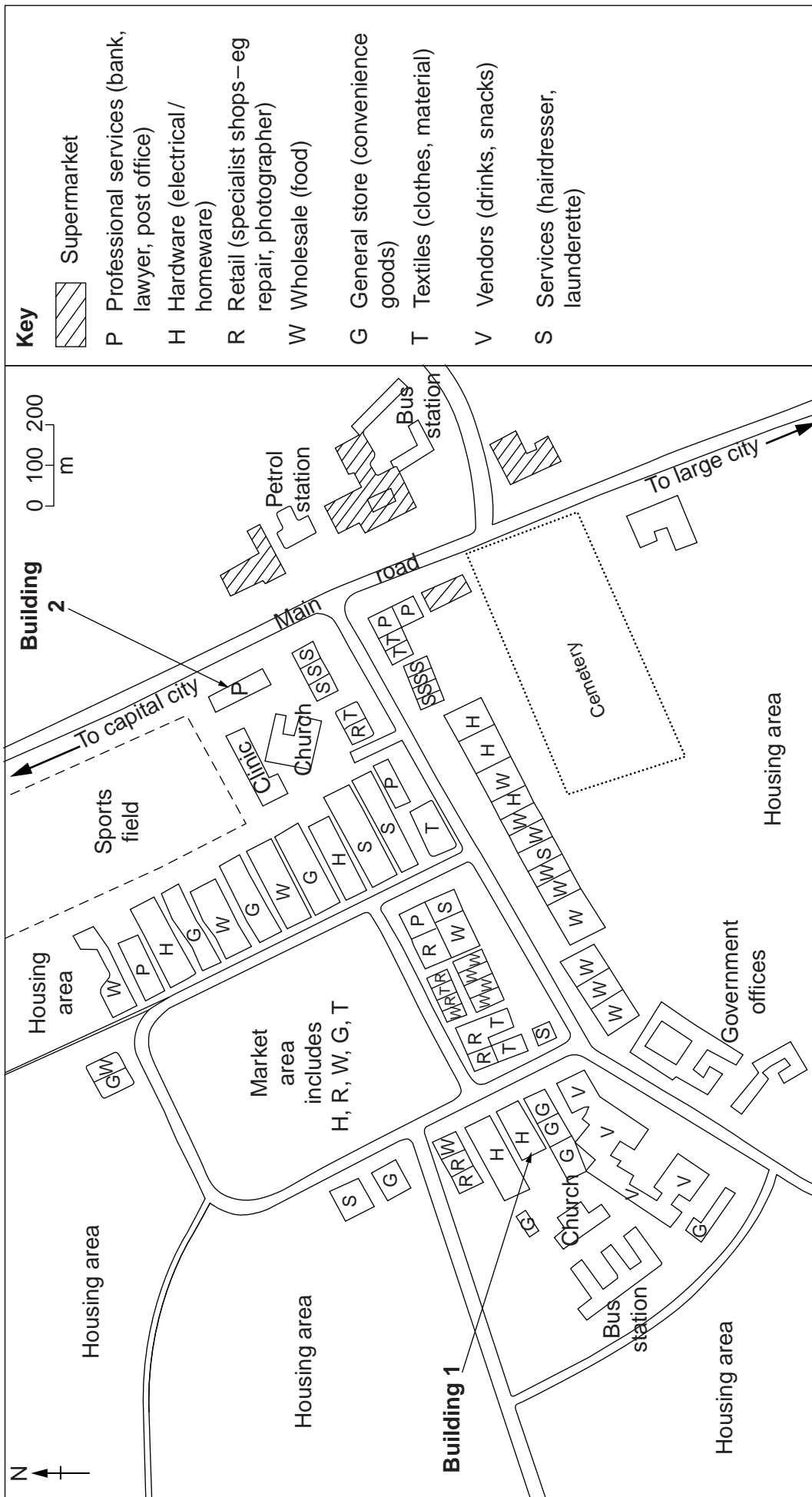
Date	11	12	13	14	15	16	17	18	19	20
Atmospheric pressure (mb) July	997	996	995	996	997	998	1000	999	998	998
Atmospheric pressure (mb) Jan	1018	1019	1016	1019	1016	1020	1016	1016	1017	1019

Data for Jakarta, Indonesia

Date	11	12	13	14	15	16	17	18	19	20
Atmospheric pressure (mb) July	1011	1012	1011	1011	1010	1010	1009	1009	1008	1009
Atmospheric pressure (mb) Jan	1012	1013	1013	1013	1012	1012	1012	1011	1010	1010

Fig. 5 for Question 2

Land use map of central area



BLANK PAGE

BLANK PAGE