

Survey Map

In order to preserve the scale, the map should be printed in colour onto A3 paper.

When printing, select 'Actual size'.

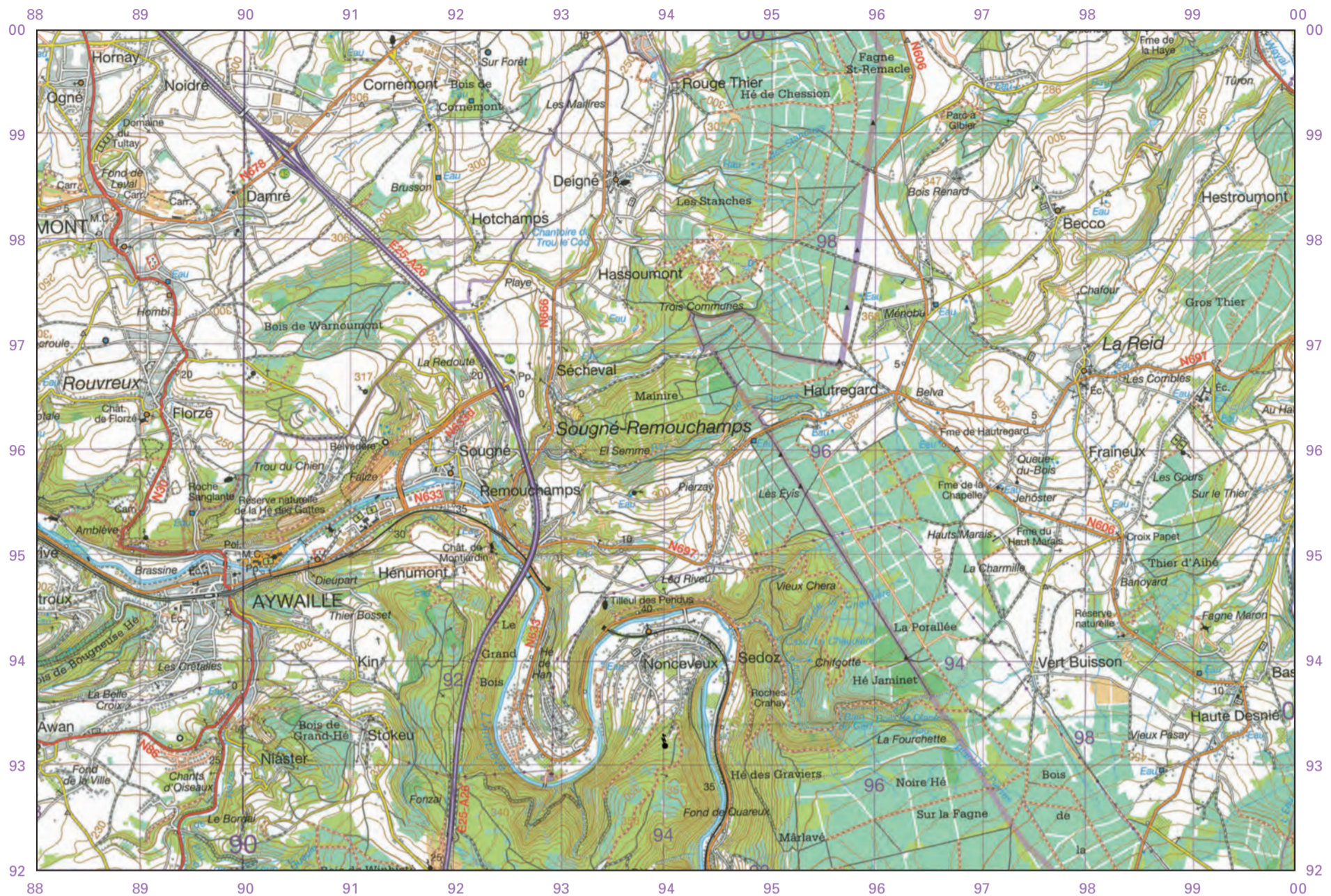
Do not select 'Fit' as this will re-size the map.

You may need to change the paper size to A3.

Ensure the orientation is Portrait.



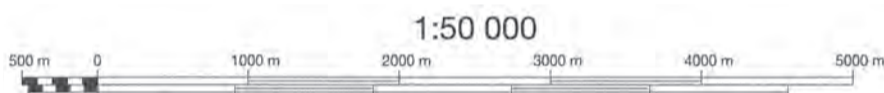
Four colours should appear above; if not then please return to invigilator.
Four colours should appear above; if not then please return to invigilator.



Elevations in metres – Contour interval: 10m

KEY

- | | | | |
|------------|-----------------------------|-------|-------------------------|
| Eau | Drinking water installation | Cl. | Clinic |
| Rau | Brook | Couv. | Convent |
| Ab. | Abbey | Déb. | Landing stage |
| Anc. | Former | Ec. | School |
| Bég. | Convent | Fme | Farm |
| Bne | Post | M.C. | Town hall |
| Calv. | Wayside cross | Min | Mill |
| Carr. | Quarry | Pol. | Integrated police force |
| Chap. | Chapel or shrine | Pp. | Fire station |
| Chât. | Castle | Sabl. | Sandpit |



- | | | | | | | | | | | | |
|--|--------------------|--|----------------------------|--|------------------|--|---|--|--------------------------------|--|--------------------------------------|
| | Motorways | | Main roads | | Secondary roads | | Linking roads | | Local roads | | Roads with traffic restriction |
| | Dual carriageways | | Roads with 4 or more lanes | | Roads >= 8m wide | | Roads >= 4m and < 8m wide (and/or 2 or 3 lanes) | | Road < 4m wide (and/or 1 lane) | | Parking: with/without petrol station |
| | Road number - Exit | | E40 | | N9 | | | | | | |

- Earth track
- Path: (a) stepped – (b) paved – (c) unpaved
- Railway: single track – multi-track – H.S.L.
- Railway: with tunnel
- (a) Sidings – (b) Station – (c) Halt
- Level crossings – NE: Not electrified
- Cable transport – Conveyor belt
- (a) Bridges – (b) Viaduct – (c) Tunnels

- Bridge
- Footbridge – Lock – Ship-lift – Wherry, ferry
- Visible pipeline
- Transformer station – High voltage line
- Built-up area: (a) high – (b) moderate density
- (c) Isolated building without function specified
(d) Isolated building with a specified function

- Sand, salt marsh
- Sports complex – Football pitch – Sports ground
- Rocks – Dunes – Spoil heap – Tumulus
- Military risk zone, restricted access
- Wall – Paved embankment – Row of trees
- Embankment, crest – Dyke or earth bank – Steep
- (a) Contour – (b) Intermediate contour – (c) Index contour

- a. River wider than 50m
b. River 25m to 50m wide
c. River 15m to 25m wide
d. River 3m to 15m wide
e. Stream
f. Intermittent stream
g. Lake/Pond
h. Swamp, marsh
i. Spring, resurgence, sink-hole, well
j. Breakwater, pile construction
l. Dam

- Industrial, agricultural, commercial building
- Silo, storage tank – Miscellaneous buildings
- Drinking water installation – building – Water tower
- Church – Church out of use – Chapel
- Religious building – Religious monument
- Monument – Castle – Tower – Cooling tower
- Windmill – Paddle wheel – Wind turbine
- Chimney stack – Outstanding tree – Telecommunication mast or tower
- Lighthouse – Signal light – Heliport
- Stone – Kilometre marker
- Cemetery – Ruin – Greenhouse
- Deciduous trees – Conifers – Mixed woodland
- Orchard/tree nursery, Park
- Heath/moor – Brush

- Contour interval is 10 metres
- Spot height – Height rounded to the metre
- Geodetic point: elevated – at ground level
- International boundary
- Regional boundary
- Provincial boundary
- District boundary
- Municipal boundary



NGI – reproduced with the authorization of the Belgian National Geographic Institute www.ngi.be
Any reproduction or adaptation in any form is forbidden

© National Geographic Institute – Brussels Ed.3 - 2015

Technical information on the development and the making of this map can be found on www.ign.be