

## **Survey Map**

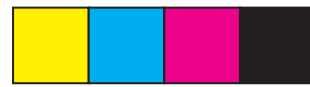
**In order to preserve the scale, the map should be printed in colour onto A3 paper.**

**When printing, select 'Actual size'.**

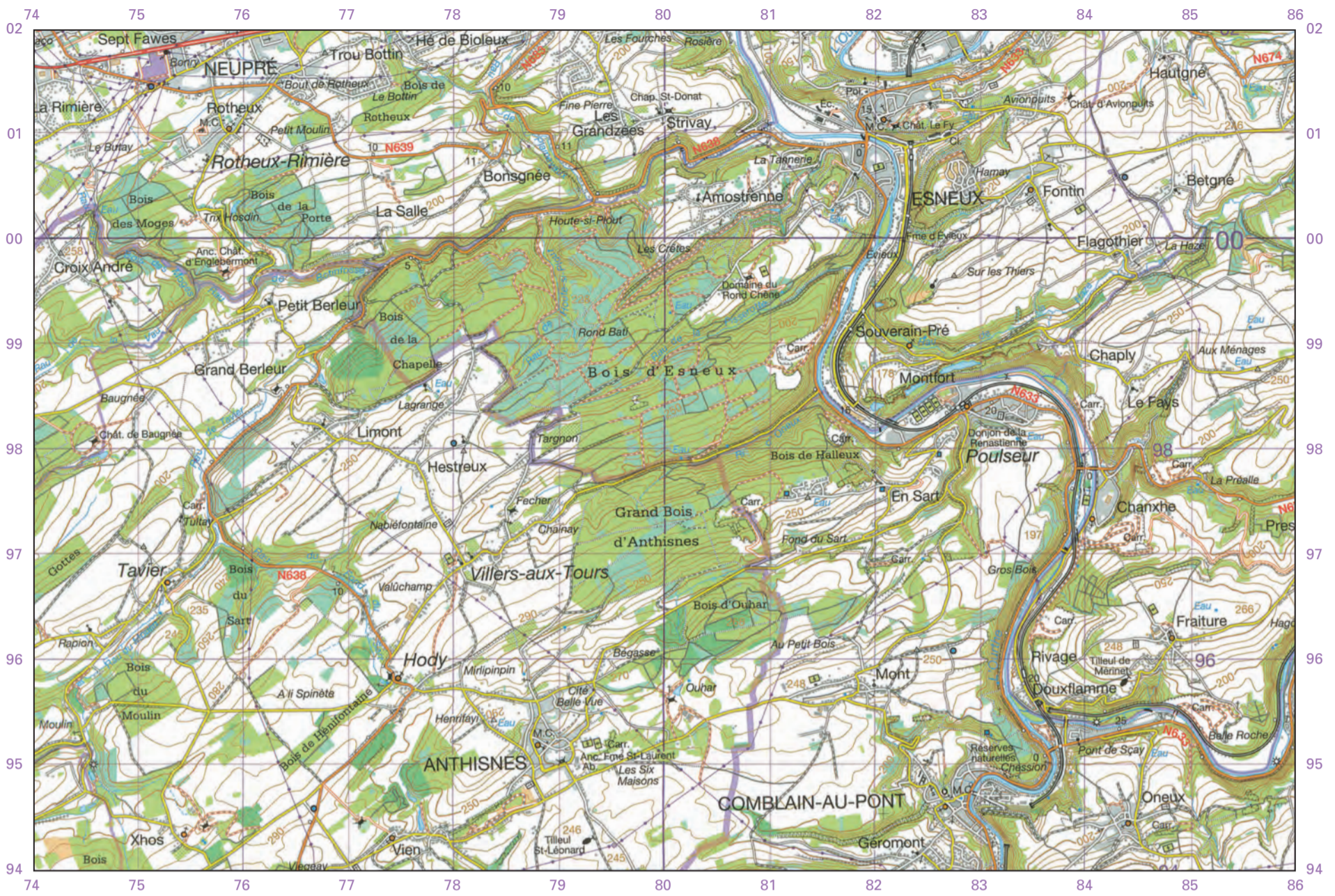
**Do not select 'Fit' as this will re-size the map.**

**You may need to change the paper size to A3.**

**Ensure the orientation is Portrait.**



Four colours should appear above; if not then please return to invigilator.  
Four colours should appear above; if not then please return to invigilator.



Elevations in metres – Contour interval: 10m

## KEY

- |            |                             |       |                         |
|------------|-----------------------------|-------|-------------------------|
| <b>Eau</b> | Drinking water installation | Cl.   | Clinic                  |
| <b>Rau</b> | Brook                       | Couv. | Convent                 |
| Ab.        | Abbey                       | Déb.  | Landing stage           |
| Anc.       | Former                      | Ec.   | School                  |
| Bég.       | Convent                     | Fme   | Farm                    |
| Bne        | Post                        | M.C.  | Town hall               |
| Calv.      | Wayside cross               | Min   | Mill                    |
| Carr.      | Quarry                      | Pol.  | Integrated police force |
| Chap.      | Chapel or shrine            | Pp.   | Fire station            |
| Chât.      | Castle                      | Sabl. | Sandpit                 |



- |  |                   |  |                            |  |                    |  |   |  |                                |  |                                      |
|--|-------------------|--|----------------------------|--|--------------------|--|---|--|--------------------------------|--|--------------------------------------|
|  | Motorways         |  | Main roads                 |  | Secondary roads    |  | Linking roads                                   |  | Local roads                    |  | Roads with traffic restriction       |
|  | Dual carriageways |  | Roads with 4 or more lanes |  | Roads >= 8m wide   |  | Roads >= 4m and < 8m wide (and/or 2 or 3 lanes) |  | Road < 4m wide (and/or 1 lane) |  | Parking: with/without petrol station |
|  | E40               |  | N9                         |  | Road number – Exit |  |   |  |                                |  |                                      |

- Earth track
- Path: (a) stepped – (b) paved – (c) unpaved
- Railway: single track – multi-track – H.S.L.
- Railway: with tunnel
- (a) Sidings – (b) Station – (c) Halt
- Level crossings – NE: Not electrified
- Cable transport – Conveyor belt
- (a) Bridges – (b) Viaduct – (c) Tunnels

- Bridge
- Footbridge – Lock – Ship-lift – Wherry, ferry
- Visible pipeline
- High voltage line
- Built-up area: (a) high – (b) moderate density
- (c) Isolated building without function specified  
(d) Isolated building with a specified function

- Sand, salt marsh
- Sports complex – Football pitch – Sports ground
- Rocks – Dunes – Spoil heap – Tumulus
- Military risk zone, restricted access
- Wall – Paved embankment – Row of trees
- Embankment, crest – Dyke or earth bank – Steep
- (a) Contour – (b) Intermediate contour – (c) Index contour
- Contour interval is 10 metres
- 11.3 78 Spot height – Height rounded to the metre
- Geodetic point: elevated – at ground level

- a. River wider than 50m  
b. River 25m to 50m wide  
c. River 15m to 25m wide  
d. River 3m to 15m wide
- e. Stream
- f. Intermittent stream
- g. Lake/Pond
- h. Swamp, marsh
- i. Spring, resurgence, sink-hole, well
- j. Breakwater, pile construction
- l. Dam

- Industrial, agricultural, commercial building
- Silo, storage tank – Miscellaneous buildings
- Drinking water installation – building – Water tower
- Church – Church out of use – Chapel
- Religious building – Religious monument
- Monument – Castle – Tower – Cooling tower
- Windmill – Paddle wheel – Wind turbine
- Chimney stack – Outstanding tree – Telecommunication mast or tower
- Lighthouse – Signal light – Heliport
- Stone – Kilometre marker
- Cemetery – Ruin – Greenhouse
- Deciduous trees – Conifers – Mixed woodland
- Orchard/tree nursery, Park
- Heath/moor – Brush

- International boundary
- Regional boundary
- Provincial boundary
- District boundary
- Municipal boundary



NGI – reproduced with the authorization of the Belgian National Geographic Institute www.ngi.be  
Any reproduction or adaptation in any form is forbidden

© National Geographic Institute – Brussels Ed.3 - 2015

Technical information on the development and the making of this map can be found on [www.ign.be](http://www.ign.be)