



# Cambridge IGCSE™

CANDIDATE  
NAME

CENTRE  
NUMBER

--	--	--	--	--

CANDIDATE  
NUMBER

--	--	--	--



**GEOGRAPHY**

**0460/13**

Paper 1 Geographical Themes

**October/November 2023**

**1 hour 45 minutes**

You must answer on the question paper.

You will need: Insert (enclosed)  
Calculator  
Protractor

Ruler

## INSTRUCTIONS

- Answer **three** questions in total, **one** from each section.
- Use a black or dark blue pen. You may use an HB pencil for any diagrams or graphs.
- Write your name, centre number and candidate number in the boxes at the top of the page.
- Write your answer to each question in the space provided.
- Do **not** use an erasable pen or correction fluid.
- Do **not** write on any bar codes.
- If additional space is needed, you should use the lined pages at the end of this booklet; the question number or numbers must be clearly shown.

## INFORMATION

- The total mark for this paper is 75.
- The number of marks for each question or part question is shown in brackets [ ].
- The insert contains additional resources referred to in the questions.

## Definitions

MEDCs – More Economically Developed Countries

LEDCs – Less Economically Developed Countries

This document has **32** pages. Any blank pages are indicated.

Section A

Answer **one** question from this section.

- 1 (a) Study Fig. 1.1, a graph showing information about population change in New Zealand between 1964 and 2019 (New Zealand is an MEDC in Australasia).

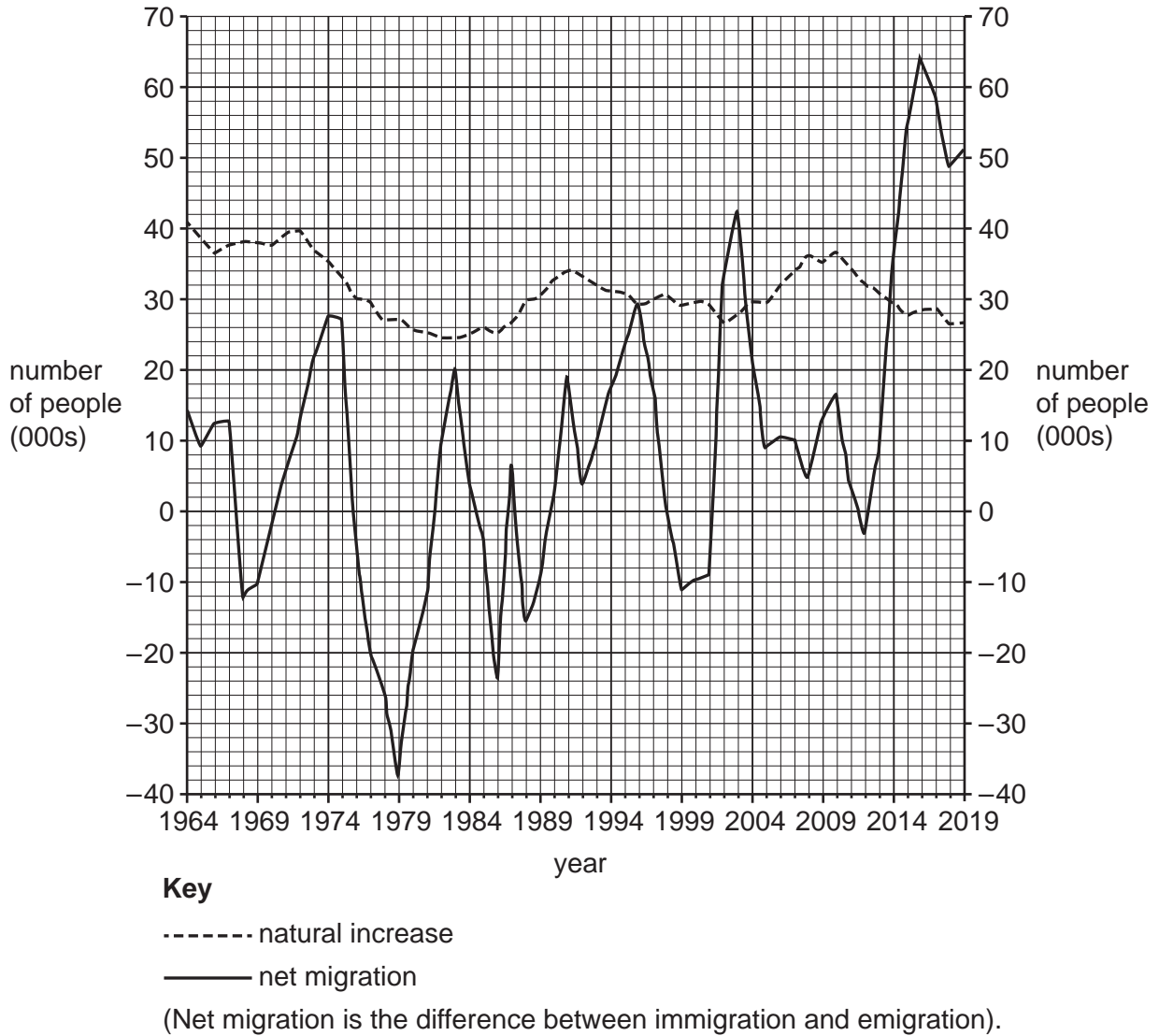


Fig. 1.1

- (i) Which year had the highest net migration?

.....

[1]

(ii) Which of the following statements are correct about population change in New Zealand between 1964 and 2019?

Tick **two** answers in the following table:

	tick (✓)
Net migration and natural increases were directly proportional.	
Net migration fluctuated more than natural increases.	
Net migration increased overall but there was a decline in natural increases.	
Net migration increased continuously.	
Net migration was lower than natural increases throughout the period.	

[2]

(iii) Using Fig. 1.1, compare the overall population change in **1999** with the overall population change in **2019**. Use statistics to support your answer.

.....

.....

.....

.....

.....

.....

.....

..... [3]

(iv) Suggest reasons for the low rate of **natural** population increases in New Zealand.

.....

.....

.....

.....

.....

.....

.....

..... [4]

(b) Study Fig. 1.2, showing information about migrants from islands in the Pacific Ocean to New Zealand.

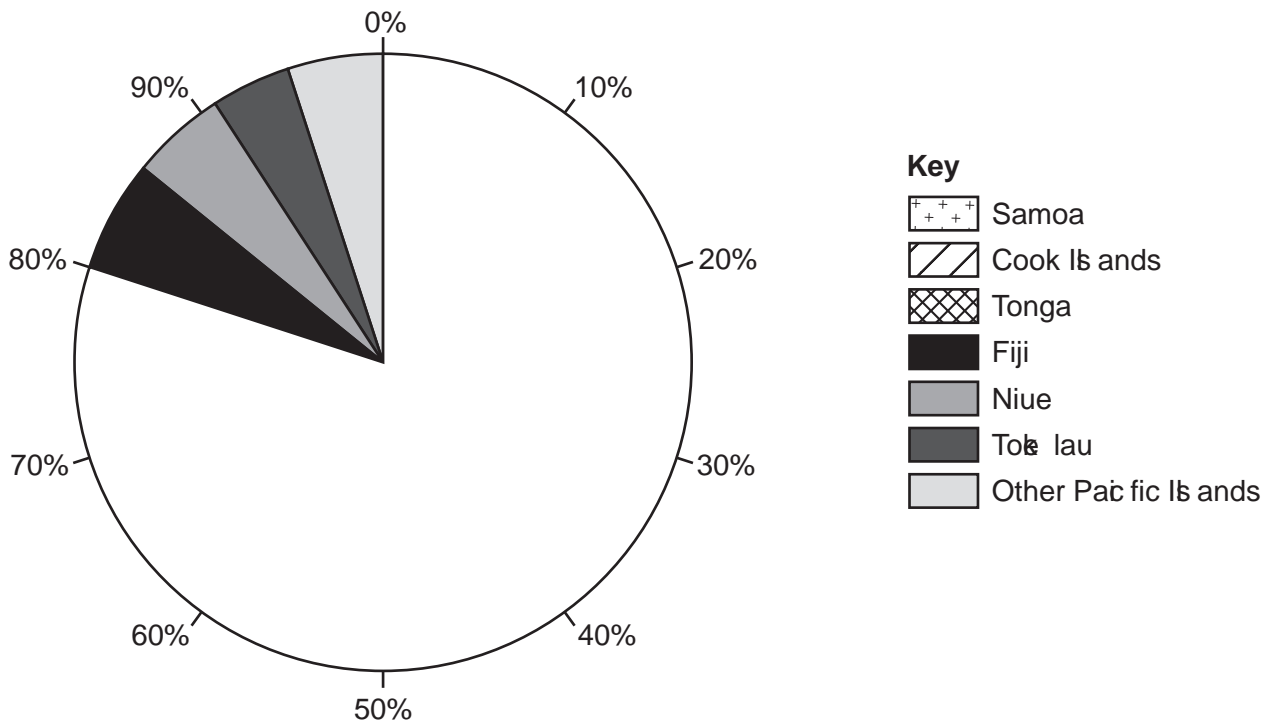


Fig. 1.2

(i) Complete Fig. 1.2 by plotting the following information about the origin of migrants from islands in the Pacific Ocean to New Zealand.

Samoa = 43%  
Cook Islands = 23%  
Tonga = 14%

[3]

(ii) One they have arrived in New Zealand many of the migrants from the islands in the Pacific Ocean live in and around the city of Auckland. Suggest the advantages and disadvantages of this migration for Auckland.

advantages .....

.....

.....

.....

.....

.....

disadvantages .....

.....

.....

.....

.....

.....

[5]




2 (a) Study Fig. 2.1 (Insert), a graph showing the results of a survey about the quality of life in four urban areas in a country in Eastern Europe.

(i) What percentage of the people surveyed in area C were unhappy about education?

..... % [1]

(ii) Put the four urban areas in rank order of the percentage of people who were unhappy about housing.

first	.....	most unhappy		
second	.....			
third	.....			
fourth	.....		least unhappy	[2]

(iii) Describe three differences between the results of the survey in area A and area B. Do not use statistics in your answer.

1 .....

.....

2 .....

.....

3 .....

..... [3]

(iv) Suggest why some people in the urban areas shown may be unhappy about transportation.

.....

.....

.....

.....

.....

.....

.....

.....

.....

..... [4]

**(b)** Study Fig. 2.2 (Insert), a photograph showing housing in a city in Eastern Europe.

**(i)** Describe **three** likely problems of living in the housing shown in Fig. 2.2.

- 1 .....
- .....
- 2 .....
- .....
- 3 .....
- ..... [3]

**(ii)** In many urban areas there are inequalities. Suggest reasons for the inequalities which exist between the people living in urban areas

- .....
- .....
- .....
- .....
- .....
- .....
- .....
- .....
- .....
- .....
- .....
- .....
- .....
- ..... [5]





## Section B

Answer **one** question from this section.

- 3 (a) Study Fig. 3.1, a sketch showing a coastal area which has been shaped by erosion.

Content removed due to copyright restrictions.

Fig. 3.1

- (i) Name the coastal landform labelled X in Fig. 3.1.

**Circle one** answer from the following:

delta                  sand dune                  spit                  wave cut platform.                  [1]

- (ii) Identify the features labelled Y and Z in Fig. 3.1.

Y .....

Z ..... [2]

(iii) The area shown in Fig. 3.1 is affected by desertification. Describe **three** differences between desertification and other types of desertification.

- 1 .....
- 2 .....
- 3 ..... [3]

(iv) Describe the problems which may be caused by coastal erosion for people living on or near the coast.

- .....
- .....
- .....
- .....
- .....
- .....
- .....
- .....
- .....
- ..... [4]

(b) Study Fig. 3.2 (Insert), a photograph showing part of a headland.

(i) Describe the features of the headland shown in Fig. 3.2.

.....  
.....  
.....  
.....  
.....  
..... [3]

(ii) Suggest how natural processes have formed the area labelled C in Fig. 3.2.

.....  
.....  
.....  
.....  
.....  
.....  
.....  
.....  
.....  
.....  
..... [5]



**BLANK PAGE**

4 (a) Study Fig. 4.1, showing two types of plate boundary.

**constructive (divergent) boundary**

Content removed due to copyright restrictions.

**destructive (convergent) boundary**

Content removed due to copyright restrictions.

**Fig. 4.1**

(i) Compare the direction of plate movement at the constructive (divergent) and destructive (convergent) plate boundaries

.....  
..... [1]

(ii) Choose the correct label to be placed at each of X and Y in Fig. 4.1.

Choose your answers from the following list:

- convection currents
- earth's core
- epicentre
- lava erupting from the volcano
- subduction.

X .....

Y ..... [2]

(iii) Describe the main characteristics of shield volcanoes which form at constructive (divergent) plate boundaries

.....

.....

.....

.....

.....

.....

..... [3]

(iv) Explain why volcanoes are formed at destructive (convergent) plate boundaries

.....

.....

.....

.....

.....

.....

.....

.....

.....

..... [4]

- (b) Study Fig. 4.2, a scatter graph showing the relationship between the length of volcanic eruptions and the time between them.

Content removed due to copyright restrictions.

Fig. 4.2

- (i) To what extent does Fig. 4.2 show that there is a relationship between the length of volcanic eruptions and the time between them?

.....

.....

.....

.....

.....

.....

..... [3]







**BLANK PAGE**

## Section C

Answer **one** question from this section.

- 5 (a) Study Fig. 5.1, a map showing the island of Zakynthos, Greece (an MEDC in Europe), along with Figs 5.2, 5.3 and 5.4 (Insert), photographs taken in part of Zakynthos where the tourist industry is important.



## Key

-  airport
-  main town
-  tourist resort
-  main road
-  minor road

Fig. 5.1

- (i) Which **one** of the following statements is correct about the distribution of tourist resorts in Zakynthos?

Tick (✓) your answer in the table:

	tick (✓)
They are evenly distributed around the coast.	
They are in all parts of the island.	
They are inland in the north and west.	
They are on the coast, mainly in the east and south.	

[1]

- (ii) What is the distance and direction **from** the airport **to** Alykes?

distance ..... km

direction .....

[2]

- (iii) Using Figs 5.2, 5.3 and 5.4 (Insert), identify **three** different ways in which Zakynthos benefits **economically** from tourism.

1 .....

.....

2 .....

.....

3 .....

..... [3]

- (iv) Suggest how the **infrastructure** of Zakynthos has been developed as a result of tourism.

.....

.....

.....

.....

.....

.....

.....

..... [4]

(b) Study Fig. 5.5, a graph showing information about the climate of Zakynthos.

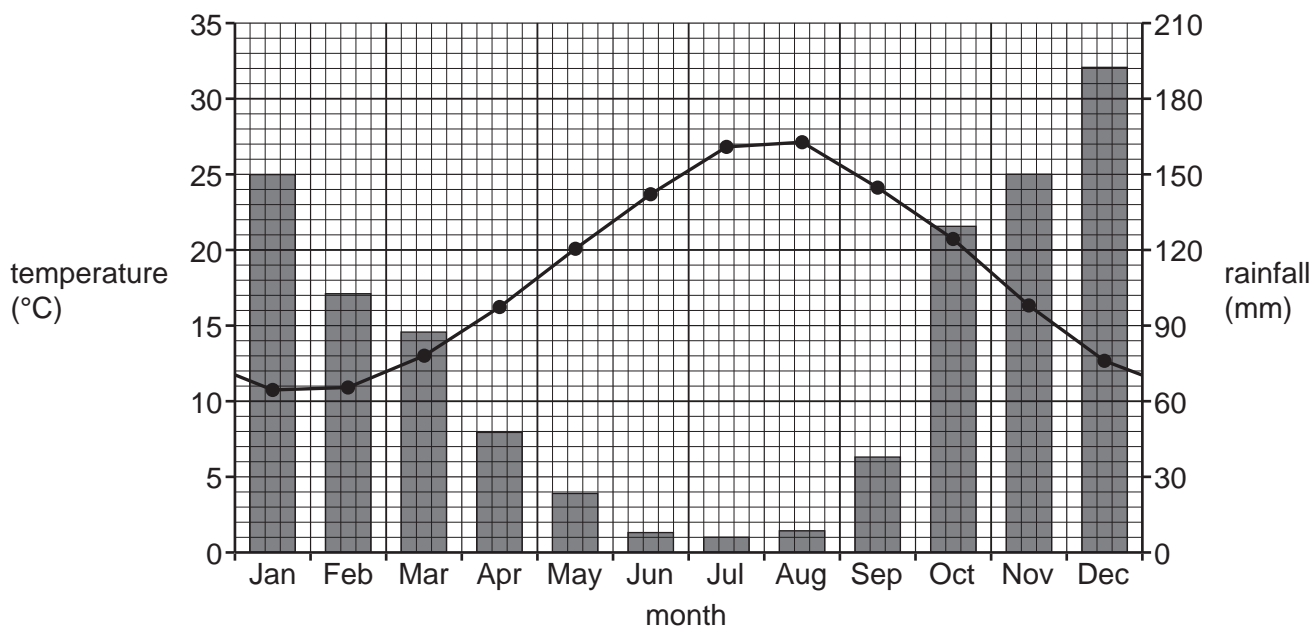


Fig. 5.5

(i) Suggest reasons why the main tourist season in Zakynthos is from May to September. Use statistics to support your answer.

.....

.....

.....

.....

.....

.....

.....

.....

[3]







6 (a) Study Fig. 6.1 (Insert), a map showing the percentage of electricity generated from renewable sources in 2020.

(i) What is meant by *renewable* sources of energy?

.....  
..... [1]

(ii) Which of the following countries generate more than 60% of their electricity using renewable sources?

**Circle two** answers from the following list:

- Angola          Australia          Bolivia          Mex co          Peru.          [2]

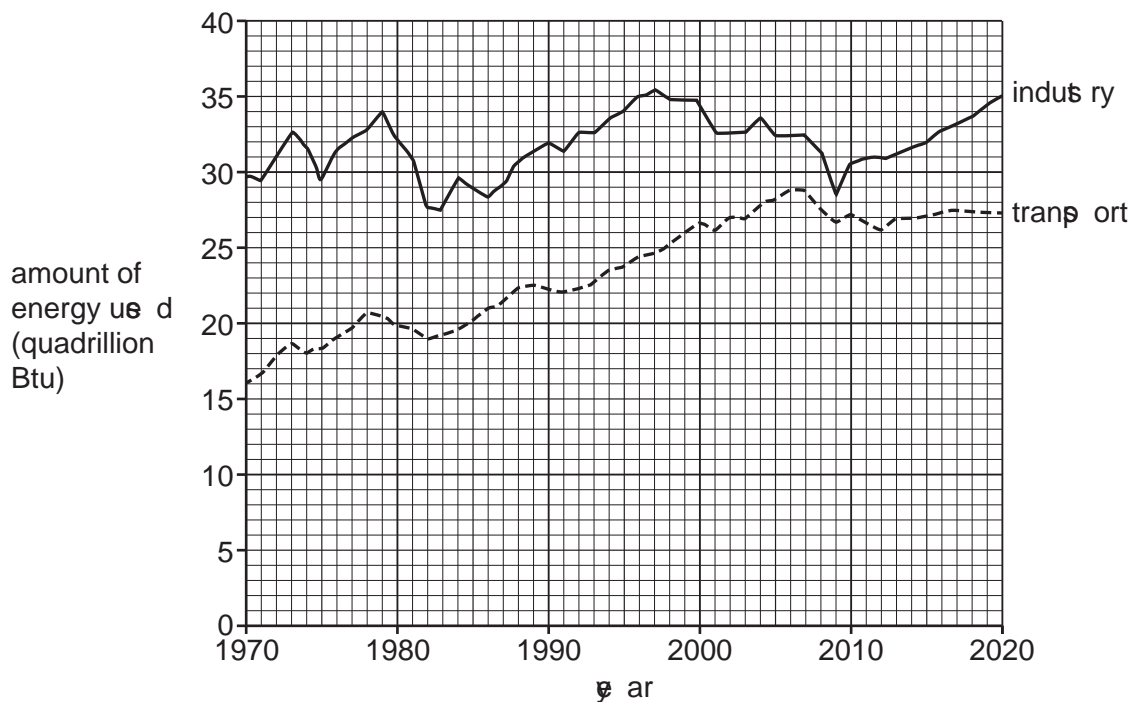
(iii) Suggest reasons why some countries generate a greater percentage of electricity using renewable sources than other countries.

.....  
.....  
.....  
.....  
.....  
.....  
..... [3]

(iv) China and the USA use large amounts of fossil fuels. Describe the threats to the natural environment of using fossil fuels.

.....  
.....  
.....  
.....  
.....  
.....  
.....  
.....  
.....  
..... [4]

(b) Study Fig. 6.2, a graph showing information about the amount of energy used for industry and transport in the USA between 1970 and 2020.



(Btu = British thermal unit. It is a way of measuring the amount of energy used.)

Fig. 6.2

(i) Compare the amount of energy used in industry and transport between 1970 and 2020. Do not use statistics in your answer.

.....

.....

.....

.....

.....

..... [3]

(ii) Energy is one of the inputs of an industrial system.  
Explain what is meant by an industrial system.

.....

.....

.....

.....

.....

.....

.....

.....

.....

.....

..... [5]



**Additional page**

If you use the following page to complete the answer to any question, the question number must be clearly shown.

.....

.....

.....

.....

.....

.....

.....

.....

.....

.....

.....

.....

.....

.....

.....

.....

.....

.....

.....

.....

.....

.....

.....

.....

.....

.....

.....



**BLANK PAGE**

## BLANK PAGE

---

The boundaries and names shown, the designations used and the presentation of material on any maps contained in this question paper/inset do not imply official endorsement or acceptance by Cambridge Assessment International Education concerning the legal status of any country, territory, or area or any of its authorities or of the delimitation of its frontiers or boundaries.

Permission to reproduce items where third-party owned material protected by copyright is included has been sought and cleared where possible. Every reasonable effort has been made by the publisher (UCLES) to trace copyright holders but if any items requiring clearance have unwittingly been included, the publisher will be pleased to make amends at the earliest possible opportunity.

To avoid the issue of disclosure of answer-related information to candidates all copyright acknowledgements are reproduced online in the Cambridge Assessment International Education Copyright Acknowledgements Booklet. This is produced for each series of examinations and is freely available to download at [www.cambridgeinternational.org](http://www.cambridgeinternational.org) after the live examination series.

Cambridge Assessment International Education is part of Cambridge Assessment. Cambridge Assessment is the brand name of the University of Cambridge Local Examinations Syndicate (UCLES), which is a department of the University of Cambridge.