



Cambridge IGCSE™ (9–1)

GEOGRAPHY**0976/12**

Paper 1 Geographical Themes

May/June 2023

INSERT

1 hour 45 minutes

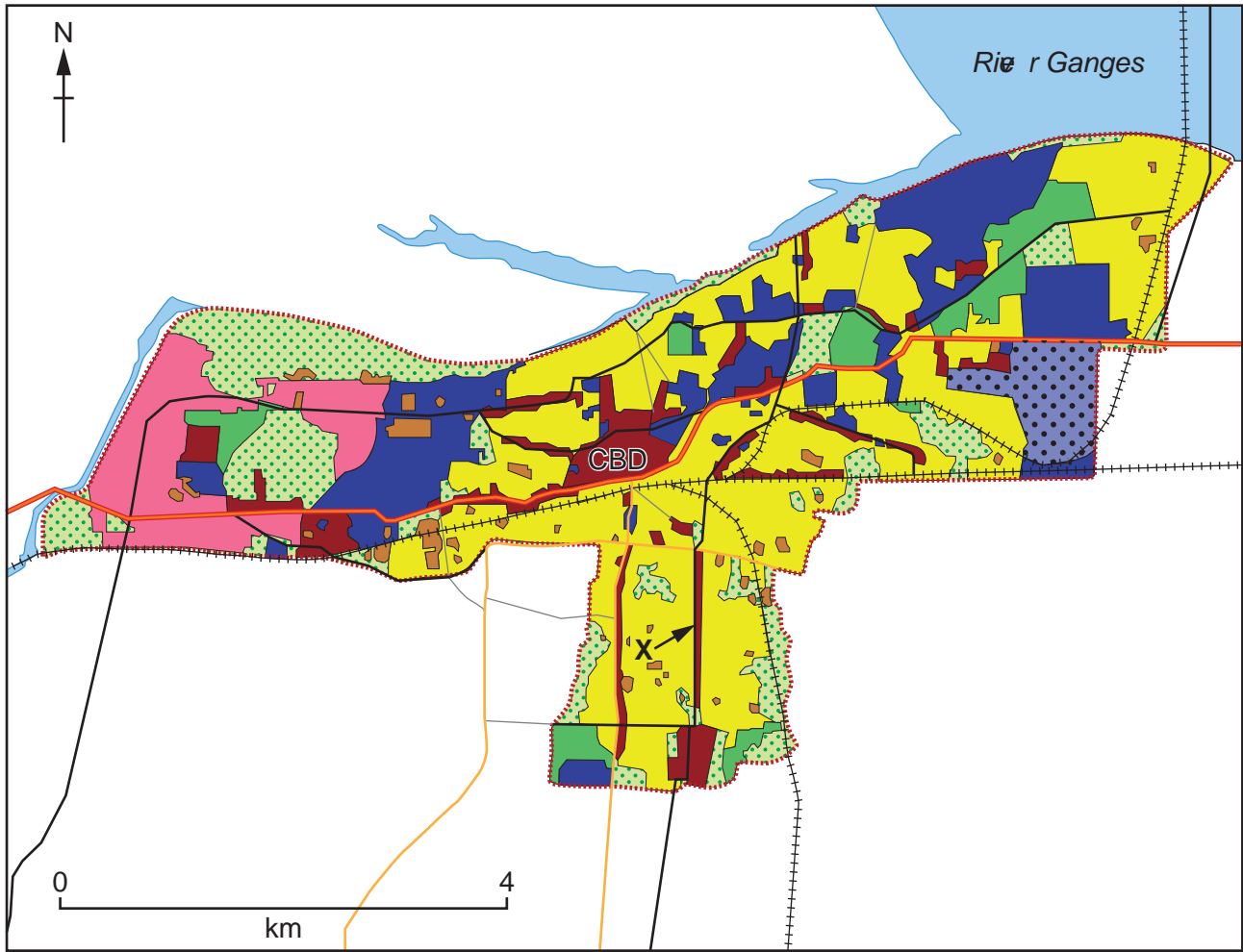
INFORMATION

- This insert contains additional resources referred to in the questions
- You may annotate this insert and use the blank pages for planning. **Do not write your answers** on the insert.



This document has **8** pages

Fig. 2.1 for Question 2



Key

- | | |
|--|------------------|
| residential | river |
| shops and services | others |
| public buildings | national highway |
| industry | state highway |
| open/arable | major road |
| parks/green spaces
/forest/plantation | other road |
| airport | railway |
| | city boundary |

3

Fig. 2.2 for Question 2

Content removed due to copyright restrictions.

4

Fig. 4.2 for Question 4



Fig. 5.1 for Question 5

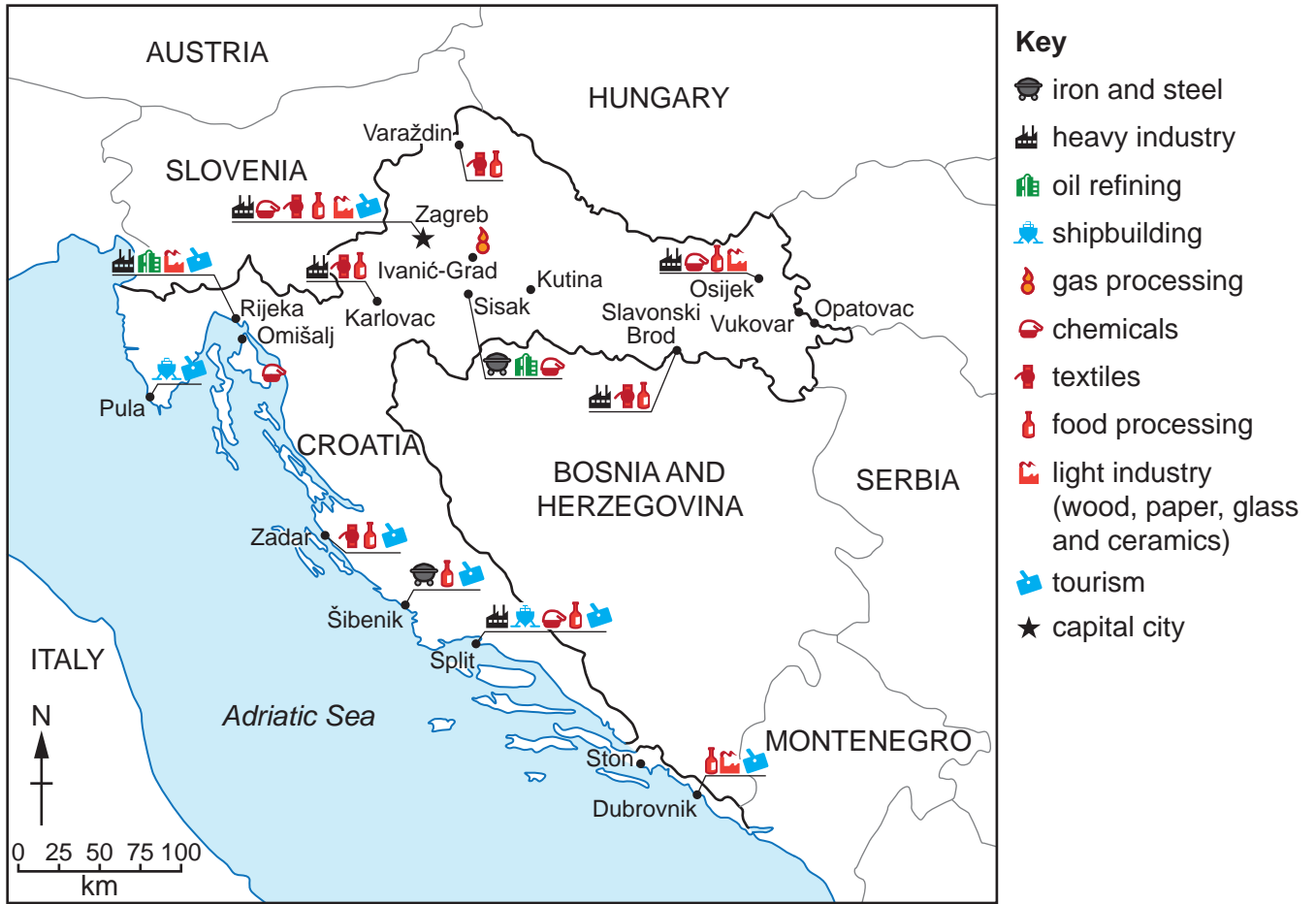


Fig. 5.2 for Question 5



Fig. 5.3 for Question 5



Fig. 5.4 for Question 5



The boundaries and names shown, the designations used and the presentation of material on any maps contained in this question paper/inset do not imply official endorsement or acceptance by Cambridge Assessment International Education concerning the legal status of any country, territory, or area or any of its authorities or of the delimitation of its frontiers or boundaries.

Permission to reproduce items where third-party owned material protected by copyright is included has been sought and bearing where possible. Every reasonable effort has been made by the publisher (UCLES) to trace copyright holders but if any items requiring clearance have unwittingly been included, the publisher will be pleased to make amends at the earliest possible opportunity.

To avoid the issue of disclosure of answer-related information to candidates all copyright acknowledgements are reproduced online in the Cambridge Assessment International Education Copyright Acknowledgements Booklet. This is produced for each series of examinations and is freely available to download at www.cambridgeinternational.org after the live examination series.

Cambridge Assessment International Education is part of Cambridge Assessment. Cambridge Assessment is the brand name of the University of Cambridge Local Examinations Syndicate (UCLES), which is a department of the University of Cambridge.