

Surname	Centre Number	Candidate Number
First name(s)		2



GCE AS/A LEVEL

2110U20-1



WEDNESDAY, 24 MAY 2023 – MORNING

GEOGRAPHY – AS unit 2 CHANGING PLACES

1 hour 30 minutes

For Examiner's use only		
Question	Maximum Mark	Mark Awarded
1.	15	
2.	17	
3.	14	
4.	9	
5.	9	
Total	64	

ADDITIONAL MATERIALS

A calculator.

INSTRUCTIONS TO CANDIDATES

Use black ink or black ball-point pen. Do not use gel pen or correction fluid.

You may use a pencil for graphs and diagrams only.

Write your name, centre number and candidate number in the spaces at the top of this page.

Write your answers in the spaces provided in this booklet.

Answer **all** questions in Section A and Section B.

If further space is required you should use the additional page(s) at the back of this booklet. The question number(s) should be clearly shown.

INFORMATION FOR CANDIDATES

The number of marks is given in brackets [] at the end of each question or part-question; you are advised to divide your time accordingly.

This paper requires that you make as full use as possible of appropriate examples and reference to data to support your answers. Sketch maps and diagrams should be included where relevant.

A plain page is available near the back of the booklet for you to add any relevant sketch maps and diagrams you may wish to include. The question number(s) should be clearly shown.



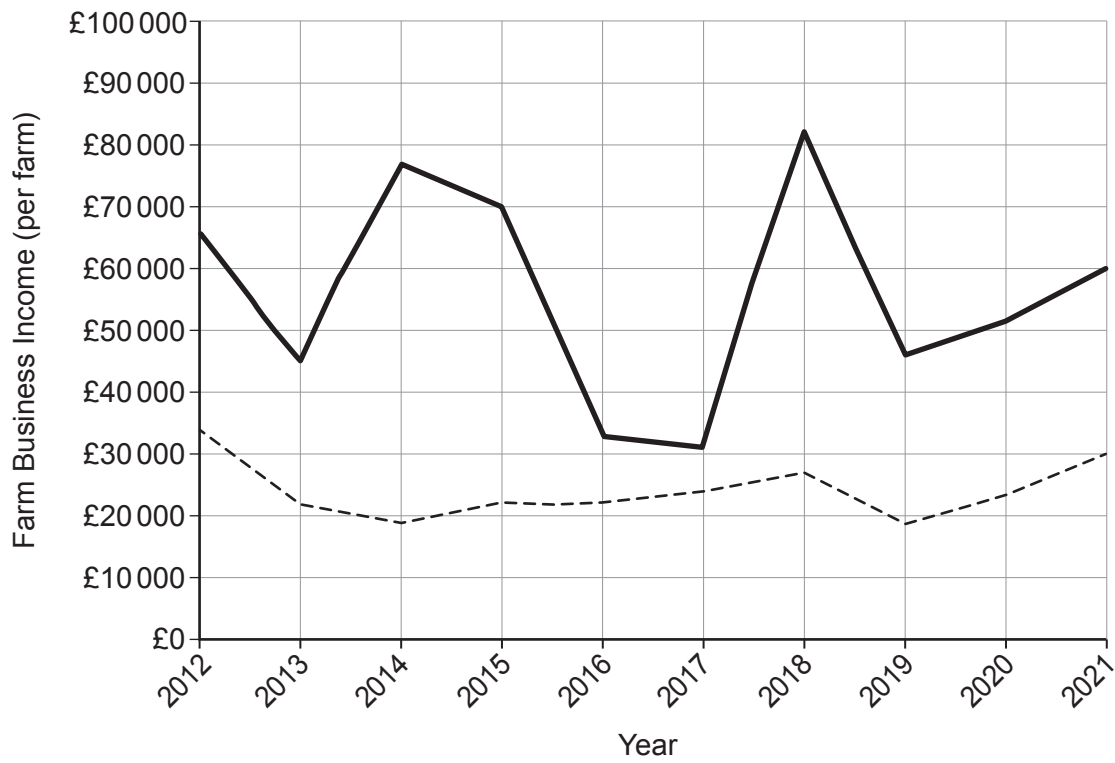
JUN232110U20101

Section A: Changing Places

Answer **all** questions.

Make the fullest use of examples and data to support your answers.

Figure 1: Annual farm business incomes in Wales, 2012–2021



Source: <http://www.assembly.wales>

Key:

- dairy farms
- - - non-dairy farms (sheep and cattle)



1. (a) (i) Use **Figure 1** to compare the incomes of dairy farms and non-dairy farms (sheep and cattle) between 2012 and 2021. [5]

.....
.....
.....
.....
.....
.....
.....
.....
.....
.....
.....

(ii) Suggest **one** ongoing challenge that may be evident in rural places as a result of the trends shown in **Figure 1** for non-dairy farm (sheep and cattle) incomes. [2]

.....
.....
.....
.....

2110U201
03



(b) Examine the impacts of quaternary industry clusters on people and places.

[8]

Examiner
only

.....

.....

.....

.....

.....

.....

.....

.....

.....

.....

.....

.....

.....

.....

.....

.....

.....

.....

.....

.....

.....

.....

.....

.....

.....

Additional space for question 1(b) only:

.....

.....

.....

.....





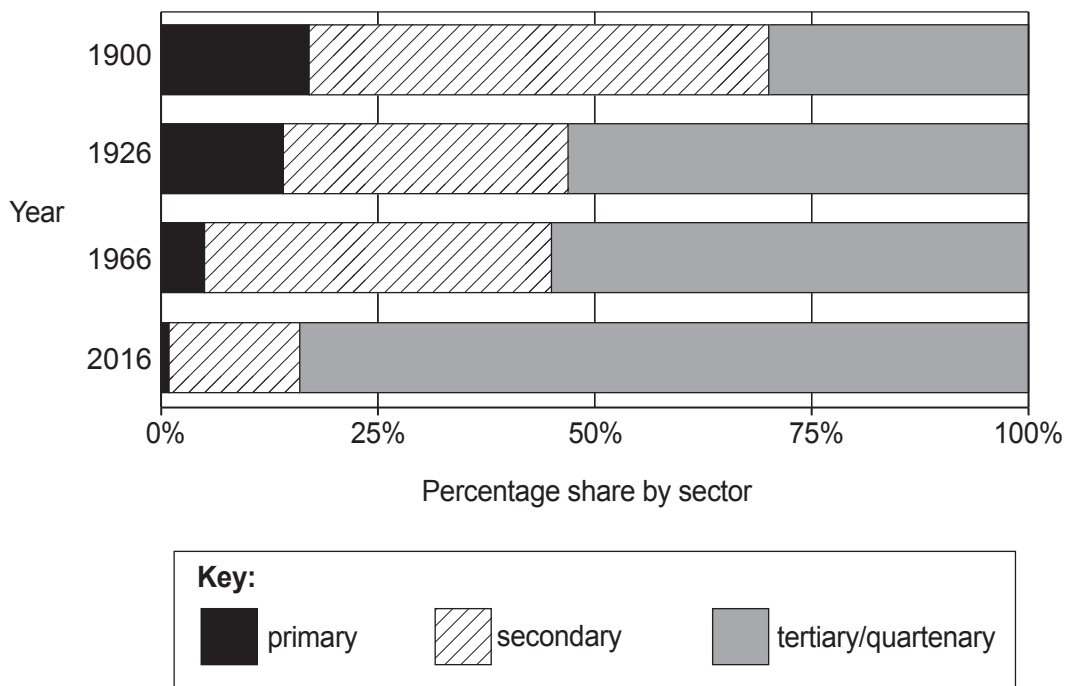
BLANK PAGE

**PLEASE DO NOT WRITE
ON THIS PAGE**

2110U201
05



Figure 2: Employment structure of England and Wales, 1900–2016



Source: Adapted from ons.gov.uk

2. (a) (i) Use **Figure 2** to analyse changes over time in the employment structure shown. [5]

.....

.....

.....

.....

.....

.....

.....

.....

.....

.....

.....

.....

.....

.....

.....

.....

.....

.....

.....

.....

.....

.....



(ii) Suggest how the changing employment structure shown in **Figure 2** is influenced by globalisation. [4]

.....

.....

.....

.....

.....

.....

.....

.....

(b) Examine the impacts of regeneration on individuals and businesses in urban areas. [8]

.....

.....

.....

.....

.....

.....

.....

.....

.....

.....

.....

.....

.....

.....

.....

.....

.....

.....

.....

.....

.....

2110U201
07



Examiner
only

Additional space for question 2(b) only:

.....

.....

.....

.....





BLANK PAGE

**PLEASE DO NOT WRITE
ON THIS PAGE**

2110U201
09



Section B: Fieldwork Investigation in Physical and Human Geography

Answer **all** questions.

In your answers to Section B you should include evidence from **your** fieldwork investigations in physical geography and human geography.

An AS Geography student collected secondary information on some of the most popular tourist activities in North West Wales. The student presented the information on a map, shown in **Figure 3**.

Figure 3: Map showing selected tourist activities in North West Wales



Examiner
only

3. (a) Use **Figure 3** only to explain why North West Wales is a popular tourist destination. [4]

.....

.....

.....

.....

.....

.....

.....

.....

.....

.....

(b) Examine the strengths and weaknesses of the data presentation method used in **Figure 3**. [6]

.....

.....

.....

.....

.....

.....

.....

.....

.....

.....

.....

.....

.....

.....

.....

.....

.....

.....

.....

.....

.....

.....

.....



Examiner
only

(c) Suggest **one** source of secondary information the student may have used to collect the data shown in **Figure 3**. [1]

.....
.....

(d) Assess the reliability of your selected source of secondary information in **3(c)**. [3]

.....
.....
.....
.....
.....
.....



BLANK PAGE

**PLEASE DO NOT WRITE
ON THIS PAGE**



Examiner
only

4. Evaluate the reliability of the findings of your **physical** geography fieldwork investigation. [9]

You should state clearly the title of your **physical** geography investigation.

Title:

.....

.....

.....

.....

.....

.....

.....

.....

.....

.....

.....

.....

.....

.....

.....

.....

.....

.....

.....

.....

.....

.....



Examiner
only

Additional space for question 4 only:

.....

.....

.....

.....



Examiner
only

Additional space for question 5 only:

.....

.....

.....

.....

END OF PAPER



Examiner
only

Question number	Additional page, if required for diagrams. Write the question number(s) in the left-hand margin.



