

OCR

Oxford Cambridge and RSA

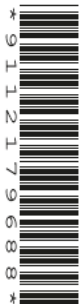
Friday 17 June 2022 – Afternoon

A Level Geography

H481/03 Geographical debates

Resource Booklet

Time allowed: 2 hours 30 minutes



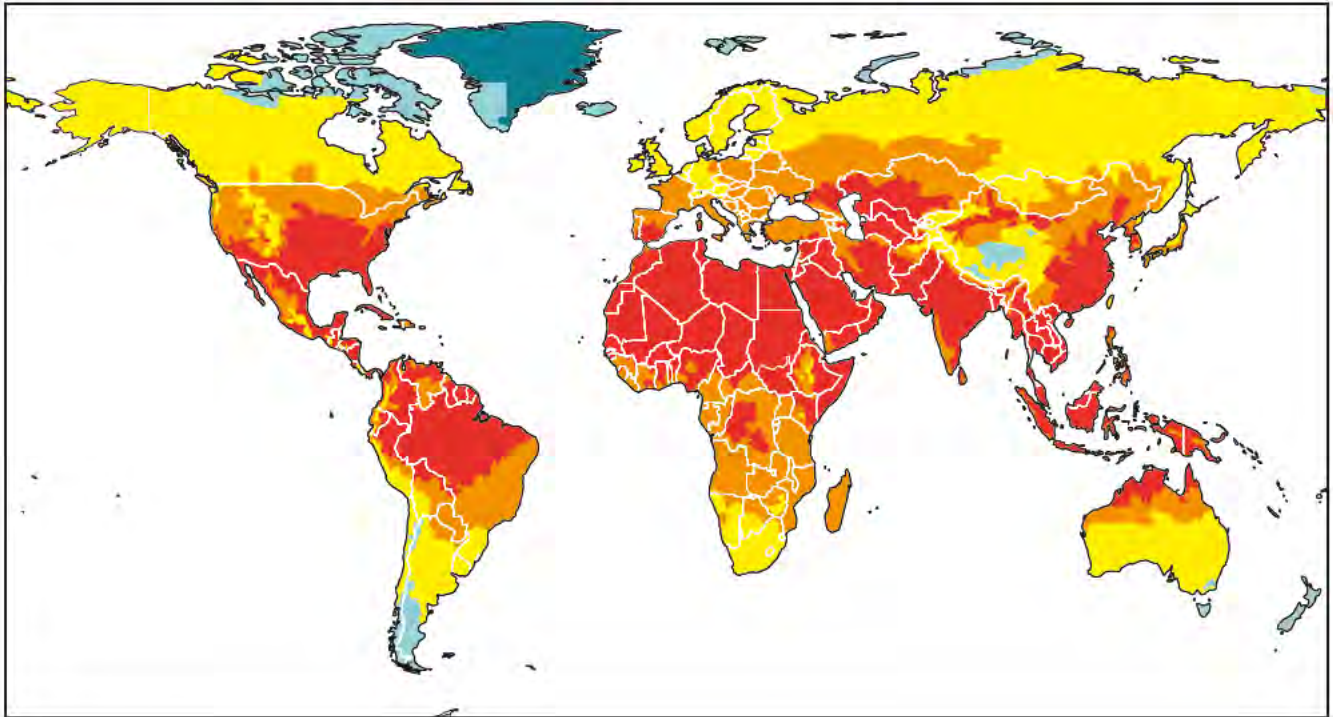
INSTRUCTIONS

- Do **not** send this Resource Booklet for marking. Keep it in the centre or recycle it.

INFORMATION

- This document has **8** pages.

Fig. 1 – Predicted global surface temperatures



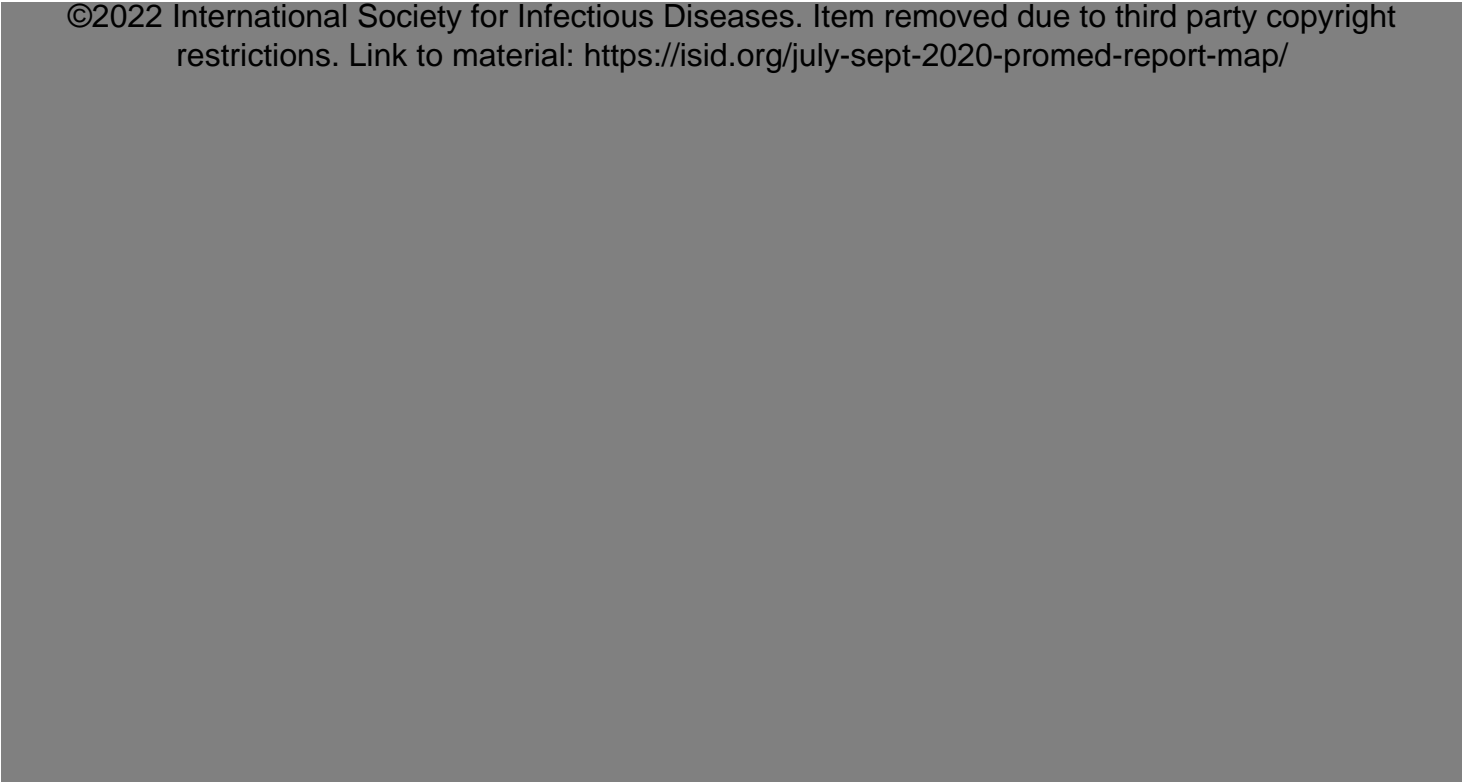
Key:

Predicted average July temperature 2020–2039

- 27 °C and above
- 18 to 26 °C
- 7 to 17 °C
- 9 to 6 °C
- 10 °C and below

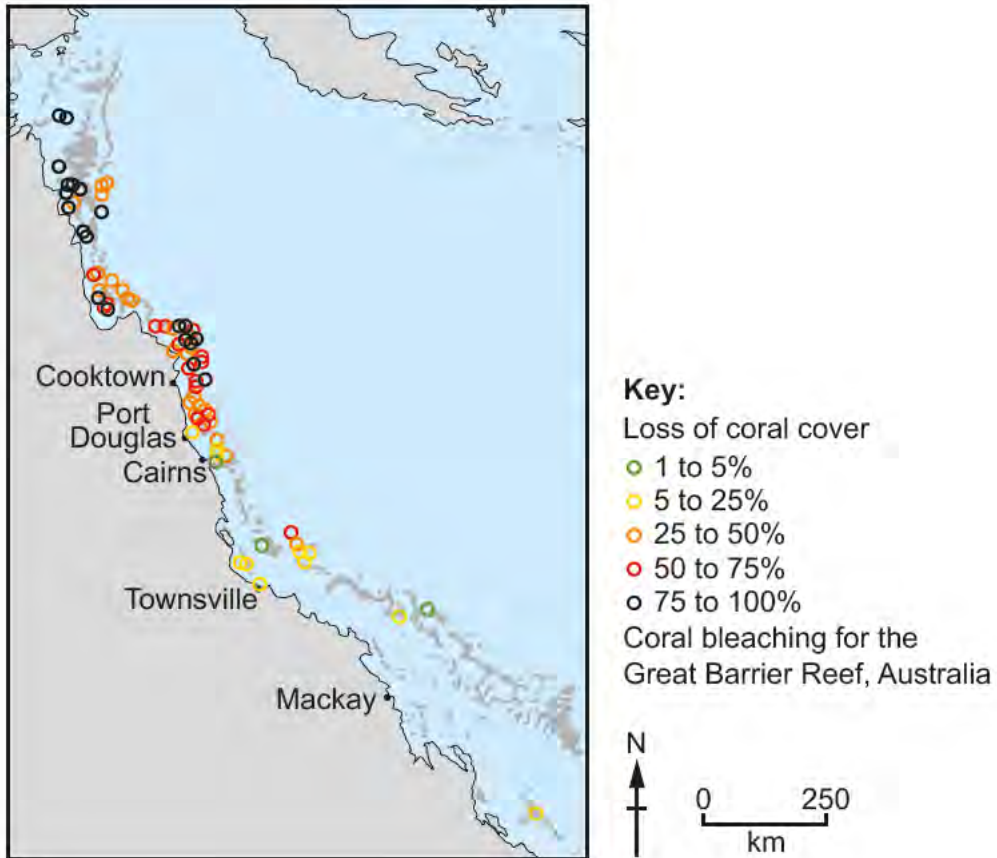
Fig. 2 – Reported outbreaks of communicable diseases

©2022 International Society for Infectious Diseases. Item removed due to third party copyright restrictions. Link to material: <https://isid.org/july-sept-2020-promed-report-map/>



Words represent number of reports in 2020, but word location does not always correspond to the exact location of disease outbreak report.

Fig. 3 – Coral bleaching



Coral loss is a result of coral bleaching.

Fig. 4 – Sketch of wheat farming in the Gobi desert

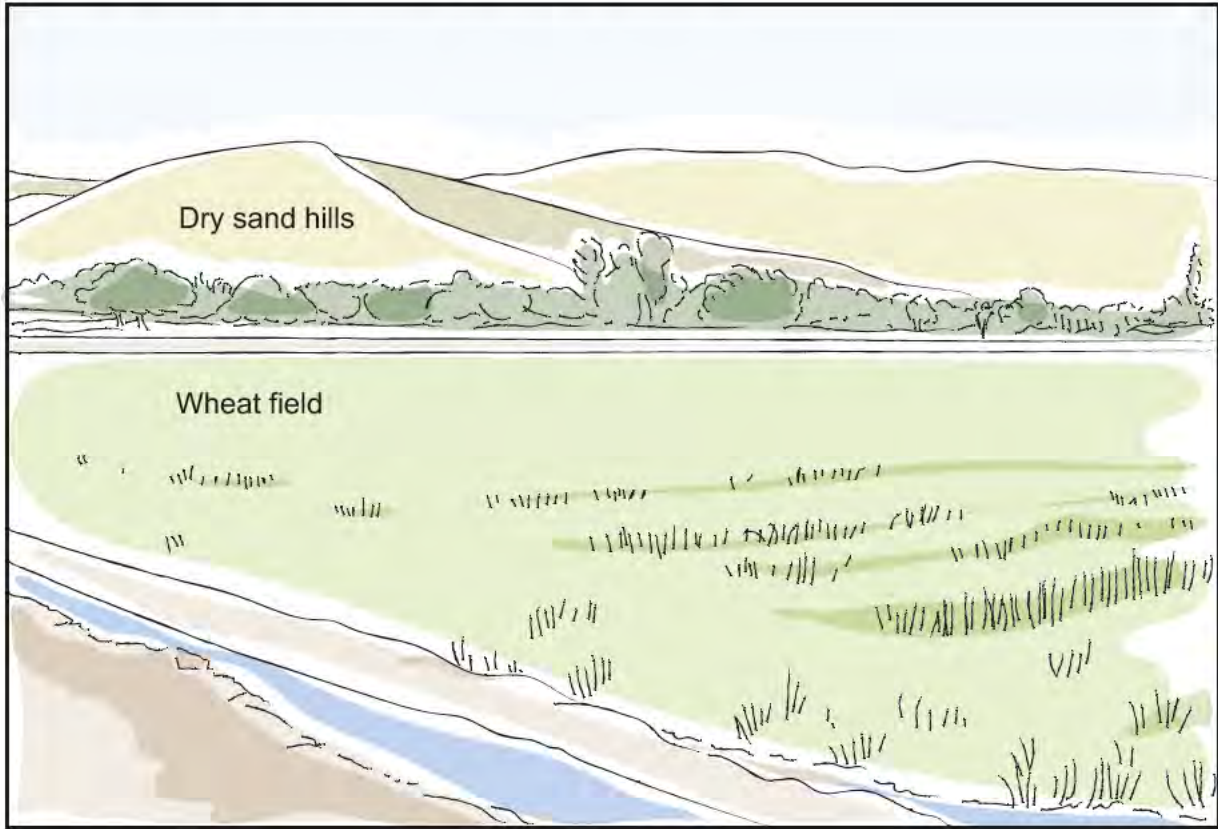
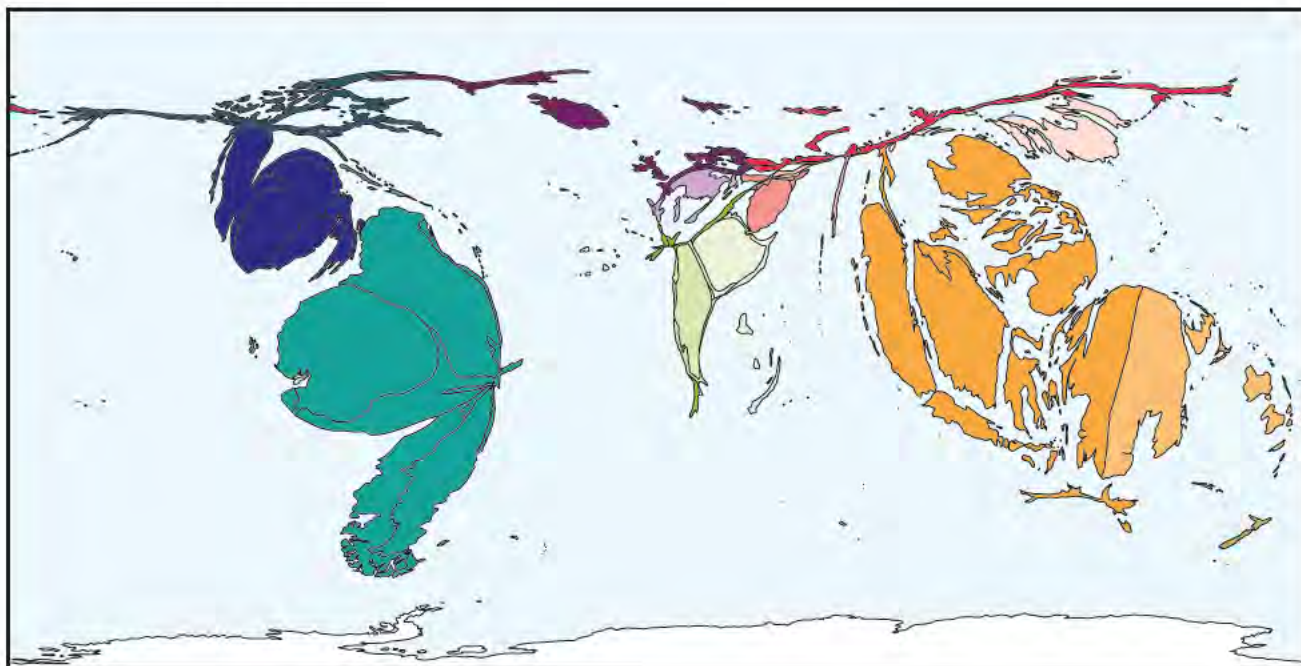


Fig. 5 – Volcanic eruptions



This map shows the proportion of all volcanoes erupting between 2000 and 2017. The size of the country represents the proportion of the volcanic eruptions in the world (between 2000 and 2017) that occurred in that country. Colours are used to distinguish between different global regions.

BLANK PAGE

OCR

Oxford Cambridge and RSA

Copyright Information

OCR is committed to seeking permission to reproduce all third-party content that it uses in its assessment materials. OCR has attempted to identify and contact all copyright holders whose work is used in this paper to avoid the issue of disclosure of answer-related information to candidates. All copyright acknowledgements are reproduced in the OCR Copyright Acknowledgements Booklet, which is produced for each series of examinations and is freely available to download from our public website (www.ocr.org.uk) after the live examination series.

OCR has unwittingly failed to correctly acknowledge or clear any third-party content in this assessment material. OCR will be happy to correct its mistake at the earliest possible opportunity.

For queries or further information please contact the OCR Copyright Team, Triangle Building, Shaftesbury Road, Cambridge CB2 8EA.

OCR is part of Cambridge University Press & Assessment, which is itself a department of the University of Cambridge.