

Pearson Edexcel Level 3 GCE

Thursday 4 June 2020

Afternoon (Time: 2 hours 15 minutes)

Paper Reference **9GE0/02**

Geography

Advanced

Paper 2

Resource Booklet

Do not return this Resource Booklet with the question paper.

Turn over ►

P62635A

©2020 Pearson Education Ltd.

1/1/1/1/1/1/1/1/e2



Pearson

BLANK PAGE

SECTION B

The following resource relates to Question 3(a).

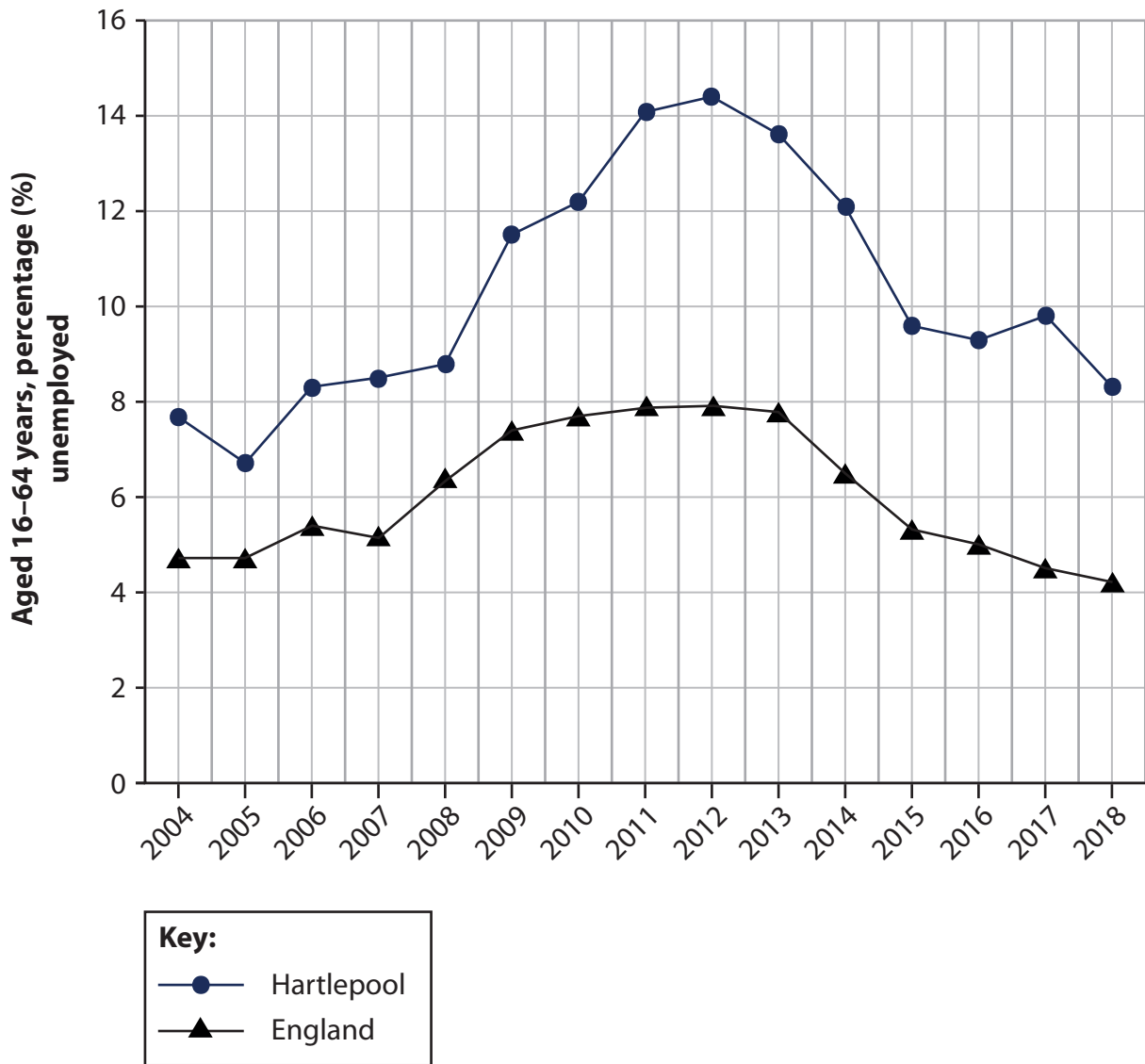


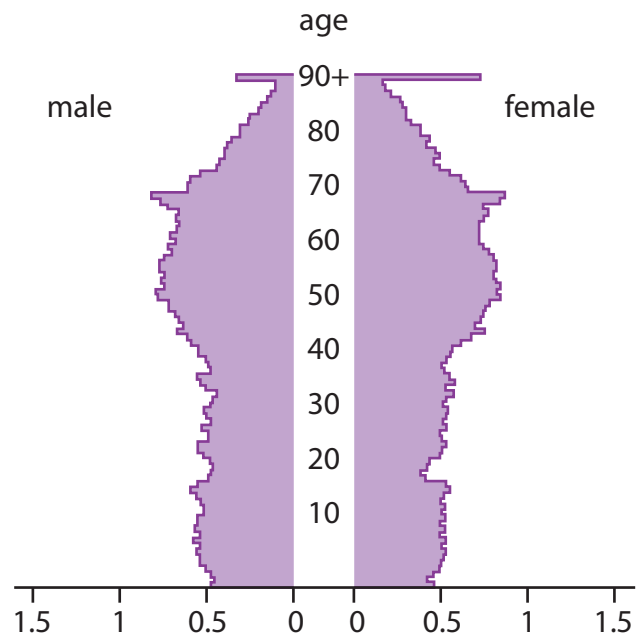
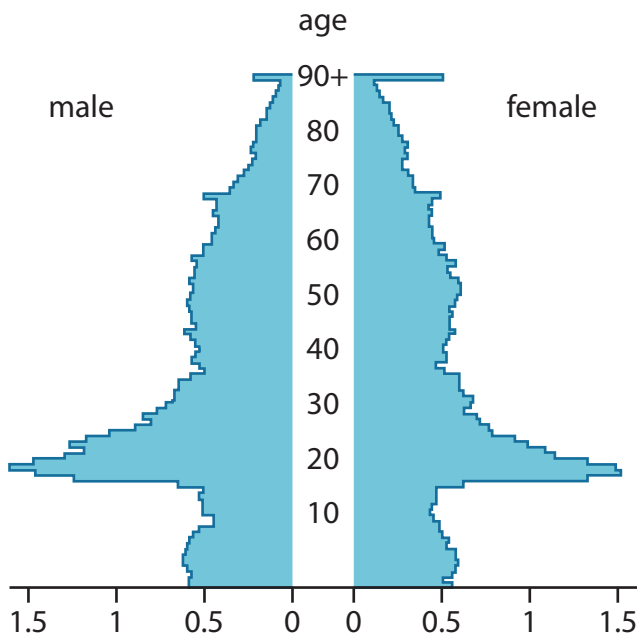
Figure 3

Changes in unemployment rates in Hartlepool (urban area in north-east England) and England between 2004 and 2018

The following resources relate to Question 4(a).

**Newcastle-upon-Tyne
(a university city)**

**Northumberland
(a largely rural county)**



percentage of population in age band

percentage of population in age band

**Non-UK born in
Newcastle-upon-Tyne**
17%

**Non-UK born in
Northumberland**
3%

Figure 4a

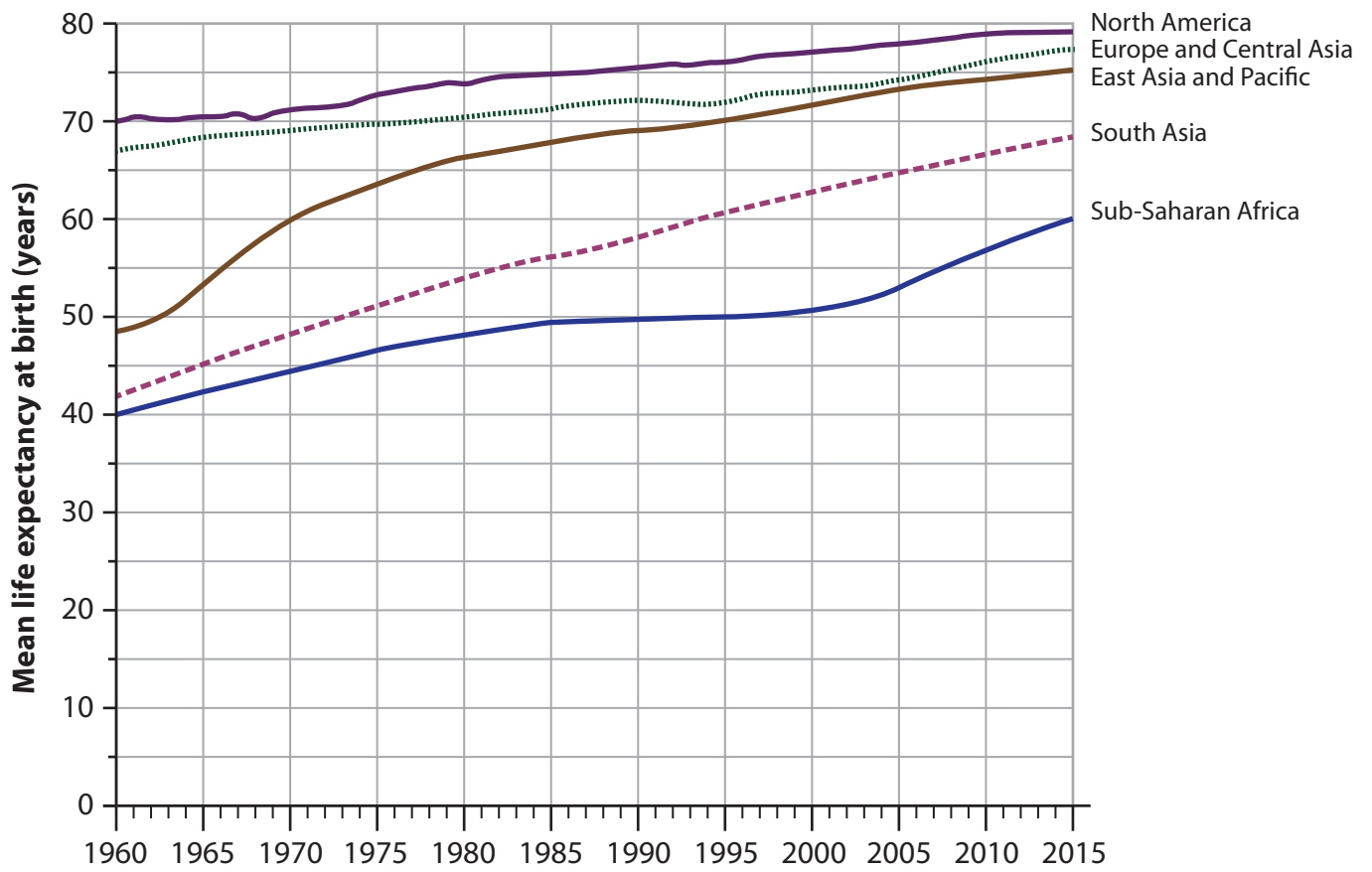
Figure 4b

Population pyramid and non-UK born data for Newcastle-upon-Tyne, North East England

Population pyramid and non-UK born data for Northumberland, North East England

SECTION C

The following resource relates to Question 5(b).



Region	% Increase between 1960 and 2015
North America	13
Europe and Central Asia	15
East Asia and Pacific	56
South Asia	57
Sub-Saharan Africa	50

Figure 5

Mean life expectancy at birth for selected world regions from 1960 to 2015

The following resource relates to Question 6(b).

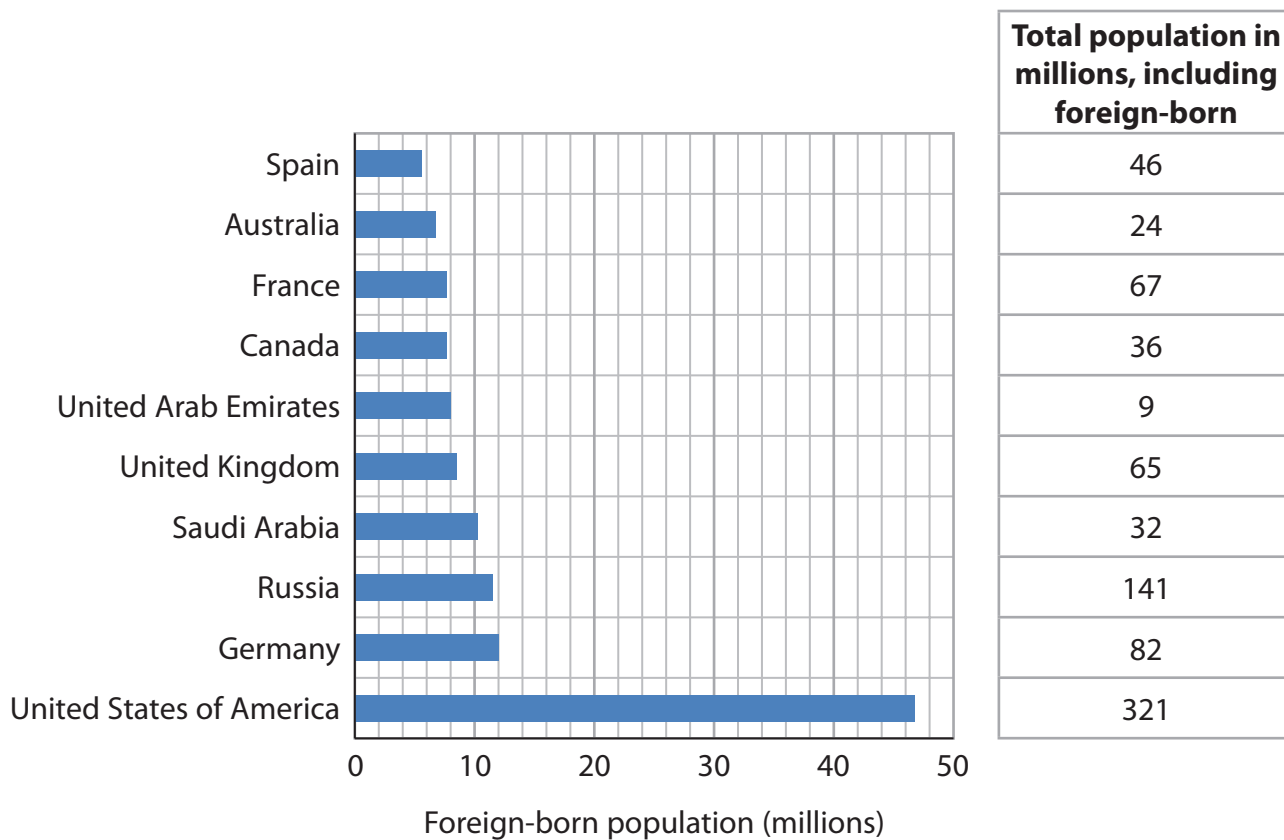


Figure 6

Foreign-born population (international migrants) by destination country, 2018

BLANK PAGE

BLANK PAGE

Pearson Education Ltd. gratefully acknowledges all following sources used in preparation of this paper:

Figure 3 (Source: <http://www.teesjsna.org.uk/employment>)

Figure 4a (Source: Open Government Licence v3.0)

Figure 4b (Source : © Crown copyright)

Figure 5 (Source : © 2019 The World Bank Group)

Figure 6 (Source: © United Nations)