

Please check the examination details below before entering your candidate information

Candidate surname					Other names				
Centre Number					Candidate Number				
<input type="text"/>	<input type="text"/>	<input type="text"/>	<input type="text"/>	<input type="text"/>	<input type="text"/>	<input type="text"/>	<input type="text"/>	<input type="text"/>	<input type="text"/>

Pearson Edexcel International Advanced Level

Time 1 hour 30 minutes

Paper reference **WGE02/01**

Geography

International Advanced Subsidiary

PAPER 2: Geographical Investigations

You must have:
Resource Booklet (enclosed)

Total Marks

Instructions

- Use **black** ink or ball-point pen.
- **Fill in the boxes** at the top of this page with your name, centre number and candidate number.
- Answer **all** questions in **Sections A and B**.
- In **Section C** answer **EITHER Question 4 OR Question 5**.
- Answer the questions in the spaces provided
– *there may be more space than you need.*

Information

- The total mark for this paper is 60.
- The marks for **each** question are shown in brackets
– *use this as a guide as to how much time to spend on each question.*
- Calculators may be used.

Advice

- Read each question carefully before you start to answer it.
- Check your answers if you have time at the end.

Turn over ►

P70695A

©2022 Pearson Education Ltd.

L:1/1/1/1



Pearson

SECTION A

Crowded Coasts

Answer ALL questions in this section. Write your answers in the spaces provided.

1 Study Figure 1 in the Resource Booklet.

(a) (i) Identify the coastal mass movements labelled A and B.

(2)

A.....

B.....

(ii) Explain **one** geological factor that affects coastal mass movement.

(2)

.....

.....

.....

.....

DO NOT WRITE IN THIS AREA

DO NOT WRITE IN THIS AREA

DO NOT WRITE IN THIS AREA



(b) Examine the severity of threats to coastal ecosystems.

(8)

DO NOT WRITE IN THIS AREA

DO NOT WRITE IN THIS AREA

DO NOT WRITE IN THIS AREA

Area with horizontal dotted lines for writing.

(Total for Question 1 = 12 marks)



Urban Problems, Planning and Regeneration

2 Study Figure 2 in the Resource Booklet.

(a) (i) Identify **two** pieces of evidence that show this area is being regenerated.

(2)

1

2

(ii) Suggest **one** reason why regeneration is needed in areas such as this.

(2)

.....

.....

.....

.....

DO NOT WRITE IN THIS AREA

DO NOT WRITE IN THIS AREA

DO NOT WRITE IN THIS AREA



(b) Assess the importance of sustainability in urban regeneration schemes.

(8)

DO NOT WRITE IN THIS AREA

DO NOT WRITE IN THIS AREA

DO NOT WRITE IN THIS AREA

Area with horizontal dotted lines for writing.

(Total for Question 2 = 12 marks)

TOTAL FOR SECTION A = 24 MARKS



SECTION B

Compulsory Fieldwork Section

Answer ALL questions in this section. Write your answers in the spaces provided.

3 You have undertaken geography fieldwork as part of the course.

Use this experience to answer Question 3.

State the title or question of your geographical investigation:

.....
.....

(a) Explain how you managed **one** risk of the fieldwork part of your geographical investigation. (2)

.....
.....
.....
.....

(b) Explain how you used the **two** technologies below to plan your geographical investigation. (4)

The internet

.....
.....
.....
.....

GIS (Geographical Information Systems)

.....
.....
.....
.....

DO NOT WRITE IN THIS AREA

DO NOT WRITE IN THIS AREA

DO NOT WRITE IN THIS AREA



(c) Explain why you collected fieldwork data at a number of different sites and/or times.

(6)

(d) Evaluate the advantages and disadvantages of both the presentation and analysis methods used in your geographical investigation.

(12)

DO NOT WRITE IN THIS AREA

DO NOT WRITE IN THIS AREA

DO NOT WRITE IN THIS AREA



DO NOT WRITE IN THIS AREA

DO NOT WRITE IN THIS AREA

DO NOT WRITE IN THIS AREA

(Total for Question 3 = 24 marks)

TOTAL FOR SECTION B = 24 MARKS



SECTION C

Geographical Fieldwork and Skills

Answer ONE question in this section – EITHER Question 4 OR Question 5.

Write your answers in the spaces provided.

Some questions must be answered with a cross in a box . If you change your mind about an answer, put a line through the box and then mark your new answer with a cross .

If you answer Question 4 put a cross in the box .

Investigating Crowded Coasts

- 4 A group of students studied the diversity of plants in a coastal zone as part of a wider study of coastal ecosystems.
- They sampled eight sites in two areas, A and B.
- At each site they counted the number of different plants found in a 1 metre square (1 m²) area.
- They then used a spreadsheet to calculate both the mean and the median for areas A and B.

Study Figure 3a.

Site number and number of different plant species (diversity)										
	1	2	3	4	5	6	7	8	Mean	Median
Area A	6	8	4	22	2	5	6	1	6.8	5.5
Area B	9	8	10	12	8	7	8	10	9.0	8.5

Figure 3a

A spreadsheet used to calculate the mean and median results

- (a) Explain **one** advantage of using the median value of plant diversity, rather than the mean value.

(2)

.....

.....

.....

.....



P 7 0 6 9 5 A 0 9 1 6

(b) Explain the disadvantages of using social media as a source of secondary information about a coastal resort.

(3)

.....

.....

.....

.....

.....

.....

(c)

The students also carried out an activity survey of visitors to a coastal resort. They classified visitors by age and their preferred type of activity.

Study Figure 3b.

Visitors' preferred activities	Age category					Totals
	<20	25–30	31–40	45–50	>51	
Fishing	2	0	1	10	12	25
Jet skiing	28	X	19	16	2	80
Sailing	1	7	5	0	12	25
Swimming	15	19	6	32	18	90
Surfing	22	28	9	7	14	80
Totals	68	69	40	65	58	300

Figure 3b

Results of the activity survey, 21 August 2020



(i) Calculate the missing value (X) for jet skiing.

(1)

X =

(ii) Identify the modal age category for swimming.

(1)

<input type="checkbox"/>	A 25–30
<input type="checkbox"/>	B 31–40
<input type="checkbox"/>	C 45–50
<input type="checkbox"/>	D >51

(iii) Explain **one** reason why the information in Figure 3b may be unreliable.

(2)

.....

.....

.....

.....

(d) Explain **one** way sample size can affect the reliability of conclusions.

(3)

.....

.....

.....

.....

.....

.....

.....

.....

(Total for Question 4 = 12 marks)

DO NOT WRITE IN THIS AREA

DO NOT WRITE IN THIS AREA

DO NOT WRITE IN THIS AREA



Investigating Urban Problems, Planning and Regeneration

If you answer Question 5 put a cross in the box .

- 5 A group of students studied the pedestrian flows in a city as part of a wider study of urban regeneration.
- They sampled eight sites in two areas, A and B.
- At each site they counted the number of people passing a point at every minute.
- They then used a spreadsheet to calculate both the mean and the median for areas A and B.

Study Figure 4a.

	Site number and number of pedestrians								Mean	Median
	1	2	3	4	5	6	7	8		
Area A	6	8	4	22	2	5	6	1	6.8	5.5
Area B	9	8	10	12	8	7	8	10	9.0	8.5

Figure 4a

A spreadsheet used to calculate mean and median fieldwork results

- (a) Explain **one** advantage of using the median value of pedestrian flow, rather than the mean value.

(2)

.....

.....

.....

.....



(b) Explain the disadvantages of using social media as a source of secondary information about an urban area.

(3)

.....

.....

.....

.....

.....

.....

(c) The students also carried out an activity survey of visitors to the city.
They classified visitors by age and their preferred type of activity.

Study Figure 4b.

Visitors' preferred activities	Age category					Totals
	<20	25–30	31–40	45–50	>51	
Shopping	2	0	1	10	12	25
Sightseeing	28	X	19	16	2	80
Eating out	1	7	5	0	12	25
Meeting friends	15	19	6	32	18	90
Walking	22	28	9	7	14	80
Totals	68	69	40	65	58	300

Figure 4b

Results of the activity survey, 21 August 2020

DO NOT WRITE IN THIS AREA

DO NOT WRITE IN THIS AREA

DO NOT WRITE IN THIS AREA



P 7 0 6 9 5 A 0 1 3 1 6

(i) Calculate the missing value (X) for sightseeing.

(1)

X =

(ii) Identify the modal age category for meeting friends.

(1)

<input type="checkbox"/>	A 25–30
<input type="checkbox"/>	B 31–40
<input type="checkbox"/>	C 45–50
<input type="checkbox"/>	D >51

(iii) Explain **one** reason why the information in Figure 4b may be unreliable.

(2)

.....

.....

.....

.....

(d) Explain **one** way sample size can affect the reliability of conclusions.

(3)

.....

.....

.....

.....

.....

.....

.....

.....

(Total for Question 5 = 12 marks)

TOTAL FOR SECTION C = 12 MARKS
TOTAL FOR PAPER = 60 MARKS

DO NOT WRITE IN THIS AREA

DO NOT WRITE IN THIS AREA

DO NOT WRITE IN THIS AREA



DO NOT WRITE IN THIS AREA

DO NOT WRITE IN THIS AREA

DO NOT WRITE IN THIS AREA

BLANK PAGE



DO NOT WRITE IN THIS AREA

DO NOT WRITE IN THIS AREA

DO NOT WRITE IN THIS AREA

BLANK PAGE



Pearson Edexcel International Advanced Level

Time 1 hour 30 minutes

Paper
reference

WGE02/01

Geography

International Advanced Subsidiary
PAPER 2: Geographical Investigations

Resource Booklet

Do not return this Booklet with the question paper.

Turn over ►

P70695A

©2022 Pearson Education Ltd.

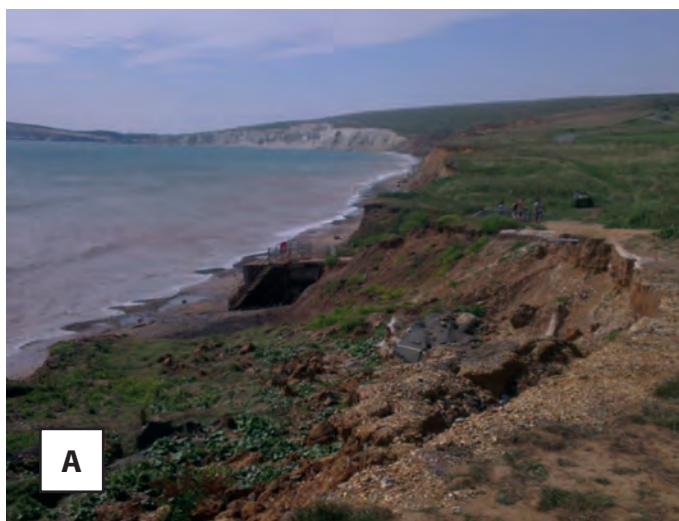
L:1/1/1/1



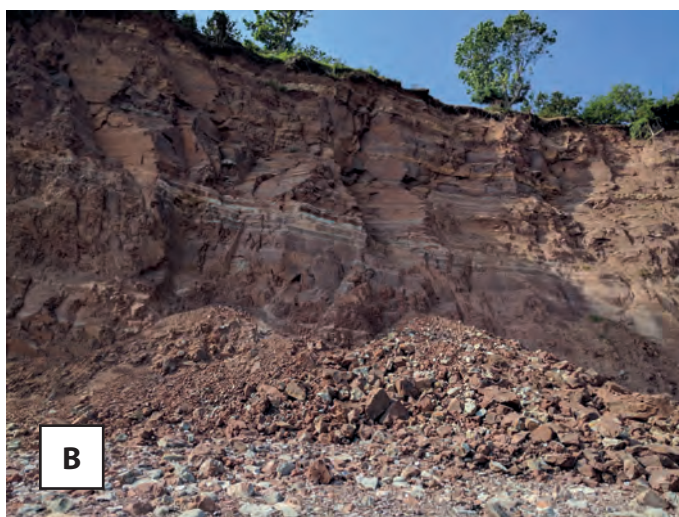

Pearson

SECTION A

This resource relates to Question 1.



Rate of mass movement 0.01 to 1 metres per second.



Rate of mass movement 10 to 100 metres per second.

Figure 1

Two different types of coastal mass movement

This resource relates to Question 2.



Figure 2

An area of Rotterdam being regenerated

BLANK PAGE

Acknowledgements

Pearson Education Ltd. gratefully acknowledges all following sources used in preparation of this paper:

Source 1a © Making Geography Matter / David Holmes

Source 1b © Making Geography Matter / David Holmes

Source 2: © Making Geography Matter / David Holmes

