

Cambridge
International
AS & A Level

Cambridge Assessment International Education
Cambridge International Advanced Subsidiary and Advanced Level

GEOGRAPHY

9696/33

Paper 3 Advanced Physical Geography Options

October/November 2019

INSERT

1 hour 30 minutes

READ THESE INSTRUCTIONS FIRST

This Insert contains all the resources referred to in the questions.



This document consists of **6** printed pages and **2** blank pages.

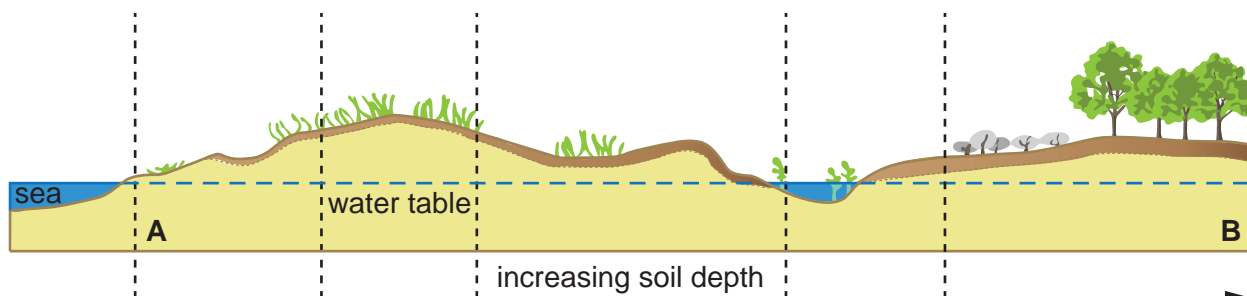
Fig. 1.1 for Question 1

A landform in a tropical environment



Fig. 4.1 for Question 4

A model of a coastal dune system



location/type of dune	strand line	embryo dunes	fore dunes	fixed dunes	dune slack	dune scrub	woodland
approximate distance from sea (m)	0–20	20–80	80–150	150–300	300–500	variable	variable
pH at surface of soil	8.5	8.0	7.5	7.0	6.5	6.0	6.0
soil colour	yellow			yellow and grey		grey	brown
% organic content	<1	2.5	5		20	>40	
% calcium carbonate	10	8		5	1	<0.1	

Fig. 7.1 for Question 7

The distribution of tornadoes in the USA, by state, in 2016

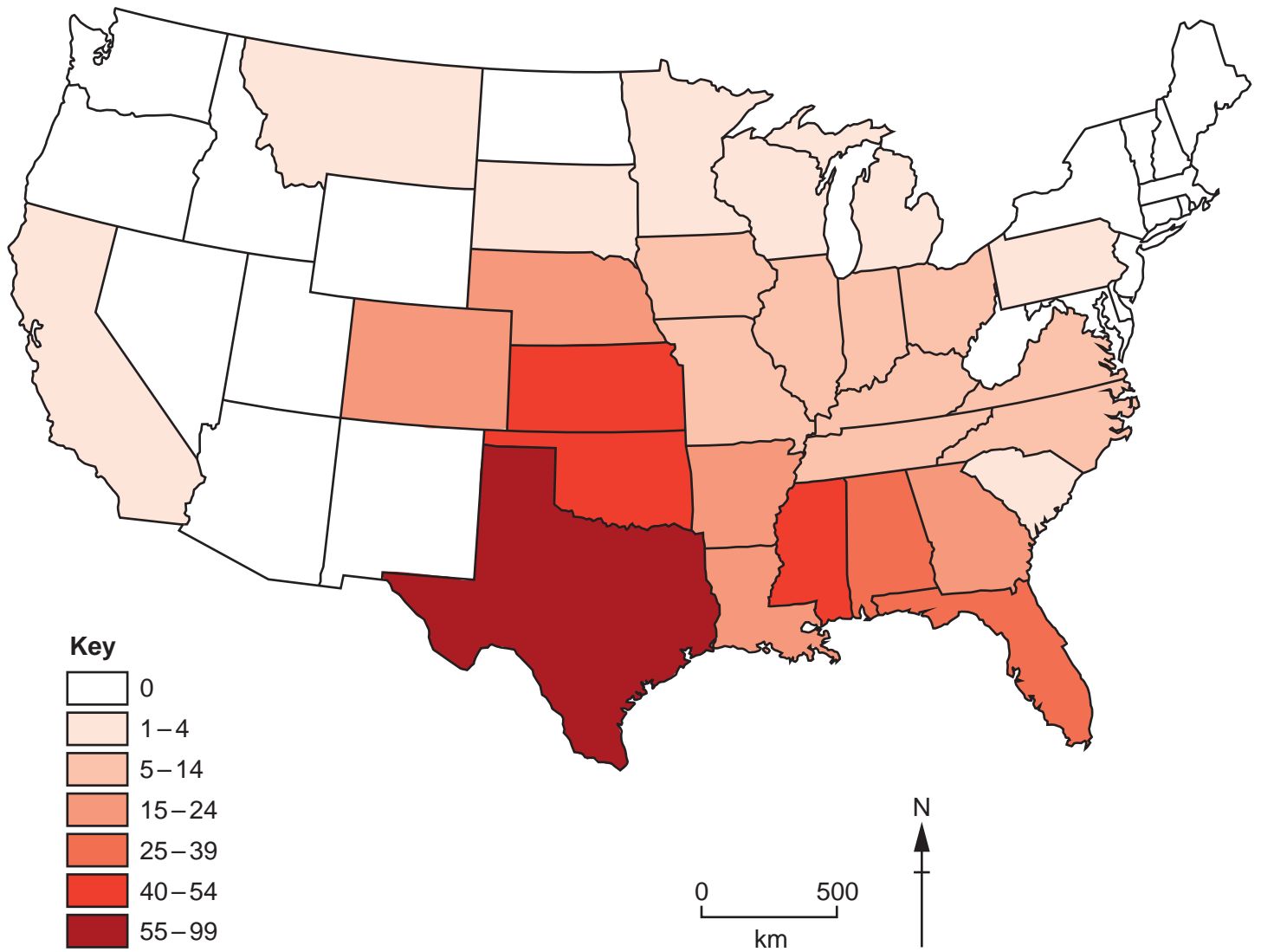


Fig. 7.2 for Question 7

The names of the states

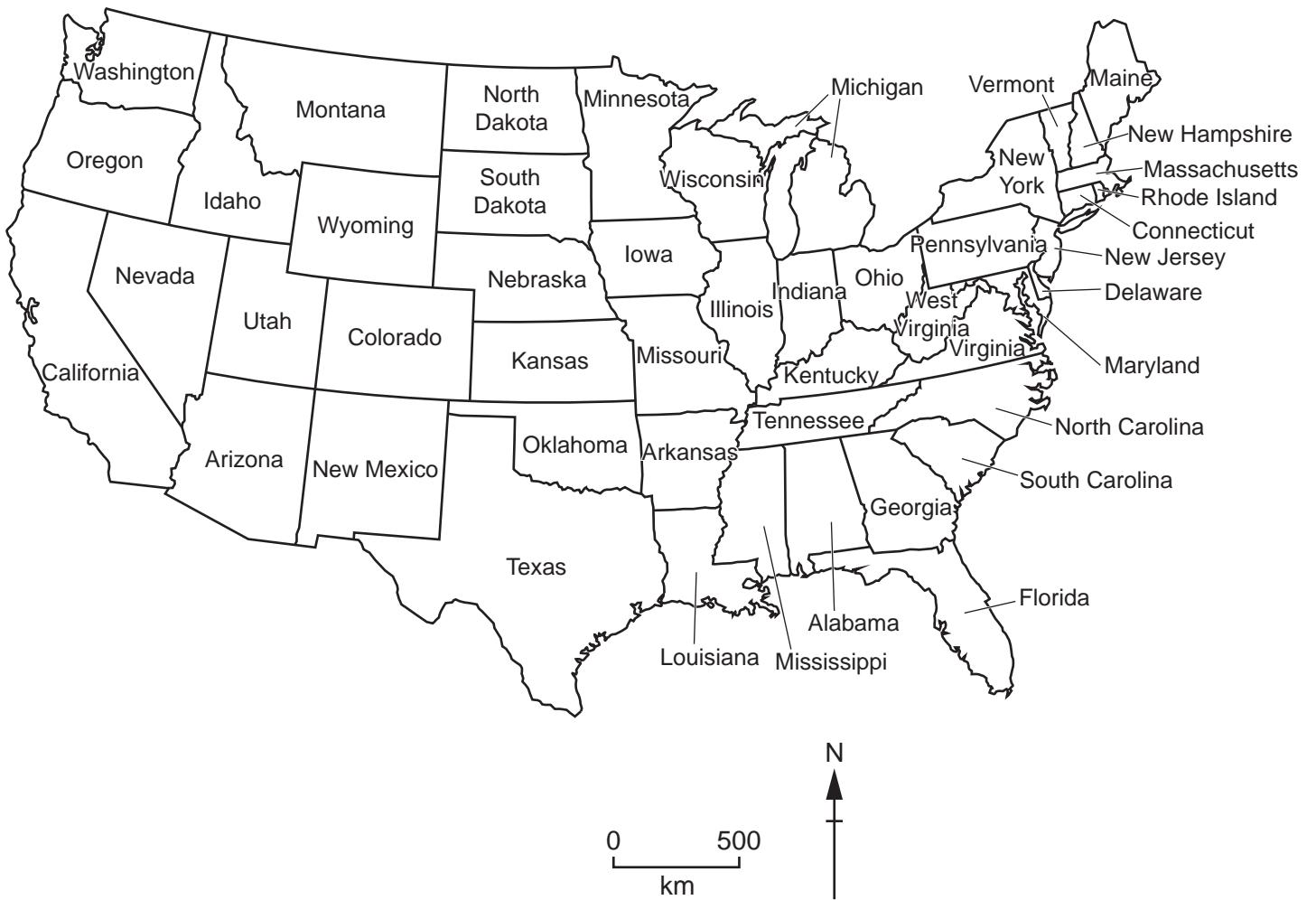
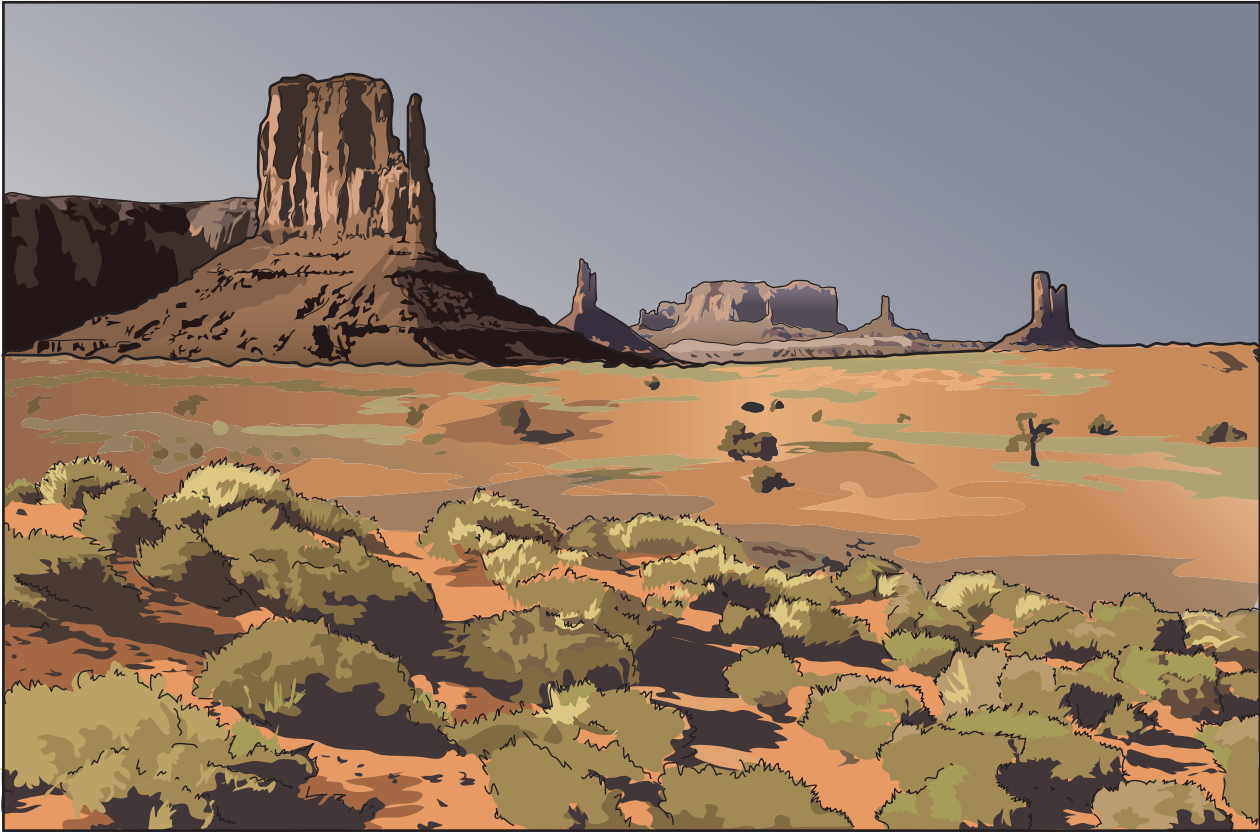


Fig. 10.1 for Question 10

Some landforms in a hot arid environment



BLANK PAGE

Permission to reproduce items where third-party owned material protected by copyright is included has been sought and cleared where possible. Every reasonable effort has been made by the publisher (UCLES) to trace copyright holders, but if any items requiring clearance have unwittingly been included, the publisher will be pleased to make amends at the earliest possible opportunity.

To avoid the issue of disclosure of answer-related information to candidates, all copyright acknowledgements are reproduced online in the Cambridge Assessment International Education Copyright Acknowledgements Booklet. This is produced for each series of examinations and is freely available to download at www.cambridgeinternational.org after the live examination series.

Cambridge Assessment International Education is part of the Cambridge Assessment Group. Cambridge Assessment is the brand name of the University of Cambridge Local Examinations Syndicate (UCLES), which itself is a department of the University of Cambridge.