

Cambridge  
International  
AS & A Level

**Cambridge Assessment International Education**  
Cambridge International Advanced Subsidiary and Advanced Level

---

**GEOGRAPHY**

**9696/31**

Paper 3 Advanced Physical Geography Options

**May/June 2019**

INSERT

**1 hour 30 minutes**

---

**READ THESE INSTRUCTIONS FIRST**

This Insert contains all the resources referred to in the questions.



---

This document consists of **5** printed pages and **3** blank pages.

Fig. 1.1 and Fig. 1.2 for Question 1

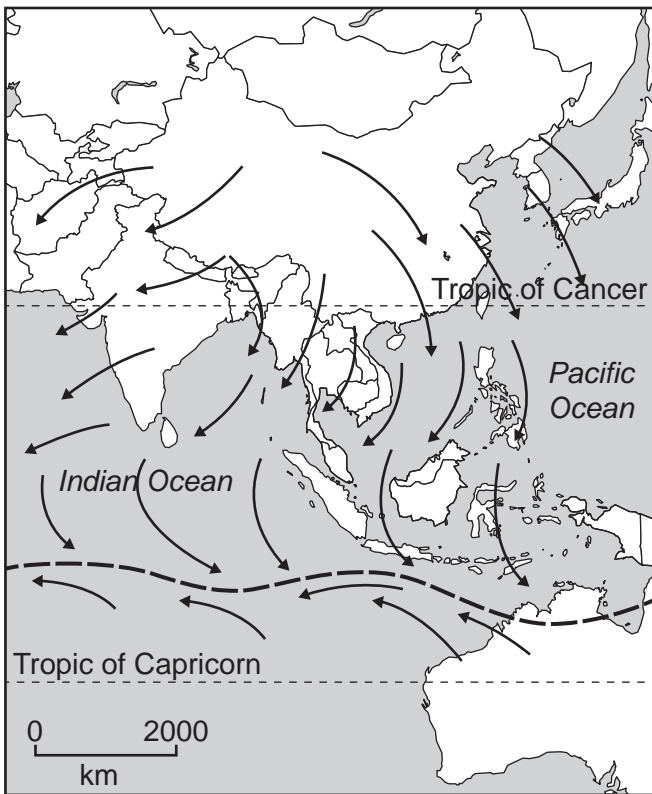


Fig. 1.1 Winter dry monsoon

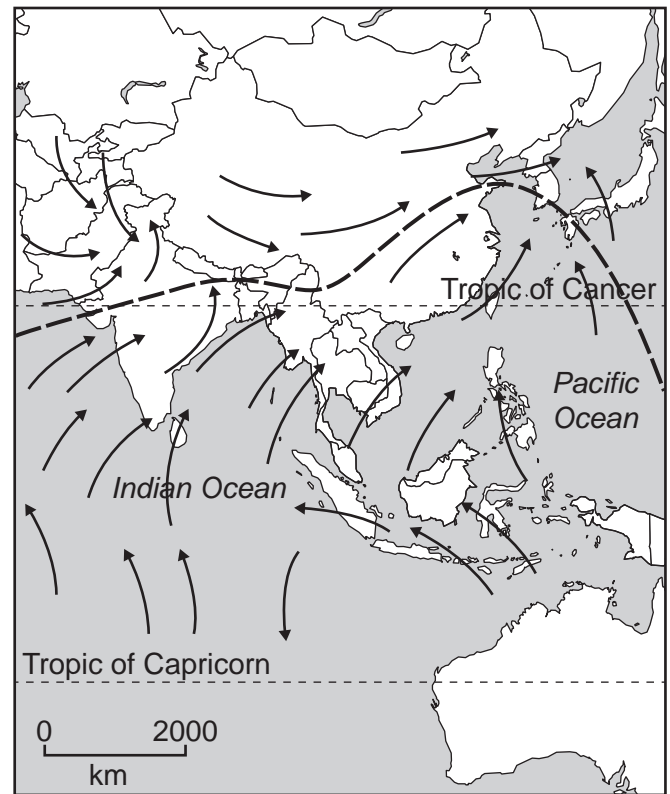


Fig. 1.2 Summer wet monsoon

**Key**

- intertropical convergence zone (ITCZ)
- direction of wind

3

Fig. 4.1 for Question 4

Some coastal landforms



Fig. 7.1 for Question 7  
 Earthquake activity in the area of Christchurch, New Zealand, 2010–12

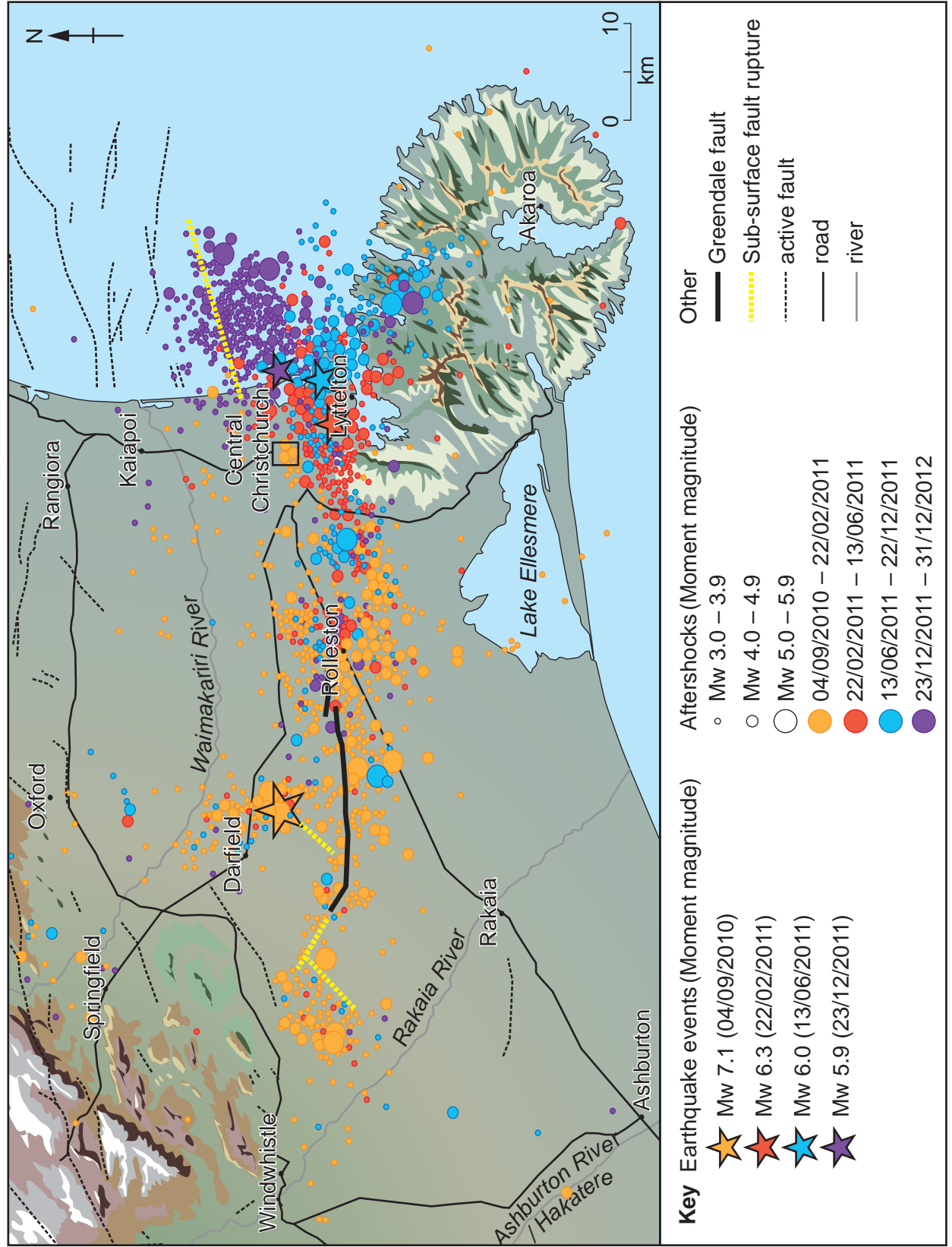


Fig. 10.1 for Question 10

Landforms in Death Valley, USA



**BLANK PAGE**

**BLANK PAGE**

**BLANK PAGE**

---

Permission to reproduce items where third-party owned material protected by copyright is included has been sought and cleared where possible. Every reasonable effort has been made by the publisher (UCLES) to trace copyright holders, but if any items requiring clearance have unwittingly been included, the publisher will be pleased to make amends at the earliest possible opportunity.

To avoid the issue of disclosure of answer-related information to candidates, all copyright acknowledgements are reproduced online in the Cambridge Assessment International Education Copyright Acknowledgements Booklet. This is produced for each series of examinations and is freely available to download at [www.cambridgeinternational.org](http://www.cambridgeinternational.org) after the live examination series.

Cambridge Assessment International Education is part of the Cambridge Assessment Group. Cambridge Assessment is the brand name of the University of Cambridge Local Examinations Syndicate (UCLES), which itself is a department of the University of Cambridge.