



# Cambridge International AS & A Level

---

**GEOGRAPHY****9696/21**

Paper 2 Core Human Geography

**October/November 2022**

INSERT

**1 hour 30 minutes**

---

**INFORMATION**

- This insert contains all the resources referred to in the questions.
- You may annotate this insert and use the blank spaces for planning. **Do not write your answers** on the insert.



---

This document has **4** pages.

Table 1.1 for Question 1

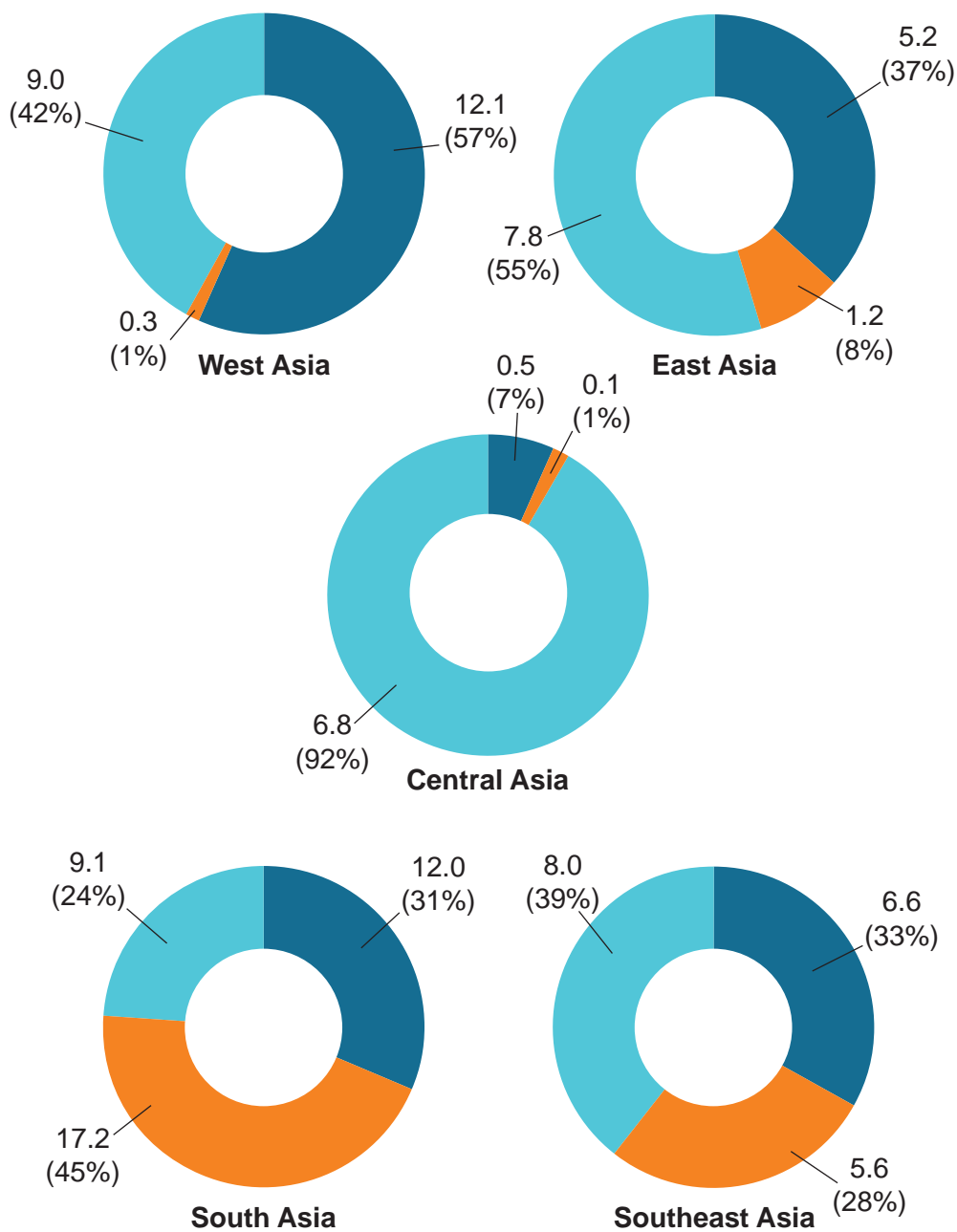
## Levels of food security for HICs, MICs and LICs in 2018

<b>level of food security</b>	<b>HICs</b>	<b>MICs</b>	<b>LICs</b>
high food security	1095	4413	261
moderate food security	81	847	244
low food security	21	477	190
total population	1197	5737	695

All figures show number of people in millions

Fig. 2.1 for Question 2

International migration for Asia, by sub-region, in 2015



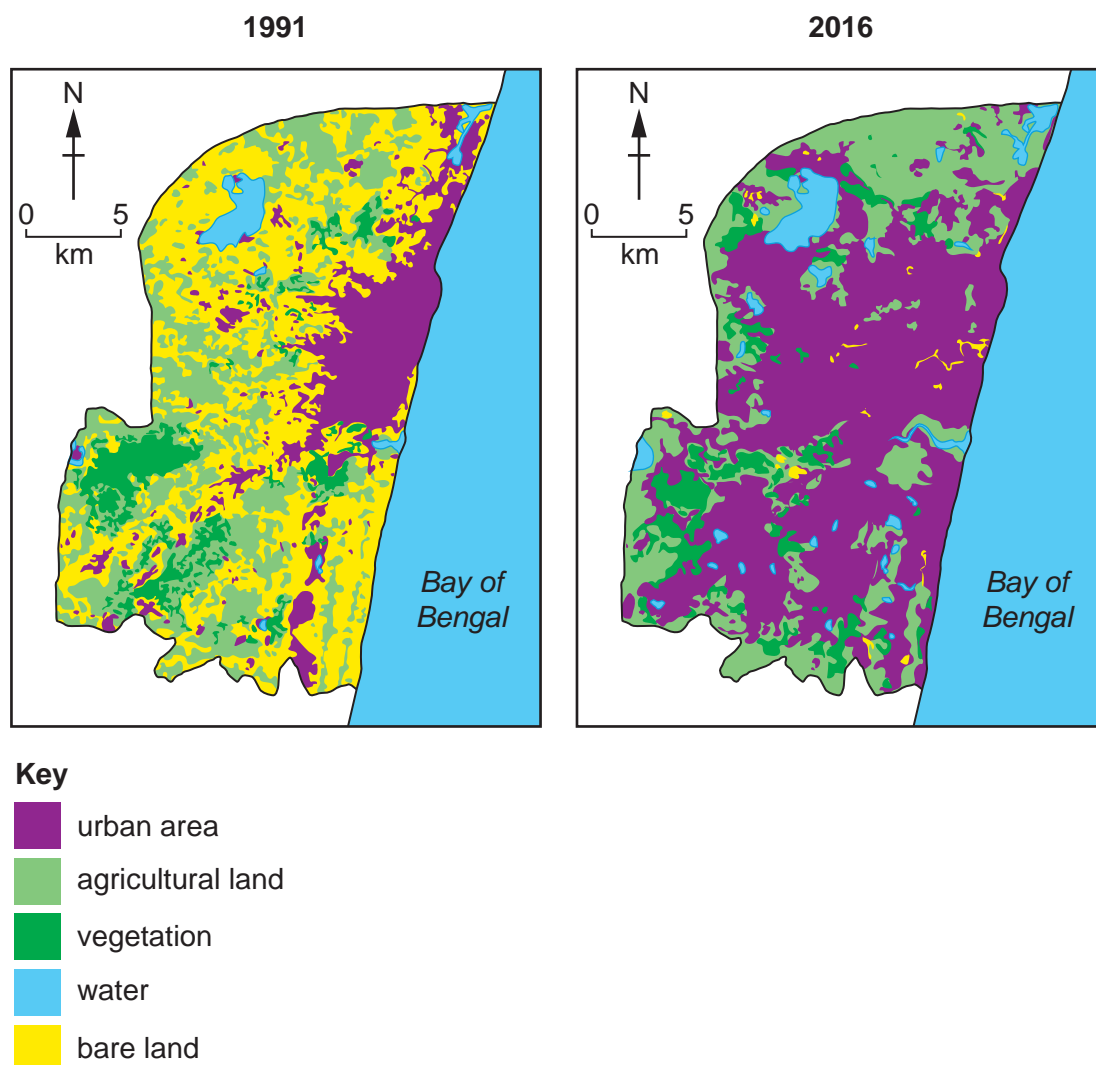
All figures show number of people in millions

**Key**

- migration within sub-region
- migration from sub-region to sub-region within Asia
- migration to other continents

Fig. 3.1 for Question 3

## Urban area of Chennai, India, an MIC in Asia, for 1991 and 2016



The boundaries and names shown, the designations used and the presentation of material on any maps contained in this question paper/insert do not imply official endorsement or acceptance by Cambridge Assessment International Education concerning the legal status of any country, territory, or area or any of its authorities, or of the delimitation of its frontiers or boundaries.

Permission to reproduce items where third-party owned material protected by copyright is included has been sought and cleared where possible. Every reasonable effort has been made by the publisher (UCLES) to trace copyright holders, but if any items requiring clearance have unwittingly been included, the publisher will be pleased to make amends at the earliest possible opportunity.

To avoid the issue of disclosure of answer-related information to candidates, all copyright acknowledgements are reproduced online in the Cambridge Assessment International Education Copyright Acknowledgements Booklet. This is produced for each series of examinations and is freely available to download at [www.cambridgeinternational.org](http://www.cambridgeinternational.org) after the live examination series.

Cambridge Assessment International Education is part of Cambridge Assessment. Cambridge Assessment is the brand name of the University of Cambridge Local Examinations Syndicate (UCLES), which is a department of the University of Cambridge.