

Cambridge  
International  
AS & A Level

**Cambridge International Examinations**  
Cambridge International Advanced Subsidiary and Advanced Level

**GEOGRAPHY**

**9696/13**

Paper 1 Core Geography

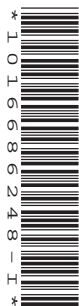
**May/June 2015**

INSERT

**3 hours**

**READ THESE INSTRUCTIONS FIRST**

This Insert contains all the Figures and the Table referred to in the questions.

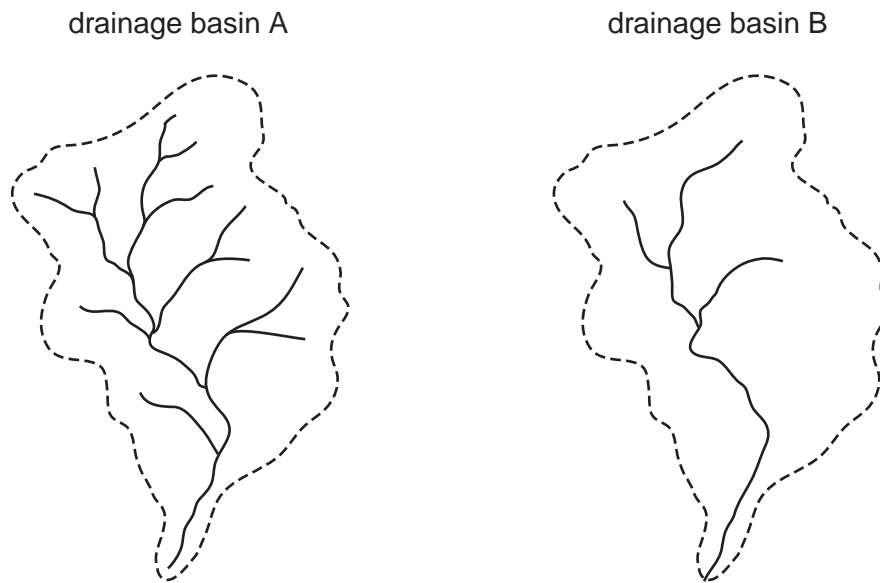


This document consists of **7** printed pages and **1** blank page.

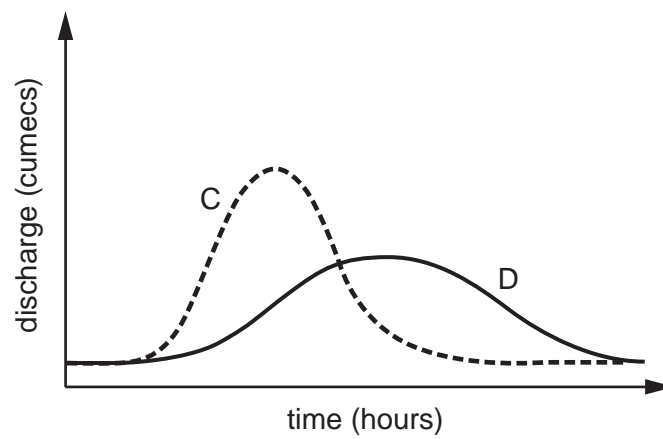


**Fig. 1A and Fig. 1B for Question 1**

**Drainage basin diagrams for two catchments with different drainage densities**

**Fig. 1A**

**Hydrographs for the different drainage densities**

**Fig. 1B**

3

Fig. 2 for Question 2

The three changes in atmospheric moisture

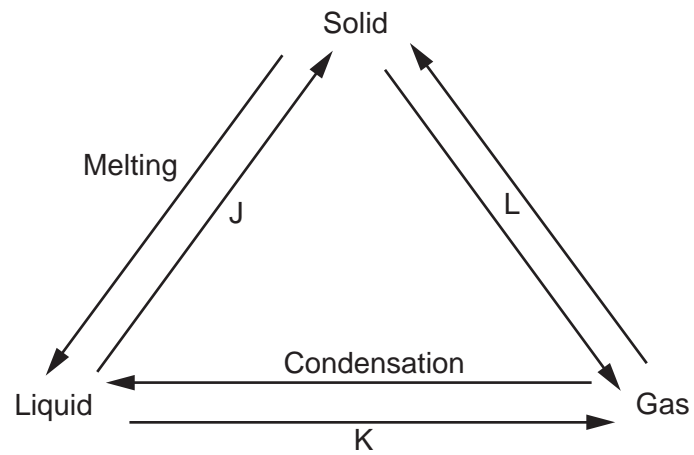
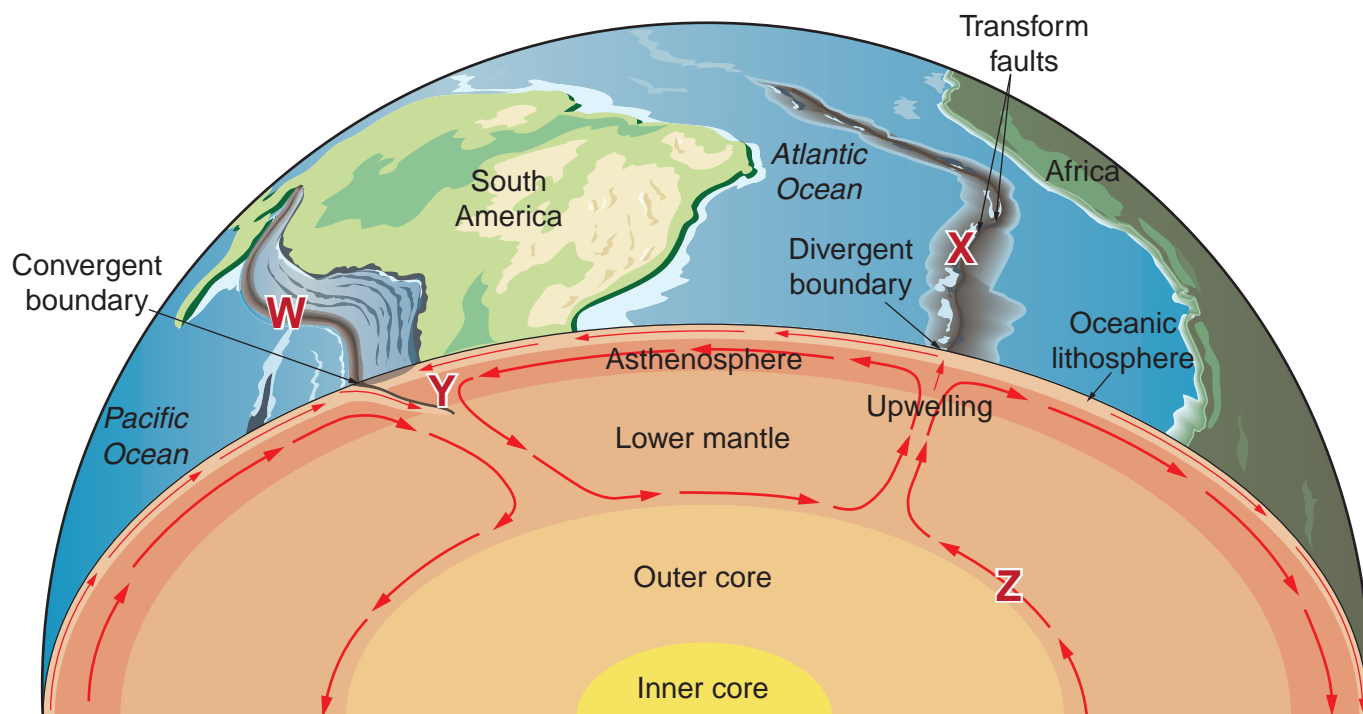


Fig. 3 for Question 3

## Features associated with processes of plate movement



Not to scale

Table 1 for Question 4

**Natural increase (%) and urban population (%) for selected countries in 2011**

country	natural increase (%)	urban population (%)
Mexico	1.4	78
India	1.5	29
Peru	1.5	77
Venezuela	1.6	94
Sierra Leone	2.2	39
Kenya	2.7	18
Tanzania	2.9	27
Chad	2.9	28

6

Fig. 4 for Question 5

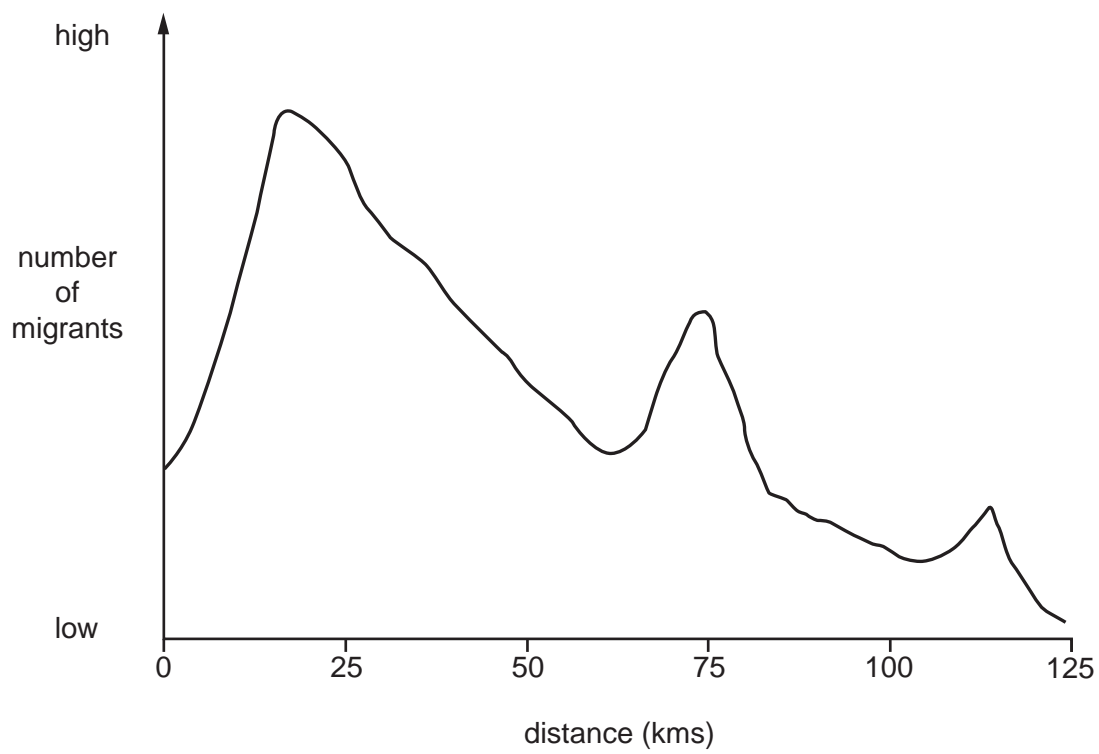
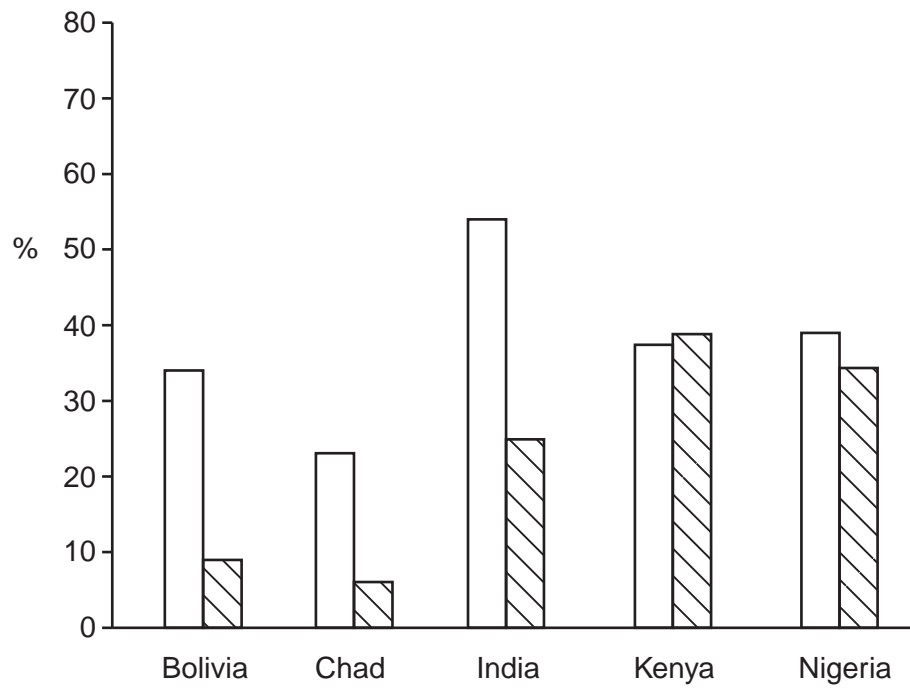
**Destinations, by distance, of migrants from a city in an MEDC**

Fig. 5 for Question 6

Percentage (%) of urban population and rural population with access to improved sanitation in selected countries in 2011

**Key**urban  rural 

**BLANK PAGE**

---

Permission to reproduce items where third-party owned material protected by copyright is included has been sought and cleared where possible. Every reasonable effort has been made by the publisher (UCLES) to trace copyright holders, but if any items requiring clearance have unwittingly been included, the publisher will be pleased to make amends at the earliest possible opportunity.

To avoid the issue of disclosure of answer-related information to candidates, all copyright acknowledgements are reproduced online in the Cambridge International Examinations Copyright Acknowledgements Booklet. This is produced for each series of examinations and is freely available to download at [www.cie.org.uk](http://www.cie.org.uk) after the live examination series.

Cambridge International Examinations is part of the Cambridge Assessment Group. Cambridge Assessment is the brand name of University of Cambridge Local Examinations Syndicate (UCLES), which is itself a department of the University of Cambridge.