



General Certificate of Education
Advanced Level Examination
June 2014

Geography

GEOG3

Unit 3 Contemporary Geographical Issues

Thursday 12 June 2014 9.00 am to 11.30 am

For this paper you must have:

- an AQA 12-page answer book.
- You may use a calculator.

Time allowed

- 2 hours 30 minutes

Instructions

- Use black ink or black ball-point pen. Pencil should only be used for drawing.
- Write the information required on the front of your answer book. The **Paper Reference** is GEOG3.
- Answer **three** options: **one** from each section. In **Section C**, you must **not** answer the same option as those chosen in **Sections A** and **B**.
- Use sketch maps, diagrams and specific examples, where appropriate.
- Do all rough work in your answer book. Cross through any work that you do not want to be marked.

Information

- The marks for questions are shown in brackets.
- The maximum mark for this paper is 90.
- You will be marked on your ability to:
 - use good English
 - organise information clearly
 - use specialist vocabulary where appropriate.

Advice

- You are advised to spend about 45 minutes on each of **Sections A** and **B** and about 60 minutes on **Section C**.

Section A

Answer **one** option from this section.

You must not answer the option that you will answer in Section C.

Option 1 Plate Tectonics and Associated Hazards

Total for this option: 25 marks

0 1

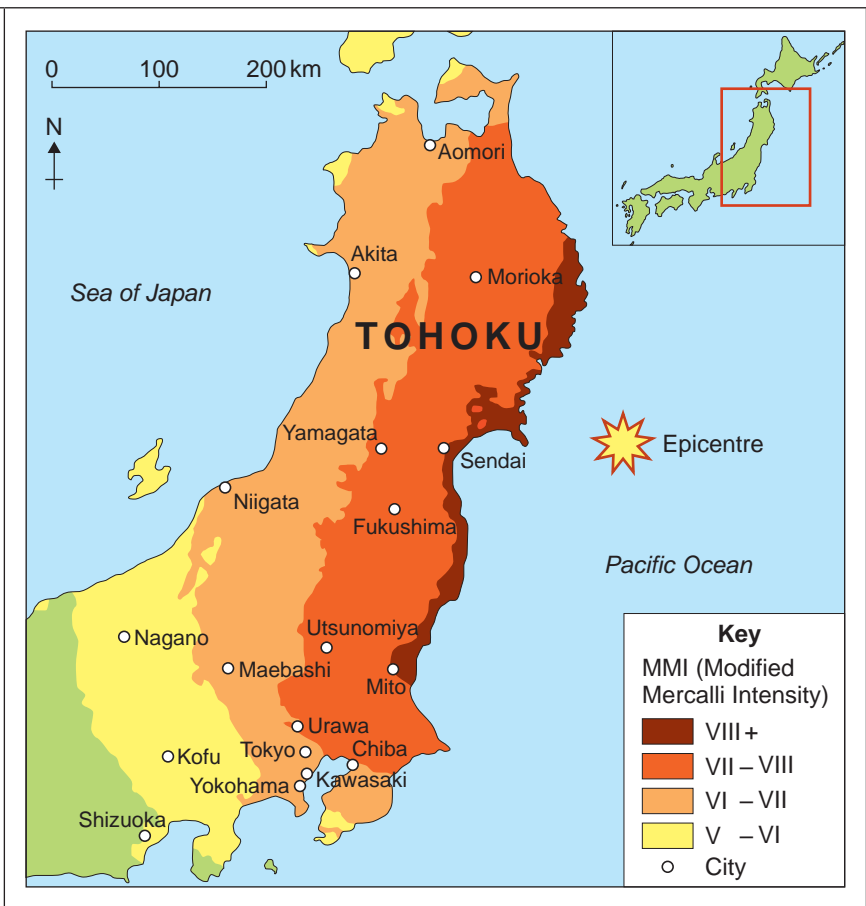
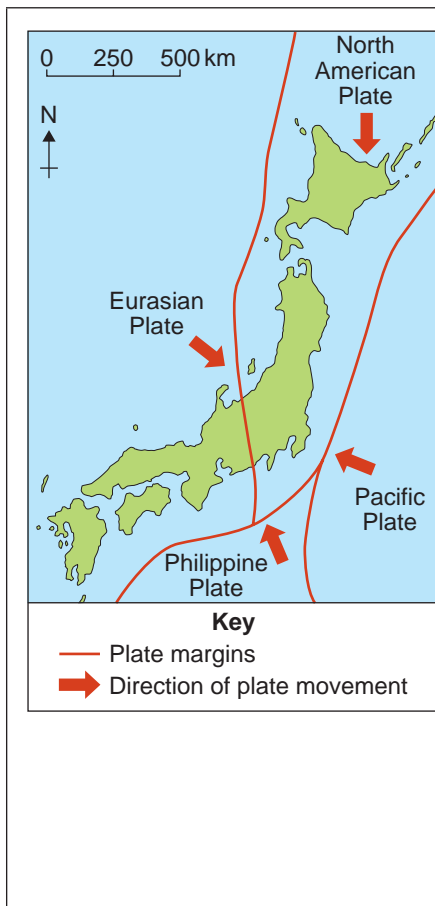
Figures 1a and 1b show information relating to Japan and the Tohoku earthquake, 2011.

Describe the tectonic setting shown in **Figure 1a** and relate the intensity of the Tohoku earthquake shown in **Figure 1b** to that setting.

[7 marks]

Figure 1a

Figure 1b



0 2

Describe the characteristics, and explain the formation, of deep sea trenches and island arcs.

[8 marks]

0 3

Discuss the evidence for tectonic plate movement.

[10 marks]

Option 2 Weather and Climate and Associated Hazards

Total for this option: 25 marks

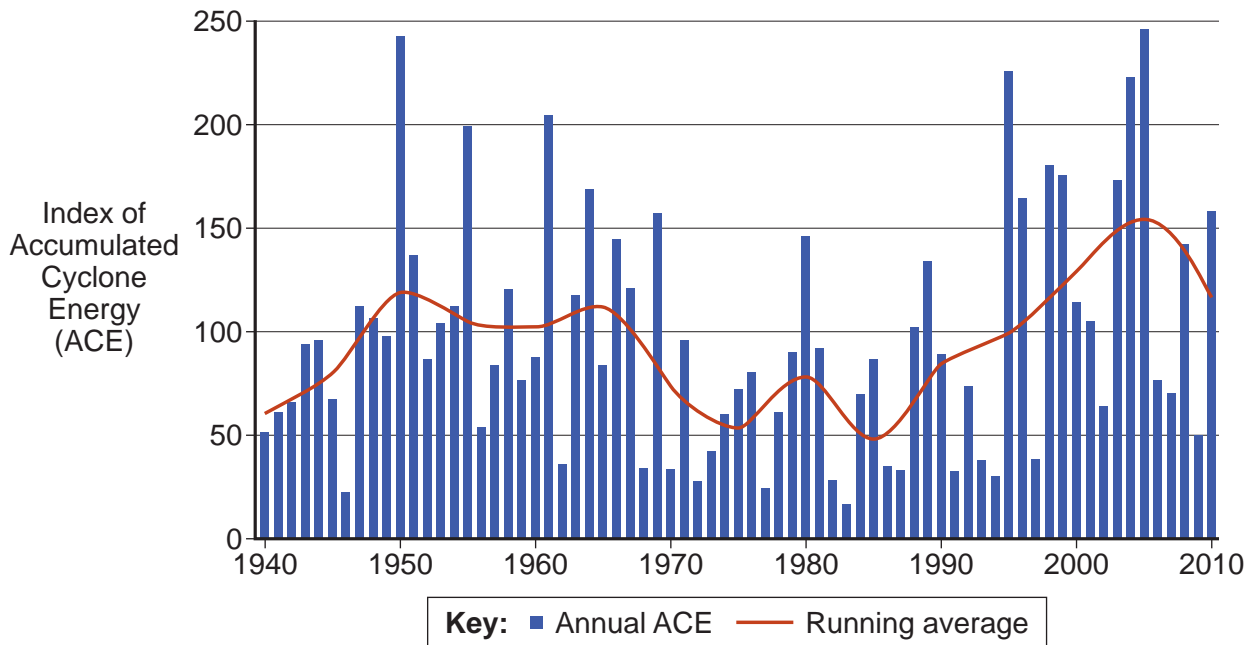
0 4

Figure 2 shows the Accumulated Cyclone Energy (ACE), a measure of the intensity of tropical revolving storms, in the North Atlantic Ocean area between 1940 and 2010.

Describe and comment on the information shown in **Figure 2**.

[7 marks]

Figure 2



0 5

Describe the impact of **one** tropical revolving storm you have studied.

[8 marks]

0 6

Discuss the responses to **one** storm event in the British Isles you have studied.

[10 marks]

Turn over for the next option

Turn over ►

Option 3 Ecosystems: Change and Challenge

Total for this option: 25 marks

0 7

Figure 3 shows a map of Roundhay Park on the north-eastern rural/urban fringe of Leeds, West Yorkshire.

Comment on the activities shown in Figure 3.

[7 marks]

Figure 3



0	8
---	---

Describe the characteristics of **one** ecological conservation area you have studied.

[8 marks]

0	9
---	---

Discuss the impact on ecosystems of the planned and unplanned introduction of new species into urban areas.

[10 marks]

End of Section A

Turn over ►

Section B

Answer **one** option from this section.

You must not answer the option that you will answer in Section C.

Option 4 World Cities

Total for this option: 25 marks

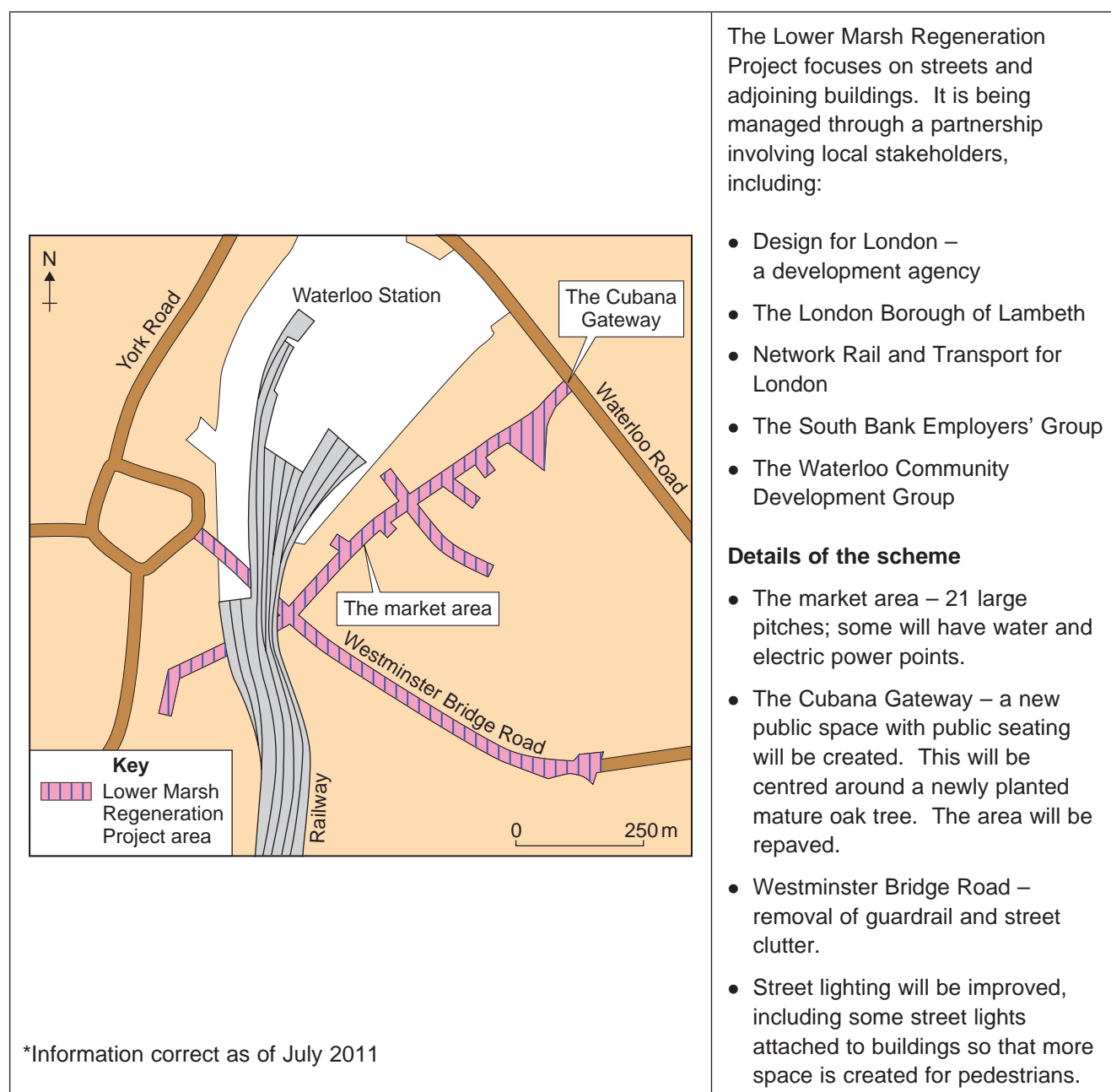
1 0

Figure 4 shows information on the Lower Marsh Regeneration Project in Lambeth, south London.

Comment on the information shown in **Figure 4**.

[7 marks]

Figure 4



1	1
---	---

Describe the characteristics of **one** out of town centre retailing area you have studied.

[8 marks]

1	2
---	---

Assess the success of **either** waste management strategies **or** transport management strategies you have studied.

[10 marks]

Turn over for the next option

Turn over ►

Option 5 Development and Globalisation**Total for this option: 25 marks**

1	3
---	---

Figure 5 shows India's top 10 trading partners in 2009.Describe and comment on the information shown in **Figure 5**.**[7 marks]**

Due to copyright restrictions we are unable to electronically publish Figure 5.

1	4
---	---

 Outline and explain the economic growth that has taken place in China.**[8 marks]**

1	5
---	---

 Referring to examples, discuss the impacts of new markets and new technologies on global economic growth in the 21st century.**[10 marks]**

Option 6 Contemporary Conflicts and Challenges**Total for this option: 25 marks****1 6** **Figure 6** shows an area in a conflict zone.Describe and comment on the area shown in **Figure 6**.**[7 marks]****Figure 6****1 7** Outline and explain the origins of the geographical basis for conflict.**[8 marks]****1 8** Referring to examples, discuss the variety of expressions of conflict.**[10 marks]****End of Section B****Turn over ►**

Section C

Answer **one** option from this section.

You must not answer the option answered in either Section A or Section B.

Note to Candidate

The essay questions below are synoptic. In your response to these questions you are required to show your knowledge and understanding of different aspects of geography, the connections between these different aspects and, where relevant, of human perspectives upon geographical themes and issues.

Option 1 Plate Tectonics and Associated Hazards

1	9
---	---

 'Technology is the best way to reduce the impact of an earthquake.'

To what extent do you agree with this view?

[40 marks]

Option 2 Weather and Climate and Associated Hazards

2	0
---	---

 To what extent is the climate of the British Isles a product of the air masses that affect it?

[40 marks]

Option 3 Ecosystems: Change and Challenge

2	1
---	---

 To what extent is the current vegetation of the British Isles more the outcome of the human activities that influence it than the natural processes that create it?

[40 marks]

Option 4 World Cities

2	2
---	---

 To what extent do cities experience the same problems and rely on similar solutions, wherever they are?

[40 marks]

Option 5 Development and Globalisation

2	3
---	---

 Discuss the role and impacts of transnational corporations in the global economy.

[40 marks]

Option 6 Contemporary Conflicts and Challenges

2	4
---	---

 Discuss the issue: 'No development without security and no security without development'.

[40 marks]

END OF QUESTIONS

There are no questions printed on this page

There are no questions printed on this page

Acknowledgement of copyright-holders and publishers

Permission to reproduce all copyright material has been applied for. In some cases, efforts to contact copyright-holders have been unsuccessful and AQA will be happy to rectify any omissions of acknowledgements in future papers if notified.

Figures 1a & 1b: Geography Review, Vol. 25 No 1 September 2011
Figure 2: © NOAA
Figure 3: Roundhay Park Map © Red Door VR Ltd. Used with permission
Figure 4: © London Borough of Lambeth, Waterloo Business Improvement District
Figure 5: Federal Ministry of Commerce, Government of India
Figure 6: © Brian Steidle, Village of Um Ziefa

Copyright © 2014 AQA and its licensors. All rights reserved.