

Centre Number						Candidate Number				
Surname										
Other Names										
Candidate Signature										



General Certificate of Education
Advanced Subsidiary Examination
June 2012

Geography

GEOG1

Unit 1 Physical and Human Geography

Thursday 24 May 2012 1.30 pm to 3.30 pm

For this paper you must have:

- a pencil
- a rubber
- a ruler.

You may use a calculator.

Time allowed

- 2 hours

Instructions

- Use black ink or black ball-point pen. Use pencil only for drawing.
- Fill in the boxes at the top of this page.
- You must answer the questions in the spaces provided. Do not write outside the box around each page or on blank pages.
- Answer Question 1 and **one other question** from **Section A** and Question 5 and **one other question** from **Section B**.
- Do all rough work in this book. Cross through any work you do not want to be marked.

Information

- The maximum mark for this paper is 120.
- Each question is worth 30 marks.
- The marks for questions are shown in brackets.
- You are expected to use a calculator where appropriate.
- You will be marked on your ability to:
 - use good English
 - organise information clearly
 - use specialist vocabulary where appropriate.

Advice

- Where appropriate, sketch maps and diagrams should be used to illustrate answers and reference made to examples and case studies.
- You are advised to spend about 60 minutes on Section A and about 60 minutes on Section B.

For Examiner's Use	
Examiner's Initials	
Question	Mark
1	
2	
3	
4	
5	
6	
7	
8	
TOTAL	



J U N 1 2 G E O G 1 0 1

H/Jun12/GEOG1

GEOG1

Section A

Answer **Question 1** and **one other question** from this section.

1 Rivers, Floods and Management

1 (a) Describe how a river erodes material from its bed and banks.

.....

.....

.....

.....

.....

.....

(3 marks)

1 (b) (i) Outline the cause(s) of rejuvenation.

.....

.....

.....

.....

(2 marks)



1 (b) (ii) Study **Figure 1** which is a map and a cross section of the valley of the River Wear near Durham.

Figure 1

Due to copyright restrictions we are unable to electronically publish the OS extract.

Describe the incised meander shown in **Figure 1** and explain the formation of this landform.

.....

.....

.....

.....

.....

.....

.....

Question 1 continues on the next page

Turn over ►



.....

.....

.....

.....

.....

(6 marks)

Extra space

.....

.....

.....

.....

.....

1 (c) Study **Figure 2** which is an extract from a news website about the cause of floods in Pakistan in August 2010.

Figure 2

“What all the climate models predict is that the distribution of monsoon rains will become more uneven in the future”, Professor Rajiv Sinha, from the Indian Institute of Technology in Kanpur, told BBC News. “Total rainfall stays the same, but it comes in shorter, more intense bursts.” In August 2010, more than half of the normal monsoon rain fell in only one week. Typically it is spread over three months.

The Indus is choked with sediment eroding off the Himalayas. Building levees causes the river channel to silt up. This has the unexpected effect of making Pakistan’s rivers prone to even bigger floods when the levees eventually break. Deforestation has increased the amount of silt in the channel. Over the past half-century, more sediment has been flushed down the rivers as forests have been cut.



With the help of **Figure 2**, explain why floods occurred in Pakistan in August 2010.

.....

.....

.....

.....

.....

.....

.....

.....

.....

(4 marks)

Extra space

.....

.....

.....

Question 1 continues on the next page

Turn over ►



1 (d)

With reference to **one** case study, discuss the impact of flooding on people and the environment.

Dotted lines for writing the answer.



.....
.....
.....
.....
.....
.....
.....
.....
..... (15 marks)

Extra space
.....
.....
.....
.....
.....
.....
.....
.....
.....
.....
.....
.....
.....
.....
.....
.....
.....
.....
.....
.....

30

Turn over ►



2 Cold Environments

2 (a) Define the term 'permafrost'.

.....

.....

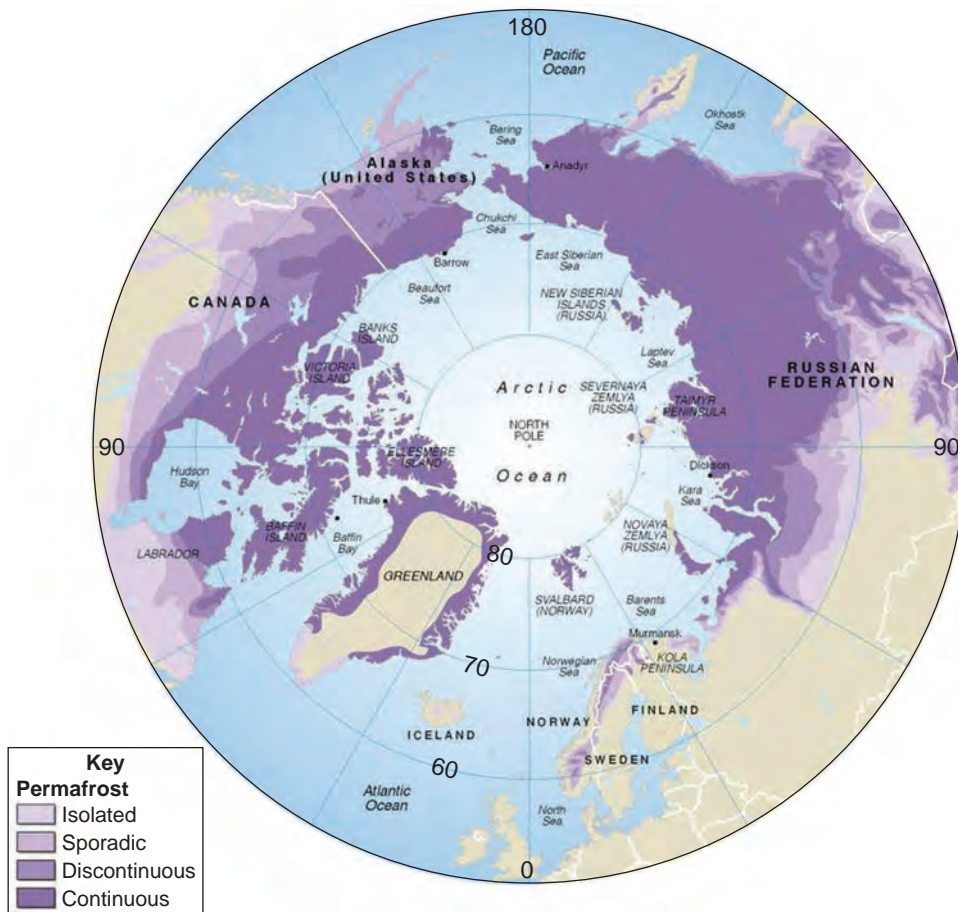
.....

.....

(2 marks)

2 (b) Study Figure 3 which shows the distribution of permafrost in the northern hemisphere.

Figure 3



Describe the distribution of permafrost shown in **Figure 3**.

.....

.....

.....

.....

.....

.....

.....

.....

.....

(4 marks)

Extra space

.....

.....

.....

Question 2 continues on the next page

Turn over ▶



2 (c) Study **Figure 4** which is an advertisement for a holiday in Antarctica.

Figure 4

10 Days Antarctica Discovery



Discover the last untouched continent!

Join us for a voyage on the MS Fram which can carry 400 passengers. Our journey will take us across the Drake Passage, escorted by albatross and petrels, to the magnificent scenery of the Antarctic Peninsula and its abundant summer wildlife of seals, penguins and whales.

To enrich our experience, MS Fram's expert team of expedition staff and lecturers will offer presentations on the history, biology and geology of Antarctica along the way.

Come ashore with our team in sturdy Polar Cirkel boats for a close-up look at penguin colonies, modern research facilities and historic sites. Marvel at the mountainous scenery and icebergs floating by from the comfort of our unique Passenger Bridge.

2 (c) (i) Suggest reasons for the development of tourism in cold environments such as Alaska and Antarctica.

.....

.....

.....

.....

.....

.....

(3 marks)



2 (c) (ii) With the help of **Figure 4**, outline issues regarding the conservation of Antarctica.

.....

.....

.....

.....

.....

.....

.....

.....

.....

.....

.....

.....

.....

.....

.....

.....

.....

.....

(6 marks)

Extra space

.....

.....

.....

.....

.....

.....

.....

Question 2 continues on the next page

Turn over ►



3 Coastal Environments

3 (a) Define the term 'hard engineering'.

.....
.....
.....
.....

(2 marks)

3 (b) Study **Figure 5** which shows hard engineering at Walton-on-the-Naze, Essex.

Figure 5



Describe how the hard engineering shown in **Figure 5** protects the coast.

.....
.....
.....
.....
.....



.....
.....
..... (4 marks)

Extra space
.....
.....
.....

3 (c) (i) Outline reasons why some areas of coastline are protected.

.....
.....
.....
.....
.....
..... (3 marks)

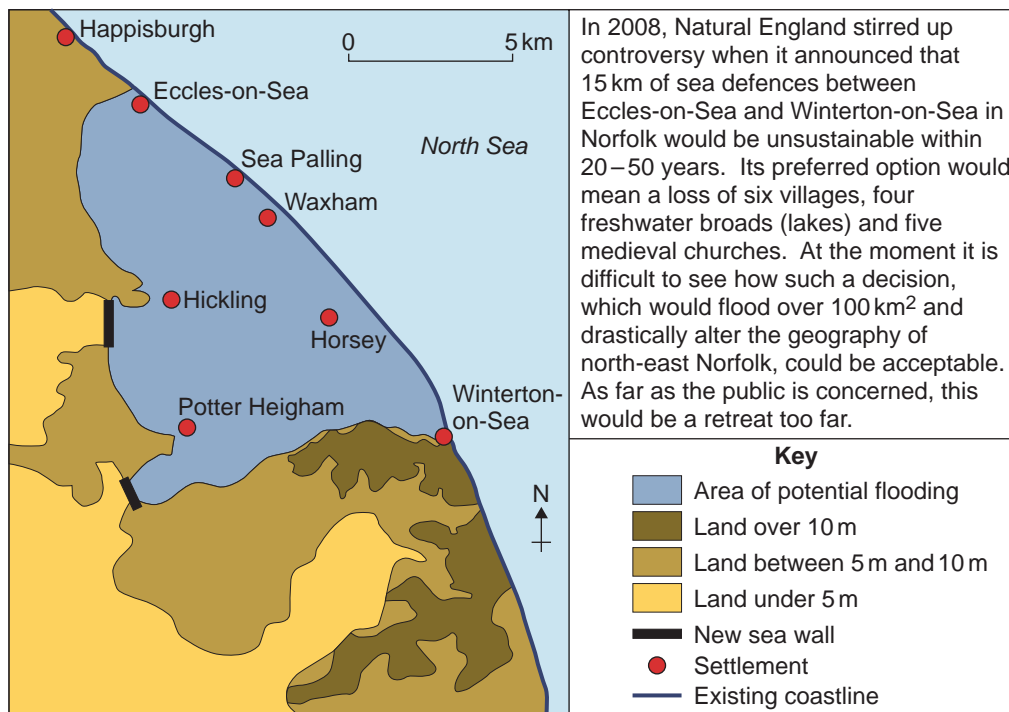
Question 3 continues on the next page

Turn over ►



3 (c) (ii) Study **Figure 6** which shows the possible impact of a proposed coastal management plan for Norfolk.

Figure 6



With the help of **Figure 6**, describe issues likely to result from these proposals.

.....

.....

.....

.....

.....

.....

.....

.....

.....

.....



.....
(6 marks)

Extra space

.....

.....

.....

.....

.....

.....

Question 3 continues on the next page

Turn over ►



.....
.....
.....
.....
.....

(15 marks)

Extra space

.....
.....
.....
.....
.....
.....
.....
.....
.....
.....
.....
.....
.....
.....
.....
.....
.....
.....
.....
.....
.....
.....
.....
.....
.....

30

Turn over ▶



4 Hot Desert Environments and their Margins

4 (a) (i) Define the term 'mechanical weathering'.

.....
.....
.....
.....

(2 marks)

4 (a) (ii) Study **Figure 7** which shows the result of mechanical weathering in Death Valley, California.

Figure 7



Describe evidence of mechanical weathering shown in **Figure 7** and explain the processes involved.

.....
.....
.....
.....
.....
.....



.....
..... (4 marks)

Extra space
.....
.....
.....

4 (b) Explain how continentality is a cause of aridity.

.....
.....
.....
.....
.....
..... (3 marks)

Question 4 continues on the next page

Turn over ►



4 (c) Study **Figure 8** which describes attempts to improve the Badia, an area of hot desert in Jordan.

Figure 8

Much of the open undulating desert land around As Safawi is described as 'rangeland'. It is an area traditionally grazed by the nomadic Bedouin who herded their goats, sheep and camels across the area in search of shrubs to graze on. In recent years, and particularly after the Gulf War in 1991, the area became over-grazed and began to suffer from desertification.

In 2002, in an attempt to resolve the problem, the Tal Rimah Rangeland Rehabilitation Project was initiated. The aim of the project was to work with local communities to identify a sustainable future for grazing in the rangelands. The project involved the following stages:

- The problem was first discussed with local people.
- Over 100 local people built a series of low stone walls.
- Various shrubs were planted in order to identify which ones would be most successful in this extreme environment.
- Horizontal ditches were dug along the contours. This provided the newly planted shrubs with maximum available water to help them to become established.
- Sheep have now been re-introduced to see how the plants respond to grazing. Their manure adds fertility to the soil and they help to disperse the seeds over a larger area.

With the help of **Figure 8**, comment on the potential for sustainability in a desert environment.

.....

.....

.....

.....

.....

.....

.....

.....

.....

.....



.....
.....
.....

(6 marks)

Extra space

.....
.....
.....
.....
.....

Question 4 continues on the next page

Turn over ►



4 (d)

Describe **two or more** landforms resulting from water action in arid and semi-arid areas (such as pediments, inselbergs, mesas and buttes, salt lakes, alluvial fans, wadis and badlands) and explain their formation.

.....

.....

.....

.....

.....

.....

.....

.....

.....

.....

.....

.....

.....

.....

.....

.....

.....

.....

.....

.....

.....

.....

.....

.....

.....

.....

.....



.....

.....

.....

.....

.....

(15 marks)

Extra space

.....

.....

.....

.....

.....

.....

.....

.....

.....

.....

.....

.....

.....

.....

.....

.....

.....

.....

.....

.....

.....

.....

End of Section A

30

Turn over ▶



Section B

Answer **Question 5** and **one other question** from this section.

5 Population Change

5 (a) Distinguish between natural and migration population change.

.....

.....

.....

.....

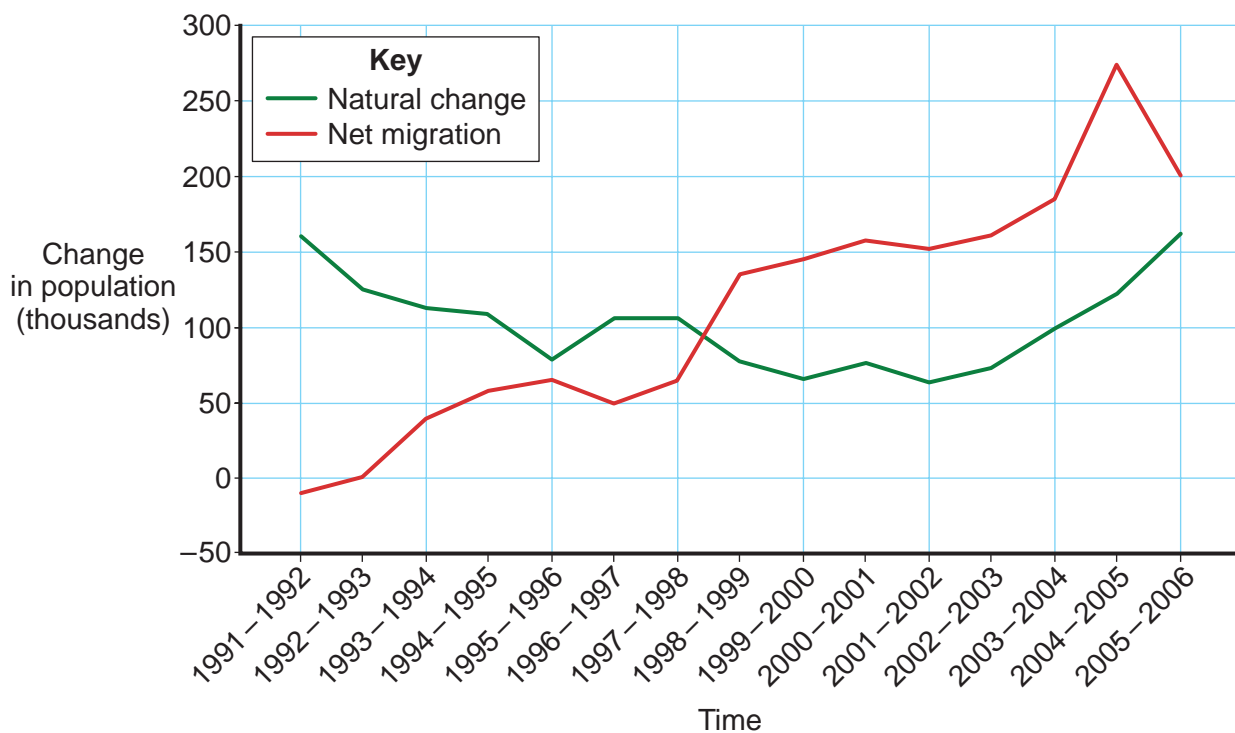
.....

.....

(3 marks)

5 (b) **Figure 9** shows natural population change and net migration in the UK population between 1991 and 2006.

Figure 9



Describe and comment on trends shown in **Figure 9**.

.....

.....

.....

.....

.....

.....

.....

.....

.....

.....

.....

.....

.....

.....

.....

.....

.....

.....

.....

.....

.....

.....

(5 marks)

Extra space

.....

.....

.....

.....

.....

Question 5 continues on the next page

Turn over ▶



5 (c)

With reference to a case study, assess how successful **one** country has been in managing population change.

.....

.....

.....

.....

.....

.....

.....

.....

.....

.....

.....

.....

.....

.....

.....

.....

.....

.....

.....

.....

.....

(7 marks)

Extra space

.....

.....

.....

.....

.....

.....



5 (d)

“An ageing population can bring economic, political and social advantages as well as disadvantages.” Discuss this view.

.....

.....

.....

.....

.....

.....

.....

.....

.....

.....

.....

.....

.....

.....

.....

.....

.....

.....

.....

.....

.....

.....

.....

.....

.....

Question 5 continues on the next page

Turn over ►



.....
.....
.....
.....
.....

(15 marks)

Extra space

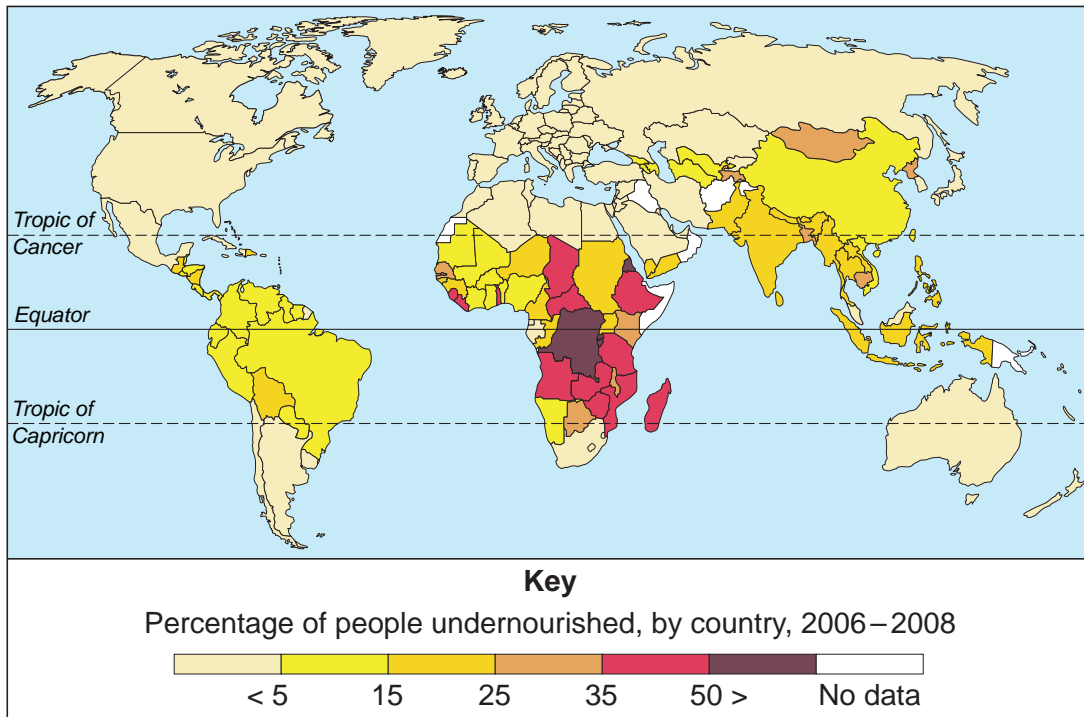
.....
.....
.....
.....
.....
.....
.....
.....
.....
.....
.....
.....
.....
.....
.....
.....
.....
.....
.....
.....
.....
.....
.....
.....
.....
.....
.....
.....
.....
.....
.....



6 Food Supply Issues

6 (a) Study **Figure 10** which shows the percentage of people undernourished, by country, 2006–2008.

Figure 10



Describe the pattern shown in **Figure 10**.

.....

.....

.....

.....

.....

.....

.....

.....

.....

(4 marks)

Question 6 continues on the next page

Turn over ►



Extra space

.....

.....

.....

6 (b) Explain how land colonisation can lead to an increase in food supply.

.....

.....

.....

.....

.....

.....

.....

.....

.....

.....

.....

.....

.....

.....

.....

.....

.....

.....

.....

.....

.....

.....

(5 marks)

Extra space

.....

.....

.....

.....

.....



6 (c) Study **Figure 11** which is an extract from a geographical periodical about local sourcing of foodstuffs.

Figure 11

Moorland Farm in Somerset is a family-run farm raising beef cattle. It differs from other beef farms in that all the beef it produces is sold either through a small farm shop on the farm itself, or at a number of farmers' markets in the local area (for example, in Bristol).

Farmers' markets have become much more common in the UK over the past decade. The first one opened in Bath in 1997 and there are now several thousand operating in the UK. The principles of the farmers' market are that all the food for sale must have been produced within a certain radius of the market (usually 50 km),

and that it must be sold by the farmer or grower themselves, or one of their family members or employees. There is a joint emphasis then on the localness of the food and the reconnection achieved by consumers buying food directly from the people who produce it.

At Moorland Farm, the farmers had struggled to maintain an economically viable business in the mid-1990s, as the prices they received for their beef from supermarket buyers were too low. In order to survive they decided to withdraw completely from selling beef to supermarket retailers.

Using **Figure 11**, explain advantages of local sourcing of foodstuffs.

.....
.....
.....
.....
.....
.....
.....
.....
.....
.....
.....
.....
.....
.....
.....
.....

(6 marks)

Turn over ►



Extra space

.....

.....

.....

.....

6 (d) Evaluate the role of European Union strategies in managing food supply.

.....

.....

.....

.....

.....

.....

.....

.....

.....

.....

.....

.....

.....

.....

.....

.....

.....

.....

.....

.....



.....
.....
.....
.....
.....
.....
.....
.....
.....
.....
.....
.....
.....
.....
.....
.....

(15 marks)

Extra space

.....
.....
.....
.....
.....
.....
.....
.....
.....
.....
.....
.....
.....
.....
.....
.....
.....
.....
.....
.....
.....
.....

Question 6 continues on the next page

Turn over ▶



.....

.....

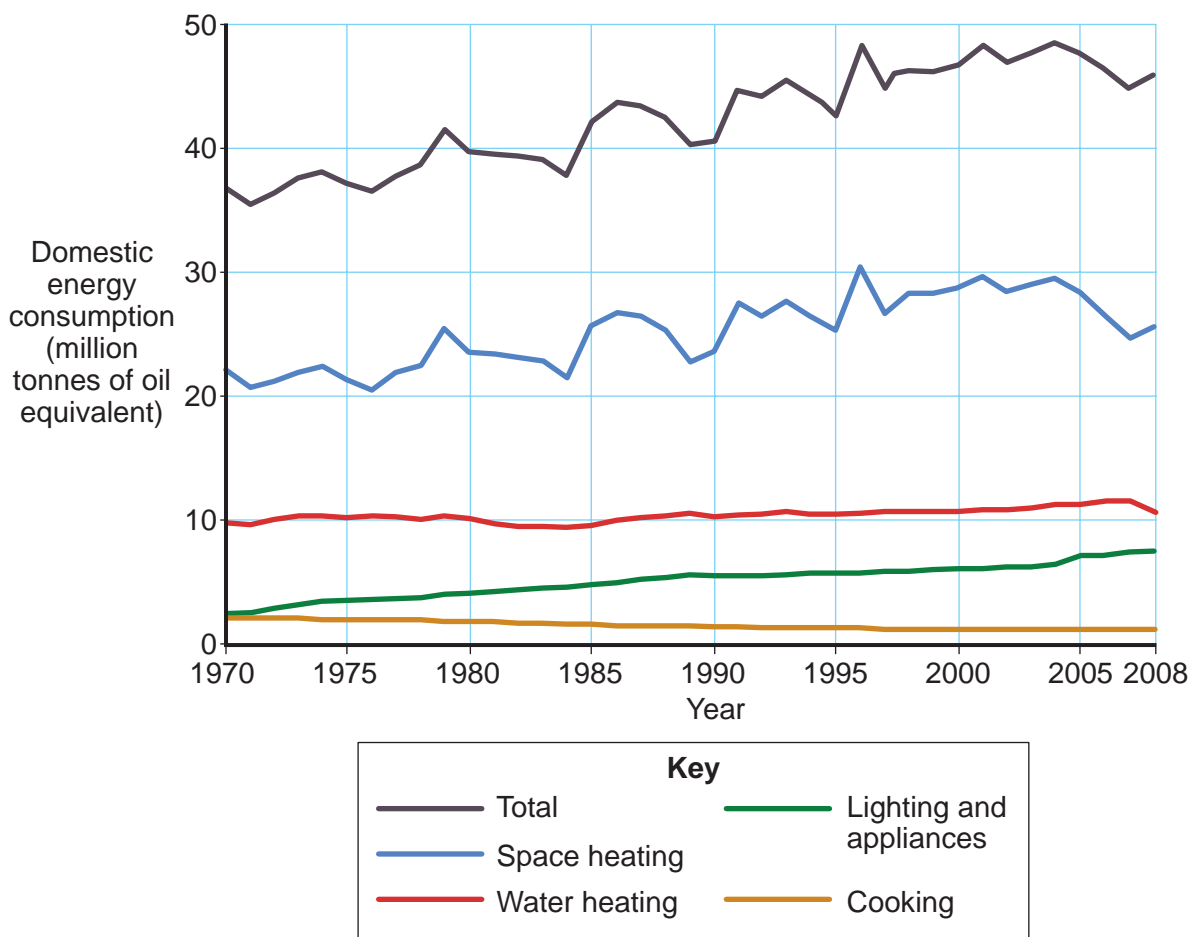
.....

.....

7 Energy Issues

7 (a) Study **Figure 12** which shows domestic energy consumption in the UK from 1970 to 2008.

Figure 12



Describe the trends shown in **Figure 12**.

.....

.....

.....

.....

.....

.....

.....

.....

.....

(4 marks)

Extra space

.....

.....

.....

7 (b) Explain how attempts have been made to reduce energy consumption in workplaces.

.....

.....

.....

.....

.....

.....

.....

.....

.....

.....

Question 7 continues on the next page

Turn over ►



..... (5 marks)

Extra space

7 (c) Study Figure 13 which is an extract from a newspaper about an oil spill in the Gulf of Mexico in 2010.

Figure 13

<p>Was it the world's worst pollution disaster? You can make a pretty good case that it was. Now BP's Deepwater Horizon oil spill appears to have been finally shut down after 87 days of pouring Louisiana crude into the waters of the Gulf of Mexico in an unremitting torrent.</p>	<p>less than first feared, especially on oiled seabirds. The total number of oiled birds picked up over the three months, alive and dead, was 1997.</p>
<p>Drilling at a depth of about 1500 m, Deepwater Horizon, depending on the estimate, has released more than 2.2 million barrels, and possibly as much as 5.3 million.</p>	<p>There are several possible reasons for the comparatively low number of affected birds. Much of the slick is still offshore, many more oiled birds may have died out at sea and not been collected, and rescuers are reluctant to chase oiled birds into breeding colonies.</p>
<p>Environmentally the fears are enormous, but the effects are hard to judge accurately. The ruptured well began gushing on 20 April, which was in the early stages of the breeding season for Gulf wildlife, and there was instant concern for a range of creatures, ranging from bluefin tuna and green turtles to the brown pelican, the state bird of Louisiana.</p>	<p>But it may also be the case that the gigantic BP funded clean-up operation has protected them and much of the Gulf coast. The scale of this is quite staggering and appears to exceed any previous environmental control venture. Nearly 7000 ships and boats and 119 aircraft are involved, almost 2000 miles of protective booms have been deployed and there are 44 000 personnel on active duty.</p>
<p>Three months on the effects are</p>	



With reference to **Figure 13**, comment on the environmental impact of extracting oil.

.....

.....

.....

.....

.....

.....

.....

.....

.....

.....

.....

.....

.....

.....

.....

(6 marks)

Extra space

.....

.....

.....

.....

Question 7 continues on the next page

Turn over ▶



(15 marks)

Extra space

30

Turn over ▶



8 Health Issues

8 (a) Study **Figure 14** which shows information on health provision in the UK and the USA.

Figure 14

Indicator	UK	USA
Gross national income per capita (\$)	33 650	44 070
Government expenditure on health as percentage of total expenditure on health	87.4%	45.8%
Government expenditure on health as percentage of total government expenditure	16.5%	19.1%
Per capita government expenditure on health (\$)	2434	3074
Per capita total expenditure on health (\$)	2784	6714
Doctors per 10 000 population	23	26

Describe contrasts between the UK and the USA shown in **Figure 14**.

.....

.....

.....

.....

.....

.....

.....

.....

.....

(4 marks)



Extra space

.....

.....

.....

.....

8 (b) For **one** country you have studied, describe its approach to healthcare.

.....

.....

.....

.....

.....

.....

.....

.....

.....

.....

.....

.....

.....

.....

.....

.....

.....

.....

.....

.....

.....

.....

.....

(5 marks)

Extra space

.....

.....

.....

.....

Question 8 continues on the next page

Turn over ►



- 8 (c) Study **Figure 15** which is an extract from the website of a pharmaceutical transnational corporation.

Figure 15

Our mission is to improve the quality of human life by enabling people to do more, feel better and live longer.

We are a research-based pharmaceutical company.

We are committed to tackling the three “priority” diseases identified by the World Health Organization: HIV / AIDS, tuberculosis and malaria.

Our vaccines are included in immunisation campaigns in many countries worldwide.

We delivered 1.4 billion vaccine doses to 179 countries in 2010, of which the majority were used in developing countries.

In November 2009 we launched a subsidiary company, a global specialist HIV company to deliver advances in treatment and care for people living with HIV.

In 2007 we marked 15 years of the Positive Action programme that helps communities living with HIV / AIDS.

In the developing world we provide certain medicines at preferential prices ensuring that the poorest can still benefit from our treatments and vaccines.

Using **Figure 15**, comment on the role of pharmaceutical transnational corporations in influencing world health.

.....

.....

.....

.....

.....

.....

.....

.....

.....

.....

.....

.....

.....

.....

.....

(6 marks)



Extra space

.....

.....

.....

.....

8 (d) "An infectious disease has a greater impact on economic development than a non-communicable disease." To what extent do you agree with this view?

.....

.....

.....

.....

.....

.....

.....

.....

.....

.....

.....

.....

.....

.....

.....

.....

.....

.....

.....

.....

.....

.....

.....

Question 8 continues on the next page

Turn over ▶



.....

.....

.....

.....

.....

.....

.....

.....

.....

.....

.....

.....

.....

.....

.....

.....

(15 marks)

Extra space

.....

.....

.....

.....

.....

.....

.....

.....

.....

.....

.....

.....

.....

.....

.....

END OF QUESTIONS

30



There are no questions printed on this page

**DO NOT WRITE ON THIS PAGE
ANSWER IN THE SPACES PROVIDED**



There are no questions printed on this page

ACKNOWLEDGEMENT OF COPYRIGHT-HOLDERS AND PUBLISHERS

Permission to reproduce all copyright material has been applied for. In some cases, efforts to contact copyright-holders have been unsuccessful and AQA will be happy to rectify any omissions of acknowledgements in future papers if notified.

- Figure 1: Map reproduced by permission of Ordnance Survey on behalf of HMSO. © Crown copyright 2011. All rights reserved. Ordnance Survey Licence number 100041328
- Figure 2: www.bbc.co.uk (BBC News)
- Figure 3: *Geography Review*, Volume 23, Issue 4, April 2010, Reproduced by permission of Philip Allan Updates
- Figure 4: www.hurtigruten.co.uk
- Figure 5: www.geograph.org.uk Image © Nigel Cox under the Creative Commons Licence
- Figure 6: Reproduced by permission of Cross Academe Limited
- Figure 7: Arid environments, Lucy Cole, 2010, Philip Allan Updates
- Figure 8: Adapted with the permission of Nelson Thornes LTD from *GeoActive Online*: Series 20, Issue 418, Simon Ross, first published in 2009
- Figure 9: *Geography Review*, Volume 22, Issue 1, September 2008, Reproduced by permission of Philip Allan Updates
- Figure 10: Food and Agriculture Organization of the United Nations, *Prevalence of Undernourishment in Total Population (%)*
- Figure 11: 'Moorland Farm', *Geography Review*, Volume 22, Issue 2, November 2008, Reproduced by permission of Philip Allan Updates
- Figure 12: Contains Public Sector information from the Office for National Statistics licensed under the Open Government Licence V1.0
Graph from www.decc.gov.uk
Additional data from: The Times 3 July 2010 (source ONS)
- Figure 13: 'The oil disaster' by Michael McCarthy, © *The Independent*, 17 July 2010
- Figure 14: *Geography Review*, Volume 23, Issue 2, November 2009, Reproduced by permission of Philip Allan Updates
- Figure 15: GlaxoSmithKline, *GSK at a glance*, March 2011

Copyright © 2012 AQA and its licensors. All rights reserved.

