



Cambridge International AS & A Level

CANDIDATE
NAME

CENTRE
NUMBER

--	--	--	--	--

CANDIDATE
NUMBER

--	--	--	--

CHEMISTRY

9701/42

Paper 4 A Level Structured Questions

May/June 2022

2 hours

You must answer on the question paper.

No additional materials are needed.

INSTRUCTIONS

- Answer **all** questions.
- Use a black or dark blue pen. You may use an HB pencil for any diagrams or graphs.
- Write your name, centre number and candidate number in the boxes at the top of the page.
- Write your answer to each question in the space provided.
- Do **not** use an erasable pen or correction fluid.
- Do **not** write on any bar codes.
- You may use a calculator.
- You should show all your working and use appropriate units.

INFORMATION

- The total mark for this paper is 100.
- The number of marks for each question or part question is shown in brackets [].
- The Periodic Table is printed in the question paper.
- Important values, constants and standards are printed in the question paper.

This document has **24** pages. Any blank pages are indicated.



Answer **all** the questions in the spaces provided.

- 1 (a) The solubility of the Group 2 hydroxides increases down the group.

Explain this trend.

.....

.....

.....

.....

..... [3]

- (b) The solubility of $\text{Be}(\text{OH})_2$ in water is $2.40 \times 10^{-6} \text{ g dm}^{-3}$ at 298 K.

- (i) Write an expression for the solubility product, K_{sp} , of $\text{Be}(\text{OH})_2$ and state its units.

$K_{\text{sp}} =$

units = [2]

- (ii) Calculate the numerical value of K_{sp} for $\text{Be}(\text{OH})_2$ at 298 K.

$K_{\text{sp}} =$ [2]

- (c) $\text{Be}(\text{OH})_2$ is soluble in aqueous solutions containing an excess of hydroxide ions and forms the complex ion $[\text{Be}(\text{OH})_4]^{2-}$. This complex ion has a similar shape to that of $[\text{CuCl}_4]^{2-}$.

- (i) Define the term complex ion.

.....

..... [1]

- (ii) Draw a three-dimensional diagram to show the structure of the complex ion $[\text{Be}(\text{OH})_4]^{2-}$. Name the shape of the $[\text{Be}(\text{OH})_4]^{2-}$ complex ion.

shape [1]

- (d) (i) Explain why transition elements can form complex ions.

.....
 [1]

- (ii) Complete Table 1.1 to show the coordination number of each metal ion, and the shapes and overall polarities of the complex ions listed.

Table 1.1

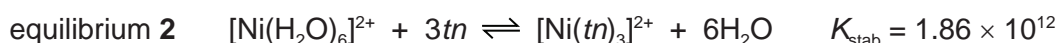
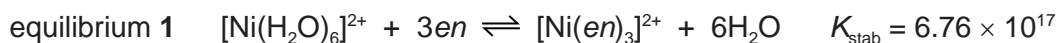
complex ion	shape	coordination number	polar or non-polar
<i>cis</i> -[Pt(H ₂ NCH ₂ CH ₂ NH ₂)Cl ₂]	square planar		
[Ag(NH ₃) ₂] ⁺			non-polar
[Fe(C ₂ O ₄) ₃] ³⁻		6	

[2]

- (e) (i) Define stability constant, K_{stab} .

.....
 [1]

- (ii) Nickel can form complexes with the ligands *en*, H₂NCH₂CH₂NH₂, and *tn*, H₂NCH₂CH₂CH₂NH₂, as shown.



Construct an expression for the stability constant, K_{stab} , for equilibrium 1.
 State the units for K_{stab} .

$$K_{\text{stab}} =$$

units =
 [2]

- (iii) Describe what the K_{stab} values indicate about the position of equilibrium for equilibrium 1 and 2. Use the K_{stab} values to deduce which complex, $[\text{Ni}(\text{en})_3]^{2+}$ or $[\text{Ni}(\text{tn})_3]^{2+}$, is more stable.

.....
 [1]

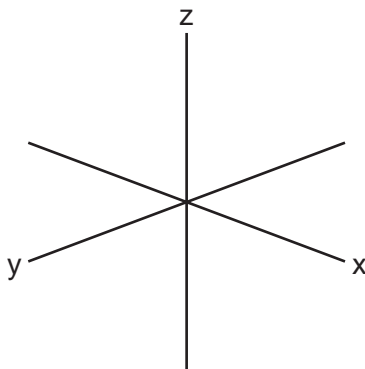
[Total: 16]

4

2 (a) Explain why transition elements have variable oxidation states.

.....
..... [1]

(b) Sketch the shape of a $3d_{xy}$ orbital.



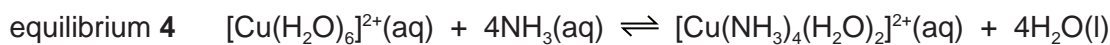
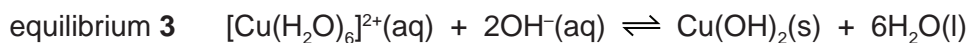
[1]

(c) Explain why transition elements form coloured compounds.

.....
.....
.....
.....
.....
..... [3]

(d) Aqueous solutions of copper(II) salts contain $[\text{Cu}(\text{H}_2\text{O})_6]^{2+}$ ions.

Equilibrium 3 and equilibrium 4 show two reactions of these ions.



(i) State the colour of $\text{Cu}(\text{OH})_2(\text{s})$ and $[\text{Cu}(\text{NH}_3)_4(\text{H}_2\text{O})_2]^{2+}(\text{aq})$.

colour of $\text{Cu}(\text{OH})_2(\text{s})$

colour of $[\text{Cu}(\text{NH}_3)_4(\text{H}_2\text{O})_2]^{2+}(\text{aq})$

[1]

(ii) Use Le Chatelier's principle to explain why a precipitate is formed when $\text{NaOH}(\text{aq})$ is added dropwise to $[\text{Cu}(\text{H}_2\text{O})_6]^{2+}(\text{aq})$.

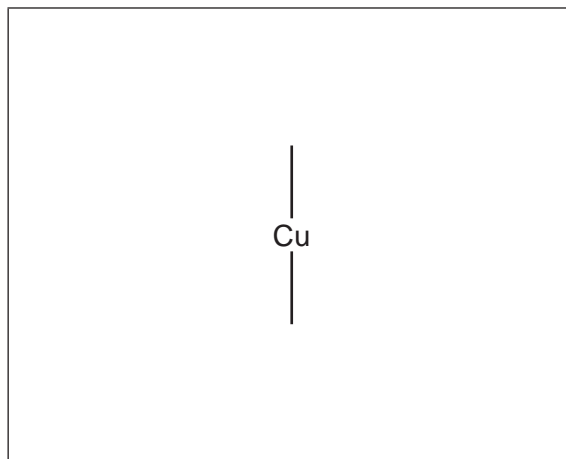
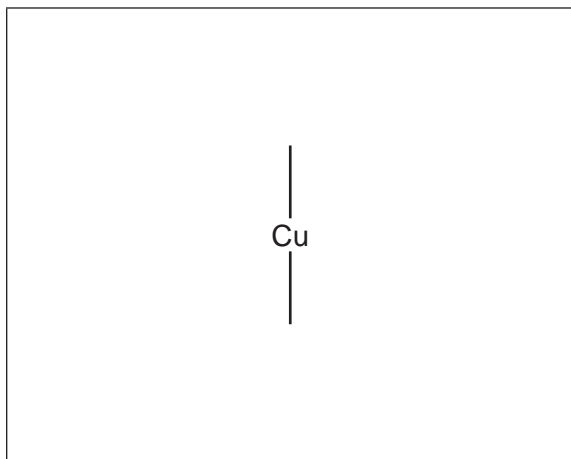
.....

.....

..... [1]

(e) There are two possible stereoisomers with the formula $[\text{Cu}(\text{NH}_3)_4(\text{H}_2\text{O})_2]^{2+}$.

Draw three-dimensional diagrams to show the two stereoisomers.



[2]

[Total: 9]

3 (a) (i) Define first electron affinity.

.....

 [2]

(ii) The first electron affinity of an atom is usually an exothermic process, whereas the second electron affinity is an endothermic process.

Suggest why.

.....
 [1]

(iii) Describe the general trend in first electron affinities for Cl, Br and I. Explain your answer.

.....

 [2]

(b) Table 3.1 shows energy changes to be used in this question and in (c).

Table 3.1

energy change	value/kJ mol ⁻¹
standard enthalpy change of atomisation of zinc	+131
first ionisation energy of zinc	+906
second ionisation energy of zinc	+1733
standard enthalpy change of formation of ZnI ₂ (s)	-208
lattice energy, $\Delta H_{\text{latt}}^{\circ}$, of zinc iodide, ZnI ₂ (s)	-2605
first ionisation energy of iodine	+1008
second ionisation energy of iodine	+1846
I-I bond energy	+151
enthalpy change of sublimation of iodine, I ₂ (s) → I ₂ (g)	+62

7

Calculate the first electron affinity for iodine. Use relevant data from Table 3.1 in your working. It may be helpful to draw a labelled energy cycle. Show all working.

first electron affinity for iodine = kJ mol^{-1} [3]

- (c) Predict how $\Delta H_{\text{latt}}^{\ominus}$ of $\text{CdI}_2(\text{s})$ differs from $\Delta H_{\text{latt}}^{\ominus}$ of $\text{ZnI}_2(\text{s})$. Place a tick (✓) in the appropriate box in Table 3.2.

Table 3.2

$\Delta H_{\text{latt}}^{\ominus}$ of $\text{CdI}_2(\text{s})$ is less negative than $\Delta H_{\text{latt}}^{\ominus}$ of $\text{ZnI}_2(\text{s})$	$\Delta H_{\text{latt}}^{\ominus}$ of $\text{CdI}_2(\text{s})$ is the same as $\Delta H_{\text{latt}}^{\ominus}$ of $\text{ZnI}_2(\text{s})$	$\Delta H_{\text{latt}}^{\ominus}$ of $\text{CdI}_2(\text{s})$ is more negative than $\Delta H_{\text{latt}}^{\ominus}$ of $\text{ZnI}_2(\text{s})$

Explain your answer.

.....
 [1]

[Total: 9]

- 4 (a) Calcium carbonate decomposes on heating.



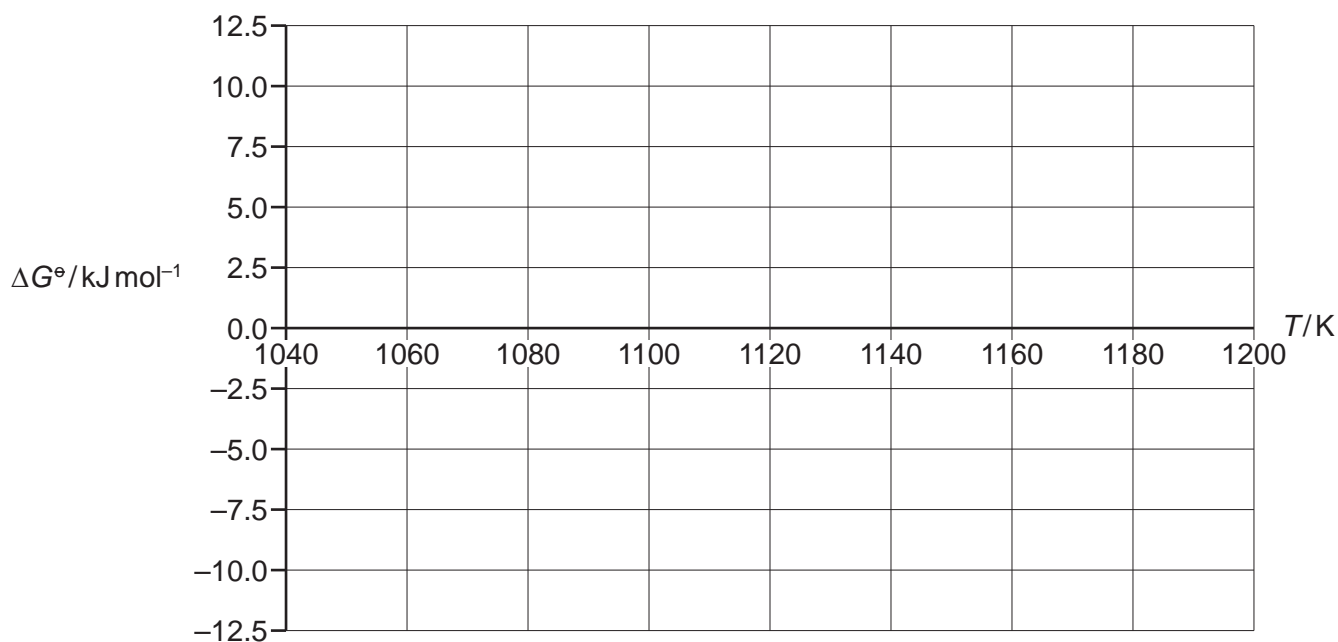
Table 4.1 shows the values of the Gibbs free energy change, ΔG^\ominus , for this reaction at various temperatures.

Table 4.1

T/K	$\Delta G^\ominus/\text{kJ mol}^{-1}$
1050	9.9
1085	4.3
1120	-1.3
1148	-5.8
1176	-10.3

Assume the standard enthalpy change, ΔH^\ominus , and the standard entropy change, ΔS^\ominus , for this reaction remain constant over this temperature range.

- (i) Use the data in Table 4.1 to plot a graph of ΔG^\ominus against T on the grid.



[2]

- (ii) Calculate the gradient of your graph. Determine the ΔS^\ominus in $\text{JK}^{-1} \text{mol}^{-1}$ for this reaction. Show all working.

$$\Delta S^\ominus = \dots\dots\dots \text{JK}^{-1} \text{mol}^{-1} \quad [2]$$

(b) Group 1 hydrogencarbonates, MHCO_3 , decompose on gentle heating to give the corresponding metal carbonate, carbon dioxide and water vapour.

(i) Write an ionic equation for the decomposition of the hydrogencarbonate ion.

..... [1]

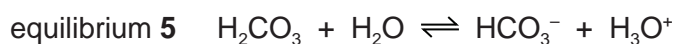
(ii) The thermal stability of Group 1 hydrogencarbonates increases down the group.

Suggest an explanation for the trend in thermal stability of the Group 1 hydrogencarbonates.

.....

 [2]

(c) The buffer system in seawater contains a mixture of HCO_3^- and H_2CO_3 .



(i) Define a buffer solution.

.....

 [2]

(ii) Construct **two** equations to show how equilibrium 5 acts as a buffer solution.

.....
 [2]

(iii) The $[\text{HCO}_3^-]/[\text{H}_2\text{CO}_3]$ ratio in a sample of seawater is 14.1.

Calculate the pH of this sample.

$[\text{p}K_a: \text{H}_2\text{CO}_3, 6.35]$

pH = [3]

[Total: 14]

- 5 (a) Complete Table 5.1 to predict the substance liberated at each electrode during electrolysis of the indicated electrolyte with inert electrodes.

Table 5.1

electrolyte	substance liberated at the anode	substance liberated at the cathode
$\text{PbBr}_2(\text{l})$		
concentrated $\text{NaCl}(\text{aq})$		
$\text{Cu}(\text{NO}_3)_2(\text{aq})$		

[3]

- (b) An electrolytic cell is set up to determine a value for the Avogadro constant, L . The electrolyte is dilute sulfuric acid and both electrodes are copper.

When a current of 0.600A is passed through the acid for 30.0 minutes, the anode decreases in mass by 0.350g.

- (i) State the relationship between the Faraday constant, F , and the Avogadro constant, L .

..... [1]

- (ii) Use the experimental information in (b) and data from the table on page 23 to calculate a value for the Avogadro constant, L .

Show all working.

Avogadro constant, $L =$ [4]

[Total: 8]

- 6 (a) The reagent and conditions required for the nitration of benzene, benzoic acid and phenol are shown in Table 6.1.

Table 6.1

compound	reagents and conditions for nitration
benzene	concentrated HNO_3 , 50°C , concentrated H_2SO_4 catalyst
benzoic acid	concentrated HNO_3 , 100°C , concentrated H_2SO_4 catalyst
phenol	dilute $\text{HNO}_3(\text{aq})$, 20°C

Concentrated HNO_3 reacts with concentrated H_2SO_4 to generate the electrophile NO_2^+ .

- (i) Complete Fig. 6.1 to show the mechanism of the reaction between benzene and NO_2^+ . Include all relevant curly arrows and charges.

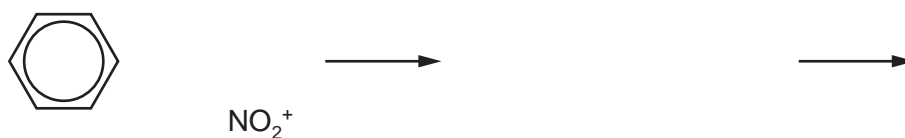


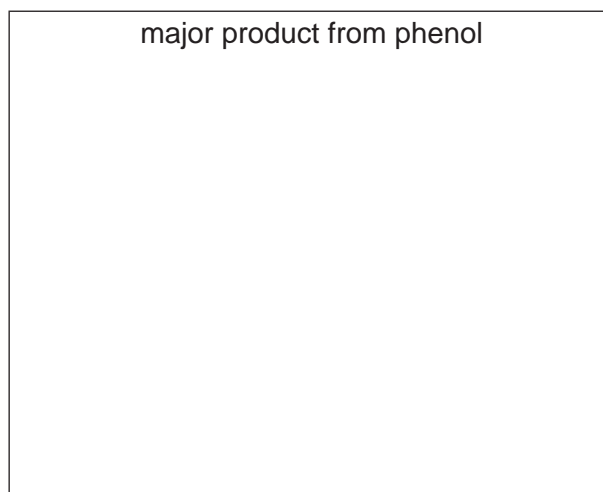
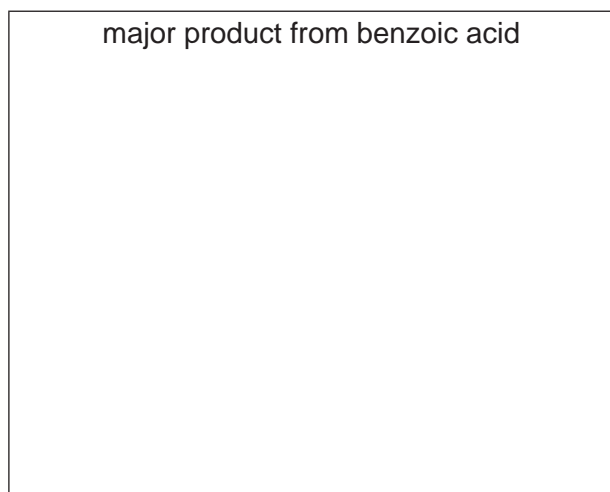
Fig. 6.1

[3]

- (ii) Write an equation to show how H_2SO_4 is regenerated.

..... [1]

- (b) Draw the major products from the mononitration of benzoic acid and of phenol.



[2]

- (c) Compare the relative ease of nitration of benzene, benzoic acid and phenol. Explain your reasoning; include reference to the structures of the three compounds in your answer.

..... > >

easiest least easy

.....

.....

.....

.....

.....

[4]

- (d) The azo compound Congo Red is used as an acid–base indicator and can be made by the route shown in Fig. 6.2.

In step 3 of this synthesis, compound **Y** reacts with compound **Z**. Compound **Z** is made from compound **X**. Assume that the $-\text{SO}_3^-\text{Na}^+$ groups do not react.

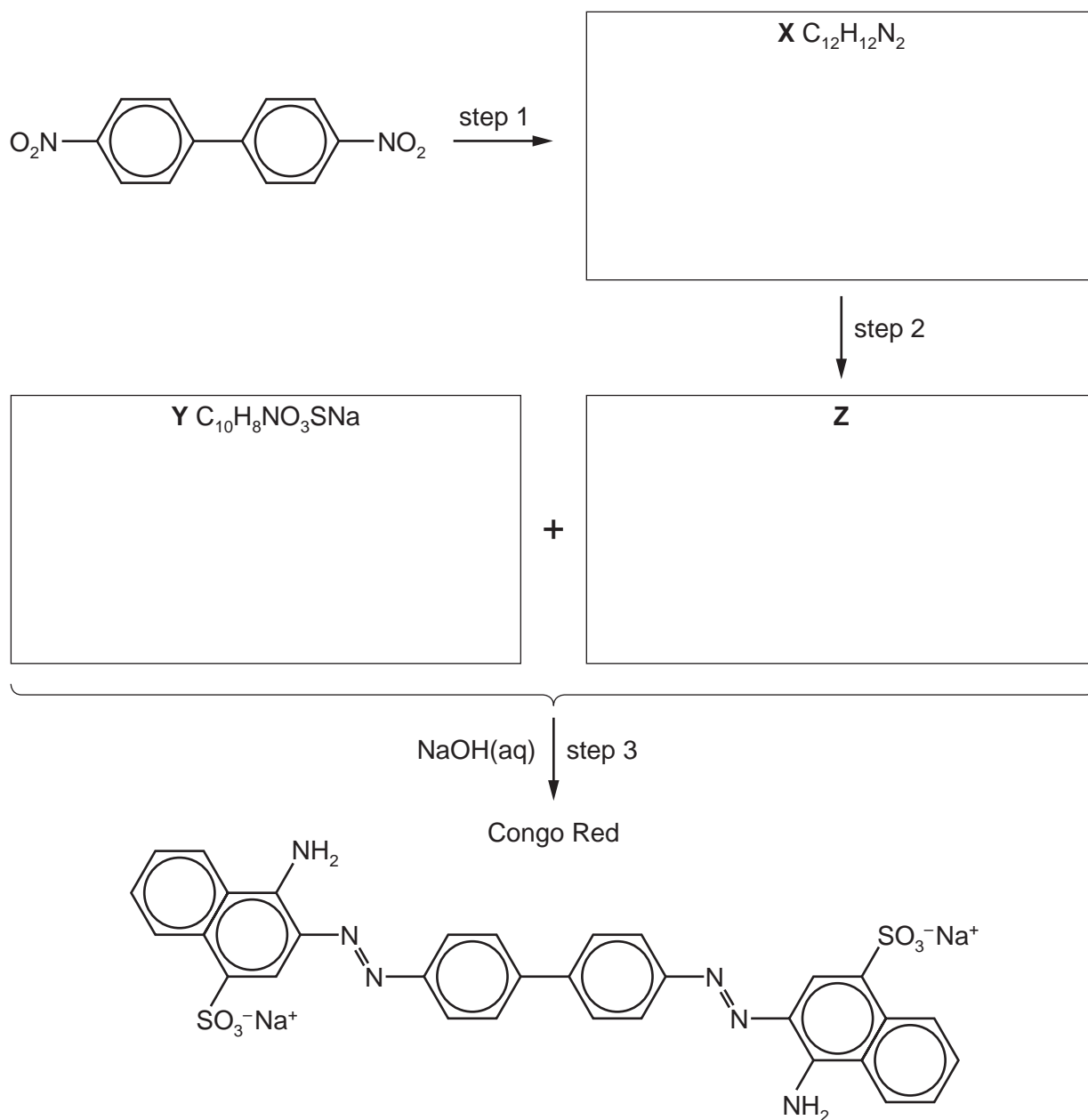


Fig. 6.2

- (i) Suggest structures for compounds **X**, **Y** and **Z** and draw them in the boxes in Fig. 6.2. [3]
- (ii) Give the reagents and conditions for step 1 and step 2.

step 1

step 2

[3]

[Total: 16]

7 (a) State the uses of TMS and D₂O in NMR spectroscopy.

TMS

D₂O

[1]

(b) The three isomeric ketones with molecular formula C₅H₁₀O are:

- pentan-2-one
- pentan-3-one
- 3-methylbutanone.

(i) Complete Table 7.1 to show the number of peaks observed in the proton (¹H) NMR spectrum and in the carbon-13 NMR spectrum for each compound listed.

Table 7.1

ketone	number of peaks observed in the proton (¹ H) NMR spectrum	number of peaks observed in the carbon-13 NMR spectrum
pentan-2-one		
pentan-3-one		
3-methylbutanone		

[2]

(ii) State **all** the ketones with molecular formula C₅H₁₀O that have:

a doublet in their proton (¹H) NMR spectrum

.....

a singlet in their proton (¹H) NMR spectrum.

.....

[2]

(c) Cortisone, $C_{21}H_{28}O_5$, is a naturally occurring chemical that contains chiral carbon atoms.

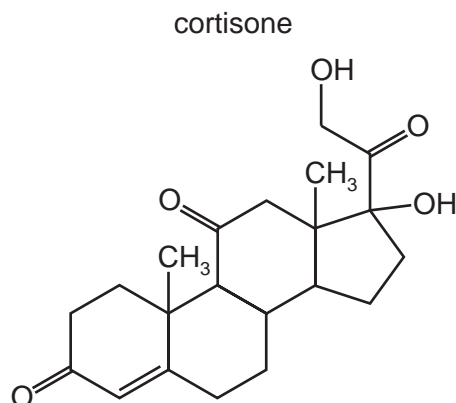


Fig. 7.1

(i) Deduce the number of chiral carbon atoms in one molecule of cortisone.

..... [1]

(ii) Cortisone is reacted with an excess of $NaBH_4$.

State the molecular formula of the organic compound formed.

..... [1]

(iii) Cortisone is an optically active molecule.

Explain what is meant by optically active.

.....

 [1]

[Total: 8]

- 8 (a) Compare the relative acidities of ethanol, ethanoic acid, chloroethanoic acid and phenol. Explain your reasoning.

..... > > >

most acidic least acidic

.....

.....

.....

.....

.....

.....

[4]

- (b) An excess of ethanedioic acid, HOOC₂COOH(aq), is reacted with warm acidified KMnO₄(aq).

State the type of reaction undergone by ethanedioic acid.

Describe what you would observe.

Write an equation for this reaction.

Your equation can use [O] or [H] as necessary.

type of reaction

observations

equation

[2]

(c) A section of a polyester is shown.

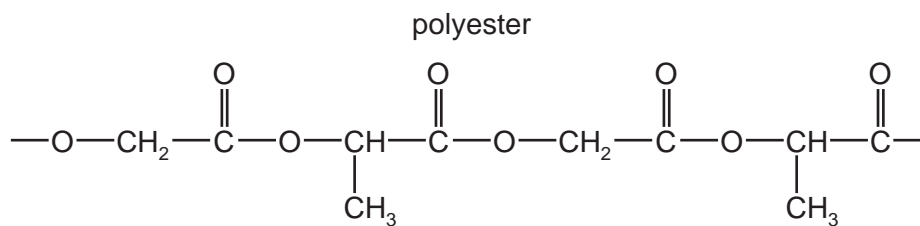


Fig. 8.1

Draw the structures of the two monomers that form this polyester.

[2]

(d) Serine can polymerise to form two different types of condensation polymer; a polyester and a polypeptide.

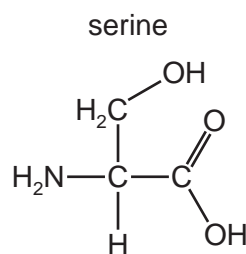


Fig. 8.2

Draw the structure of the polypeptide showing **two** repeat units. The peptide linkage should be shown displayed.

[2]

(e) Explain why condensation polymers normally biodegrade more readily than addition polymers.

.....

..... [1]

[Total: 11]

18

- 9 The structure of cyclohexylamine is shown in Fig. 9.1.

cyclohexylamine

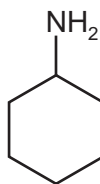


Fig. 9.1

- (a) Compare the relative basicities of ammonia, cyclohexylamine and phenylamine. Explain your reasoning.

..... > >

most basic least basic

.....

.....

.....

.....

.....

[3]

(b) Cyclohexylamine reacts with ethanoyl chloride to form the corresponding amide, **L**.

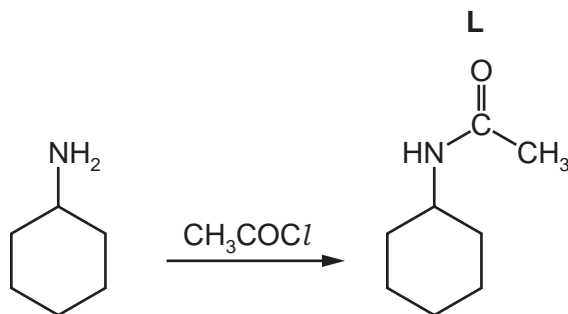


Fig. 9.2

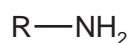
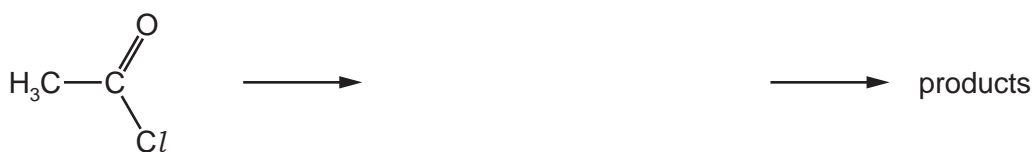
(i) Name the mechanism for the reaction shown in Fig. 9.2.

..... [1]

(ii) Complete the mechanism of the reaction between cyclohexylamine and CH_3COCl .

R-NH_2 is used to represent cyclohexylamine.

Include all relevant lone pairs of electrons, curly arrows, charges and partial charges.



[4]

(iii) The reaction between cyclohexylamine and an excess of CH_3COCl forms compound **M**. Compound **M** has the molecular formula $\text{C}_{10}\text{H}_{17}\text{NO}_2$.

Suggest and draw the structure of **M**.

[1]

[Total: 9]

Important values, constants and standards

molar gas constant	$R = 8.31 \text{ J K}^{-1} \text{ mol}^{-1}$
Faraday constant	$F = 9.65 \times 10^4 \text{ C mol}^{-1}$
Avogadro constant	$L = 6.022 \times 10^{23} \text{ mol}^{-1}$
electronic charge	$e = -1.60 \times 10^{-19} \text{ C}$
molar volume of gas	$V_m = 22.4 \text{ dm}^3 \text{ mol}^{-1}$ at s.t.p. (101 kPa and 273 K) $V_m = 24.0 \text{ dm}^3 \text{ mol}^{-1}$ at room conditions
ionic product of water	$K_w = 1.00 \times 10^{-14} \text{ mol}^2 \text{ dm}^{-6}$ (at 298 K (25 °C))
specific heat capacity of water	$c = 4.18 \text{ kJ kg}^{-1} \text{ K}^{-1}$ (4.18 $\text{J g}^{-1} \text{ K}^{-1}$)

The Periodic Table of Elements

		Group															
1	2											13	14	15	16	17	18
		Key															
		atomic number															
		atomic symbol															
		name															
		relative atomic mass															
		1															
		H hydrogen 1.0															
		2															
		3															
		4															
		5															
		6															
		7															
		8															
		9															
		10															
		11															
		12															
		13															
		14															
		15															
		16															
		17															
		18															
		19															
		20															
		21															
		22															
		23															
		24															
		25															
		26															
		27															
		28															
		29															
		30															
		31															
		32															
		33															
		34															
		35															
		36															
		37															
		38															
		39															
		40															
		41															
		42															
		43															
		44															
		45															
		46															
		47															
		48															
		49															
		50															
		51															
		52															
		53															
		54															
		55															
		56															
		57-71															
		57															
		58															
		59															
		60															
		61															
		62															
		63															
		64															
		65															
		66															
		67															
		68															
		69															
		70															
		71															
		72															
		73															
		74															
		75															
		76															
		77															
		78															
		79															
		80															
		81															
		82															
		83															
		84															
		85															
		86															
		87															
		88															
		89-103															
		89															
		90															
		91															
		92															
		93															
		94															
		95															
		96															
		97															
		98															
		99															
		100															
		101															
		102															
		103															
		104															
		105															
		106															
		107															
		108															
		109															
		110															
		111															
		112															
		113															
		114															
		115															
		116															
		117															
		118															
		119															
		120															
		121															
		122															
		123															
		124															
		125															
		126															
		127															
		128															
		129															
		130															
		131															
		132															
		133															
		134															
		135															
		136															
		137															
		138															
		139															
		140															
		141															
		142															
		143															
		144															
		145															
		146															
		147															
		148															
		149															
		150															
		151															
		152															
		153															
		154															
		155															
		156															
		157															
		158															
		159															
		160															
		161															
		162															
		163															
		164															
		165															
		166															
		167															
		168															
		169															
		170															
		171															
		172															
		173															
		174															
		175															
		176															
		177															
		178															
		179															
		180															
		181															
		182															
		183															
		184															
		185															
		186															
		187															
		188															
		189															
		190															
		191															
		192															
		193															
		194															
		195															
		196															
		197															
		198															
		199															
		200															
		201															
		202															
		203															
		204															
		205															
		206															
		207															
		208															
		209															
		210															
		211															
		212															
		213															
		214															
		215															
		216															
		217															
		218															
		219															
		220															
		221															
		222															
		223															
		224															
		225															
		226															
		227															
		228															
		229															
		230															
		231															
		232															
		233															
		234															
		235															
		236															
		237															
		238															
		239															
		240															
		241															
		242															
		243															
		244															
		245															
		246															
		247															
		248															
		249															
		250															
		251															
		252															
		253															
		254															
		255															
		256															
		257															
		258															
		259															
		260															
		261															
		262															
		263															
		264															
		265															
		266															
		267															
		268															
		269															
		270															
		271															
		272															
		273															
		274															
		275															
		276															
		277															
		278															
		279															
		280															
		281															
		282															
		283															
		284															
		285															
		286															
		287															
		288															
		289															
		290															
		291															
		292															
		293															
		294															
		295															
		296															
		297															
		298															
		299															
		300															
		301															
		302															
		303															
		304															
		305															
		306															
		307															
		308															
		309															
		310															
		311															
		312															
		313															
		314															
		315															
		316															
		317															
		318															
		319															
		320															
		321															
		322															