



Cambridge International AS & A Level

CHEMISTRY**9701/12**

Paper 1 Multiple Choice

February/March 2022**1 hour 15 minutes**

You must answer on the multiple choice answer sheet.

You will need: Multiple choice answer sheet
Soft clean eraser
Soft pencil (type B or HB is recommended)

INSTRUCTIONS

- There are **forty** questions on this paper. Answer **all** questions.
- For each question there are four possible answers **A, B, C** and **D**. Choose the **one** you consider correct and record your choice in soft pencil on the multiple choice answer sheet.
- Follow the instructions on the multiple choice answer sheet.
- Write in soft pencil.
- Write your name, centre number and candidate number on the multiple choice answer sheet in the spaces provided unless this has been done for you.
- Do **not** use correction fluid.
- Do **not** write on any bar codes.
- You may use a calculator.

INFORMATION

- The total mark for this paper is 40.
- Each correct answer will score one mark.
- Any rough working should be done on this question paper.
- The Periodic Table is printed in the question paper.
- Important values, constants and standards are printed in the question paper.

This document has **20** pages. Any blank pages are indicated.



2

- 1 The first ionisation energy of potassium, K, is 418 kJ mol^{-1} . The first ionisation energy of strontium, Sr, is 548 kJ mol^{-1} .

Which statement helps to explain why Sr has a greater first ionisation energy than K?

- A** The charge on a Sr nucleus is greater than the charge on a K nucleus.
- B** The outer electron in a Sr atom experiences greater shielding than the outer electron in a K atom.
- C** The outer electron in a Sr atom experiences spin-pair repulsion.
- D** The outer electron in a Sr atom is further from the nucleus than the outer electron in a K atom.
- 2 What is the electronic configuration of Mg^{2+} ?
- A** $1s^2 2s^2 2p^6$
- B** $1s^2 2s^2 2p^6 3s^2$
- C** $1s^2 2s^2 2p^6 3s^2 3p^2$
- D** $1s^2 2s^2 2p^6 3s^2 3p^6 3d^2 4s^2$

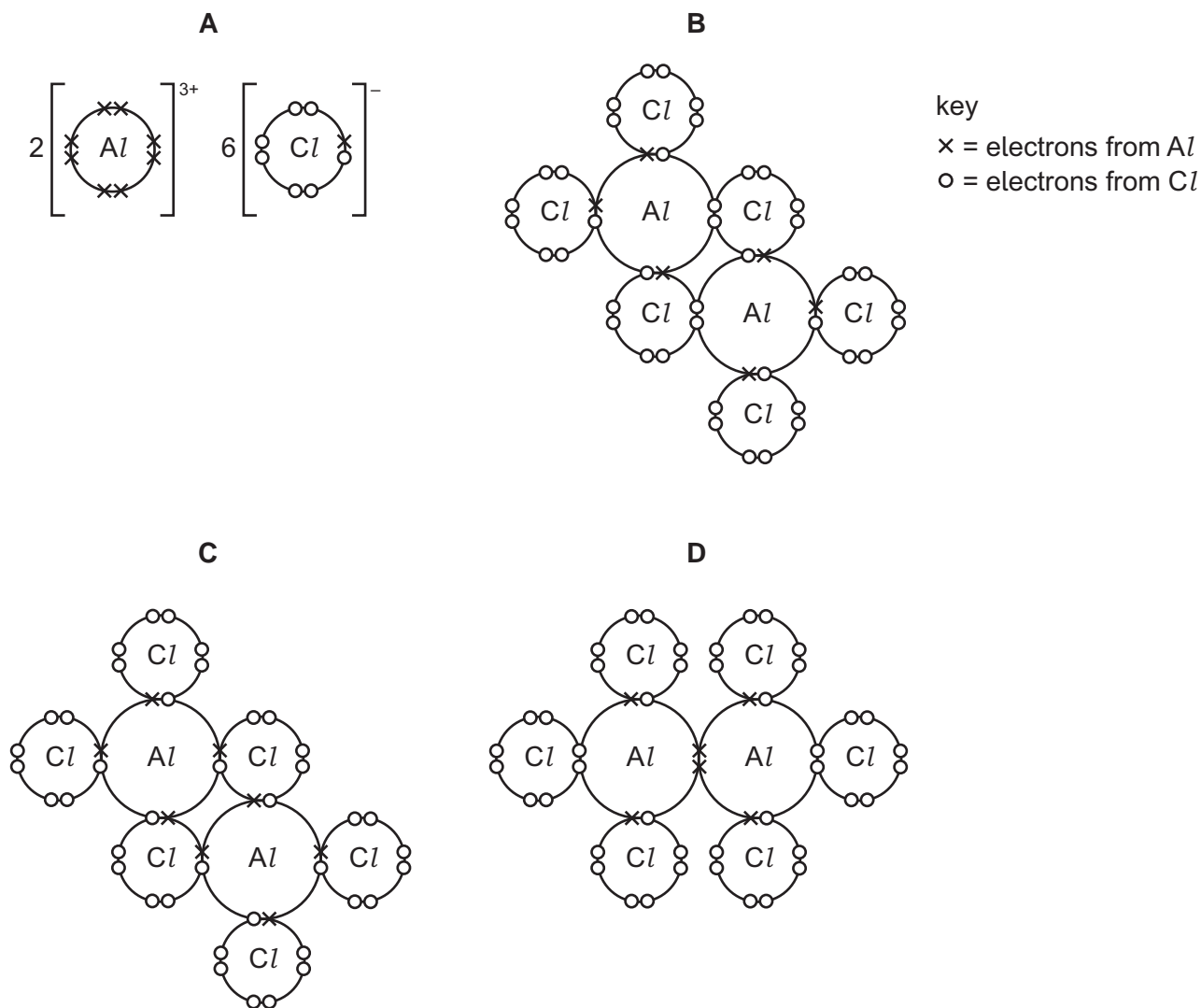
- 3 Compound X contains the elements C, H and O only.

2.00 g of X produces 4.00 g of carbon dioxide and 1.63 g of water when completely combusted.

What is the empirical formula of X?

- A** CHO_2 **B** $\text{C}_2\text{H}_2\text{O}$ **C** $\text{C}_2\text{H}_4\text{O}$ **D** CH_2O_2
- 4 For which molecule is the dipole moment zero?
- A** CH_3Cl **B** CH_2Cl_2 **C** CHCl_3 **D** CCl_4

5 Which dot-and-cross diagram is correct for Al_2Cl_6 ?



6 The boiling points of some hydrogen halides are shown.

hydrogen halide	boiling point/K
H-Cl	188
H-Br	206
H-I	238

What is the explanation for the trend in boiling point for the hydrogen halides from HCl to HI?

- A** The bond energies of the hydrogen halides increase from HCl to HI.
- B** There is an increase in the strength of the intermolecular forces of attraction from HCl to HI.
- C** The intermolecular hydrogen bonds become stronger from HCl to HI.
- D** There is an increase in the bond polarity from HCl to HI.

4

7 Elements X, Y and Z are all in the first two periods of the Periodic Table.

Their Pauling electronegativity values, E_N , are shown.

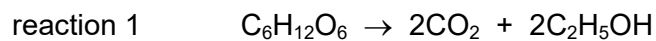
element	E_N
X	1.0
Y	2.1
Z	4.0

Substances exist with formulae XZ, YZ and Z_2 .

Which row puts these substances in order of increasing melting point?

	lowest melting point	→	highest melting point
A	XZ	YZ	Z_2
B	XZ	Z_2	YZ
C	Z_2	YZ	XZ
D	Z_2	XZ	YZ

8 The equation for reaction 1 is shown.

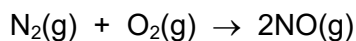


	$\Delta H_c^\ominus / \text{kJ mol}^{-1}$
$C_6H_{12}O_6$	<i>a</i>
C_2H_5OH	<i>b</i>

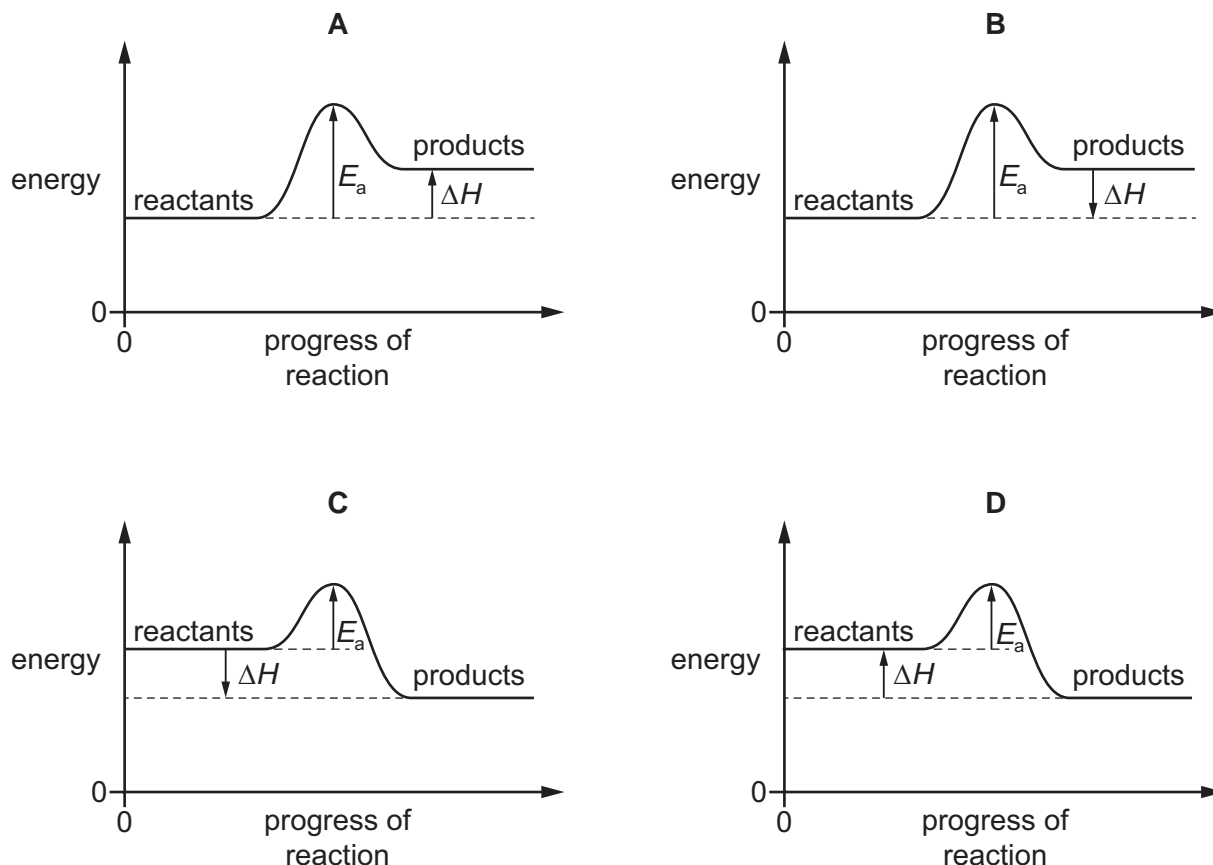
What is the correct expression for the enthalpy change of reaction 1?

- A** $a + b$ **B** $a - b$ **C** $a + 2b$ **D** $a - 2b$

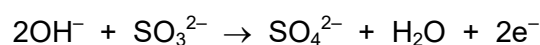
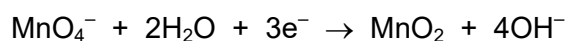
- 9 Nitrogen monoxide is an atmospheric pollutant that is formed inside car engines by an endothermic reaction between nitrogen and oxygen.



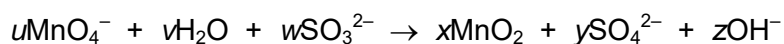
Which diagram correctly represents the energy profile for this reaction?



- 10 Two half-equations are shown.



The equation for the reaction between manganate(VII) ions and sulfite ions is shown.



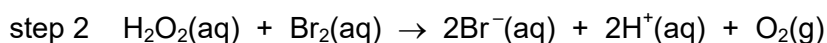
Which statements are correct?

- 1 $u = x = z$
- 2 Manganese is reduced to oxidation state +4.
- 3 Sulfur is oxidised from oxidation state +4 to +6.

- A** 1, 2 and 3 **B** 1 and 2 only **C** 1 and 3 only **D** 2 and 3 only

11 Hydrogen peroxide, H_2O_2 , decomposes to form water and oxygen.

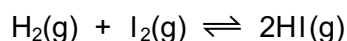
The reaction is catalysed by bromide ions.



Which row is correct?

	type of catalyst	in step 1
A	heterogeneous	bromide ions are oxidised
B	heterogeneous	bromide ions are reduced
C	homogeneous	bromide ions are oxidised
D	homogeneous	bromide ions are reduced

12 Hydrogen and iodine react to form hydrogen iodide in an exothermic reaction. The equation is shown.

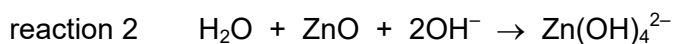
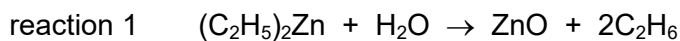


A 1 m^3 reaction vessel contains H_2 , I_2 and HI gases at equilibrium. The temperature is changed such that the total pressure in the 1 m^3 vessel doubles.

What is the effect on the value of K_p and on the position of equilibrium?

	effect on the value of K_p	effect on the position of equilibrium
A	decreases	moves left
B	increases	moves right
C	no change	moves left
D	no change	no change

13 Diethylzinc, $(\text{C}_2\text{H}_5)_2\text{Zn}$, is added to $\text{NaOH}(\text{aq})$. Two reactions occur.



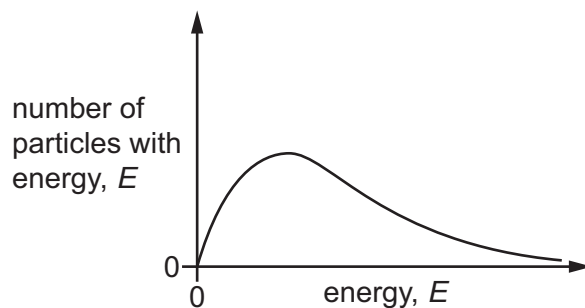
In these reactions, which compounds act as Brønsted–Lowry acids?

	reaction 1	reaction 2
A	$(\text{C}_2\text{H}_5)_2\text{Zn}$	H_2O
B	H_2O	H_2O
C	H_2O	ZnO
D	the reaction is not acid/base	ZnO

14 Which statement about atoms and molecules is correct?

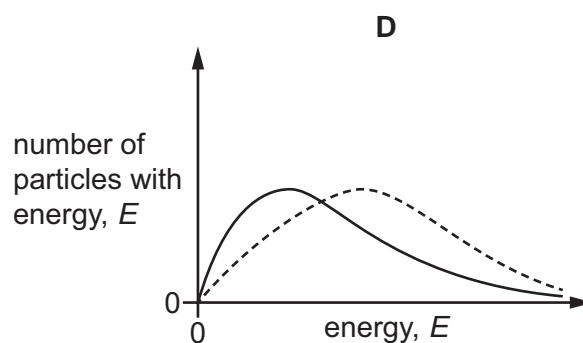
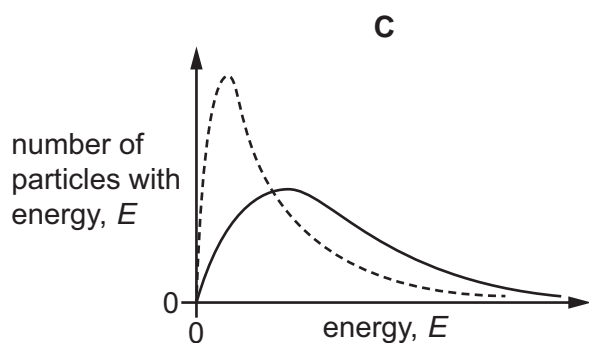
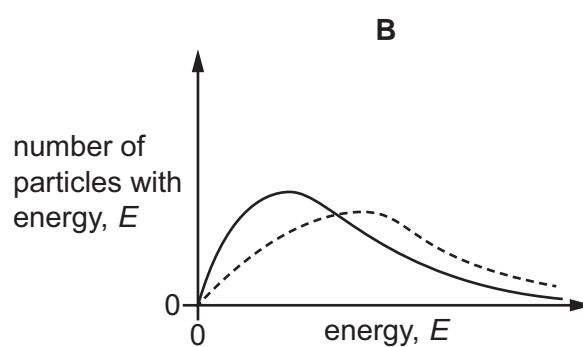
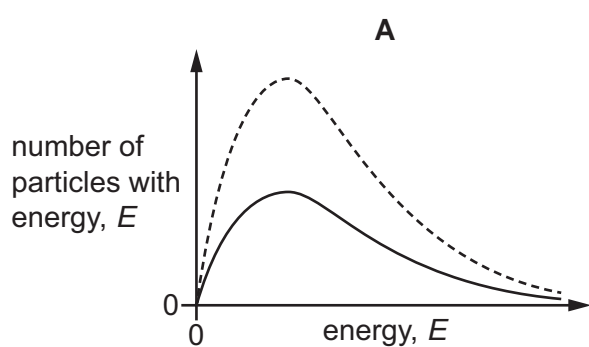
- A** The molecular formula of a compound is the simplest whole number ratio of atoms of each element in the compound.
- B** One mole of any substance contains 6×10^{23} atoms.
- C** The relative atomic mass of an element is the ratio of the average mass of one atom of the element to the mass of an atom of carbon-12.
- D** The relative formula mass of a compound is the sum of the individual atomic masses of all the atoms in the formula.

15 The Boltzmann distribution for one mole of a gas at temperature T is shown.

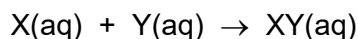


One mole of the same gas is added, and the gas remains at temperature T .

Which dotted curve shows the distribution with the added gas?



- 16 In the reaction shown, the concentrations of both X and Y are reduced to half of their original values whilst keeping the total volume of the solution constant.



Simultaneously the temperature is increased from 298 K to 348 K.

Which prediction is definitely true?

- A** A smaller proportion of collisions between particles of X and particles of Y will be successful.
- B** The average kinetic energy of particles of X and particles of Y will increase.
- C** The rate of the reaction will be unaffected.
- D** The frequency of collisions between particles of X and particles of Y will halve.
- 17 A student investigated the chloride of a Period 3 element. This is what the student wrote down as a record.

The compound was a white crystalline solid. It dissolved easily in water to give a solution of pH 12. When placed in a test-tube and heated in a roaring Bunsen flame, the compound melted after several minutes heating.

What can be deduced from this record?

- A** At least one of the recorded observations is incorrect.
- B** The compound was magnesium chloride, $MgCl_2$.
- C** The compound was phosphorus pentachloride, PCl_5 .
- D** The compound was sodium chloride, $NaCl$.
- 18 The elements in Period 3 and their compounds show trends across the period from sodium to chlorine.

Which row is correct?

	electronegativity of the elements	acid/base behaviour of the oxides of the elements
A	decreases	basic → amphoteric → acidic
B	decreases	acidic → amphoteric → basic
C	increases	basic → amphoteric → acidic
D	increases	acidic → amphoteric → basic

- 19 The table shows the melting points of SiO_2 and P_4O_6 .

oxide	SiO_2	P_4O_6
melting point/K	1883	297

Which statement explains the difference between the melting points of SiO_2 and P_4O_6 ?

- A** The bonding of the oxides changes from ionic to covalent.
B The metallic character of the elements decreases across Period 3.
C The oxidation number of the element increases from Si to P.
D The structure changes from giant molecular to simple molecular.
- 20 Equal masses of CaCO_3 , $\text{Ca}(\text{NO}_3)_2$, BaCO_3 and $\text{Ba}(\text{NO}_3)_2$ are thermally decomposed. The volume of gas produced in each experiment is measured under the same conditions.

Which compound will produce the greatest volume of gas?

- A** CaCO_3 **B** $\text{Ca}(\text{NO}_3)_2$ **C** BaCO_3 **D** $\text{Ba}(\text{NO}_3)_2$
- 21 Which row gives correct comparisons between the solubilities of calcium hydroxide and barium hydroxide and the thermal stabilities of calcium carbonate and barium carbonate?

	solubility		thermal stability	
	calcium hydroxide	barium hydroxide	calcium carbonate	barium carbonate
A	higher	lower	higher	lower
B	higher	lower	lower	higher
C	lower	higher	higher	lower
D	lower	higher	lower	higher

- 22 Which statement relating to the elements in Group 17 and their compounds is correct?
- A** Bromine will reduce KI to form iodine.
B Iodide ions react to form a white precipitate when added to silver nitrate solution.
C Bromide ions react to form a white precipitate when added to silver nitrate solution.
D Chlorine reacts with hydrogen to form a colourless gas.
- 23 An excess of chlorine was bubbled into 100 cm^3 of hot 6.0 mol dm^{-3} sodium hydroxide.
- How many moles of sodium chloride would be produced in the reaction?
- A** 0.30 **B** 0.50 **C** 0.60 **D** 0.72

24 The product of the Contact process is Z.

Which reaction or process leads to the formation of a gas that can neutralise an aqueous solution of Z?

- A atmospheric lightning
- B combustion of fuel in an internal combustion engine
- C the Haber process
- D thermal decomposition of Group 2 nitrates

25 When ammonia, NH_3 , is dissolved in water, a small concentration of ammonium ions, NH_4^+ , is formed.

Which row is correct?

	number of electrons in one ammonium ion	change of the H–N–H angle from ammonia to the ammonium ion
A	8	decreases
B	8	increases
C	10	decreases
D	10	increases

26 In this question, alkenes and cyclic alkanes should be considered.

How many **structural** isomers of C_4H_8 are there?

- A 3 B 4 C 5 D 6

27 Which compound will decolourise $\text{Br}_2(\text{aq})$?

- A $\text{CH}_3\text{CH}_2\text{CH}_2\text{CH}_2\text{CH}_2\text{CO}_2\text{H}$
- B $\text{CH}_3\text{CH}_2\text{CH}_2\text{CH}_2\text{CH}_2\text{CHO}$
- C $\text{CH}_3\text{CHCHCH}_2\text{CH}_2\text{CH}_2\text{OH}$
- D $\text{CH}_3\text{CH}_2\text{CH}_2\text{CO}_2\text{CH}_2\text{CH}_3$

- 28 Alkenes react with aqueous hydrogen bromide. The reaction proceeds via an intermediate carbocation. The more stable the intermediate, the faster the reaction.

Which sequence correctly shows an **increase** in the speed of reaction of the alkenes with hydrogen bromide?

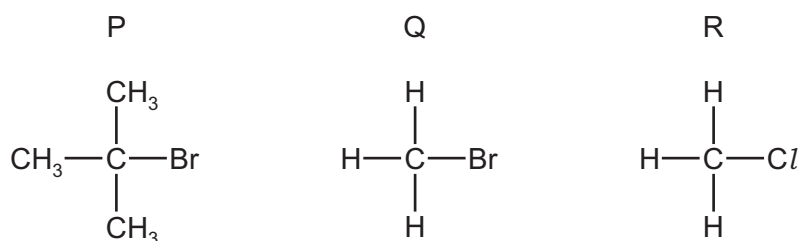
- A** ethene, propene, 2-methylpropene
B 2-methylpropene, ethene, propene
C propene, ethene, 2-methylpropene
D propene, 2-methylpropene, ethene

- 29 A reaction occurs when a sample of 1-chloropropane is heated under reflux with sodium hydroxide dissolved in ethanol.

Which row is correct?

	type of reaction	name of product
A	elimination	propan-1-ol
B	elimination	propene
C	substitution	propan-1-ol
D	substitution	propene

- 30 The diagram shows the structures of three halogenoalkanes.



P, Q and R can all be hydrolysed.

Which row is correct?

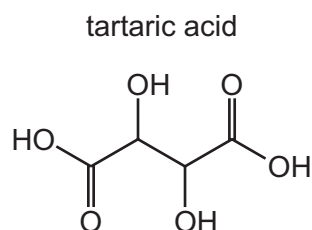
	relative speed of hydrolysis		mechanism of hydrolysis	
	Q	R	P	Q
A	fast	slow	S _N 1	S _N 2
B	fast	slow	S _N 2	S _N 1
C	slow	fast	S _N 1	S _N 2
D	slow	fast	S _N 2	S _N 1

- 31 A sample of 2.30 g of ethanol is mixed with an excess of aqueous acidified potassium dichromate(VI). The reaction mixture is boiled under reflux for one hour. The required organic product is then collected by distillation. The yield of product is 60.0%.

Which mass of product is collected?

- A 1.32 g B 1.38 g C 1.80 g D 3.00 g

- 32 The structure of tartaric acid is shown.

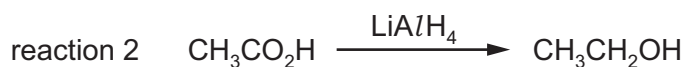
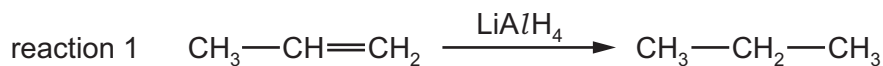


Four moles of substance X react with one mole of tartaric acid.

What could be substance X?

- A sodium
B sodium carbonate
C sodium hydrogencarbonate
D sodium hydroxide
- 33 Which compound gives both:
- an orange precipitate with 2,4-DNPH reagent
 - **and** a yellow precipitate with alkaline $I_2(aq)$?
- A ethanol
B methanal
C propanal
D propanone

34 A student suggests two uses of LiAlH_4 .



Which reactions would give the product shown?

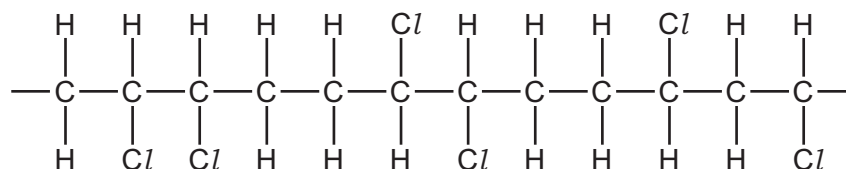
- A both reactions
 - B reaction 1 only
 - C reaction 2 only
 - D neither reaction
- 35 Compound X contains a single ester group.

X contains 27.6% by mass of oxygen.

Which pair of products could be produced by the hydrolysis of X?

- A butan-1-ol and ethanoic acid
 - B ethanol and propanoic acid
 - C methanol and methanoic acid
 - D propan-2-ol and butanoic acid
- 36 What is the least number of carbon atoms in a non-cyclic alkane molecule that has a chiral centre?
- A 7 B 8 C 9 D 10

37 A molecule of a polymer contains the sequence shown.



Which monomer could produce this polymer by addition polymerisation?

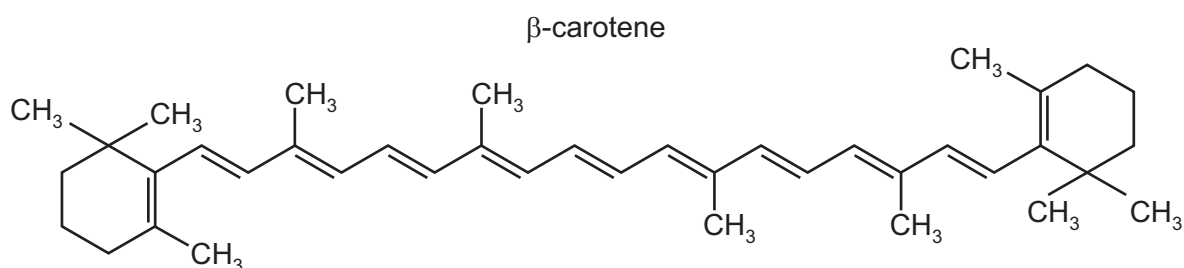
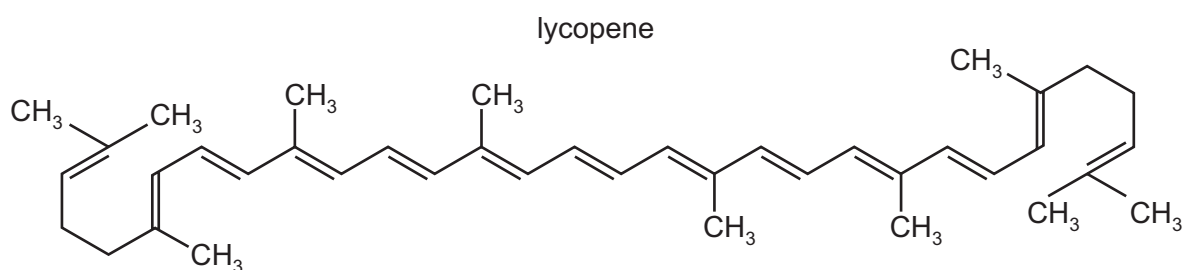
- A CHCl=CHCl
- B $\text{CH}_2=\text{CHCl}$
- C $\text{CH}_3\text{CCl=CHCl}$
- D $\text{CH}_3\text{CCl=CH}_2$

- 38 Compound Y is heated with a mild oxidising agent. One of the products of the reaction reacts with hydrogen cyanide forming 2-hydroxybutanenitrile.

What is compound Y?

- A butan-1-ol
- B butan-2-ol
- C propan-1-ol
- D propan-2-ol

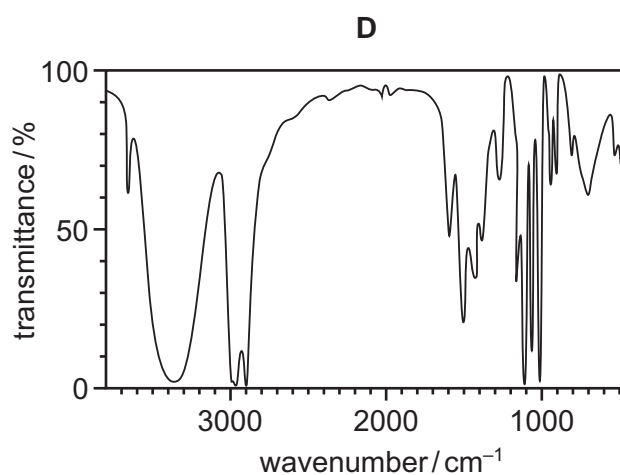
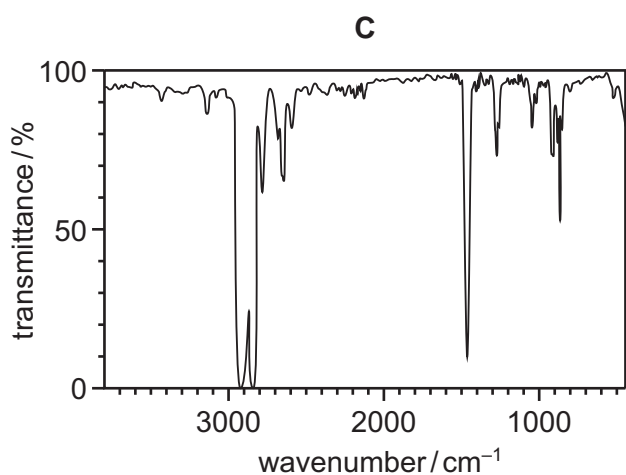
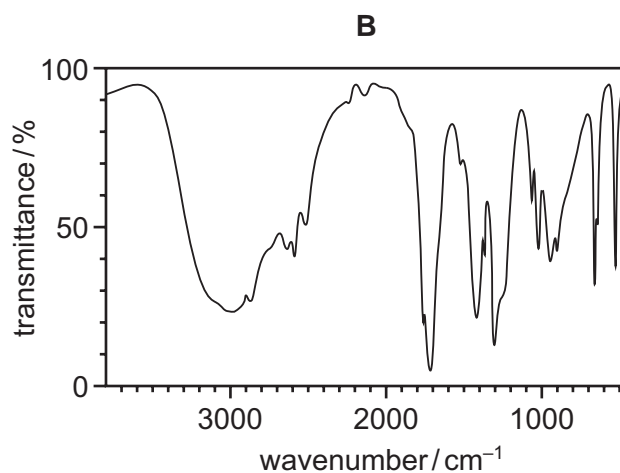
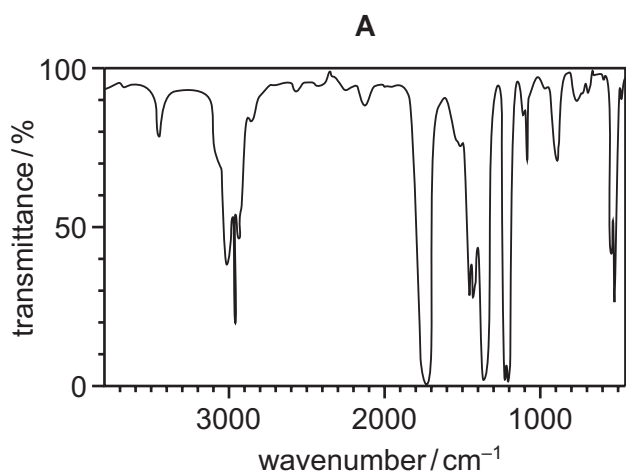
- 39 The diagrams show the structures of lycopene and β -carotene.



When lycopene is converted into β -carotene, what is the gain or loss of hydrogen atoms per molecule?

- A 4 gained
- B 2 gained
- C no change
- D 2 lost

- 40 Which diagram shows the infrared spectrum of a compound that contains both a C=O and an O–H group?



bond	functional group containing the bond	characteristic infrared absorption range (in wavenumbers) / cm ⁻¹
C–O	hydroxy, ester	1040–1300
C=C	aromatic compound, alkene	1500–1680
C=O	amide carbonyl, carboxyl ester	1640–1690 1670–1740 1710–1750
C≡N	nitrile	2200–2250
C–H	alkane	2850–3100
N–H	amine, amide	3300–3500
O–H	carboxyl hydroxy	2500–3000 3200–3650

BLANK PAGE

BLANK PAGE

Important values, constants and standards

molar gas constant	$R = 8.31 \text{ J K}^{-1} \text{ mol}^{-1}$
Faraday constant	$F = 9.65 \times 10^4 \text{ C mol}^{-1}$
Avogadro constant	$L = 6.022 \times 10^{23} \text{ mol}^{-1}$
electronic charge	$e = -1.60 \times 10^{-19} \text{ C}$
molar volume of gas	$V_m = 22.4 \text{ dm}^3 \text{ mol}^{-1}$ at s.t.p. (101 kPa and 273 K) $V_m = 24.0 \text{ dm}^3 \text{ mol}^{-1}$ at room conditions
ionic product of water	$K_w = 1.00 \times 10^{-14} \text{ mol}^2 \text{ dm}^{-6}$ (at 298 K (25 °C))
specific heat capacity of water	$c = 4.18 \text{ kJ kg}^{-1} \text{ K}^{-1}$ (4.18 $\text{J g}^{-1} \text{ K}^{-1}$)

