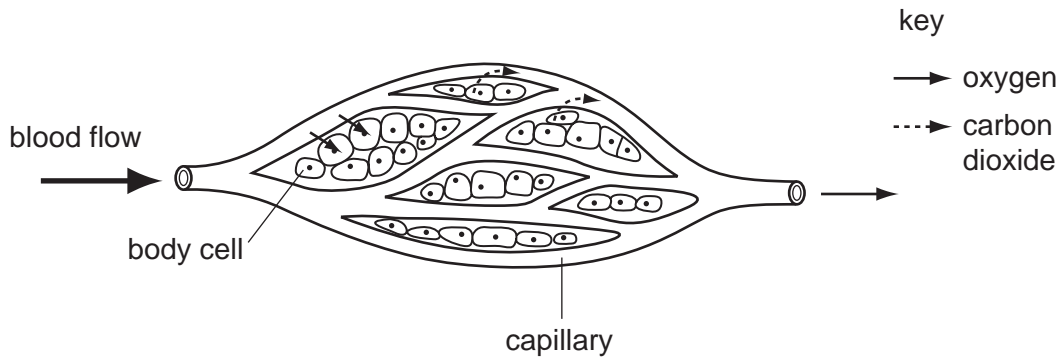
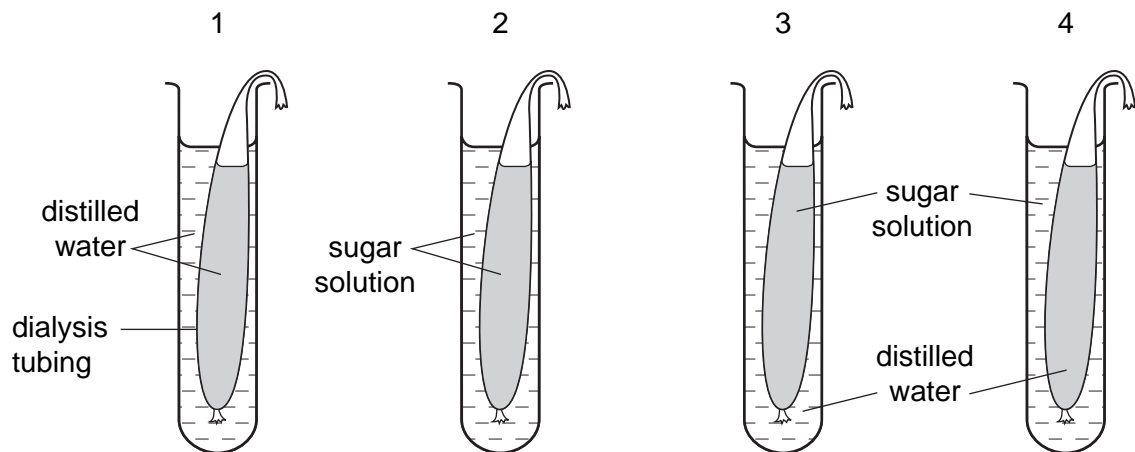


- 1 The arrows in the diagram show the movement of oxygen and carbon dioxide between body cells and the blood in capillaries.



By which process does this movement occur?

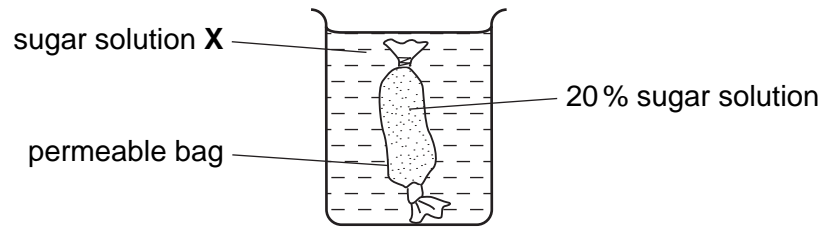
- A diffusion
 - B excretion
 - C osmosis
 - D respiration
- 2 The diagram shows the apparatus used in an experiment on osmosis.



In which tubes will osmosis take place?

- A 1 and 2
 - B 1 and 4
 - C 2 and 3
 - D 3 and 4
- 3 What is an example of osmosis?
- A Carbon dioxide goes out through the stomata of a leaf.
 - B Digested food is absorbed from the small intestine.
 - C Oxygen goes into the blood from an alveolus.
 - D Water enters a plant root from the soil.

4 The diagram shows an experiment on diffusion.



More sugar diffuses out of the bag than diffuses in.

What is the concentration of sugar in solution X?

- A** 10% **B** 20% **C** 30% **D** 40%

5 The diagrams show the arrangement of cells in a section of a green leaf.

Which arrow represents the diffusion of the most oxygen during bright sunlight?

