

Please check the examination details below before entering your candidate information

Candidate surname					Other names			
Centre Number					Candidate Number			
Pearson Edexcel International GCSE (9–1)					<input type="text"/> <input type="text"/> <input type="text"/> <input type="text"/> <input type="text"/> <input type="text"/> <input type="text"/> <input type="text"/> <input type="text"/> <input type="text"/>			
Tuesday 14 January 2020								
Afternoon (Time: 1 hour 15 minutes)					Paper Reference 4BI1/2B			
Biology Unit: 4BI1 Paper: 2B								
You must have: Calculator, ruler							Total Marks	

Instructions

- Use **black** ink or ball-point pen.
- **Fill in the boxes** at the top of this page with your name, centre number and candidate number.
- Answer **all** questions.
- Answer the questions in the spaces provided
– *there may be more space than you need.*
- Show all the steps in any calculations and state the units.
- Some questions must be answered with a cross in a box ☒. If you change your mind about an answer, put a line through the box ☒ and then mark your new answer with a cross ☒.

Information

- The total mark for this paper is 70.
- The marks for **each** question are shown in brackets
– *use this as a guide as to how much time to spend on each question.*

Advice

- Read each question carefully before you start to answer it.
- Write your answers neatly and in good English.
- Try to answer every question.
- Check your answers if you have time at the end.

Turn over ►

P59945A

©2020 Pearson Education Ltd.

1/1/1/1/



Pearson

Answer ALL questions.

- 1 Read the passage below. Use the information in the passage and your own knowledge to answer the questions that follow.

Badgers and bovine tuberculosis

The bacterium *Mycobacterium bovis* causes the lung disease bovine tuberculosis (TB) in cattle. Infected cattle have damaged lungs, which causes gas exchange problems and makes them cough into the air. The pathogen spreads to humans if they inhale air containing the bacterium. Humans also become infected if they drink unpasteurised milk from infected cattle. Milk is usually pasteurised by heating it for a period of time at a high temperature.

- 5
- Bovine TB can kill humans. In one year, 13 400 people died from a total of 149 000 reported cases of TB. Some of these cases were from Europe, where 103 people died from 1290 reported cases. The rest of the cases were from outside Europe.
- 10 Some farmers in the United Kingdom are concerned that badgers spread the TB pathogen to cattle.

The photograph shows a badger.



- Badgers act as a reservoir for the TB pathogen and can live for several years without showing any signs of TB. Some farmers want badgers to be culled (killed) to stop the spread of bovine TB to cattle.
- 15

- However, some scientists claim that only a fraction of cattle catch TB from badgers, and that culling badgers could spread the disease to new areas. This is because badger culling changes the behaviour of the badgers that survive. Normally, badgers live in social groups and will defend their territory from other badgers by being aggressive. This territorial behaviour reduces the spread of disease between groups. If badgers are culled, then their territories cannot be defended. Surviving badgers could move in to occupy the undefended territory, bringing TB with them. This could spread TB to new animals and new areas.
- 20

- Some people believe that badgers should be vaccinated to stop the spread of TB. However, there is some concern that vaccination may increase the spread of TB because it might also change badger behaviour.
- 25

An investigation is needed to find out if badger vaccination can reduce TB both in badgers and in cattle.

DO NOT WRITE IN THIS AREA

DO NOT WRITE IN THIS AREA

DO NOT WRITE IN THIS AREA



DO NOT WRITE IN THIS AREA

DO NOT WRITE IN THIS AREA

DO NOT WRITE IN THIS AREA

(a) Explain why cattle with damaged lungs have gas exchange problems (lines 2 to 3). (2)

.....

.....

.....

.....

.....

.....

(b) Explain the advantage of drinking pasteurised milk rather than unpasteurised milk (lines 4 to 5). (2)

.....

.....

.....

.....

.....

.....

(c) Suggest two reasons why there were fewer cases of bovine TB in Europe compared with outside Europe (lines 7 to 9). (2)

1.....

.....

2.....

.....



(g) Describe how scientists could find out if badger vaccination reduces TB in cattle (lines 27 to 28).

(3)

DO NOT WRITE IN THIS AREA

DO NOT WRITE IN THIS AREA

DO NOT WRITE IN THIS AREA

.....

.....

.....

.....

.....

.....

.....

.....

.....

.....

.....

(Total for Question 1 = 16 marks)



2 Transpiration is the evaporation of water from the surface of a plant.

(a) Explain why transpiration is useful for plants.

(2)

.....

.....

.....

.....

.....

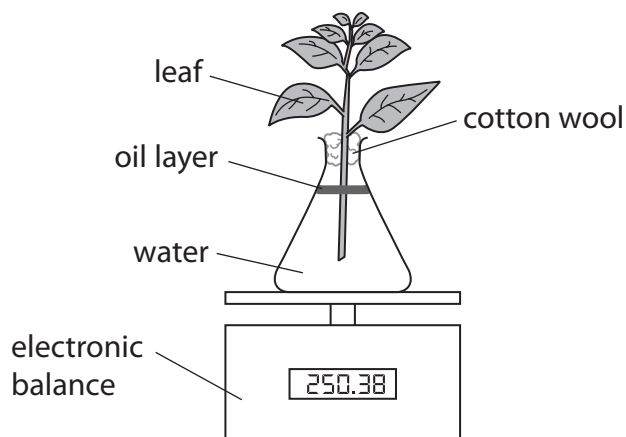
.....

DO NOT WRITE IN THIS AREA

DO NOT WRITE IN THIS AREA

DO NOT WRITE IN THIS AREA

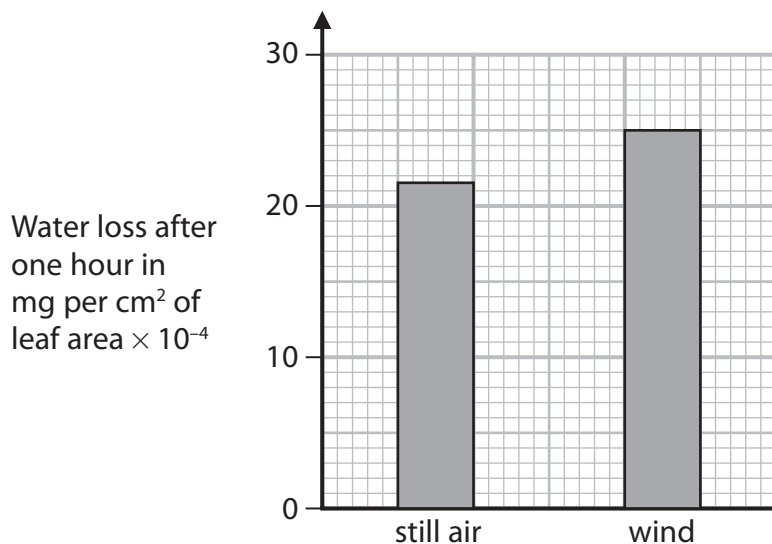
(b) A student uses this apparatus to measure the rate of transpiration in still air and the rate of transpiration in windy conditions.



The student calculates the total loss of water after one hour in mg per cm^2 of leaf area $\times 10^{-4}$ for the plant in still air.

He then repeats this calculation for the plant in windy conditions.

The graph shows the student's results.



DO NOT WRITE IN THIS AREA

DO NOT WRITE IN THIS AREA

DO NOT WRITE IN THIS AREA

(i) The total leaf surface area from which transpiration occurs is 250 cm².

Calculate the loss of water from this plant in still air in mg per hour.

(2)

loss of water = mg per hour

(ii) Explain the results shown by the graph.

(3)

.....

.....

.....

.....

.....

.....

.....

.....

.....

.....

.....

(c) Justify two factors that the student needs to control to make a valid comparison of transpiration in still air and in windy conditions.

(4)

1

.....

.....

.....

2

.....

.....

.....

(Total for Question 2 = 11 marks)



DO NOT WRITE IN THIS AREA

DO NOT WRITE IN THIS AREA

DO NOT WRITE IN THIS AREA

BLANK PAGE



3 The human heart pumps blood when its muscle tissue contracts.

Diagram 1 shows a human heart and a cross-section through its ventricles.

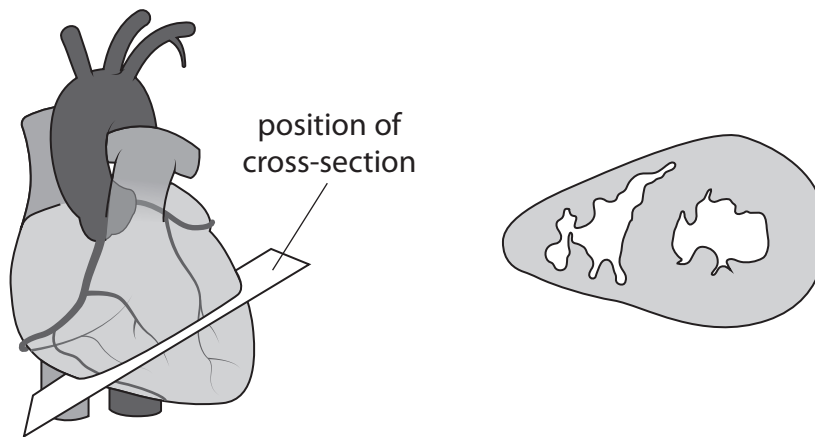


Diagram 1

(a) Which of these statements about the ventricles is correct?

- A the left ventricle wall is thick because it has to pump blood to the body
- B the left ventricle wall is thin because it has to pump blood to the lungs
- C the right ventricle wall is thin because it has to pump blood to the body
- D the right ventricle wall is thick because it has to pump blood to the lungs

(1)



(b) Ventricle muscle tissue is damaged if the blood supply is reduced.

Diagram 2 shows the damaged part of a human heart and a cross-section through its ventricles.

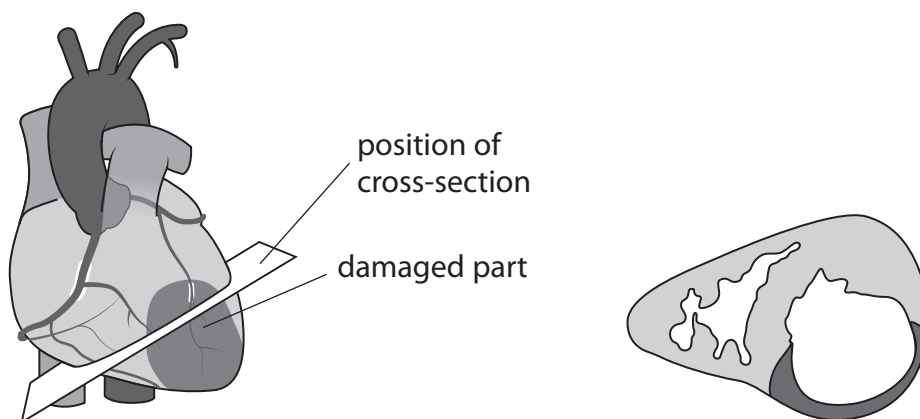


Diagram 2

Explain the cause of the change in the appearance of the muscle tissue in diagram 2.

(3)

.....

.....

.....

.....

.....

.....

.....

.....

.....

.....

DO NOT WRITE IN THIS AREA

DO NOT WRITE IN THIS AREA

DO NOT WRITE IN THIS AREA



DO NOT WRITE IN THIS AREA

DO NOT WRITE IN THIS AREA

DO NOT WRITE IN THIS AREA

(c) Scientists are investigating the use of stem cells to repair damaged hearts.

The stem cells are injected into the ventricle muscle tissue.

(i) Explain why stem cells could repair a damaged heart.

(2)

.....

.....

.....

.....

.....

.....

(ii) The stem cells are obtained from the person who has the damaged heart.

Explain why using stem cells from the same person is better than using stem cells from a different person.

(2)

.....

.....

.....

.....

.....

.....

(Total for Question 3 = 8 marks)



4 DNA and RNA are involved in the processes of transcription and translation.

(a) State three ways in which the structure of a DNA molecule differs from the structure of an RNA molecule.

(3)

1

2

3

(b) Describe the differences between the processes of transcription and translation.

(5)

.....

.....

.....

.....

.....

.....

.....

.....

.....

.....

.....

.....

.....

.....

.....

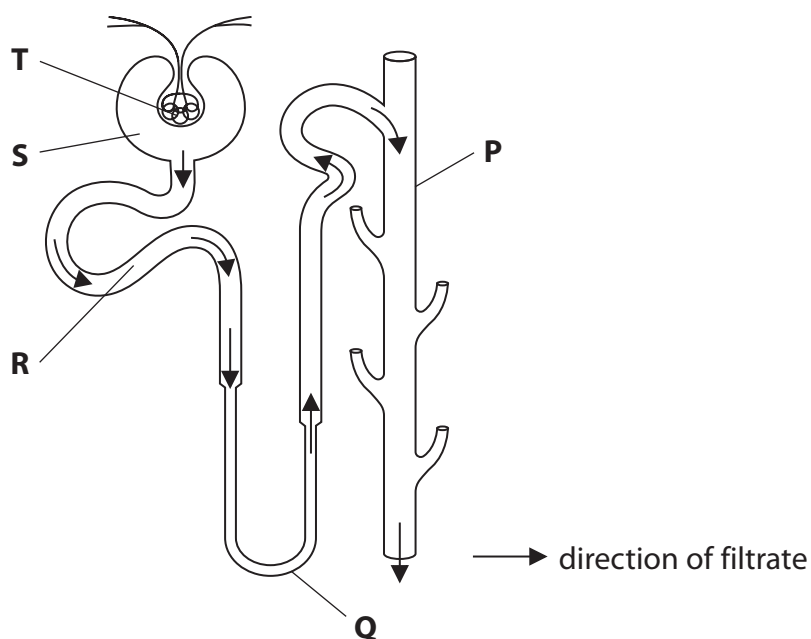
DO NOT WRITE IN THIS AREA

DO NOT WRITE IN THIS AREA

DO NOT WRITE IN THIS AREA



5 The diagram shows part of a human nephron, with parts labelled P, Q, R, S and T.



DO NOT WRITE IN THIS AREA

DO NOT WRITE IN THIS AREA

DO NOT WRITE IN THIS AREA

(a) (i) What is the name of part P?

(1)

- A** collecting duct
- B** glomerulus
- C** proximal convoluted tubule
- D** renal artery

(ii) Where does ultrafiltration occur?

(1)

- A** P
- B** Q
- C** R
- D** T



(iii) Where is permeability affected by ADH?

(1)

- A P
- B Q
- C R
- D S

(iv) Where is glucose selectively reabsorbed into the blood?

(1)

- A Q
- B R
- C S
- D T

DO NOT WRITE IN THIS AREA

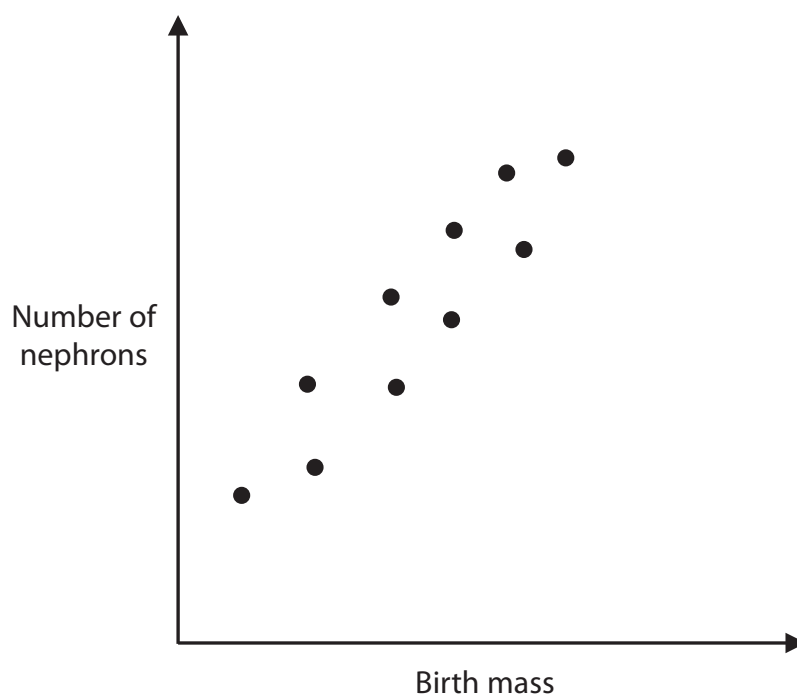
DO NOT WRITE IN THIS AREA

DO NOT WRITE IN THIS AREA



- (b) Scientists investigate the relationship between birth mass and the number of nephrons in the kidney.

The scatter diagram shows their results.



- (i) Describe the relationship shown by the scatter diagram.

(2)

.....

.....

.....

.....

.....

.....



DO NOT WRITE IN THIS AREA

DO NOT WRITE IN THIS AREA

DO NOT WRITE IN THIS AREA

(ii) Babies born with low birth mass are more likely to develop high blood pressure when they become adults.

Explain why protein in the urine of these adults may be an indication of kidney damage caused by high blood pressure.

(4)

.....

.....

.....

.....

.....

.....

.....

.....

.....

.....

.....

.....

.....

.....

.....

.....

.....

.....

.....

.....

.....

.....

.....

(iii) Describe a simple test to show that a urine sample contains protein.

(2)

.....

.....

.....

.....

.....

.....

.....

.....

.....

.....

.....

.....

.....

.....

.....

.....

.....

.....

.....

.....

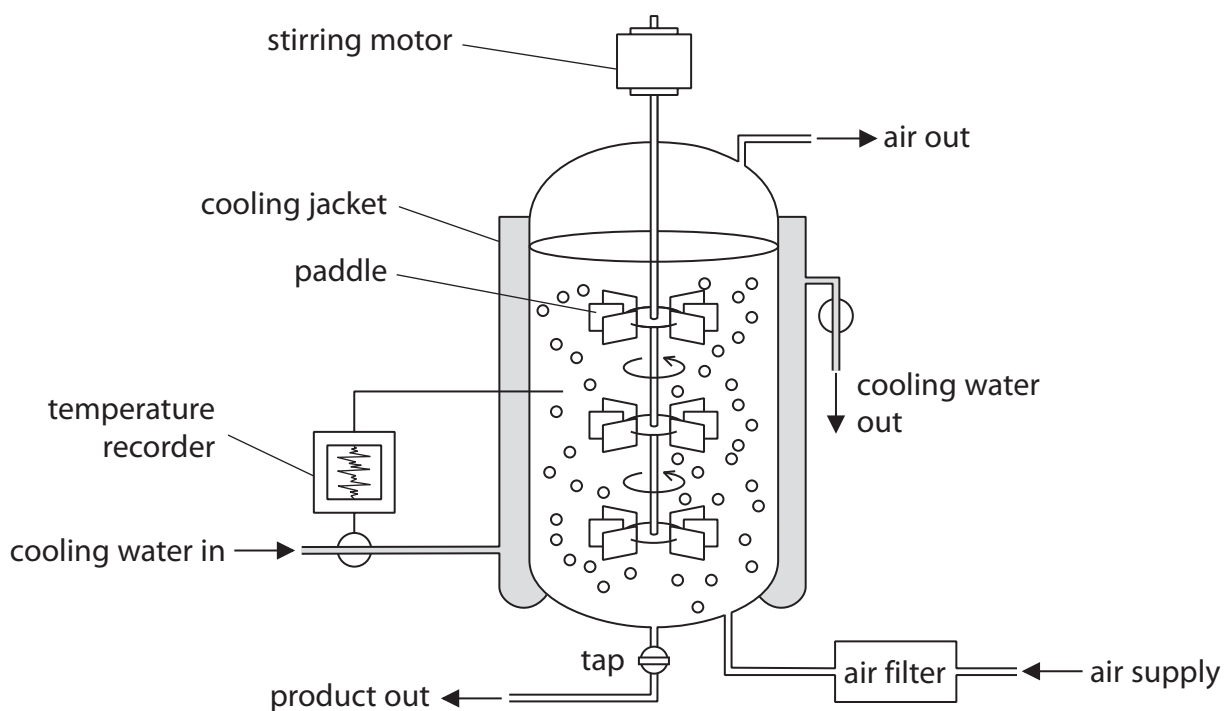
.....

.....

(Total for Question 5 = 12 marks)



6 The diagram shows a fermenter used to grow microorganisms.



DO NOT WRITE IN THIS AREA

DO NOT WRITE IN THIS AREA

DO NOT WRITE IN THIS AREA

(a) Describe the functions of the paddles in the fermenter. (2)

.....

.....

.....

.....

(b) Explain why the fermenter has a filtered air supply. (2)

.....

.....

.....

.....



DO NOT WRITE IN THIS AREA

DO NOT WRITE IN THIS AREA

DO NOT WRITE IN THIS AREA

(c) Explain why the temperature recorder is connected to the liquid in the fermenter and the water input of the cooling jacket.

(2)

.....

.....

.....

.....

.....

.....

.....

(Total for Question 6 = 6 marks)



- 7 Some mice have yellow hair and some mice have brown hair.

The gene for hair colour in mice has two alleles. The dominant allele is H and the recessive allele is h.

A scientist crosses a yellow-haired male mouse with a yellow-haired female mouse.

He predicts a 3:1 ratio of yellow to brown mice in the offspring.

- (a) Give the genotype of the yellow parent mice that would produce this 3:1 ratio. (1)

- (b) The scientist then crosses three other pairs of male and female yellow mice.

The table shows his results.

	Number of offspring	
	yellow	brown
Cross one	7	3
Cross two	8	4
Cross three	6	3

- Calculate the ratio of the total number of yellow to brown mice for these crosses. (1)

ratio =

DO NOT WRITE IN THIS AREA

DO NOT WRITE IN THIS AREA

DO NOT WRITE IN THIS AREA



(c) Suggest reasons why the predicted ratio of 3:1 is not obtained.

(4)

DO NOT WRITE IN THIS AREA

DO NOT WRITE IN THIS AREA

DO NOT WRITE IN THIS AREA

Area with horizontal dotted lines for writing the answer to question (c).

(Total for Question 7 = 6 marks)

TOTAL FOR PAPER = 70 MARKS



DO NOT WRITE IN THIS AREA

DO NOT WRITE IN THIS AREA

DO NOT WRITE IN THIS AREA

BLANK PAGE



DO NOT WRITE IN THIS AREA

DO NOT WRITE IN THIS AREA

DO NOT WRITE IN THIS AREA

BLANK PAGE



DO NOT WRITE IN THIS AREA

DO NOT WRITE IN THIS AREA

DO NOT WRITE IN THIS AREA

BLANK PAGE

